

STARBUCKS HOT ROLLED STEEL FINISH IN STOCK

Call API Today! 813.925.0144



Hot Rolled Steel



Approved API Spec for MT1011 is 0184 PC

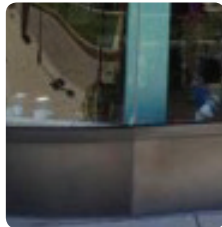


In-House Fabrication

Starbucks Approved MT1011 Hot Rolled Steel Provided By API

American Products Inc. (API)'s custom specification of **Hot Rolled Steel with a Matte Powder Coat (0184 PC) for Starbucks** is comprised of hot rolled 16 gauge steel. The steel is prepped and sealed with a topcoat which provides additional durability to the elements and resiliency to rust. However, the finished product maintains it's intended rugged and weathered look. API's approved Starbucks hot rolled steel finish comes in a custom matte finish. This finish can be used on various applications, such as **storefront portals, doors, panel systems, fixtures** and more.

Hot Rolled Steel Finish Variations



API, a storefront and architectural metals supplier, is an approved vendor for Starbucks. When working with API, general contractors and subcontractors can rely on top-notch customer service, short lead times, and a one-stop shop for all their storefront and architectural metal needs.

Let API assist you with your next Starbucks location. For more information about this custom finish or our complete storefront and architectural metals product line (framed and frameless doors, ACM, brake metal, canopies, etc.), please **send a request to info@americanprod.com or call Forrest Tatlock at 813.925.0144.**

Hot Rolled Steel

Is a "Living" Finish

What is a living finish?

A living finish is what occurs when you have any metal (except stainless steel) that is not lacquered or protected by any other process. The finish will continually evolve through exposure to the elements, climate, handling, cleaning, and waxing, also called an oxidation process.

**Contact
Forrest @
API Today!**

P: 813.925.0144
F: 813.925.1414

info@americanprod.com
www.americanprod.com

API
AMERICAN
PRODUCTS, INC.