

CW750 RETAIL CURTAIN WALL



API's CW750 Curtain Wall system can be used for low to high-rise applications. Our system is economical and tested to meet high performance requirements, making it the perfect choice for your project.



CW750 RETAIL CURTAIN WALL

THE SMART CHOICE

API's CW750 Curtain Wall is designed, engineered, constructed, and tested to meet high performance standards. It's a versatile system that offers multiple installation options, including stick-built and unitized. In addition, it's economical and can be used for low to high-rise applications, making it the perfect choice for your project.

Choose from standard API Curtain Wall or allow us to customize a system that is project specific.

PERFORMANCE

API CW750 Curtain Wall is tested to allow zero water infiltration at 15PSF and design pressures up to +/- 50PSF (depending on frame size).

Performance Test Standards:

Air Performance	ASTM E 283
Water	ASTM E 331
Structural/Uniform Static Load	ASTM E 330
Dynamic Water	AAMA 501.1

FABRICATION AND INSTALLATION OPTIONS

- Material can be ordered in stock lengths, pre-fabricated knock-down kits, pre-assembled units, and fully pre-glazed unitized assemblies.
 - Stock lengths - Order custom extrusion lengths to optimize material usage.
 - Pre-fabricated knock-down kits - Build and glaze frames on-site for easy installation.
 - Pre-assembled units (without glass) - Glaze pre-assembled frames for increased productivity.
 - Fully pre-glazed unitized assemblies - Install single-span, non-stacking, ladder built, unitized assemblies, using a split vertical, on-site for maximum efficiency.

PRODUCT APPLICATIONS

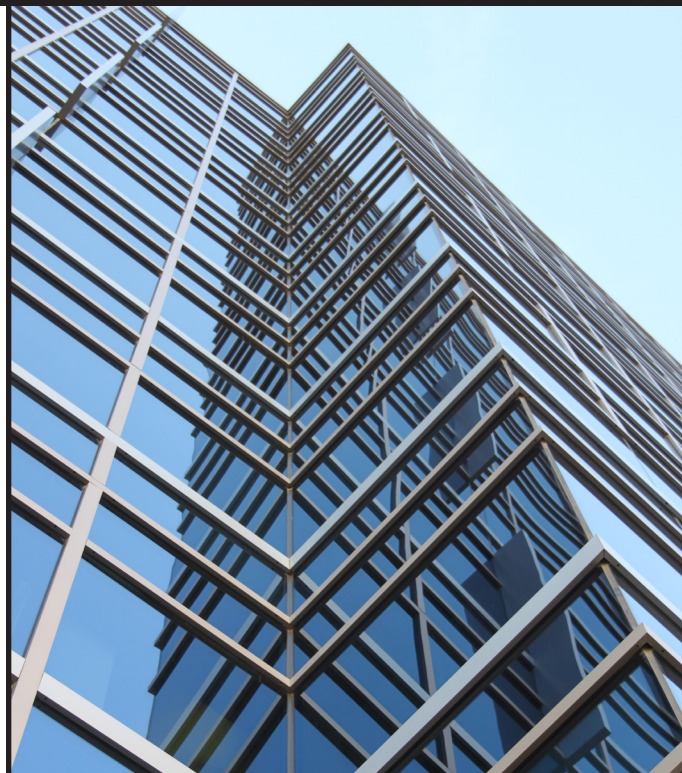
- Retail/Restaurant
- Corporate
- Healthcare
- Education
- Hospitality
- Civic/Public
- Sports/Recreation
- Low, medium, and high rise multi-span projects

CUSTOMIZATION

API offers custom design solutions to meet specific project needs.

FINISHES

Available in Standard Anodized (clear, bronze, black, etc.), Powder Coat (endless color options), 2, 3 & 4 coat Kynar (standard and custom). Stainless Steel, Brass, Oil Rubbed Bronze and custom clad finishes also available. API can match or create virtually any color.



KEY FEATURES:

- Stick-built Curtain Wall
- Can be unitized
- Thermally improved
- 2.5" x 7.5" overall dimensions
- Accommodates infill from 1/4" to 1-5/16"
- Equally Pressurized
- Florida Product Approval (FL14372)
- Multiple ways to purchase:
 - Stock lengths
 - Pre-fabricated knock-down kits
 - Pre-assembled units
 - Pre-glazed, pre-assembled unitized units

SUMMARY SPECIFICATIONS:

For a full 3-part specification or specific CAD details, please visit www.americanprod.com.

