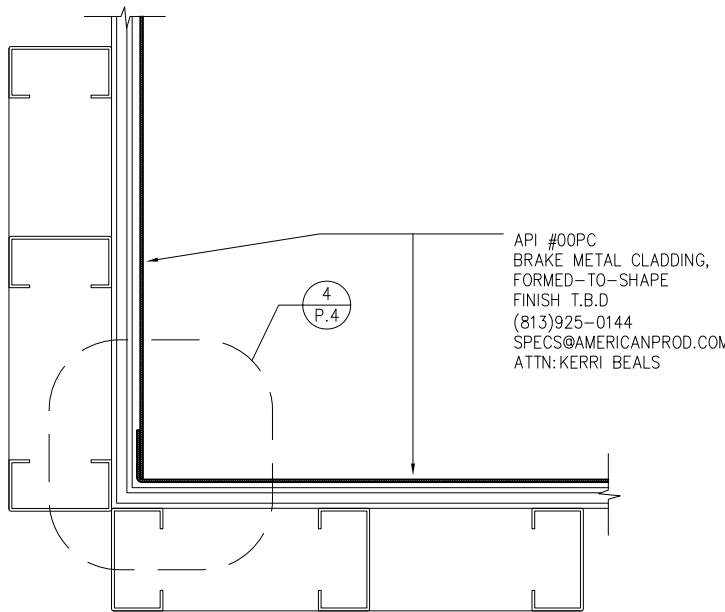


API #00PC  
BRAKE METAL CLADDING,  
FORMED-TO-SHAPE  
FINISH T.B.D  
(813)925-0144  
SPECS@AMERICANPROD.COM  
ATTN: KERRI BEALS

API #00PC  
BRAKE METAL CLADDING,  
FORMED-TO-SHAPE  
FINISH T.B.D  
(813)925-0144  
SPECS@AMERICANPROD.COM  
ATTN: KERRI BEALS

— GENERAL BRAKE METAL DETAIL  
-- SHOWING MULTIPLE CONDITIONS



API #00PC  
BRAKE METAL CLADDING,  
FORMED-TO-SHAPE  
FINISH T.B.D  
(813)925-0144  
SPECS@AMERICANPROD.COM  
ATTN: KERRI BEALS

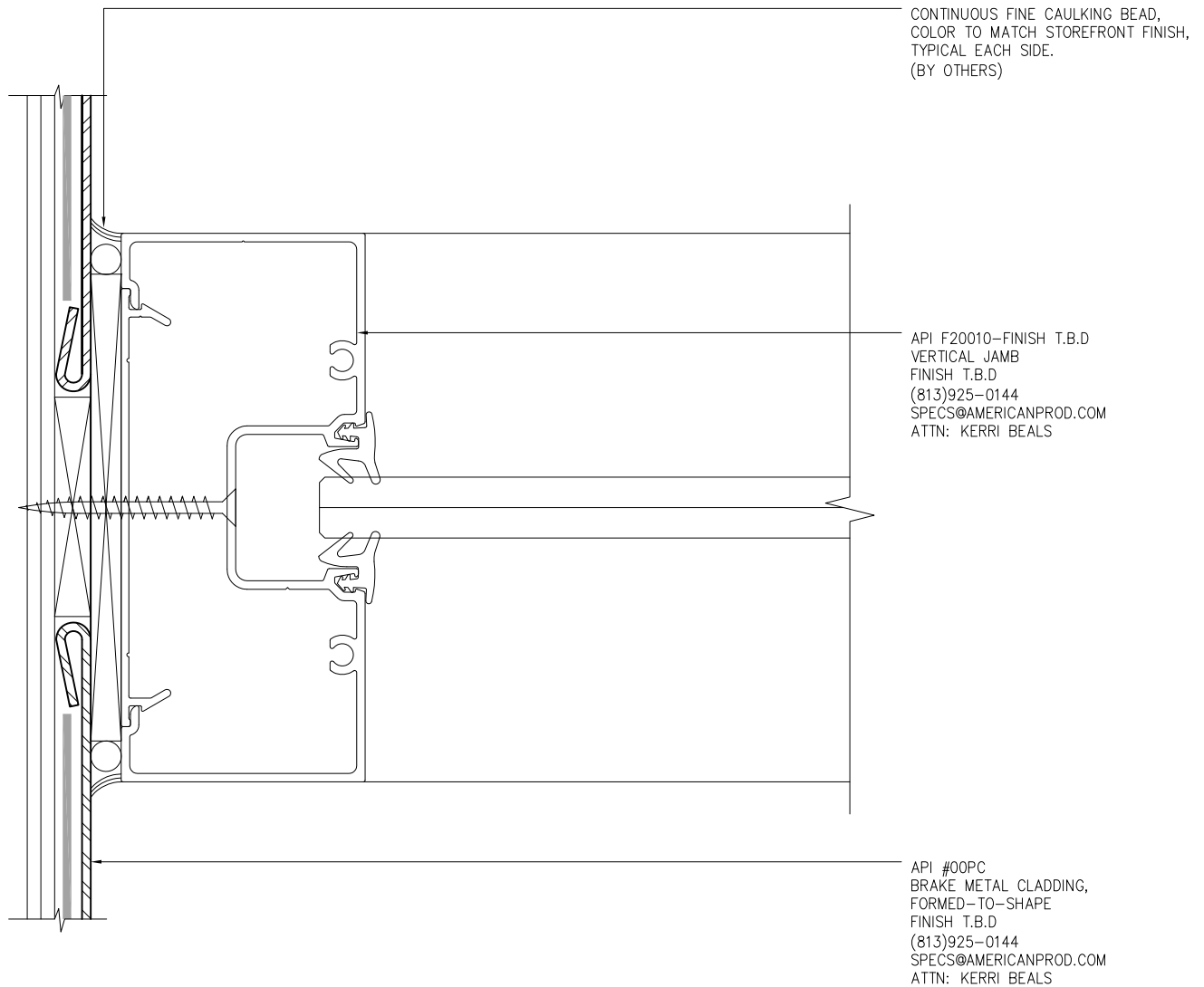
— GENERAL BRAKE METAL DETAIL  
-- SHOWING ONLY INSIDE CORNER CONDITION

API Recommends that this note appear with storefront elevations and section view details in your blueprints.  
Storefront and related materials provided by American Products, Inc. (API). No substitutions without written consent from store owner/Architect. API (813) 925-0144

Customer: API IN-HOUSE	
Assembly: BRAKE METAL DETAILS	
Drawn By: SMB	Date: 11/09/2012
Revision: SER	Date: 11/06/2013
Scale: N.T.S.	Sheet: 1 OF 6



AMERICAN PRODUCTS, INC. (API)  
12157 W. LINEBAUGH AVENUE #335  
TAMPA, FL 33626  
CONTACT: KERRI BEALS  
PH (813) 925-0144  
WWW.AMERICANPROD.COM



**1** STOREFRONT DETAIL AT JAMB  
P.1

API Recommends that this note appear with storefront elevations and section view details in your blueprints.

Storefront and related materials provided by American Products, Inc. (API). No substitutions without written consent from store owner/Architect. API (813) 925-0144

Customer: API IN-HOUSE

Assembly: BRAKE METAL DETAILS

Drawn By: SMB

Date: 11/09/2012

Revision: SER

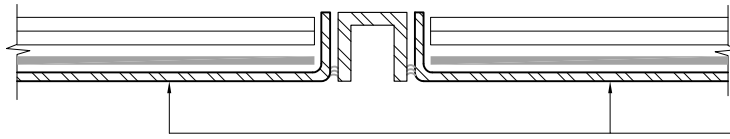
Date: 11/06/2013

Scale: N.T.S.

Sheet: 2 OF 6

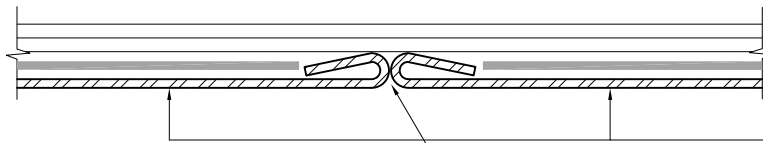


AMERICAN PRODUCTS, INC. (API)  
12157 W. LINEBAUGH AVENUE #335  
TAMPA, FL 33626  
CONTACT: KERRI BEALS  
PH (813) 925-0144  
WWW.AMERICANPROD.COM



API # 00PC  
BRAKE METAL CLADDING,  
FORMED-TO-SHAPE  
FINISH T.B.D  
(813)925-0144  
SPECS@AMERICANPROD.COM  
ATTN: KERRI BEALS

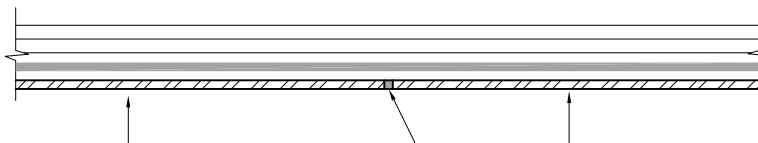
2 TYPICAL REVEAL SEAM  
P.1



BUTT SHEETS  
TOGETHER

API # 00PC  
BRAKE METAL CLADDING,  
FORMED-TO-SHAPE  
FINISH T.B.D  
(813)925-0144  
SPECS@AMERICANPROD.COM  
ATTN: KERRI BEALS

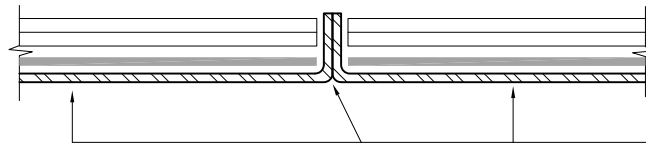
3 TYPICAL BUTT SEAM WITH HEMMED EDGES  
P.1



BUTT SHEETS  
TOGETHER

API # 00PC  
BRAKE METAL CLADDING,  
FORMED-TO-SHAPE  
FINISH T.B.D  
(813)925-0144  
SPECS@AMERICANPROD.COM  
ATTN: KERRI BEALS

8 TYPICAL BUTT SEAM WITH FLAT EDGES  
P.1



BUTT SHEETS  
TOGETHER

API # 00PC  
BRAKE METAL CLADDING,  
FORMED-TO-SHAPE  
FINISH T.B.D  
(813)925-0144  
SPECS@AMERICANPROD.COM  
ATTN: KERRI BEALS

10 TYPICAL BUTT SEAM WITH PAN BENDS  
P.1

API Recommends that this note appear with storefront elevations and section view details in your blueprints.

Storefront and related materials provided by American Products, Inc. (API). No substitutions without written consent from store owner/ Architect. API (813) 925-0144

Customer: API IN-HOUSE

Assembly: BRAKE METAL DETAILS

Drawn By: SMB

Date: 11/09/2012

Revision: SER

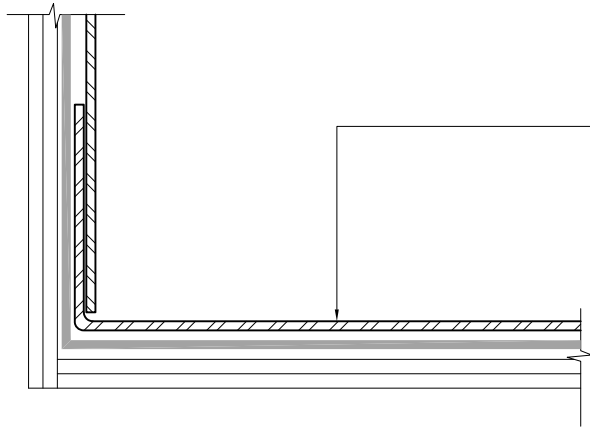
Date: 11/06/2013

Scale: N.T.S.

Sheet: 3 OF 6

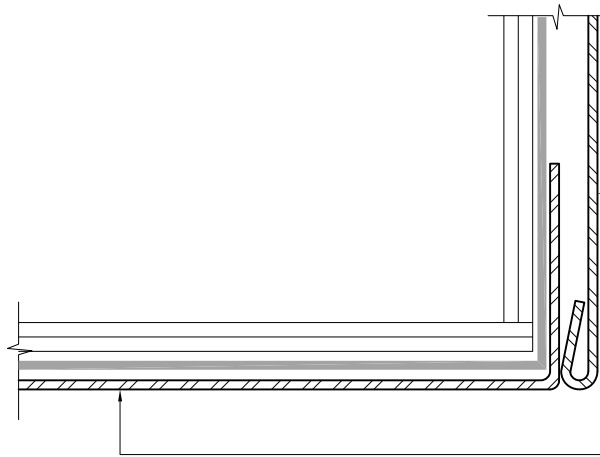


AMERICAN PRODUCTS, INC. (API)  
12157 W. LINEBAUGH AVENUE #335  
TAMPA, FL 33626  
CONTACT: KERRI BEALS  
PH (813) 925-0144  
WWW.AMERICANPROD.COM



API #00PC  
 BRAKE METAL CLADDING,  
 FORMED-TO-SHAPE  
 FINISH T.B.D  
 (813)925-0144  
 SPECS@AMERICANPROD.COM  
 ATTN: KERRI BEALS

**4** TYPICAL INSIDE CORNER SEAM  
 P.1



API #00PC  
 BRAKE METAL CLADDING,  
 FORMED-TO-SHAPE  
 FINISH T.B.D  
 (813)925-0144  
 SPECS@AMERICANPROD.COM  
 ATTN: KERRI BEALS

API #00PC  
 BRAKE METAL CLADDING,  
 FORMED-TO-SHAPE  
 FINISH T.B.D  
 (813)925-0144  
 SPECS@AMERICANPROD.COM  
 ATTN: KERRI BEALS

**5** TYPICAL OUTSIDE CORNER SEAM  
 P.1

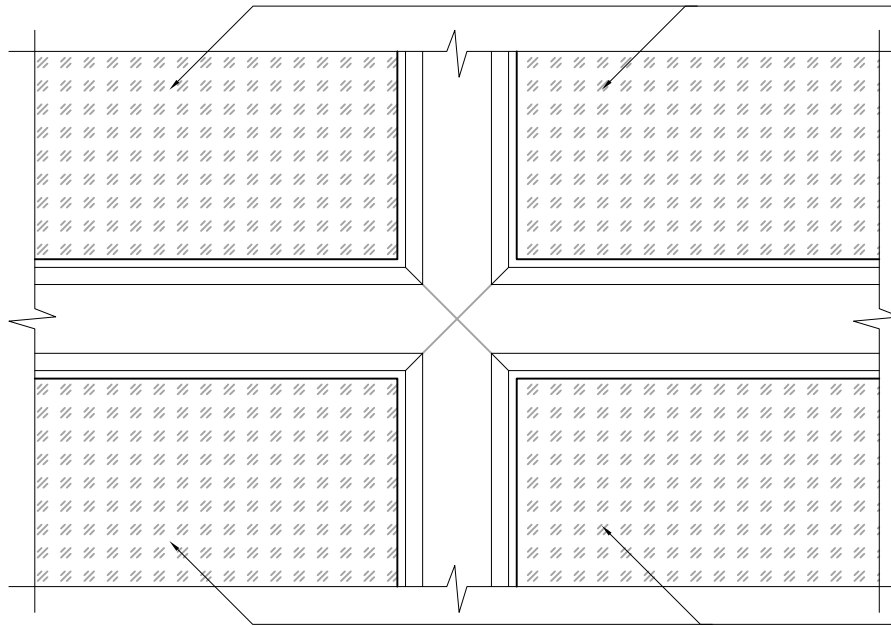
API Recommends that this note appear with storefront elevations and section view details in your blueprints.

Storefront and related materials provided by American Products, Inc. (API). No substitutions without written consent from store owner/Architect. API (813) 925-0144

Customer: API IN-HOUSE	
Assembly: BRAKE METAL DETAILS	
Drawn By: SMB	Date: 11/09/2012
Revision: SER	Date: 11/06/2013
Scale: N.T.S.	Sheet: 4 OF 6



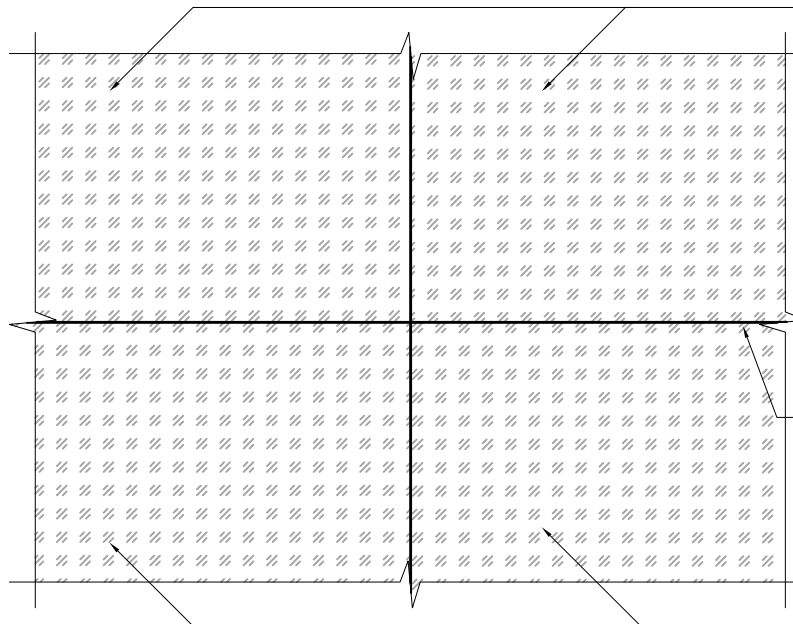
AMERICAN PRODUCTS, INC. (API)  
 12157 W. LINEBAUGH AVENUE #335  
 TAMPA, FL 33626  
 CONTACT: KERRI BEALS  
 PH (813) 925-0144  
 WWW.AMERICANPROD.COM



API # 00PC  
BRAKE METAL CLADDING,  
FORMED-TO-SHAPE  
FINISH T.B.D  
(813)925-0144  
SPECS@AMERICANPROD.COM  
ATTN: KERRI BEALS

**6** TYPICAL REVEAL SEAM  
P.3 ELEVATION VIEW OF FOUR PANELS MEETING

API # 00PC  
BRAKE METAL CLADDING,  
FORMED-TO-SHAPE  
FINISH T.B.D  
(813)925-0144  
SPECS@AMERICANPROD.COM  
ATTN: KERRI BEALS



API # 00PC  
BRAKE METAL CLADDING,  
FORMED-TO-SHAPE  
FINISH T.B.D  
(813)925-0144  
SPECS@AMERICANPROD.COM  
ATTN: KERRI BEALS

BUTTED SEAM

**7** TYPICAL ABUTTING SEAM  
P.3 ELEVATION VIEW OF FOUR PANELS MEETING

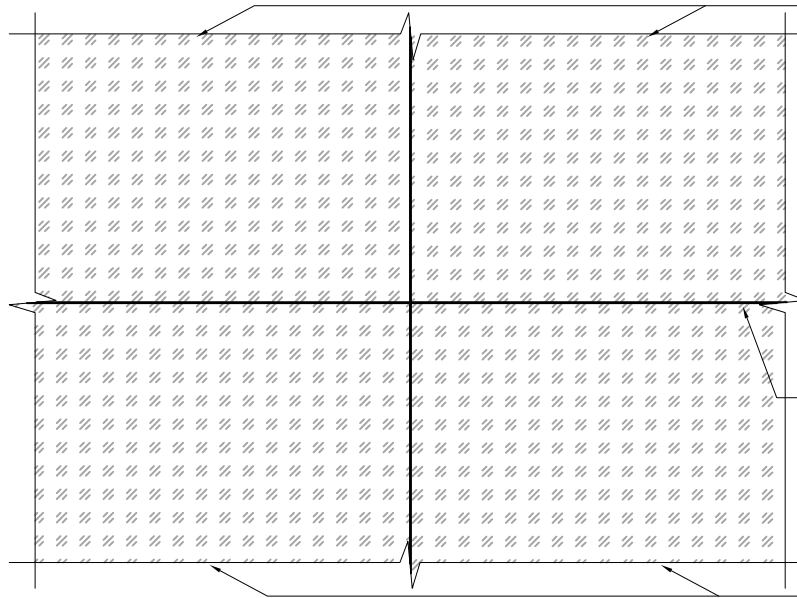
API # 00PC  
BRAKE METAL CLADDING,  
FORMED-TO-SHAPE  
FINISH T.B.D  
(813)925-0144  
SPECS@AMERICANPROD.COM  
ATTN: KERRI BEALS

API Recommends that this note appear with storefront elevations and section view details in your blueprints.  
Storefront and related materials provided by American Products, Inc. (API). No substitutions without written consent from store owner/Architect. API (813) 925-0144

Customer: API IN-HOUSE	
Assembly: BRAKE METAL DETAILS	
Drawn By: SMB	Date: 11/09/2012
Revision: SER	Date: 11/06/2013
Scale: N.T.S.	Sheet: 5 OF 6



AMERICAN PRODUCTS, INC. (API)  
12157 W. LINEBAUGH AVENUE #335  
TAMPA, FL 33626  
CONTACT: KERRI BEALS  
PH (813) 925-0144  
WWW.AMERICANPROD.COM

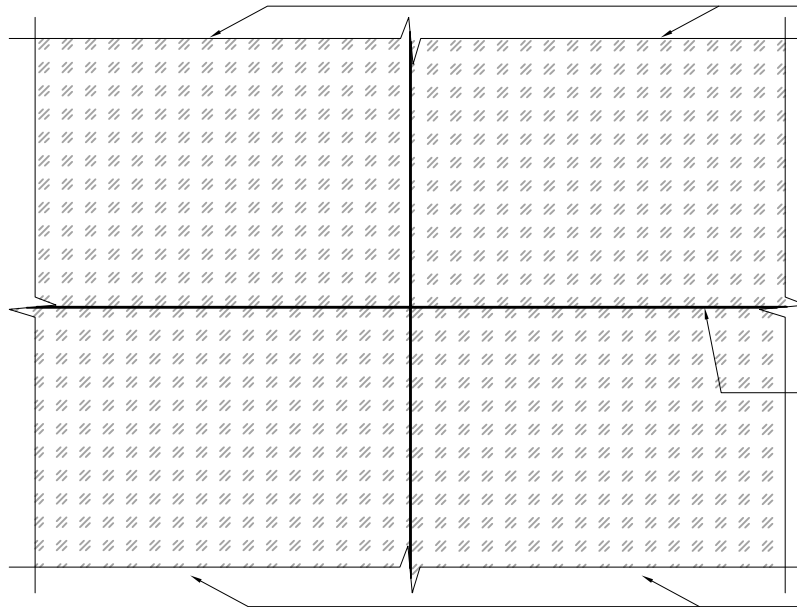


API # 00PC  
BRAKE METAL CLADDING,  
FORMED-TO-SHAPE  
FINISH T.B.D  
(813)925-0144  
SPECS@AMERICANPROD.COM  
ATTN: KERRI BEALS

BUTTED SEAM

API # 00PC  
BRAKE METAL CLADDING,  
FORMED-TO-SHAPE  
FINISH T.B.D  
(813)925-0144  
SPECS@AMERICANPROD.COM  
ATTN: KERRI BEALS

**9** TYPICAL REVEAL SEAM  
P.3 ELEVATION VIEW OF FOUR PANELS MEETING



API # 00PC  
BRAKE METAL CLADDING,  
FORMED-TO-SHAPE  
FINISH T.B.D  
(813)925-0144  
SPECS@AMERICANPROD.COM  
ATTN: KERRI BEALS

BUTTED SEAM

API # 00PC  
BRAKE METAL CLADDING,  
FORMED-TO-SHAPE  
FINISH T.B.D  
(813)925-0144  
SPECS@AMERICANPROD.COM  
ATTN: KERRI BEALS

**11** TYPICAL ABUTTING SEAM  
P.3 ELEVATION VIEW OF FOUR PANELS MEETING

API Recommends that this note appear with storefront elevations and section view details in your blueprints.  
Storefront and related materials provided by American Products, Inc. (API). No substitutions without written consent from store owner/Architect. API (813) 925-0144

Customer: API IN-HOUSE	
Assembly: BRAKE METAL DETAILS	
Drawn By: SMB	Date: 11/09/2012
Revision: SER	Date: 11/06/2013
Scale: N.T.S.	Sheet: 6 OF 6



AMERICAN PRODUCTS, INC. (API)  
12157 W. LINEBAUGH AVENUE #335  
TAMPA, FL 33626  
CONTACT: KERRI BEALS  
PH (813) 925-0144  
WWW.AMERICANPROD.COM