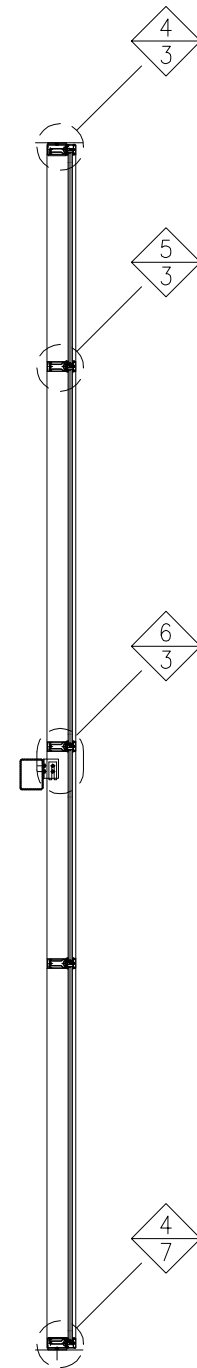


Elevation



Section
A ARCH. REF.
 SCALE: NTS

Bill of Materials	
Part	Part No.
2 1/2"x5 1/4" Light Mullion for 1" glass	CW750-001
2 1/2"x5 1/4" Heavy Mullion for 1" glass	CW750-002
3/4" snap on Cap	CW750-003
Pressure Plate	CW750-150
Perimeter Pressure Plate	CW750-151
T Anchor	CW750-152
F Anchor	CW750-153
Shear Block	CW750-154
Head/Sill Shear Block	CW750-155
Perimeter F Anchor	CW750-156
Joint Plug	CW750-375
Glazing Gasket	CW750-376
Thermal Break	CW750-377
Perimeter Gasket	CW750-378
1" Setting Block	CW750-379
#12x1 7/8" PH	FA0004
#12x7/8" PH	FA0005
1/4"x1" hex head	FA0006

AMERICAN PRODUCTS, INC. (API)
 12157 W. LINEBAUGH AVENUE #335
 TAMPA, FL 33626
 CONTACT: KERRI BEALS
 PH (813)925-0144
 WWW.AMERICANPROD.COM



Customer: API	Assembly: 2-1/2" x 7-1/2" Curtain Wall SSG
Drawn By: SMB	Date: 09/12/13
Revision:	Date:
Scale: N.T.S	Sheet: 1 OF 5

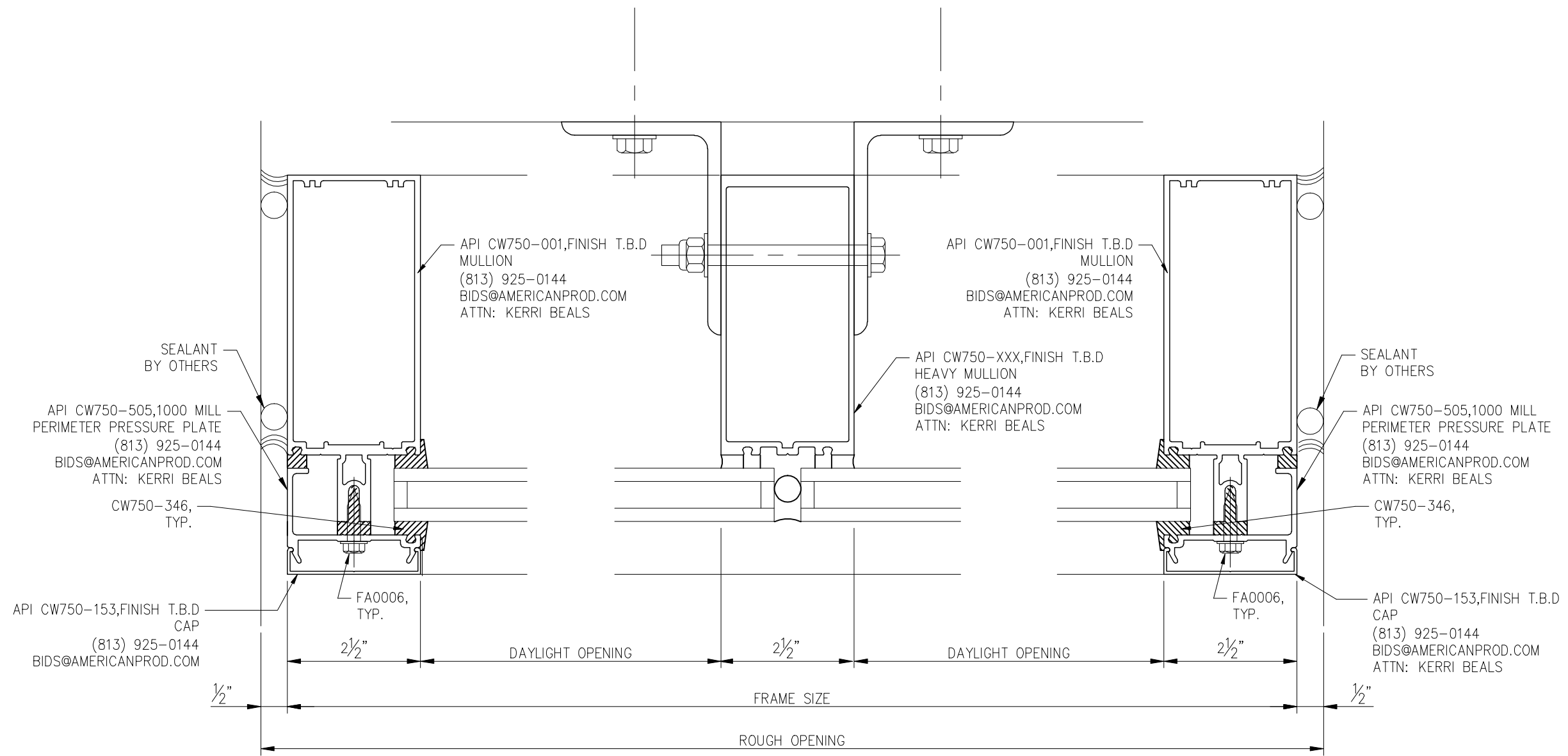
API Recommends that this note appear with storefront elevations and section view details in your blueprints.
 Storefront and related materials provided by American Products, Inc. (API). No substitutions without written consent from store owner/
 Architect: API (813)925-0144

AMERICAN PRODUCTS, INC. (API)
 12157 W. LINEBAUGH AVENUE #335
 TAMPA, FL 33626
 CONTACT: KERRI BEALS
 PH (813)925-0144
 WWW.AMERICANPROD.COM



Customer: API	Assembly: 2-1/2" x 7-1/2" Curtain Wall SSG	Date: 09/12/13	Sheet: 2 OF 5
Drawn By: SMB	Revision:	Date:	
Scale: N.T.S			

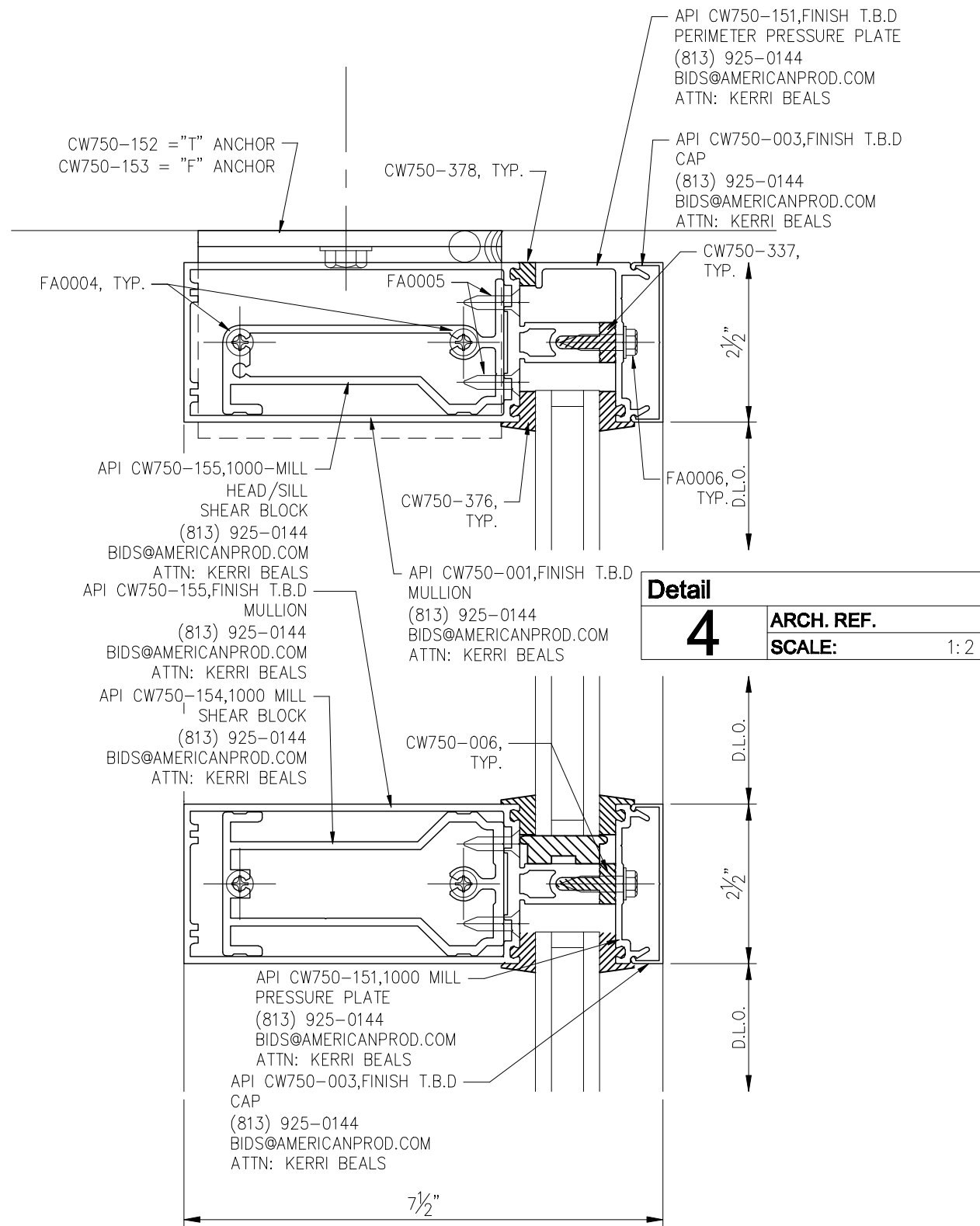
API Recommends that this note appear with storefront elevations and section view details in your blueprints.
 Storefront and related materials provided by American Products, Inc. (API). No substitutions without written consent from store owner/
 Architect: API (813)925-0144



Detail	
1	ARCH. REF. SCALE: NTS

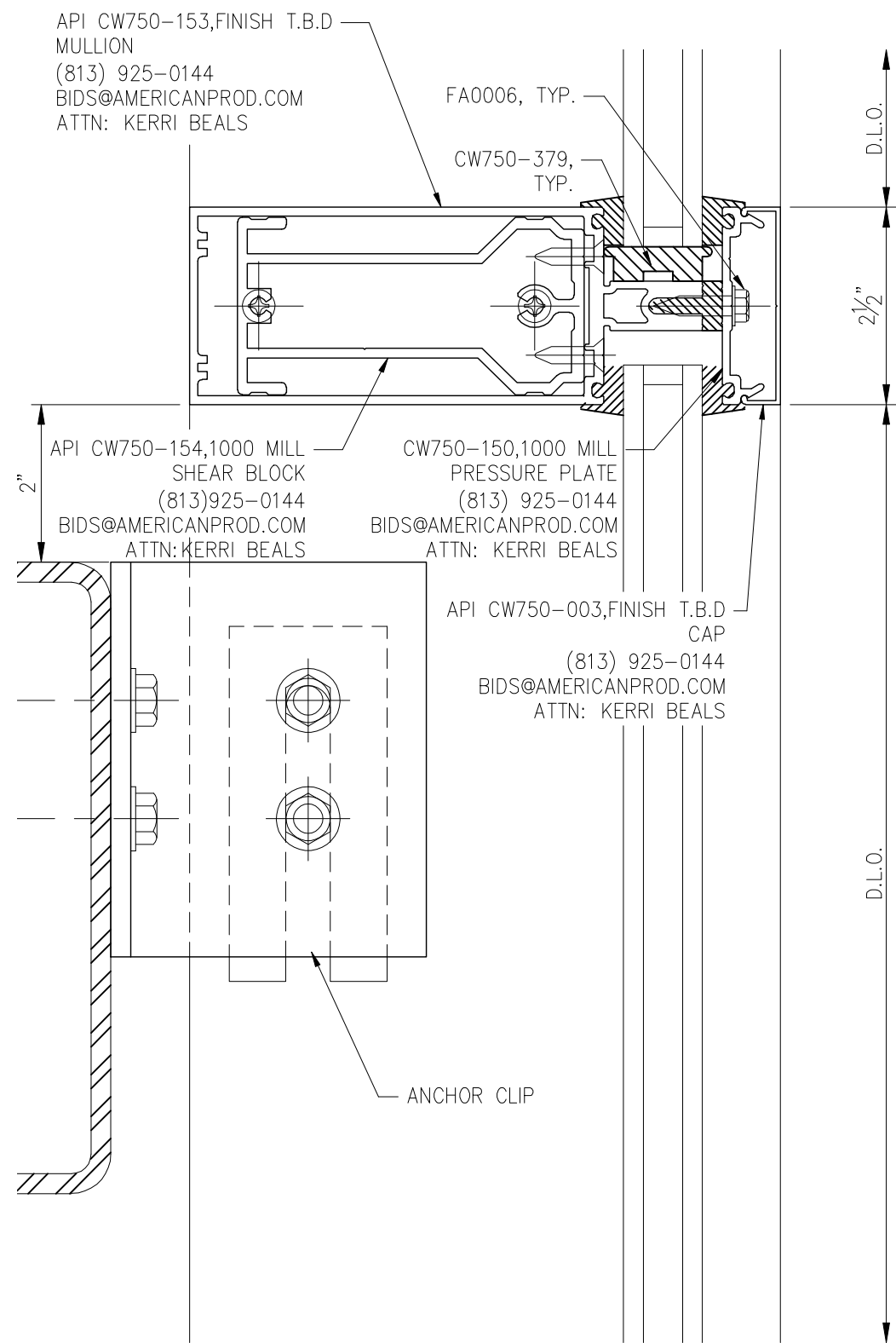
Detail	
2	ARCH. REF. SCALE: NTS

Detail	
3	ARCH. REF. SCALE: NTS



Detail	
4	ARCH. REF. SCALE: 1:2

Detail	
5	ARCH. REF. SCALE: NTS



Detail	
6	ARCH. REF. SCALE: NTS

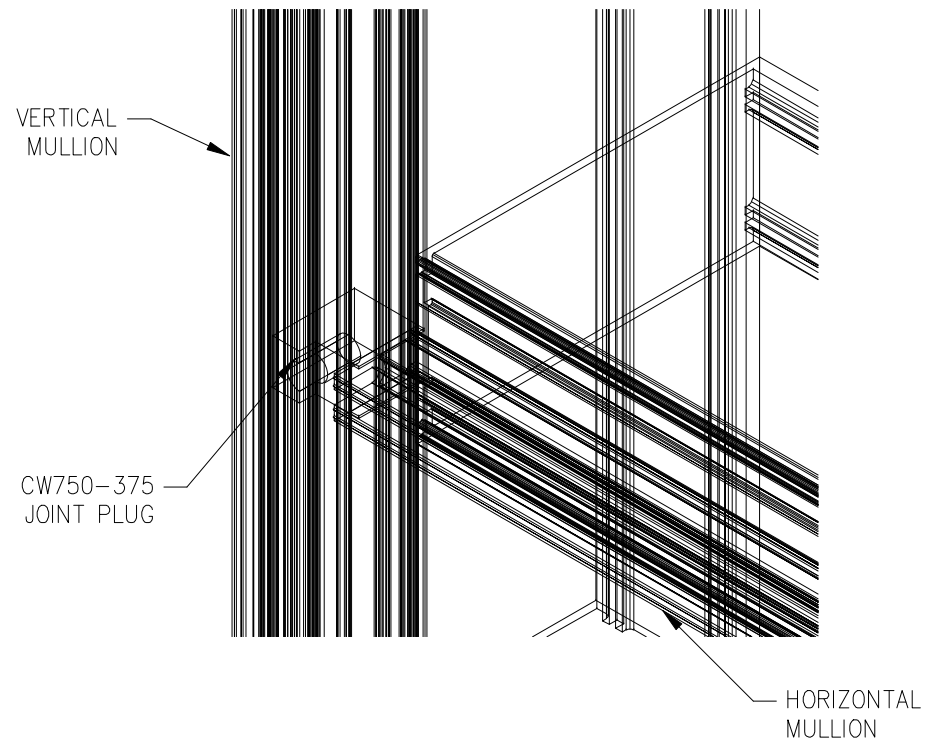
AMERICAN PRODUCTS, INC. (API)
12157 W. LINEBAUGH AVENUE #335
TAMPA, FL 33626
CONTACT: KERRI BEALS
PH (813)925-0144
WWW.AMERICANPROD.COM

API
AMERICAN PRODUCTS, INC.

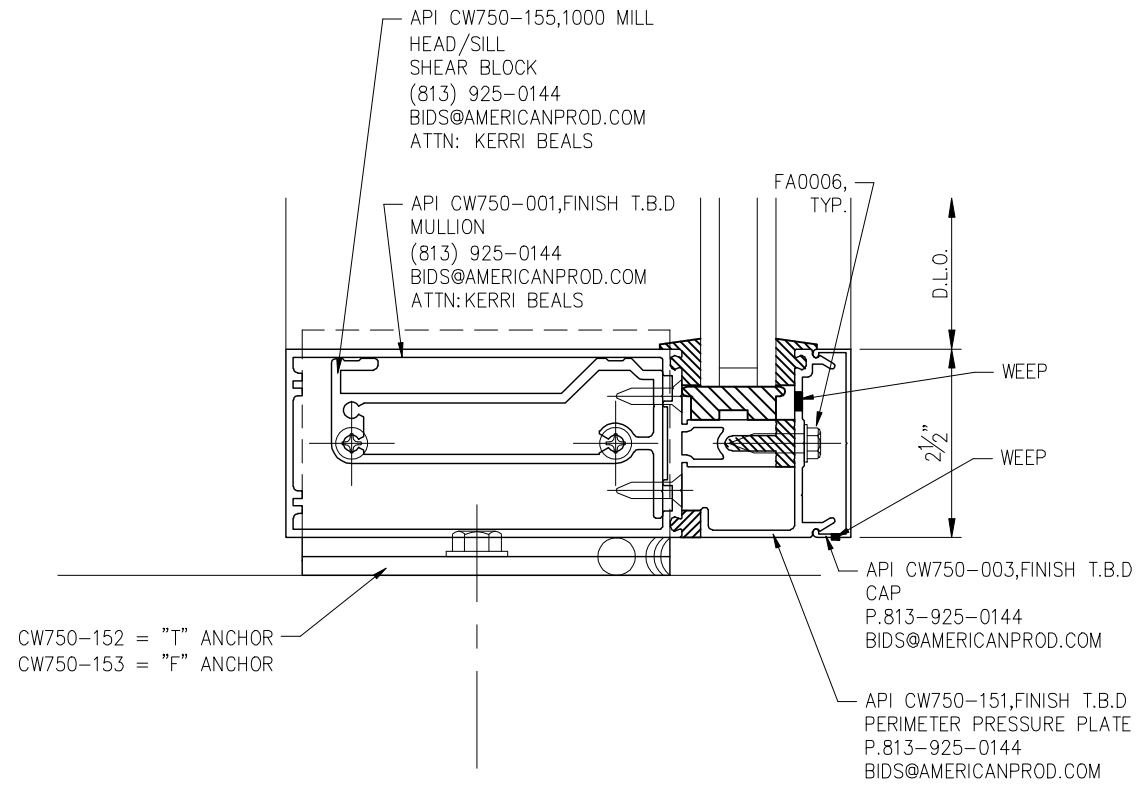
Customer: API	Assembly: 2-1/2" x 7-1/2" Curtain Wall SSG	Date: 09/12/13	Sheet: 3 OF 5
Drawn By: SMB	Revision:	Date:	
Scale: N.T.S			

API Recommends that this note appear with storefront elevations and section view details in your blueprints.

Storefront and related materials provided by American Products, Inc. (API). No substitutions without written consent from store owner/
Architect: API (813)925-0144



Typical Horizontal / Vertical Intersection

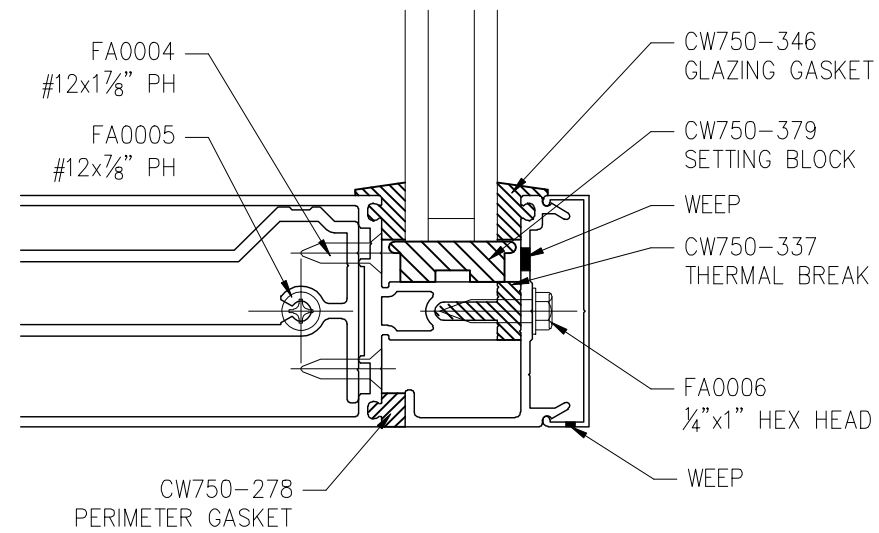


CW750-152 = "T" ANCHOR
 CW750-153 = "F" ANCHOR

API CW750-003, FINISH T.B.D CAP P.813-925-0144 BIDS@AMERICANPROD.COM

API CW750-151, FINISH T.B.D PERIMETER PRESSURE PLATE P.813-925-0144 BIDS@AMERICANPROD.COM

Detail	
7	ARCH. REF.
	SCALE: NTS



Typical Assembly Detail

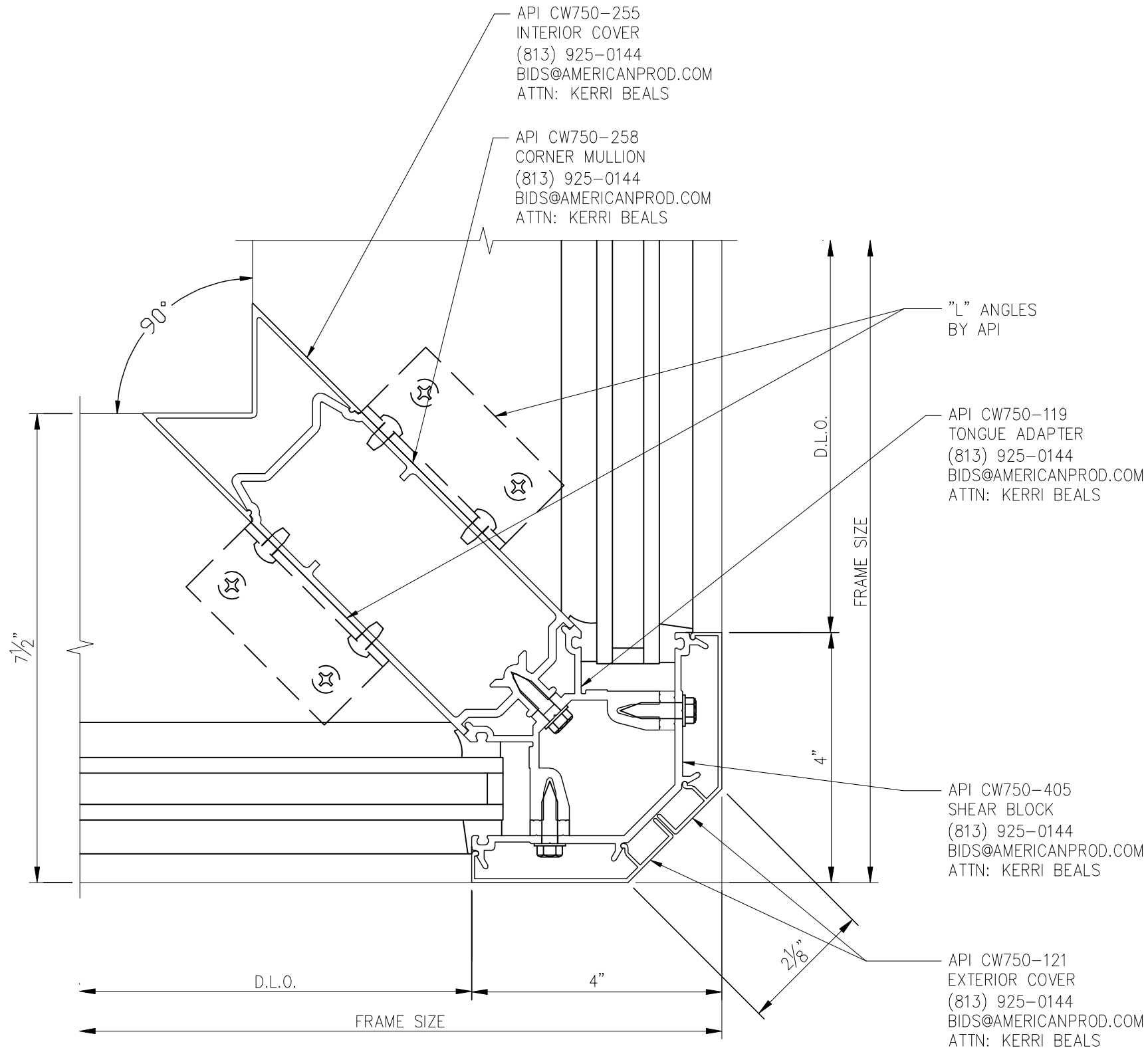
AMERICAN PRODUCTS, INC. (API)
 12157 W. LINEBAUGH AVENUE #335
 TAMPA, FL 33626
 CONTACT: KERRI BEALS
 PH (813)925-0144
 WWW.AMERICANPROD.COM



Customer: API	Assembly: 2-1/2" x 7-1/2" Curtain Wall SSG
Drawn By: SW	Date: 12/13/10
Revision: GB	Date: 05/13/13
Scale: N.T.S	Sheet: 4 OF 5

API Recommends that this note appear with storefront elevations and section view details in your blueprints.

Storefront and related materials provided by American Products, Inc. (API). No substitutions without written consent from store owner/
 Architect: API (813)925-0144



API CW750-255
INTERIOR COVER
(813) 925-0144
BIDS@AMERICANPROD.COM
ATTN: KERRI BEALS

API CW750-258
CORNER MULLION
(813) 925-0144
BIDS@AMERICANPROD.COM
ATTN: KERRI BEALS

"L" ANGLES
BY API

API CW750-119
TONGUE ADAPTER
(813) 925-0144
BIDS@AMERICANPROD.COM
ATTN: KERRI BEALS

API CW750-405
SHEAR BLOCK
(813) 925-0144
BIDS@AMERICANPROD.COM
ATTN: KERRI BEALS

API CW750-121
EXTERIOR COVER
(813) 925-0144
BIDS@AMERICANPROD.COM
ATTN: KERRI BEALS

90° OUTSIDE CORNER

Detail	
7	ARCH. REF.
	SCALE: NTS

API Recommends that this note appear with storefront elevations and section view details in your blueprints.
Storefront and related materials provided by American Products, Inc. (API). No substitutions without written consent from store owner/
Architect: API (813)925-0144

Customer: API	Assembly: 2-1/2" x 7-1/2" Curtain Wall SSG
Drawn By: SMB	Date: 09/12/13
Revision:	Date:
Scale: N.T.S	Sheet: 5 OF 5



AMERICAN PRODUCTS, INC. (API)
12157 W. LINEBAUGH AVENUE #335
TAMPA, FL 33626
CONTACT: KERRI BEALS
PH (813)925-0144
WWW.AMERICANPROD.COM