



Store #1234 - Somewhere Town Center
Anywhere, USA 12345

LINEAR CEILING (BEAM) SHOP DRAWINGS BY API

AMERICAN PRODUCTS, INC. (API)
13909 LYNMAR BOULEVARD
TAMPA, FL 33626
CONTACT: KERRI BEALS
PH (813)925-0144
WWW.AMERICANPRODUCTS.COM



Customer: API IN-HOUSE	Date: 11/01/2018
Assembly: LINEAR CEILING (BEAM)	Date: ...
Drawn By: JD	Sheet: 1 OF 9
Revised By:	Scale: NTS

NOTES:

1. ALL DIMENSIONS SHOWN SHALL BE VERIFIED BY CUSTOMER PRIOR TO FABRICATION.

MATERIAL / FINISH SCHEDULE					FASTENER SCHEDULE		
MATERIAL	ALLOY / STD.	THK. / SIZE	FINISH	QTY.	#	DESCRIPTION	QTY.
BEAM EXTRUSION	6063-T5	--	CUSTOM TBD POWDER COAT		1	1/4"-28 x 5/8" SET SCREW	
--	--	--	--		2	3/8" x 3/4"OD PUSH NUT	
--	--	--	--		3	--	
--	--	--	--		4	--	
--	--	--	--		5	--	
--	--	--	--		6	--	
--	--	--	--		7	--	
NOTE: POWDER COAT BY API.					8	--	
					9	--	
					A	--	
					B	--	
					C	--	

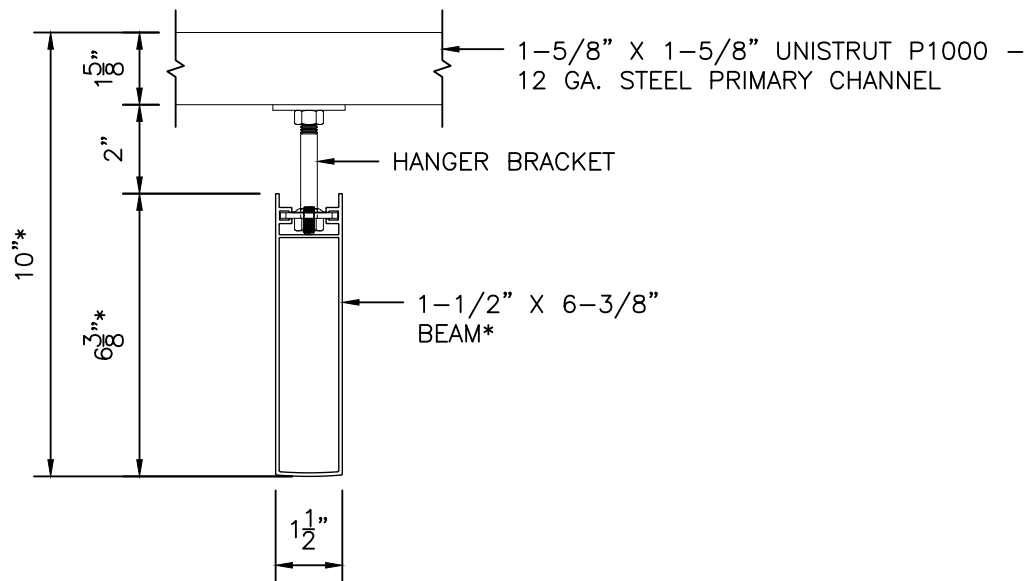
NOTE: ALL NUMBERED FASTENERS LISTED ARE SUPPLIED BY API. ALL LETTERED FASTENERS ARE BY OTHERS.

ABBREVIATIONS

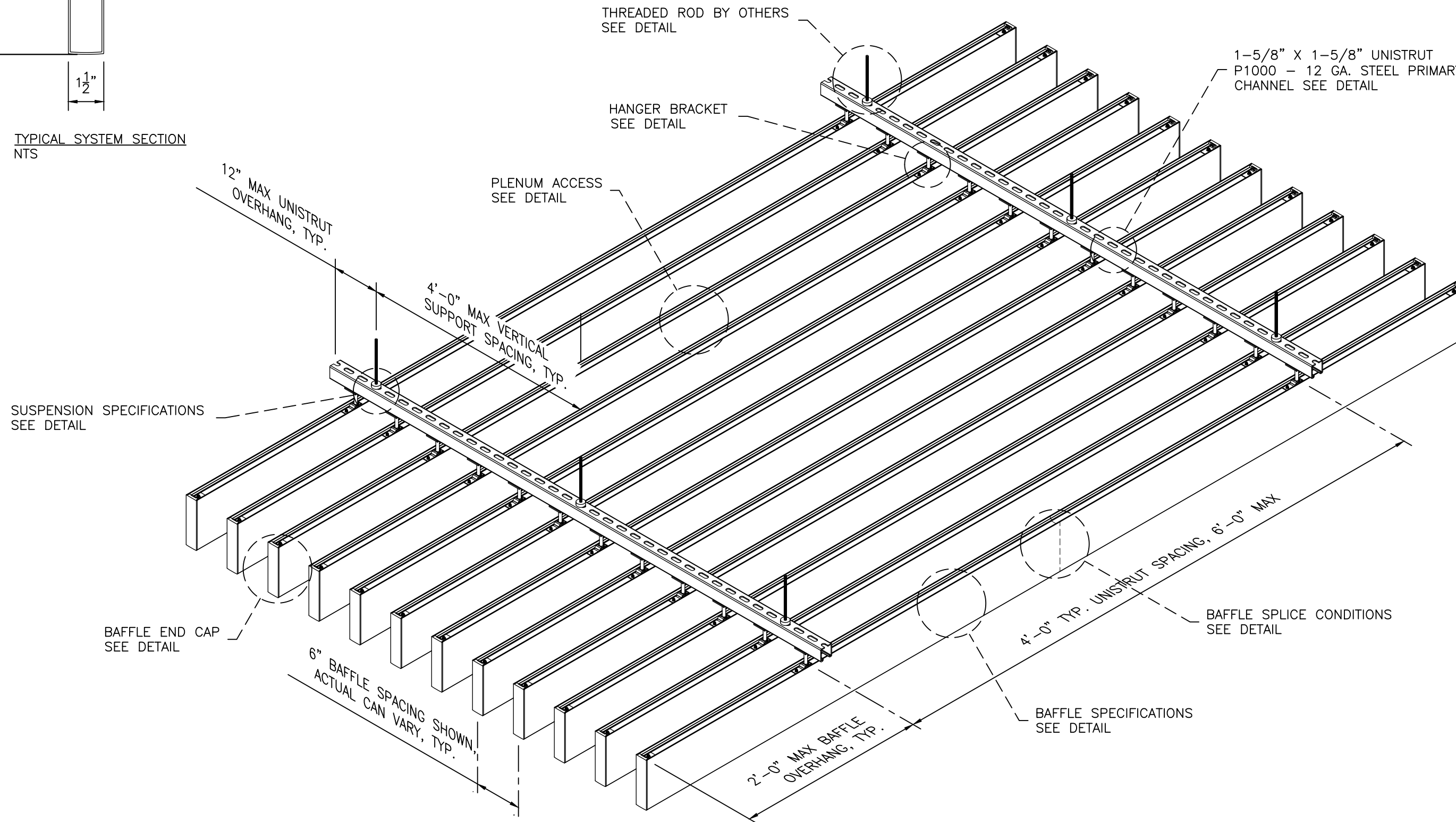
VIF = VERIFY IN FIELD	TYP = TYPICAL	FN = FINISHED NUT
FS = FRAME SIZE	UON = UNLESS OTHERWISE NOTED	FW = FLAT WASHER
DLO = DAY LIGHT OPENING	HWH = HEX WASHER HEAD	
DO = DOOR OPENING	SDS = SELF-DRILLING SCREW	
OA = OVERALL	PD = PHILLIPS DRIVE	
RO = ROUGH OPENING	PT = POINT	

These shop drawings remain the property of API/FenWall and contain proprietary, competitive information which if released to any party other than the intended recipient, could cause an undetermined amount of harm to API/FenWall. Any reproduction and distribution of said drawings without the express written consent of API/FenWall is strictly prohibited. Any charge for shop drawings, paid or owed by the intended recipient to API/FenWall is considered a rental charge for the right to utilize said drawings in order to conduct business with API/FenWall.

API Recommends that this note appear with storefront elevations and section view details in your blueprints.
Storefront and related materials provided by American Products, Inc. (API). No substitutions without written consent from store owner/Architect. API (813)925-0144



TYPICAL SYSTEM SECTION
NTS



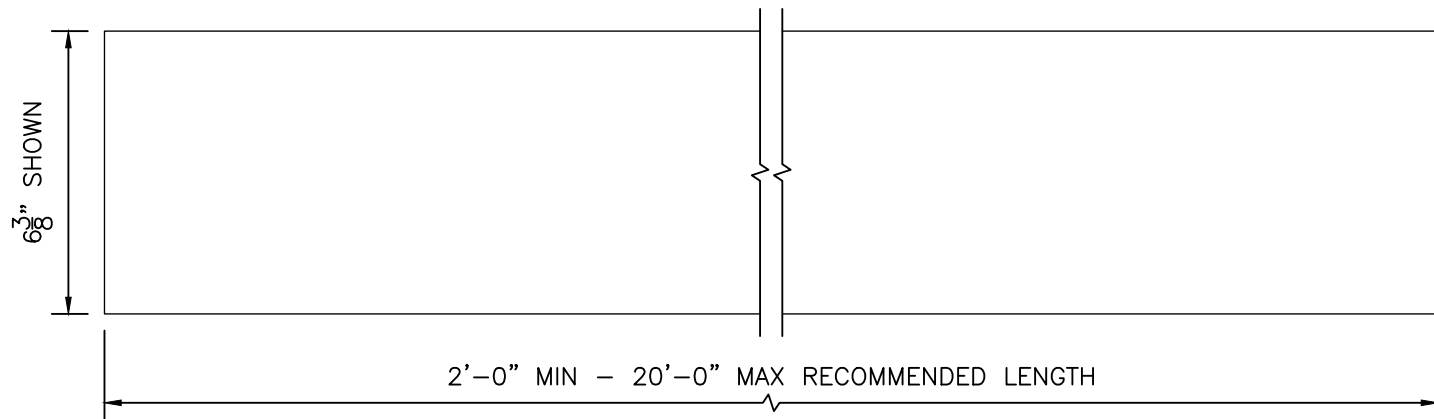
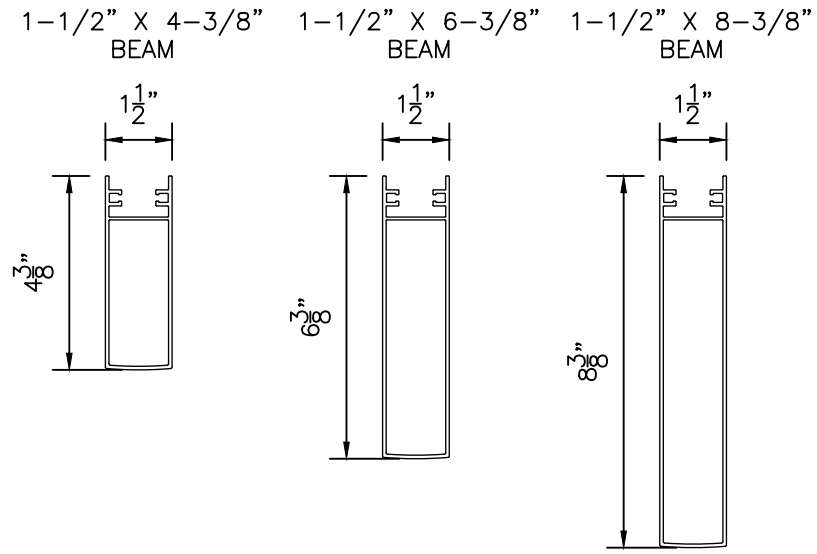
*1-1/2" X 6-3/8" BEAM PROFILE SHOWN, ALL PROFILES SIMILAR

AMERICAN PRODUCTS, INC. (API)
13909 LYNNMAR BOULEVARD
TAMPA, FL 33626
CONTACT: KERRI BEALS
PH (813)925-0144
WWW.AMERICANPRODUCTS.COM



Customer: API IN-HOUSE	Date: 11/01/2018	Sheet: 2 OF 9
Assembly: LINEAR CEILING (BEAM)	Date: ...	
Drawn By: JD		
Revised By:		
Scale: NTS		

API Recommends that this note appear with storefront elevations and section view details in your blueprints.
Storefront and related materials provided by American Products, Inc. (API). No substitutions without written consent from store owner/Architect. API (813)925-0144



BAFFLE PROFILES & SIZES
NTS

BAFFLE PROFILES & SIZES

CUSTOM SIZES AVAILABLE:
1-1/2" OR 2" WIDTH UP TO 8" HEIGHT
1-1/2" TO 4" WIDTH UP TO 6" HEIGHT
CONTACT API

BAFFLE MATERIAL

EXTRUDED ALUMINUM ALLOY 6063-T5

BAFFLE FINISHES

PAINTED & POWDER COATED

DECORATED WOOD FINISH (POWDER COATED)

WOOD VENEER (PROFILE SPECIFIC, CONTACT API)

API Recommends that this note appear with storefront elevations and section view details in your blueprints.

Storefront and related materials provided by American Products, Inc. (API). No substitutions without written consent from store owner/Architect. API (813)925-0144

Customer: API IN-HOUSE

Assembly: LINEAR CEILING (BEAM)

Drawn By: JD

Revised By:

Scale: NTS

Date: 11/01/2018

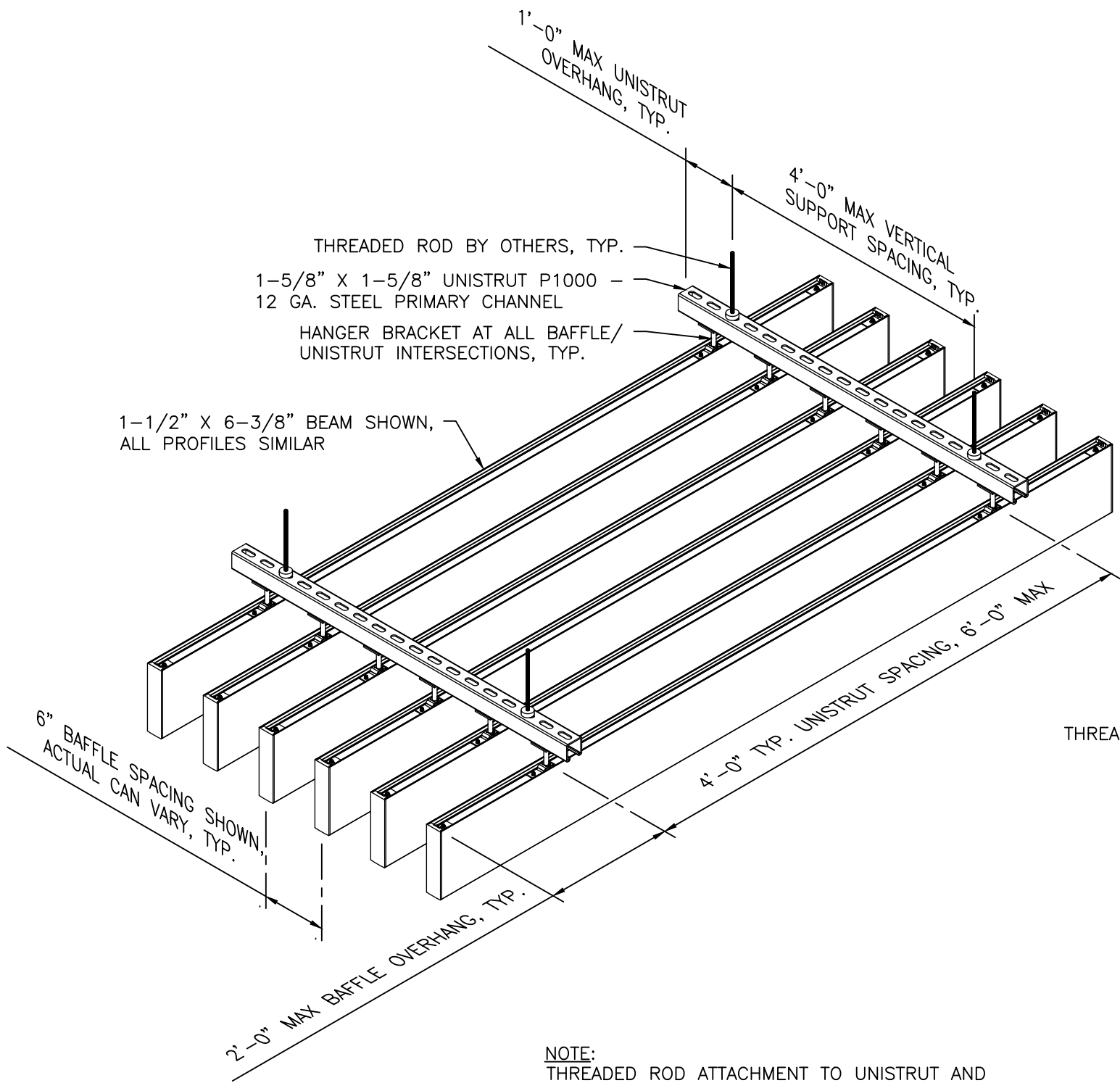
Date:

Sheet: 3 OF 9

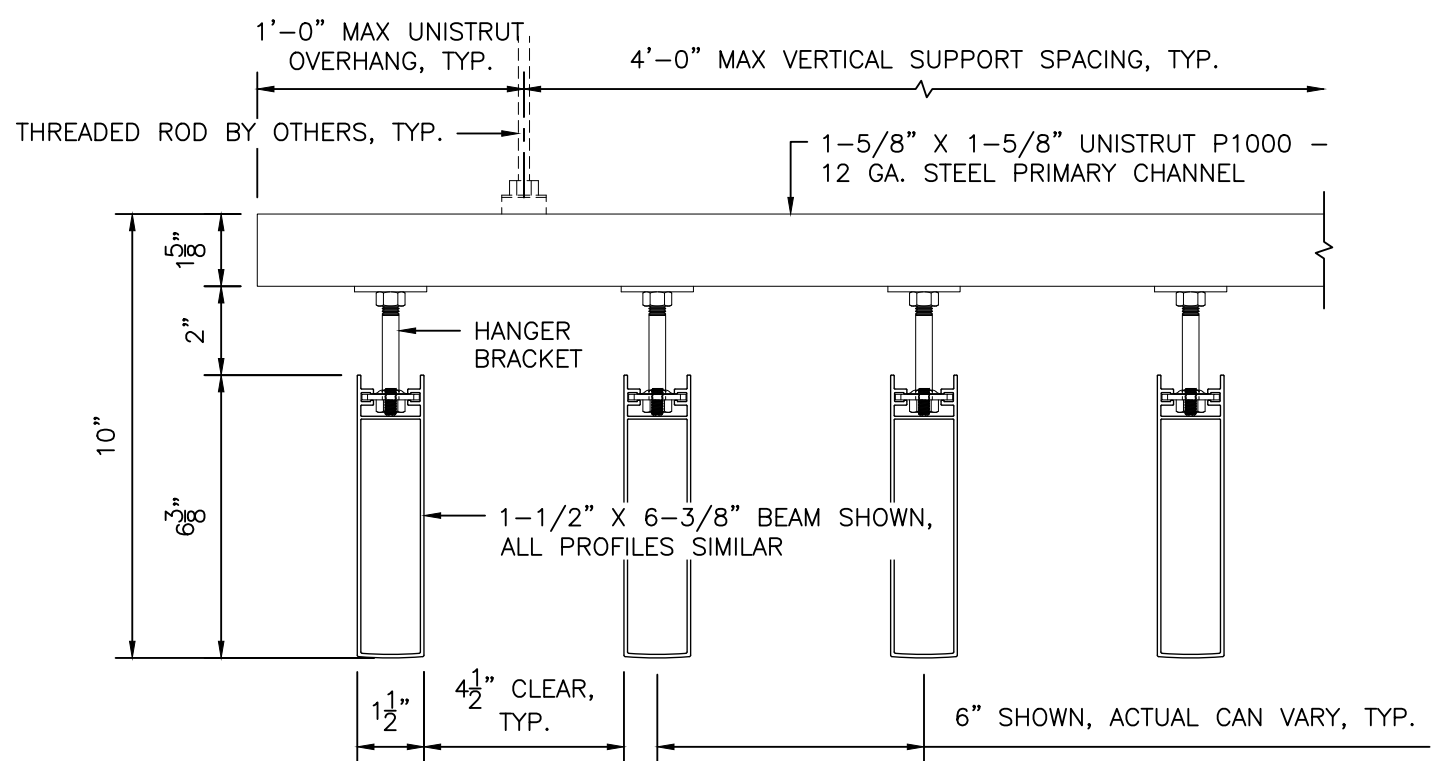
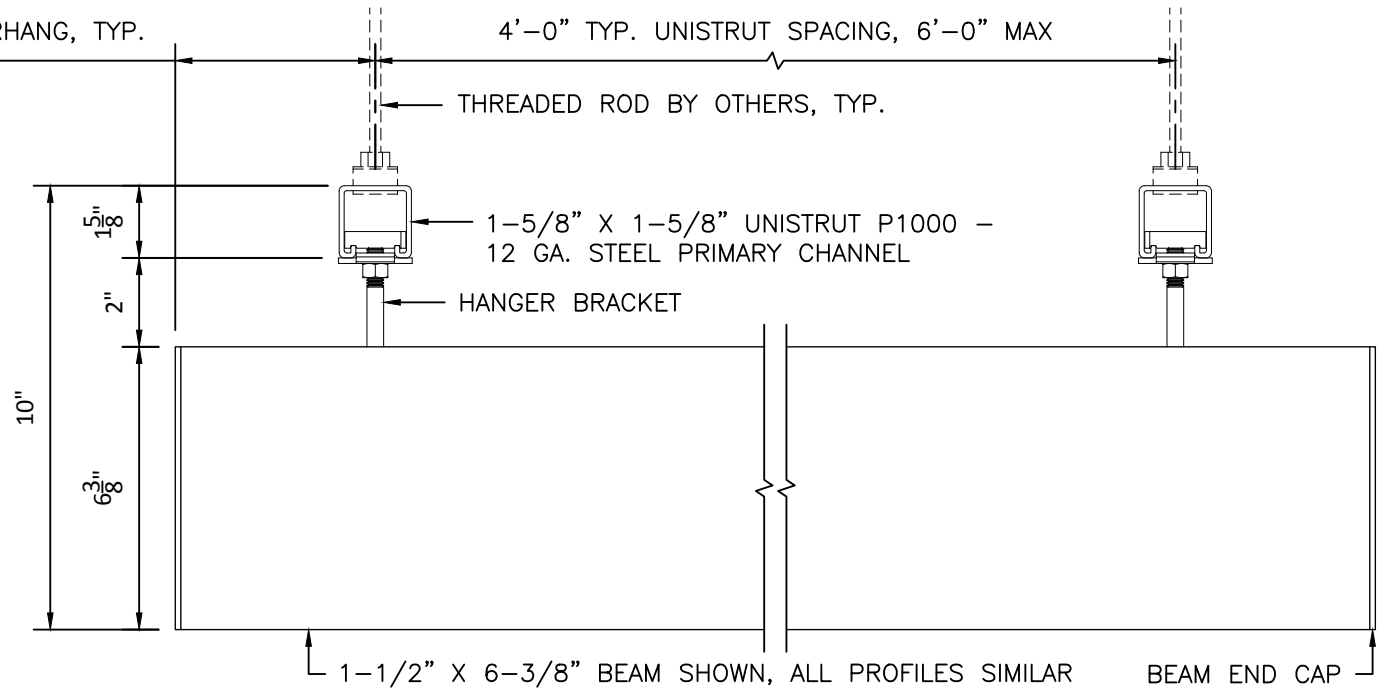


AMERICAN PRODUCTS, INC.

AMERICAN PRODUCTS, INC. (API)
13909 LYNMAR BOULEVARD
TAMPA, FL 33626
CONTACT: KERRI BEALS
PH (813)925-0144
WWW.AMERICANPRODUCTS.COM



NOTE:
 THREADED ROD ATTACHMENT TO UNISTRUT AND STRUCTURE ABOVE DESIGNED AND PROVIDED BY OTHERS. INSTALLER TO ENSURE HANGING METHOD DOES NOT INTERFERE WITH THE MOVEMENT OF HANGER BRACKET INSIDE OF UNISTRUT.



TYPICAL SECTIONS
 NTS

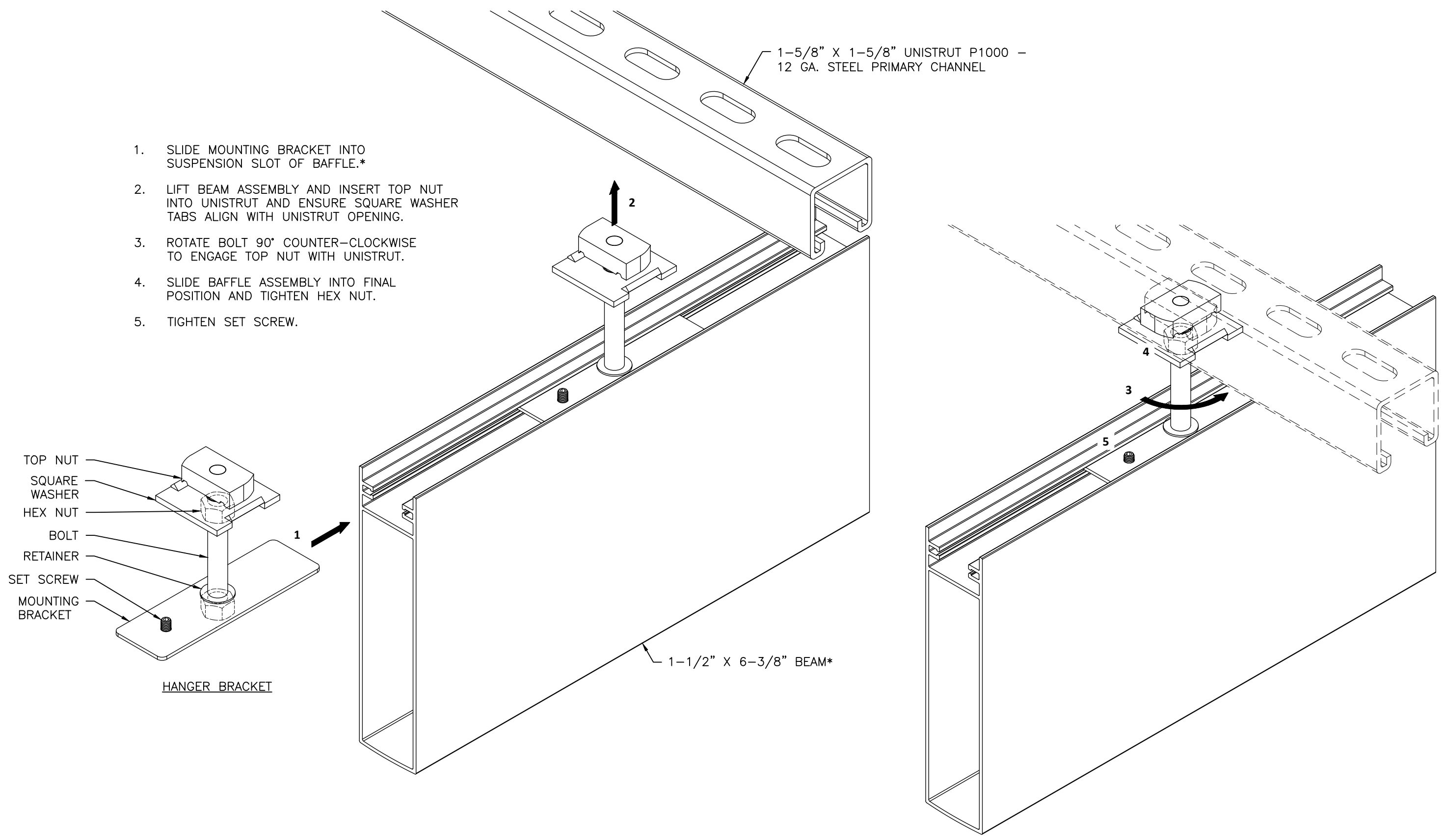
AMERICAN PRODUCTS, INC. (API)
 13909 LYNNMAR BOULEVARD
 TAMPA, FL 33626
 CONTACT: KERRI BEALS
 PH (813)925-0144
 WWW.AMERICANPRODUCTS.COM

Customer: API IN-HOUSE	Date: 11/01/2018	Sheet: 4 OF 9
Assembly: LINEAR CEILING (BEAM)	Date: ...	
Drawn By: JD		
Revised By:		
Scale: NTS		

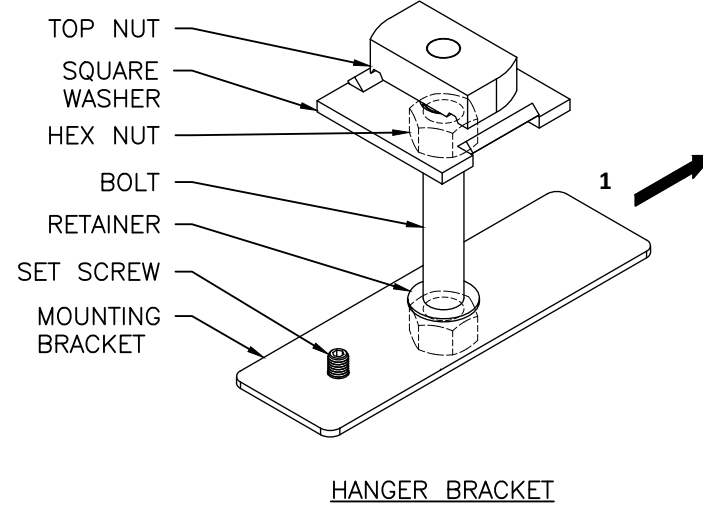
API Recommends that this note appear with storefront elevations and section view details in your blueprints.
 Storefront and related materials provided by American Products, Inc. (API). No substitutions without written consent from store owner/Architect. API (813)925-0144

Customer: API IN-HOUSE	
Assembly: LINEAR CEILING (BEAM)	
Drawn By: JD	Date: 11/01/2018
Revised By:	Date:
Scale: NTS	Sheet: 5 OF 9

API Recommends that this note appear with storefront elevations and section view details in your blueprints.
 Storefront and related materials provided by American Products, Inc. (API). No substitutions without written consent from store owner/Architect. API (813)925-0144



1. SLIDE MOUNTING BRACKET INTO SUSPENSION SLOT OF BAFFLE.*
2. LIFT BEAM ASSEMBLY AND INSERT TOP NUT INTO UNISTRUT AND ENSURE SQUARE WASHER TABS ALIGN WITH UNISTRUT OPENING.
3. ROTATE BOLT 90° COUNTER-CLOCKWISE TO ENGAGE TOP NUT WITH UNISTRUT.
4. SLIDE BAFFLE ASSEMBLY INTO FINAL POSITION AND TIGHTEN HEX NUT.
5. TIGHTEN SET SCREW.



1-5/8" X 1-5/8" UNISTRUT P1000 - 12 GA. STEEL PRIMARY CHANNEL

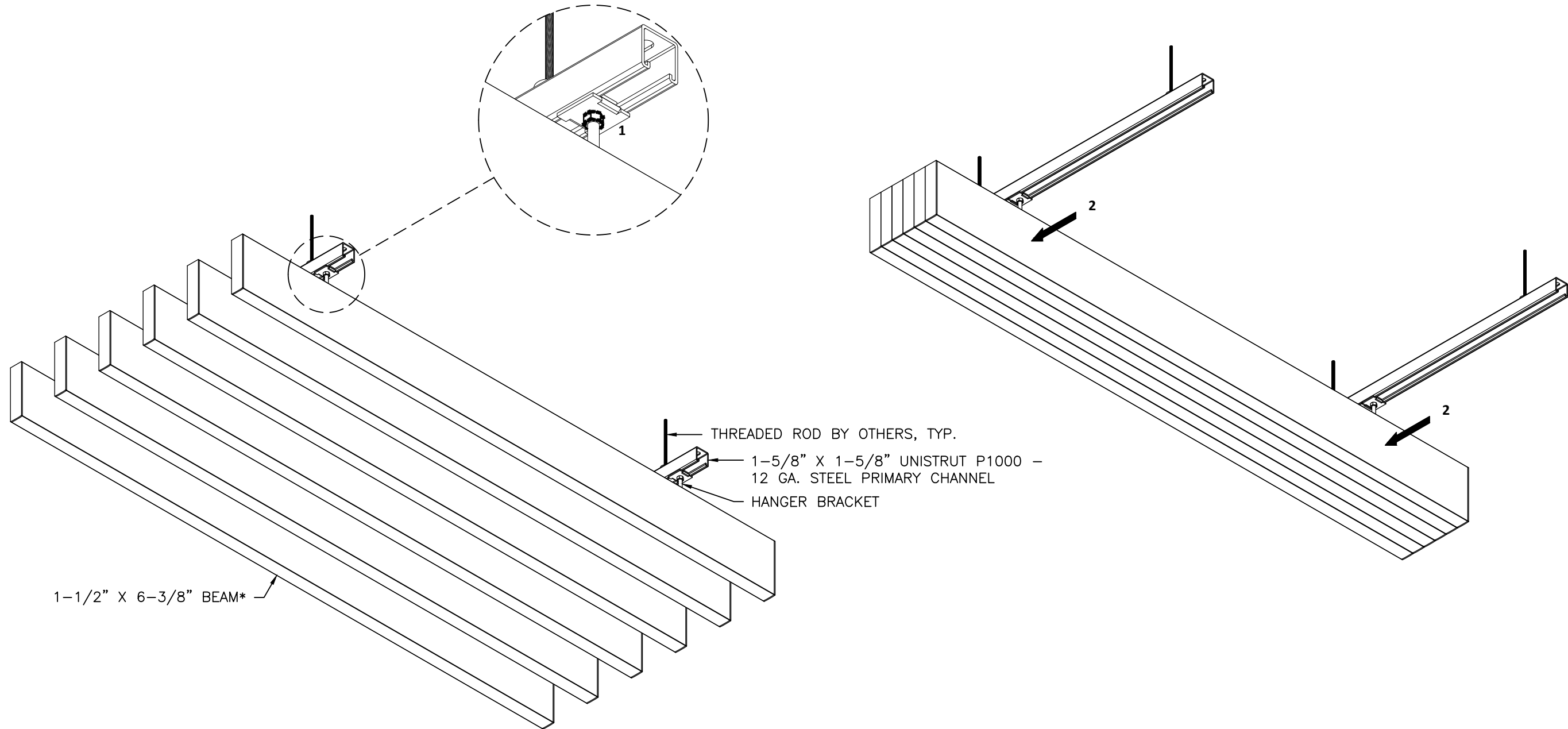
1-1/2" X 6-3/8" BEAM*

*1-1/2" X 6-3/8" BEAM PROFILE SHOWN, ALL PROFILES SIMILAR
 **VERTICAL SUPPORT OMITTED FOR CLARITY

1. LOOSEN HEX NUT AT ALL HANGER BRACKETS OF BAFFLES* REQUIRED FOR PLENUM ACCESS.
2. SLIDE BAFFLES EVENLY ALONG UNISTRUT TO ACCESS PLENUM. ENSURE TOP NUT REMAINS ENGAGED WITH UNISTRUT DURING ACCESS.

NOTE:
CREATE SMALLEST POSSIBLE OPENING FOR PLENUM ACCESS AND AVOID LARGE CONCENTRATIONS OF STACKED BAFFLES.

NOTE:
THREADED ROD ATTACHMENT TO UNISTRUT AND STRUCTURE ABOVE DESIGNED AND PROVIDED BY OTHERS. INSTALLER TO ENSURE HANGING METHOD DOES NOT INTERFERE WITH THE MOVEMENT OF HANGER BRACKET INSIDE OF UNISTRUT.



1-1/2" X 6-3/8" BEAM*

THREADED ROD BY OTHERS, TYP.
1-5/8" X 1-5/8" UNISTRUT P1000 - 12 GA. STEEL PRIMARY CHANNEL
HANGER BRACKET

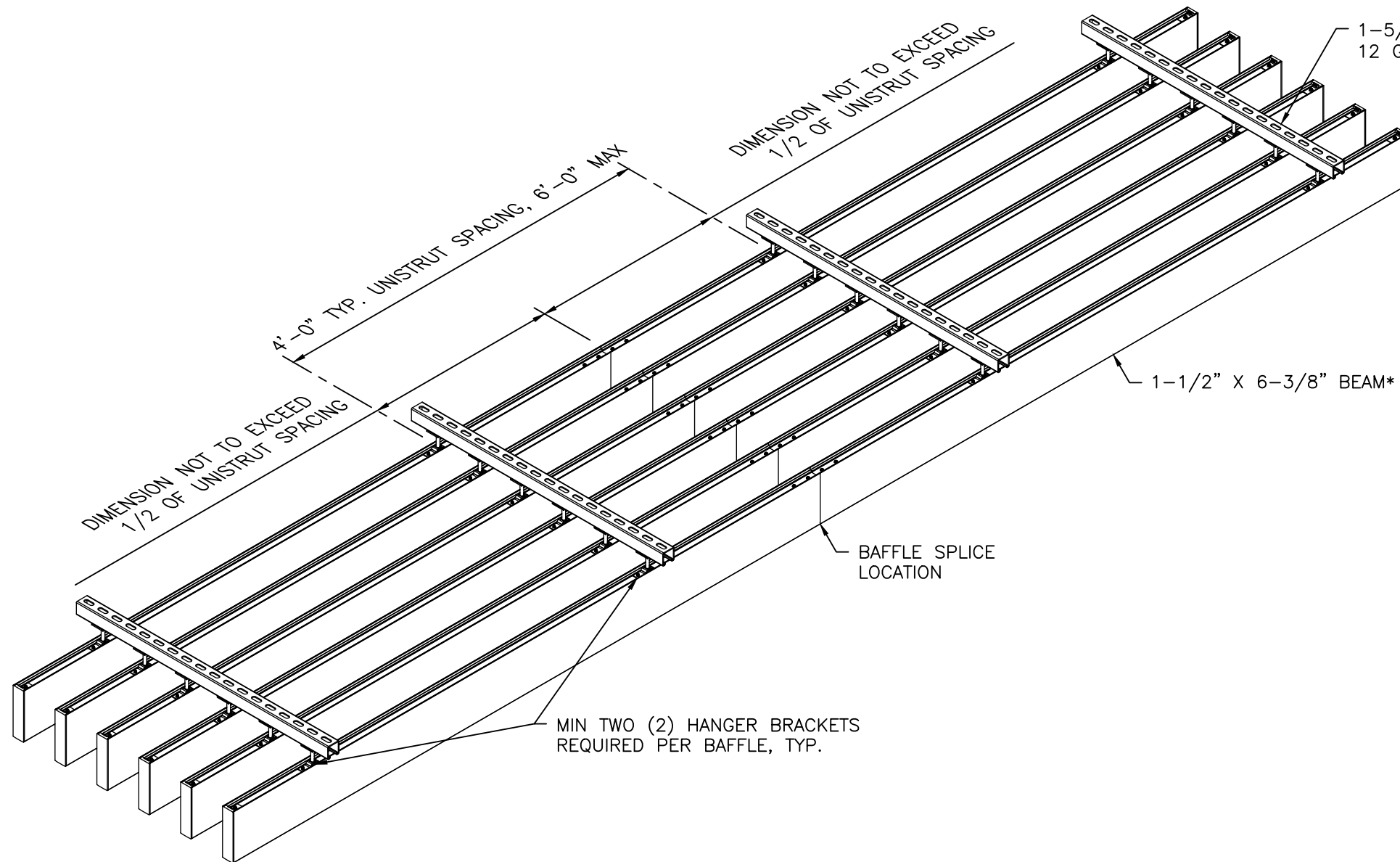
*1-1/2" X 6-3/8" BEAM PROFILE SHOWN, ALL PROFILES SIMILAR

AMERICAN PRODUCTS, INC. (API)
13909 LYNMAR BOULEVARD
TAMPA, FL 33626
CONTACT: KERRI BEALS
PH (813)925-0144
WWW.AMERICANPRODUCTS.COM



Customer: API IN-HOUSE	
Assembly: LINEAR CEILING (BEAM)	Date: 11/01/2018
Drawn By: JD	Date: ...
Revised By:	Scale: NTS
Sheet: 6 OF 9	

API Recommends that this note appear with storefront elevations and section view details in your blueprints.
Storefront and related materials provided by American Products, Inc. (API). No substitutions without written consent from store owner/Architect. API (813)925-0144



MIN TWO (2) HANGER BRACKETS REQUIRED PER BAFFLE, TYP.

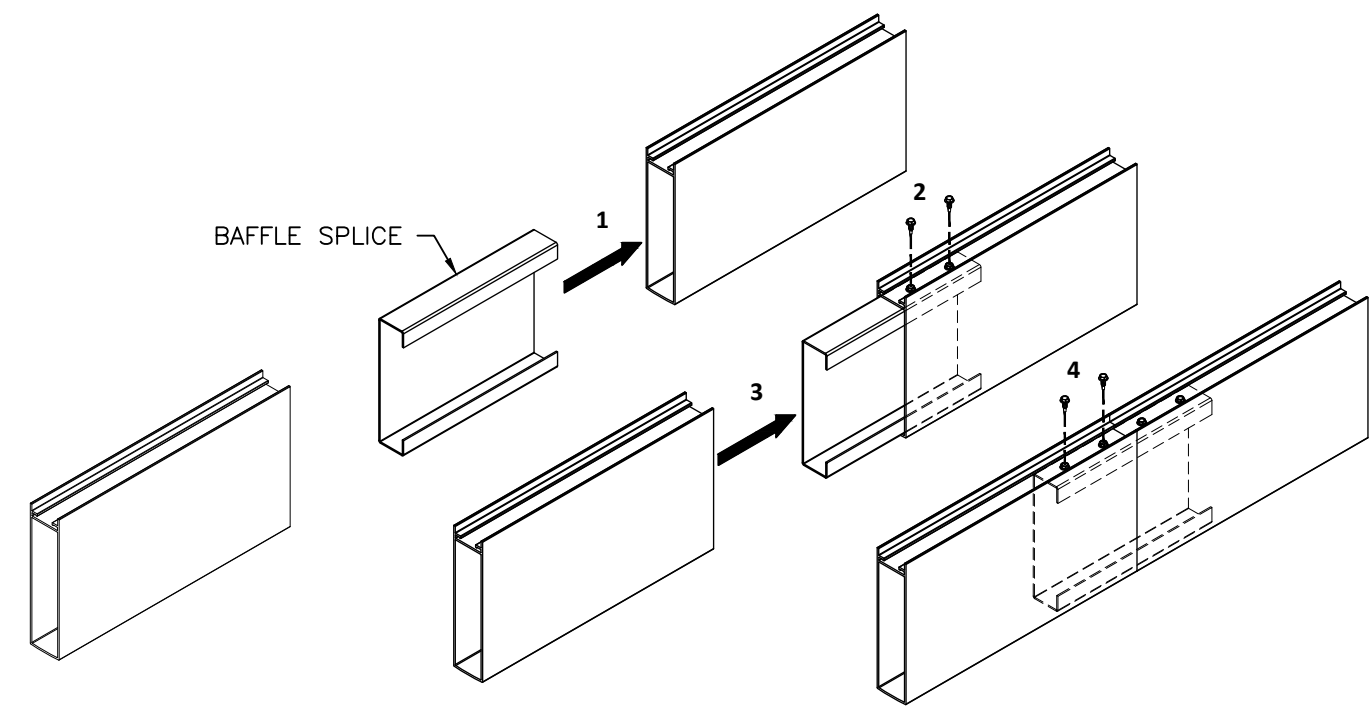
NOTE:
DUE TO BAFFLE SPLICE FASTENERS,
HANGER BRACKETS WILL NOT FIT AT
SPLICE LOCATIONS.

1-5/8" X 1-5/8" UNISTRUT P1000 -
12 GA. STEEL PRIMARY CHANNEL

1-1/2" X 6-3/8" BEAM*

BAFFLE SPLICE
LOCATION

1. INSERT BAFFLE SPLICE HALFWAY INTO BAFFLE.
2. SECURE WITH TWO (2) MIN #8 TEK SCREWS (BY OTHERS).
3. SLIDE SECOND BAFFLE OVER SPLICE AND TIGHT AGAINST FIRST BAFFLE. ENSURE FINISHED SEAM IS ALIGNED AND FLUSH ON ALL SIDES.
4. SECURE REMAINING SIDE WITH TWO (2) MIN #8 TEK SCREWS.



*1-1/2" X 6-3/8" BEAM PROFILE SHOWN, ALL PROFILES SIMILAR
**VERTICAL SUPPORT OMITTED FOR CLARITY

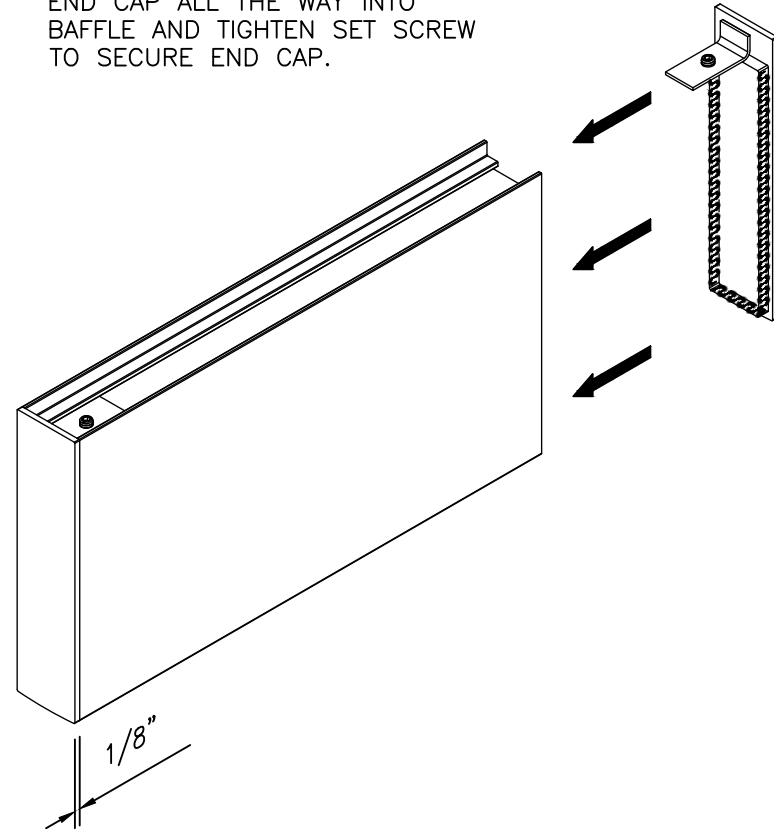
Customer: API IN-HOUSE	Date: 11/01/2018	Sheet: 7 OF 9
Assembly: LINEAR CEILING (BEAM)	Date: ...	
Drawn By: JD		
Revised By:		
Scale: NTS		

API Recommends that this note appear with storefront elevations and section view details in your blueprints.
Storefront and related materials provided by American Products, Inc. (API). No substitutions without written consent from store owner/Architect. API (813)925-0144

METAL END CAP

PAINTED, POWDER COATED, &
DECORATED WOOD FINISHES

1. APPLY CONSTRUCTION ADHESIVE ON 3 SIDES SHOWN.
2. INSERT END CAP INTO BAFFLE AND ENSURE END CAP BRACKET SLIDES INTO SUSPENSION SLOT AT TOP OF BAFFLE.
3. APPLY EVEN PRESSURE TO SET END CAP ALL THE WAY INTO BAFFLE AND TIGHTEN SET SCREW TO SECURE END CAP.



*1-1/2" X 6-3/8" BEAM PROFILE SHOWN, ALL PROFILES SIMILAR

AMERICAN PRODUCTS, INC. (API)
13909 LYNMAR BOULEVARD
TAMPA, FL 33626
CONTACT: KERRI BEALS
PH (813)925-0144
WWW.AMERICANPRODUCTS.COM



Customer: API IN-HOUSE

Assembly: LINEAR CEILING (BEAM)

Drawn By: JD

Revised By:

Scale: NTS

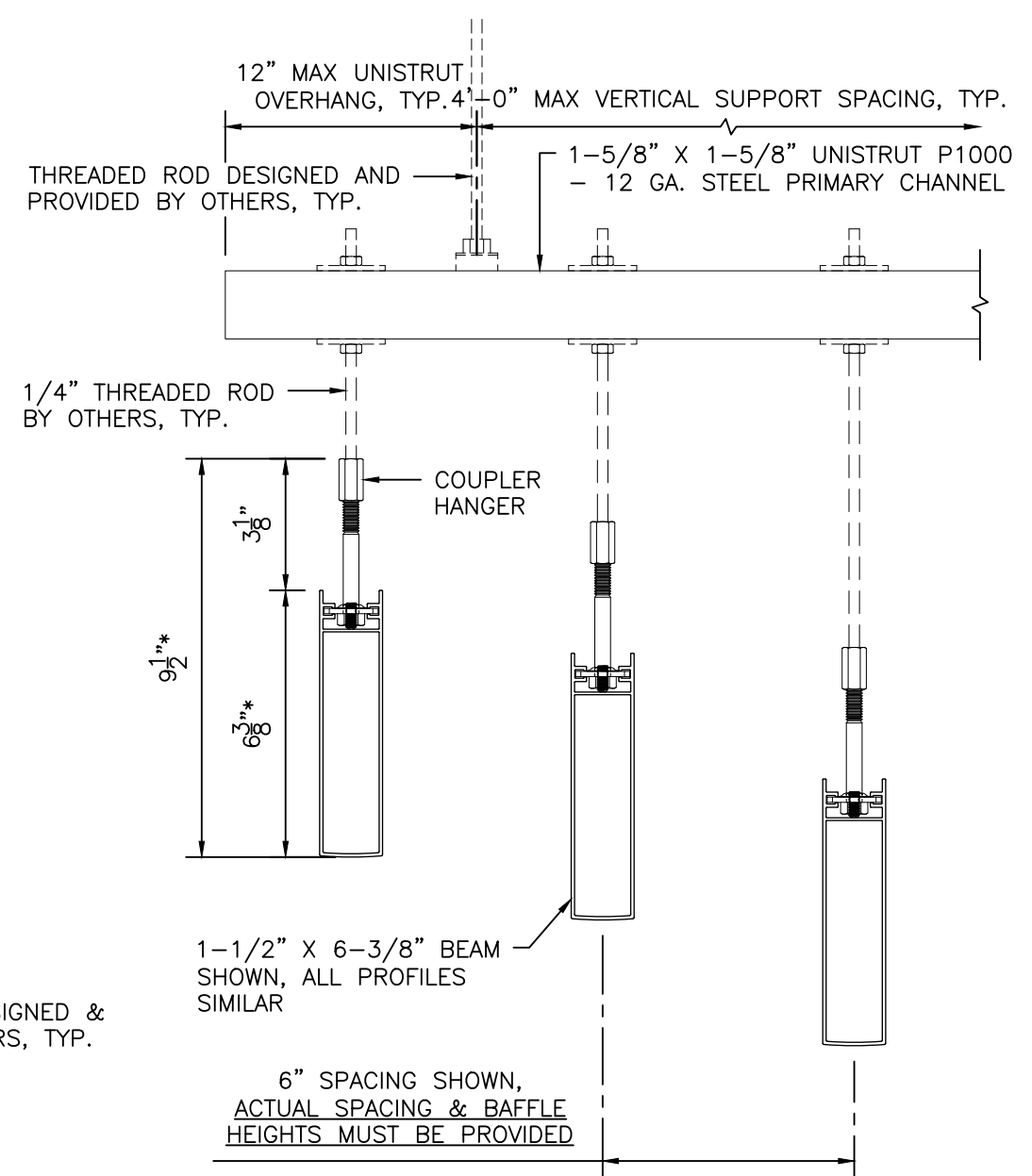
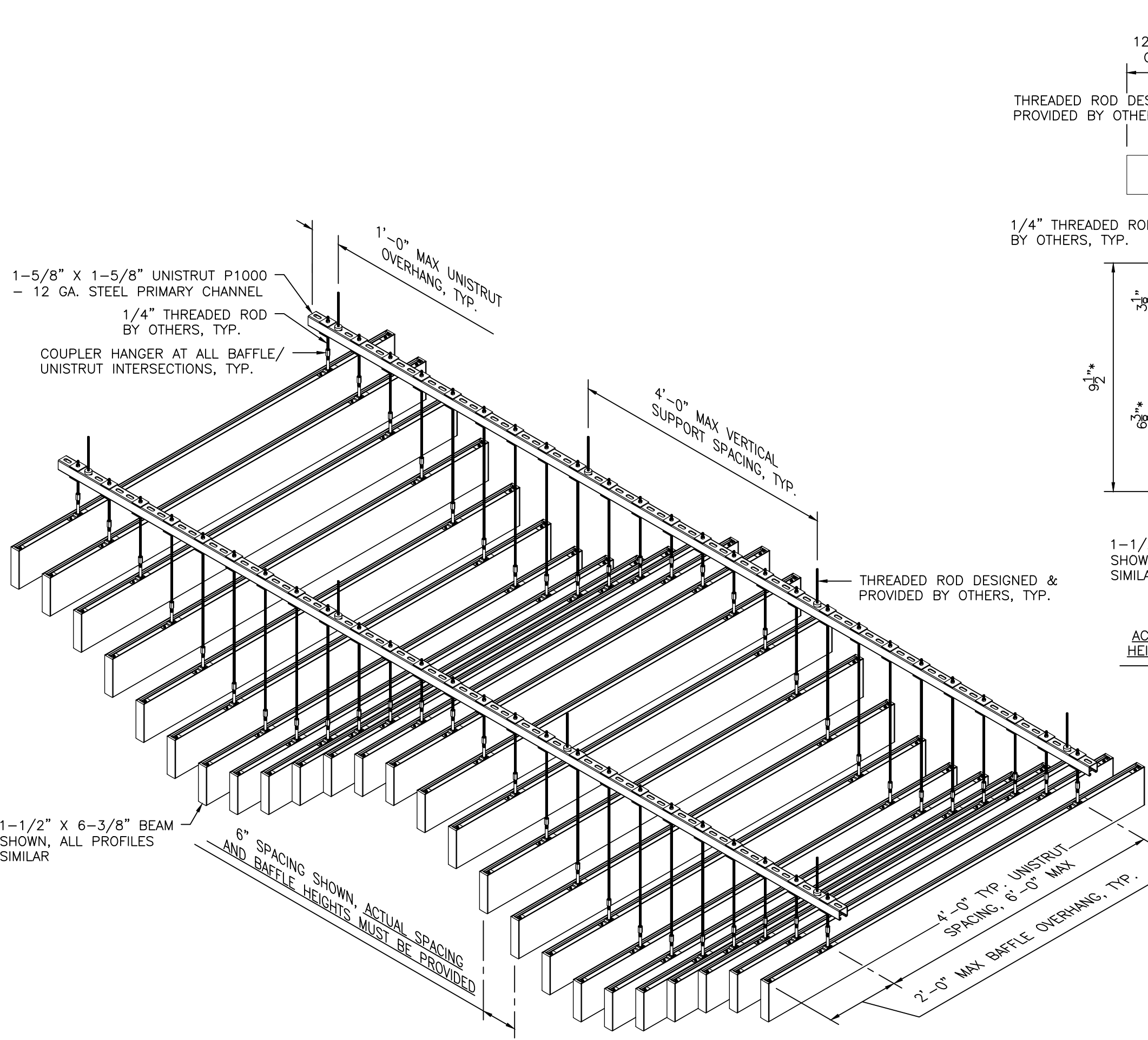
Date: 11/01/2018

Date:

Sheet: 8 OF 9

API Recommends that this note appear with storefront elevations and section view details in your blueprints.

Storefront and related materials provided by American Products, Inc. (API). No substitutions without written consent from store owner/Architect. API (813)925-0144



TYPICAL SECTION
NTS

NOTE:
ATTACHMENT TO STRUCTURE DESIGNED
AND PROVIDED BY OTHERS, NOT BY
API.

Customer: API IN-HOUSE	Date: 11/01/2018	Sheet: 9 OF 9
Assembly: LINEAR CEILING (BEAM)	Date: ...	
Drawn By: JD		
Revised By:		
Scale: NTS		

API Recommends that this note appear with storefront elevations and section view details in your blueprints.
Storefront and related materials provided by American Products, Inc. (API). No substitutions without written consent from store owner/Architect. API (813)925-0144