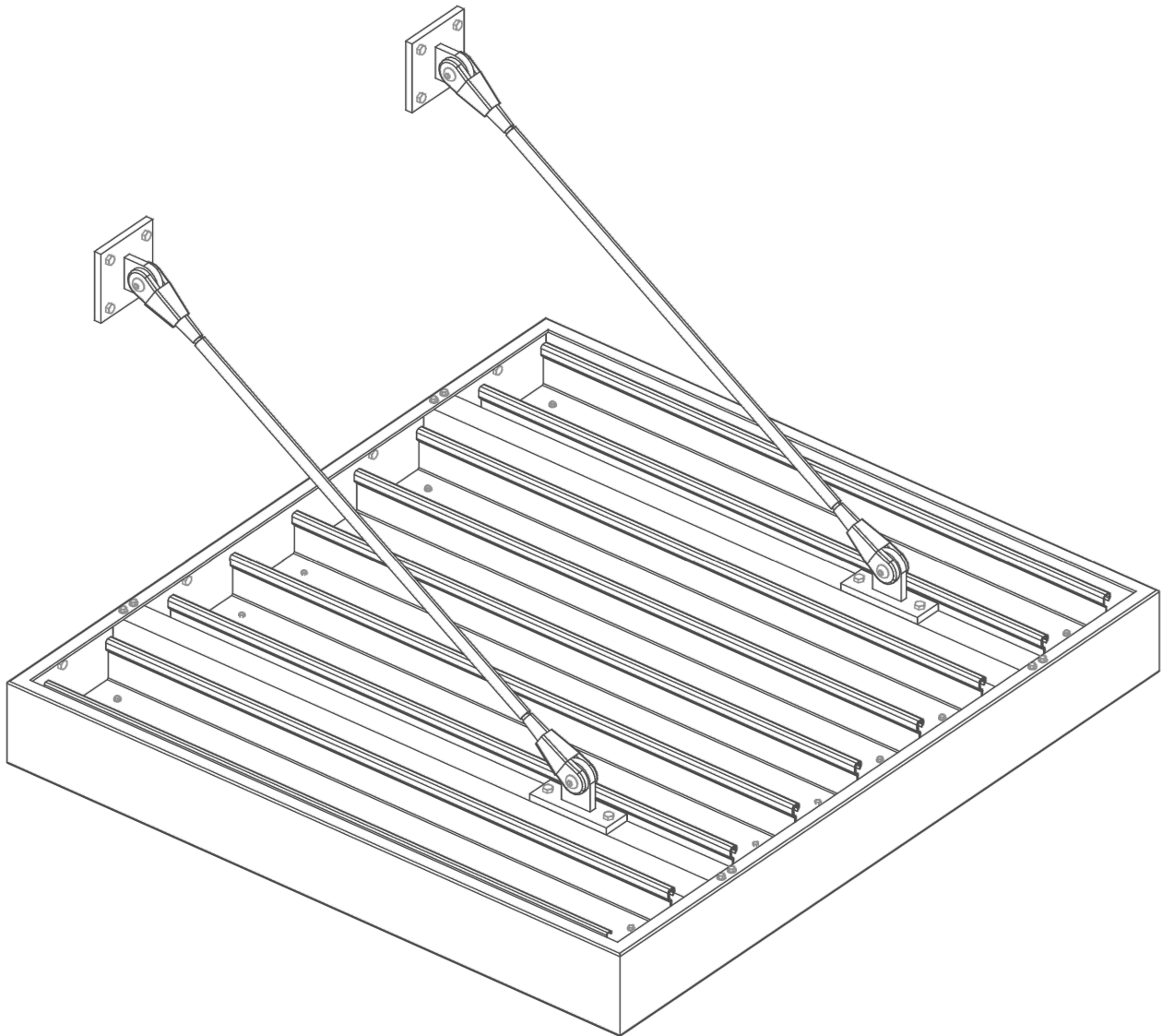


# TIE-BACK CANOPY

BY

AMERICAN PRODUCTS INCORPORATED (API)



API Recommends that this note appear with storefront elevations and section view details in your blueprints.

Storefront and related materials provided by American Products, Inc. (API). No substitutions without written consent from store owner/Architect. API (813) 925-0144

Customer: API IN-HOUSE

Assembly: TIE-BACK CANOPY

Drawn By: JD

Date: 08-03-15

Revision: JD

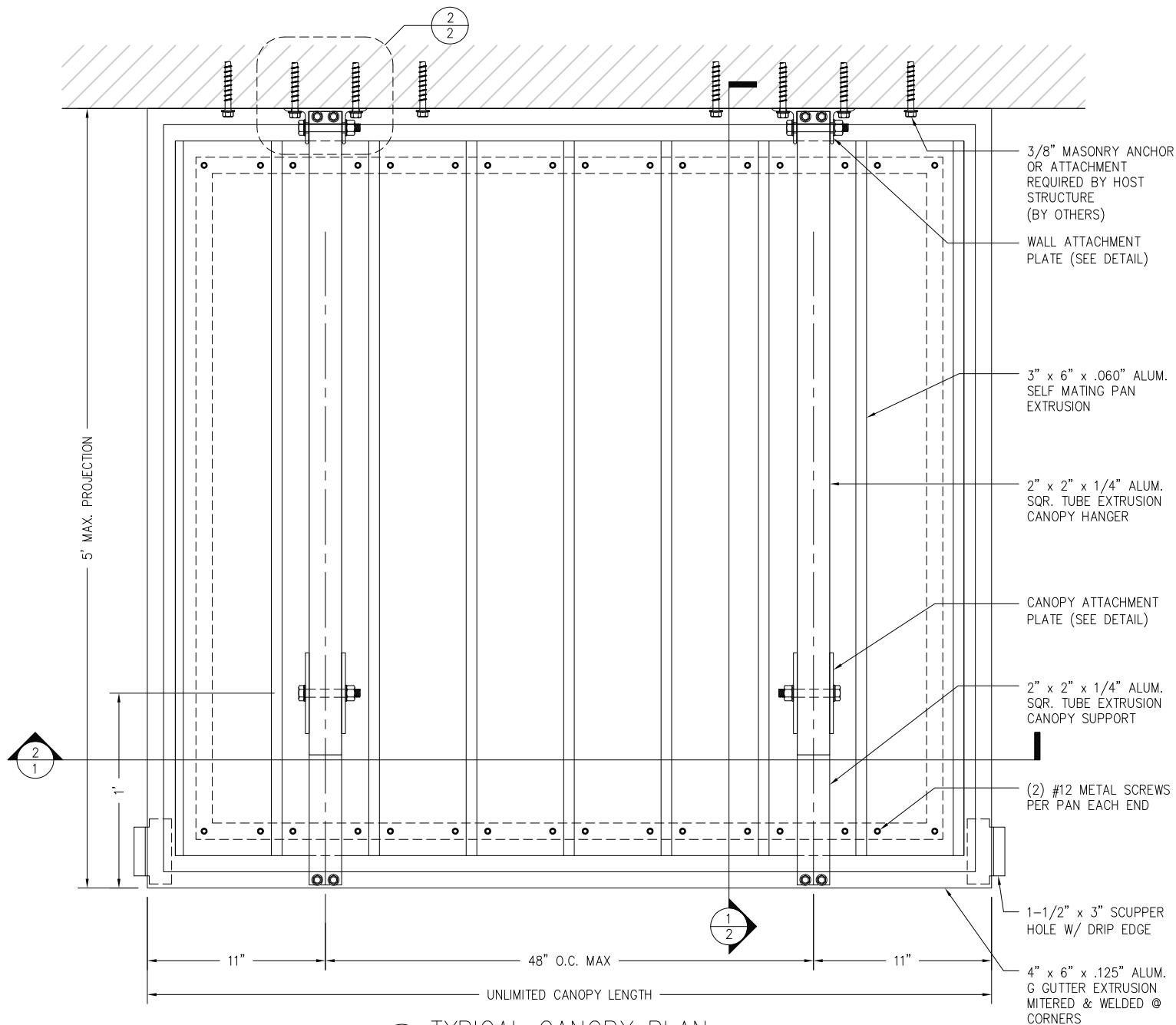
Date: 08-11-15

Scale: NTS

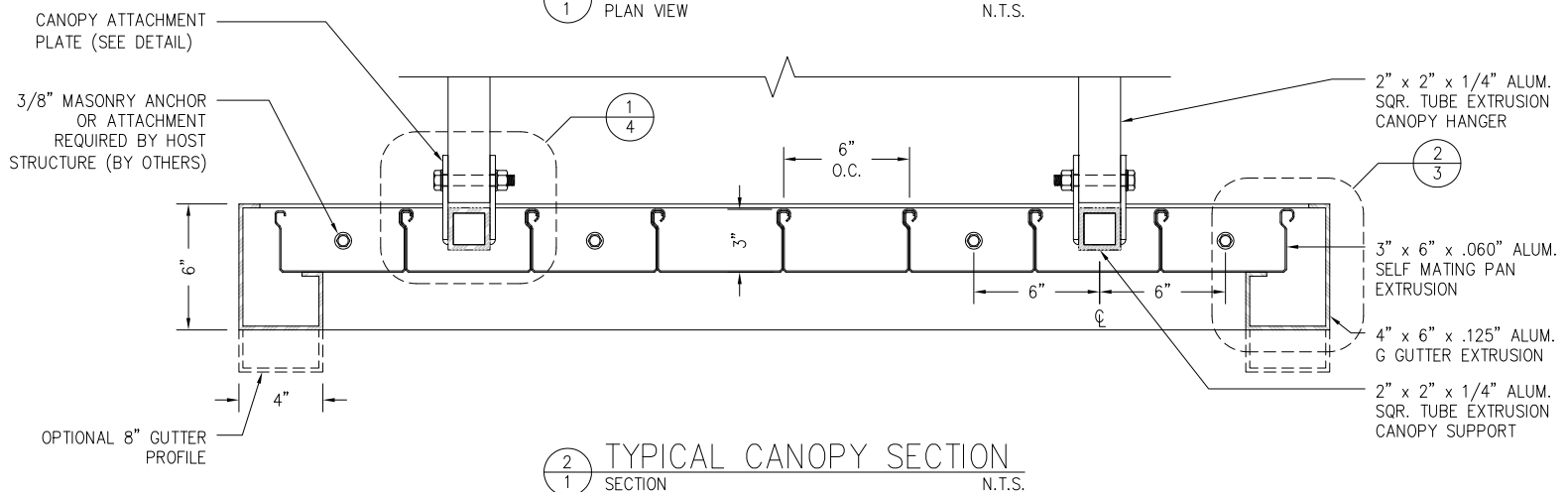
Sheet: COVER



AMERICAN PRODUCTS, INC. (API)  
12157 W. LINEBAUGH AVENUE #335  
TAMPA, FL 33626  
CONTACT: KERRI BEALS  
PH (813) 925-0144  
WWW.AMERICANPROD.COM



1 1 TYPICAL CANOPY PLAN N.T.S.



2 1 TYPICAL CANOPY SECTION N.T.S.

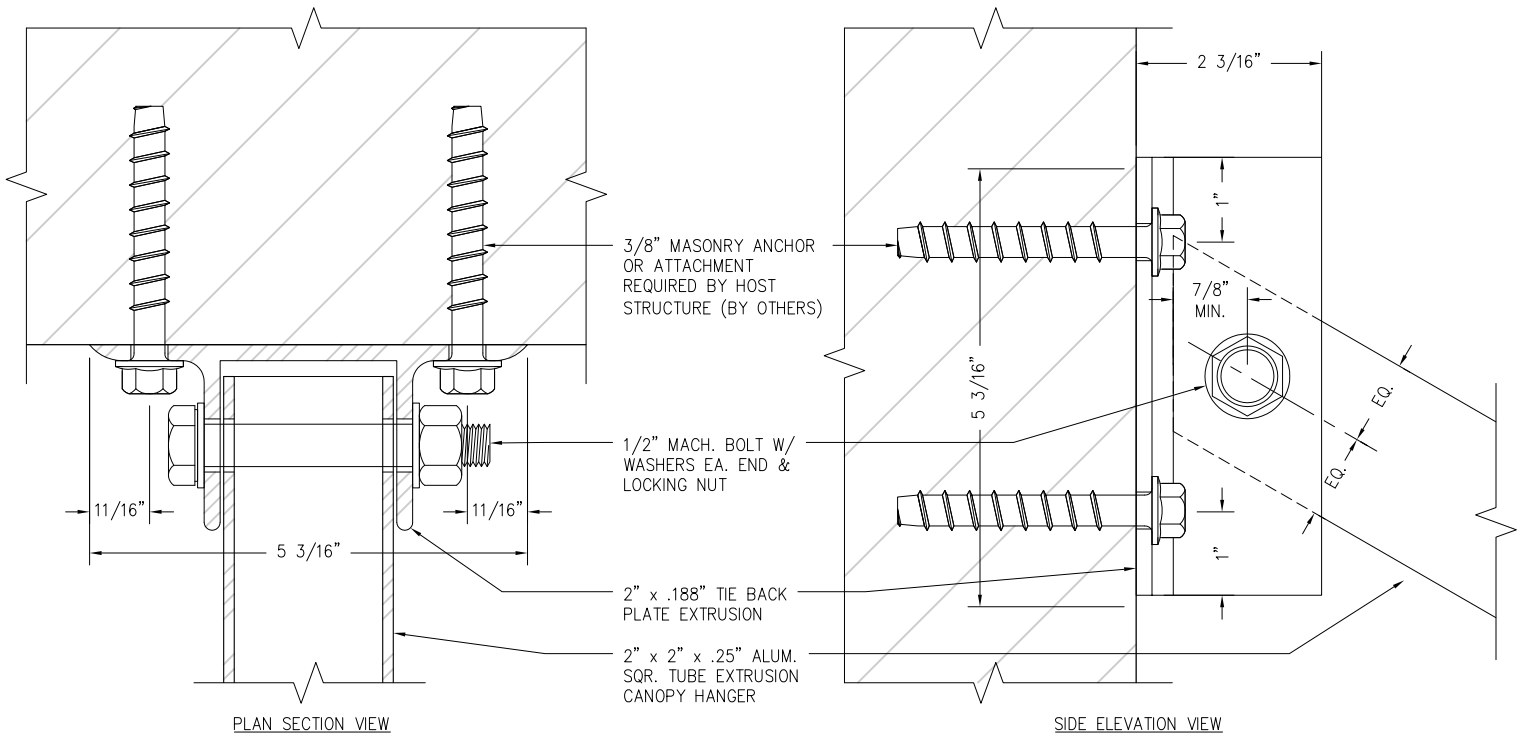
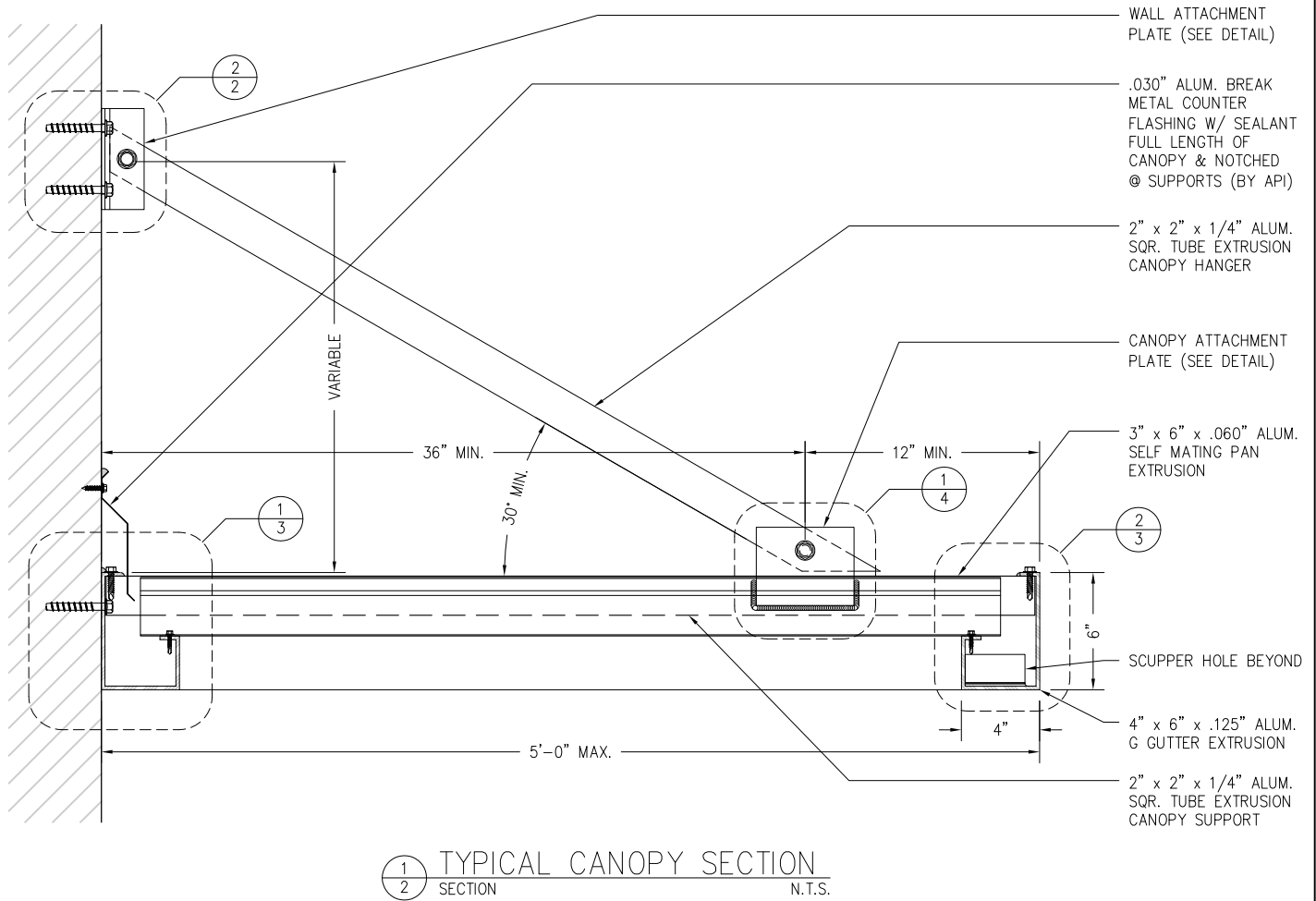
API Recommends that this note appear with storefront elevations and section view details in your blueprints.

Storefront and related materials provided by American Products, Inc. (API). No substitutions without written consent from store owner/Architect. API (813) 925-0144

Customer: API IN-HOUSE	
Assembly: TIE-BACK CANOPY	
Drawn By: JD	Date: 08-03-15
Revision: JD	Date: 08-11-15
Scale: NTS	Sheet:1



AMERICAN PRODUCTS, INC. (API)  
12157 W. LINEBAUGH AVENUE #335  
TAMPA, FL 33626  
CONTACT: KERRI BEALS  
PH (813) 925-0144  
WWW.AMERIANPROD.COM



API Recommends that this note appear with storefront elevations and section view details in your blueprints.

Storefront and related materials provided by American Products, Inc. (API). No substitutions without written consent from store owner/Architect. API (813) 925-0144

Customer: API IN-HOUSE

Assembly: TIE-BACK CANOPY

Drawn By: JD

Date: 08-03-15

Revision: JD

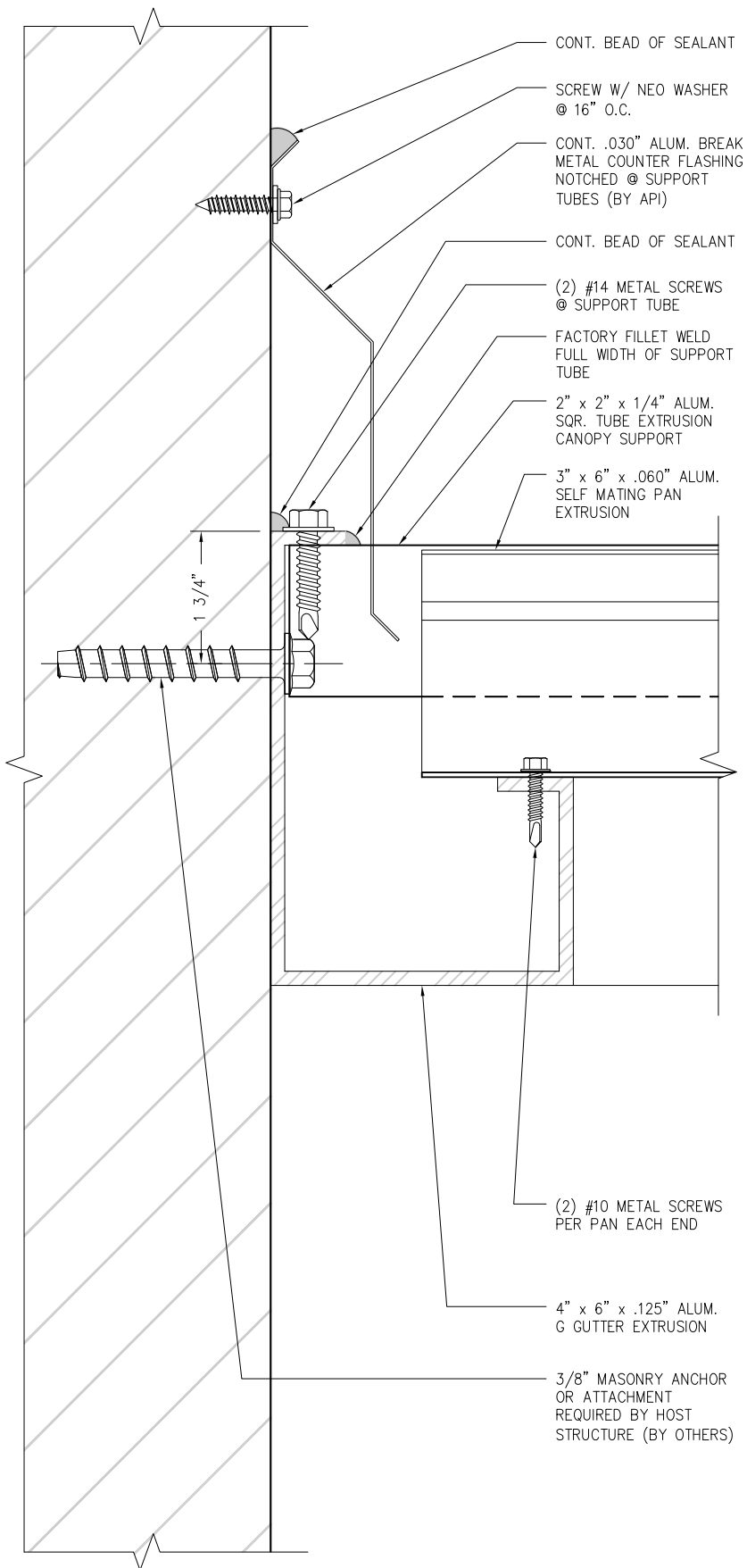
Date: 08-11-15

Scale: NTS

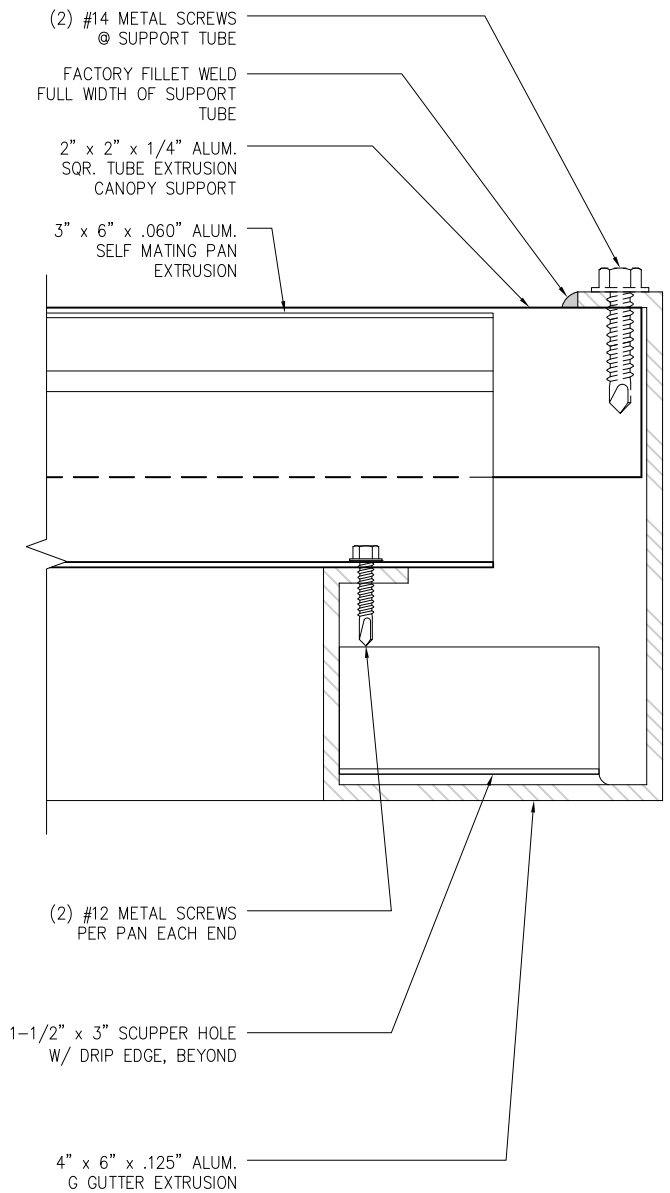
Sheet: 2



AMERICAN PRODUCTS, INC. (API)  
12157 W. LINEBAUGH AVENUE #335  
TAMPA, FL 33626  
CONTACT: KERRI BEALS  
PH (813) 925-0144  
WWW.AMERIANPROD.COM



1 WALL ATTACHMENT @ GUTTER DETAIL  
3 SECTION N.T.S.



2 GUTTER DETAIL  
3 SECTION N.T.S.

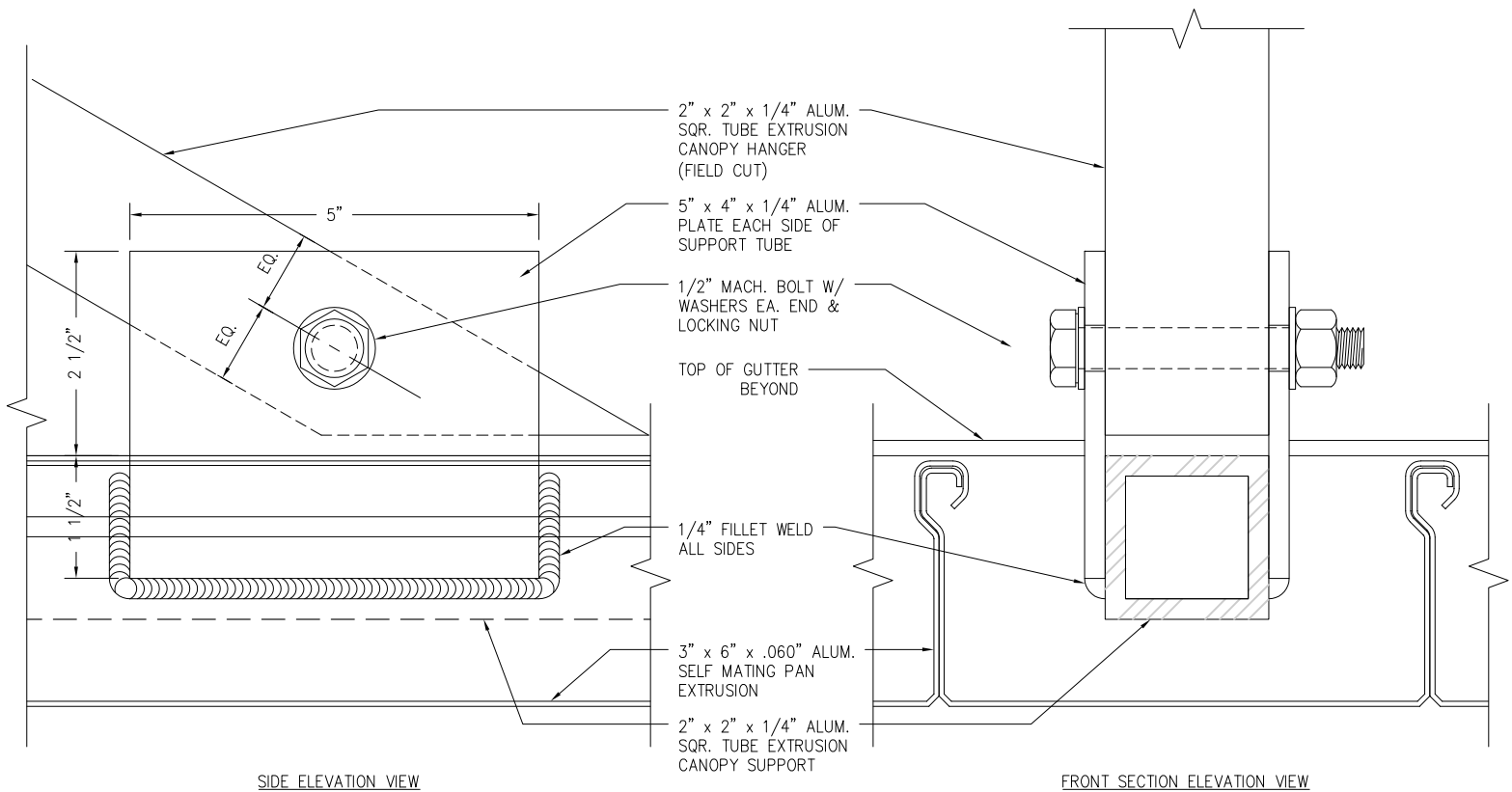
API Recommends that this note appear with storefront elevations and section view details in your blueprints.

Storefront and related materials provided by American Products, Inc. (API). No substitutions without written consent from store owner/Architect. API (813) 925-0144

Customer: API IN-HOUSE	
Assembly: TIE-BACK CANOPY	
Drawn By: JD	Date: 08-03-15
Revision: JD	Date: 08-11-15
Scale: NTS	Sheet: 3



AMERICAN PRODUCTS, INC. (API)  
12157 W. LINEBAUGH AVENUE #335  
TAMPA, FL 33626  
CONTACT: KERRI BEALS  
PH (813) 925-0144  
WWW.AMERIANPROD.COM



1  
4

# HANGER ATTACHMENT @ CANOPY DETAIL

ELEVATION & SECTION

N.T.S.

NOT USED

NOT USED

API Recommends that this note appear with storefront elevations and section view details in your blueprints.

Storefront and related materials provided by American Products, Inc. (API). No substitutions without written consent from store owner/Architect. API (813) 925-0144

Customer: API IN-HOUSE

Assembly: TIE-BACK CANOPY

Drawn By: JD

Date: 08-03-15

Revision: JD

Date: 08-11-15

Scale: NTS

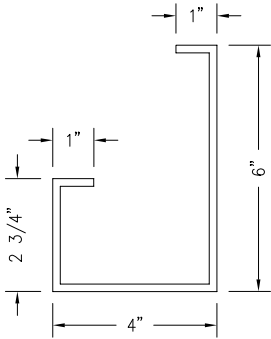
Sheet: 4



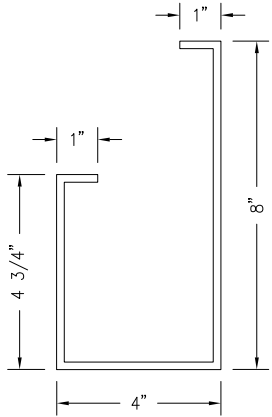
AMERICAN PRODUCTS, INC. (API)  
12157 W. LINEBAUGH AVENUE #335  
TAMPA, FL 33626  
CONTACT: KERRI BEALS  
PH (813) 925-0144  
WWW.AMERICANPROD.COM

# STANDARD PARTS

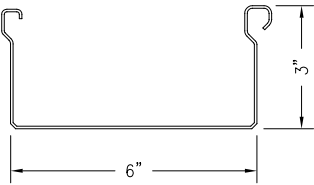
4" x 6" x .125" ALUM G GUTTER EXTRUSION  
PART #



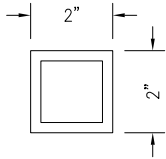
4" x 8" x .125" ALUM G GUTTER EXTRUSION  
PART #



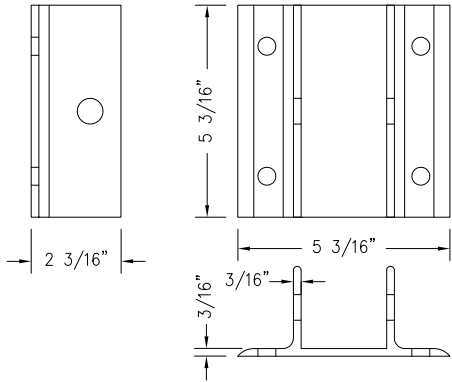
3" x 6" x .060" ALUM. SELF MATING PAN EXTRUSION  
PART #



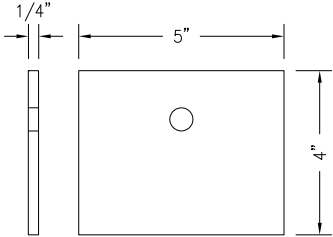
2" x 2" x .25" ALUM. SQR. TUBE EXTRUSION  
PART #



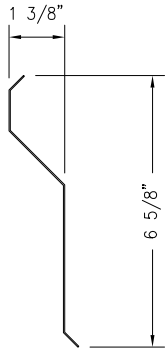
STANDARD WALL MOUNTING PLATE  
PART #



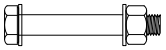
HANGER ATTACHMENT PLATE  
PART #



FLASHING  
PART #



ATTACHMENT BOLTS  
PART #



1/2"Ø x 3-1/2" SS MACHINE BOLT  
W/ (2) WASHERS & LOCKING NUT  
PART #

API Recommends that this note appear with storefront elevations and section view details in your blueprints.

Storefront and related materials provided by American Products, Inc. (API). No substitutions without written consent from store owner/Architect. API (813) 925-0144

Customer: API IN-HOUSE	
Assembly: TIE-BACK CANOPY	
Drawn By: JD	Date: 08-03-15
Revision: JD	Date: 08-11-15
Scale: NTS	Sheet:P1



AMERICAN PRODUCTS, INC. (API)  
12157 W. LINEBAUGH AVENUE #335  
TAMPA, FL 33626  
CONTACT: KERRI BEALS  
PH (813) 925-0144  
WWW.AMERIANPROD.COM

STANDARD PARTS

METAL SCREWS  
PART #

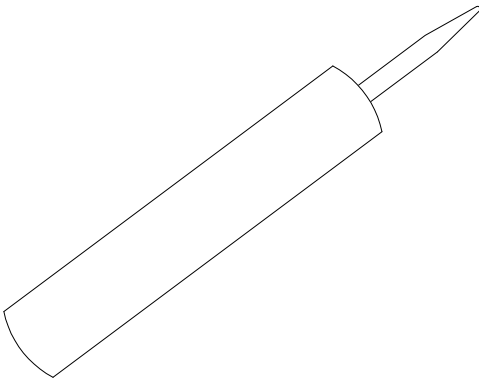


#12 x 1" SS DRILL POINT  
PART #

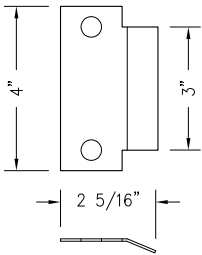


#14 x 1" SS DRILL POINT  
PART #

SEALANT – 10.5 OZ TUBE  
PART #



SCUPPER HOLE DRIP EDGE  
PART #



NOT USED

NOT USED

NOT USED

NOT USED

NOT USED

API Recommends that this note appear with storefront elevations and section view details in your blueprints.

Storefront and related materials provided by American Products, Inc. (API). No substitutions without written consent from store owner/Architect. API (813) 925-0144

Customer: API IN-HOUSE	
Assembly: TIE-BACK CANOPY	
Drawn By: JD	Date: 08-03-15
Revision: JD	Date: 08-11-15
Scale: NTS	Sheet: OP1



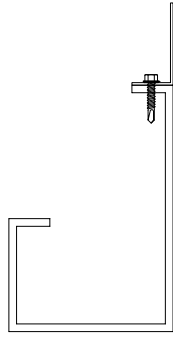
AMERICAN PRODUCTS, INC. (API)  
12157 W. LINEBAUGH AVENUE #335  
TAMPA, FL 33626  
CONTACT: KERRI BEALS  
PH (813) 925-0144  
WWW.AMERICANPROD.COM

# OPTIONAL PARTS

## FASCIA EXTENSION ANGLE

### AVAILABLE EXTRUSIONS

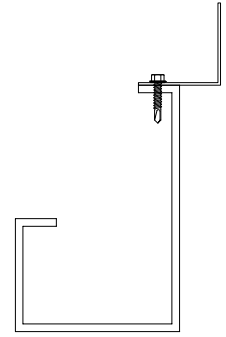
1" x 1" x 1/16" (PART #)  
 1" x 2" x 1/16" (PART #)  
 1" x 3" x 1/8" (PART #)  
 1-1/2" x 1-1/2" x 1/16" (PART #)  
 1-1/4" x 3-1/2" x 1/8" (PART#)  
 2" x 4" x 1/8" (PART #)  
 2" x 5" x 1/8" (PART #)



## FASCIA EXTENSION ANGLE

### AVAILABLE EXTRUSIONS

1" x 1-1/2" x 1/16" (PART #)  
 1-1/2" x 1-1/2" x 1/16" (PART #)  
 1" x 2" x 1/16" (PART #)  
 1" x 3" x 1/8" (PART #)  
 1-1/4" x 3-1/2" x 1/8" (PART#)  
 2" x 2" x 1/16" (PART #)  
 2" x 4" x 1/8" (PART #)  
 2" x 5" x 1/8" (PART #)  
 3" x 3" x 1/8" (PART #)



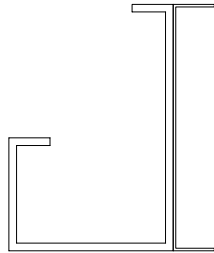
## FASCIA EXTENSION CHANNEL

### AVAILABLE EXTRUSIONS

2-1/2" x 6" x .290"/.170" (PART #)

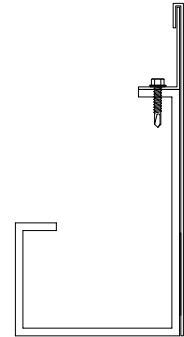
### AVAILABLE BREAK METAL

1-1/2" x 6" x 1/16" (PART #)  
 1-1/2" x 8" x 1/16" (PART #)



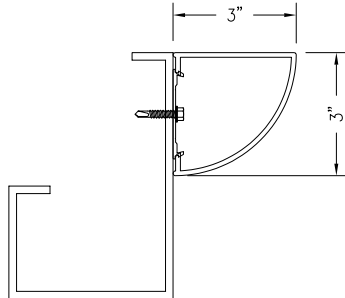
## FASCIA CLADDING

AVAILABLE IN MANY FINISHES  
 AND COLORS



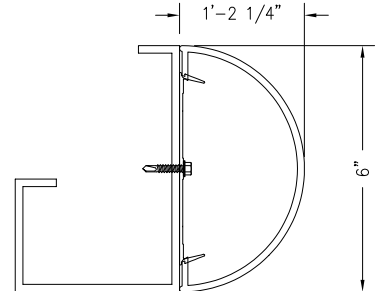
## FASCIA TRIM PACKAGE F1

3" METAL QUARTER ROUND PART #



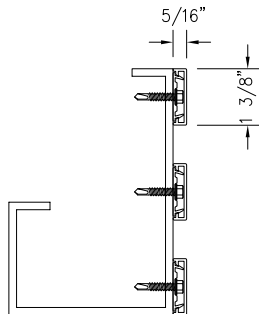
## FASCIA TRIM PACKAGE F2

METAL HALF ROUND PART #



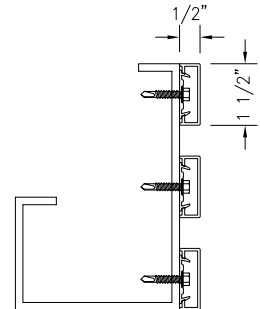
## FASCIA TRIM PACKAGE F3

(3) METAL STRIPS PART #



## FASCIA TRIM PACKAGE F4

(3) METAL STRIPS PART #



API Recommends that this note appear with storefront elevations and section view details in your blueprints.

Storefront and related materials provided by American Products, Inc. (API). No substitutions without written consent from store owner/Architect. API (813) 925-0144

Customer: API IN-HOUSE

Assembly: TIE-BACK CANOPY

Drawn By: JD

Date: 08-03-15

Revision: JD

Date: 08-11-15

Scale: NTS

Sheet: OP1



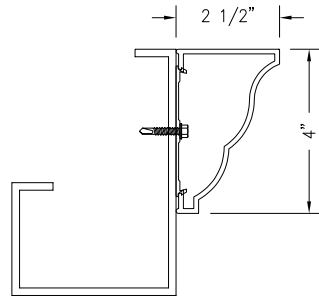
AMERICAN PRODUCTS, INC. (API)  
 12157 W. LINEBAUGH AVENUE #335  
 TAMPA, FL 33626  
 CONTACT: KERRI BEALS  
 PH (813) 925-0144  
 WWW.AMERIANPROD.COM



# OPTIONAL PARTS

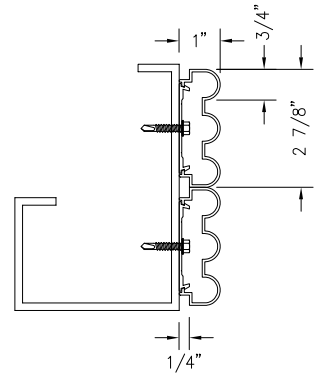
## FASCIA TRIM PACKAGE F5

4" METAL CORNICE PART #



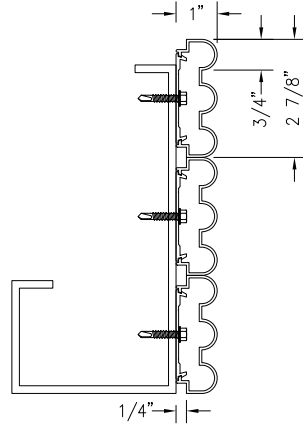
## FASCIA TRIM PACKAGE F6

(2) METAL BEADED STRIPS PART #



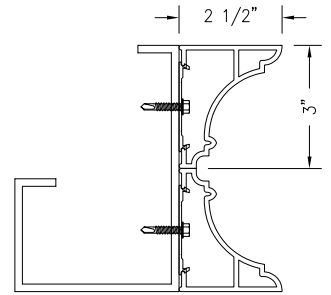
## FASCIA TRIM PACKAGE F7

(3) METAL BEADED STRIPS PART #



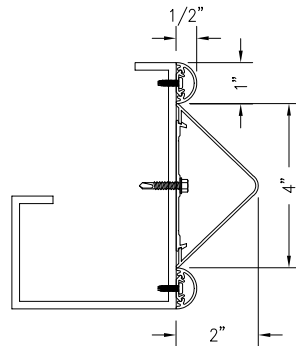
## FASCIA TRIM PACKAGE F8

(2) 3" METAL CORNICE PIECES PART #



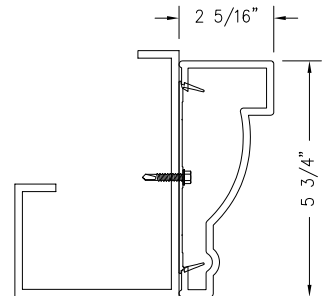
## FASCIA TRIM PACKAGE F9

4" METAL TRIANGLE W/  
(2) 1" METAL HALF ROUNDS PART #

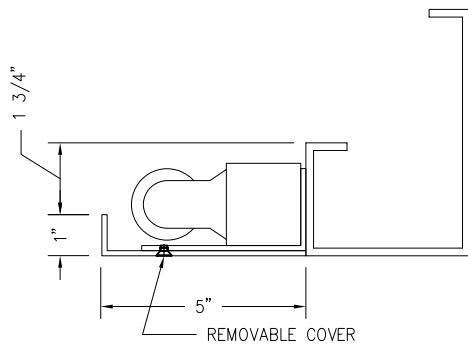


## FASCIA TRIM PACKAGE F10

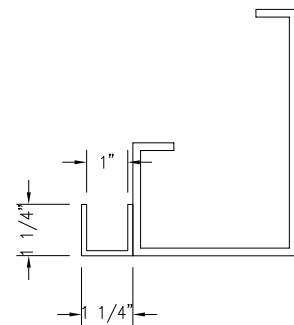
5-3/4" METAL CORNICE PART #



## LIGHT VALANCE LV1 (1-4 SIDES) PART #



## LIGHT VALANCE LV2 (1-4 SIDES) PART #



API Recommends that this note appear with storefront elevations and section view details in your blueprints.

Storefront and related materials provided by American Products, Inc. (API). No substitutions without written consent from store owner/Architect. API (813) 925-0144

Customer: API IN-HOUSE

Assembly: TIE-BACK CANOPY

Drawn By: JD

Date: 08-03-15

Revision: JD

Date: 08-11-15

Scale: NTS

Sheet: OP2



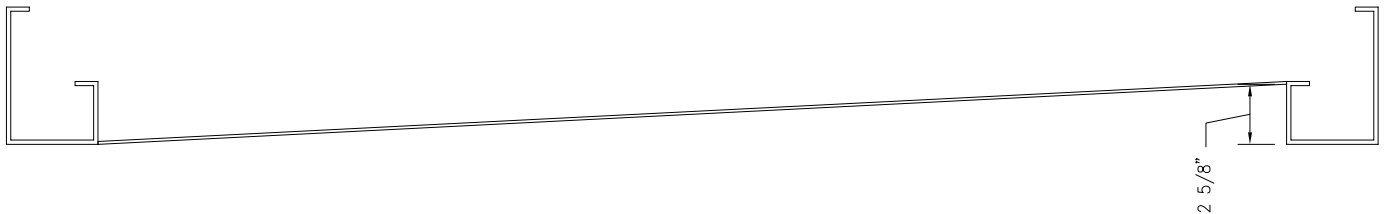
AMERICAN PRODUCTS, INC. (API)  
12157 W. LINEBAUGH AVENUE #335  
TAMPA, FL 33626  
CONTACT: KERRI BEALS  
PH (813) 925-0144  
WWW.AMERIANPROD.COM

# OPTIONAL PARTS

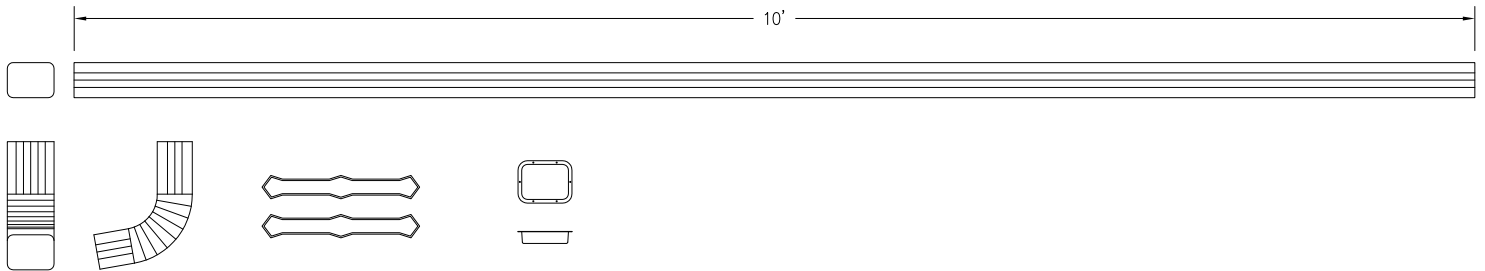
METAL BOTTOM DECK PART #



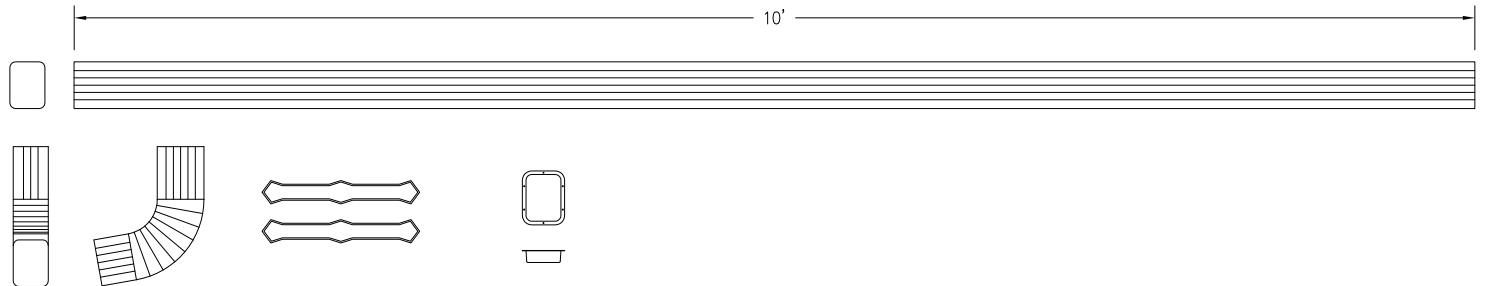
SLOPED METAL BOTTOM DECK (FOR USE W/ LIGHTING VALANCE OPTION) PART #



METAL DOWNSPOUT KIT TYPE A – (1) 3" x 4" LEADER, (1) GUTTER OUTLET, (1) ELBOW, (2) STRAPS PART #



METAL DOWNSPOUT KIT TYPE B – (1) 3" x 4" LEADER, (1) GUTTER OUTLET, (1) ELBOW, (2) STRAPS PART #



API Recommends that this note appear with storefront elevations and section view details in your blueprints.

---

Storefront and related materials provided by American Products, Inc. (API). No substitutions without written consent from store owner/Architect. API (813) 925-0144

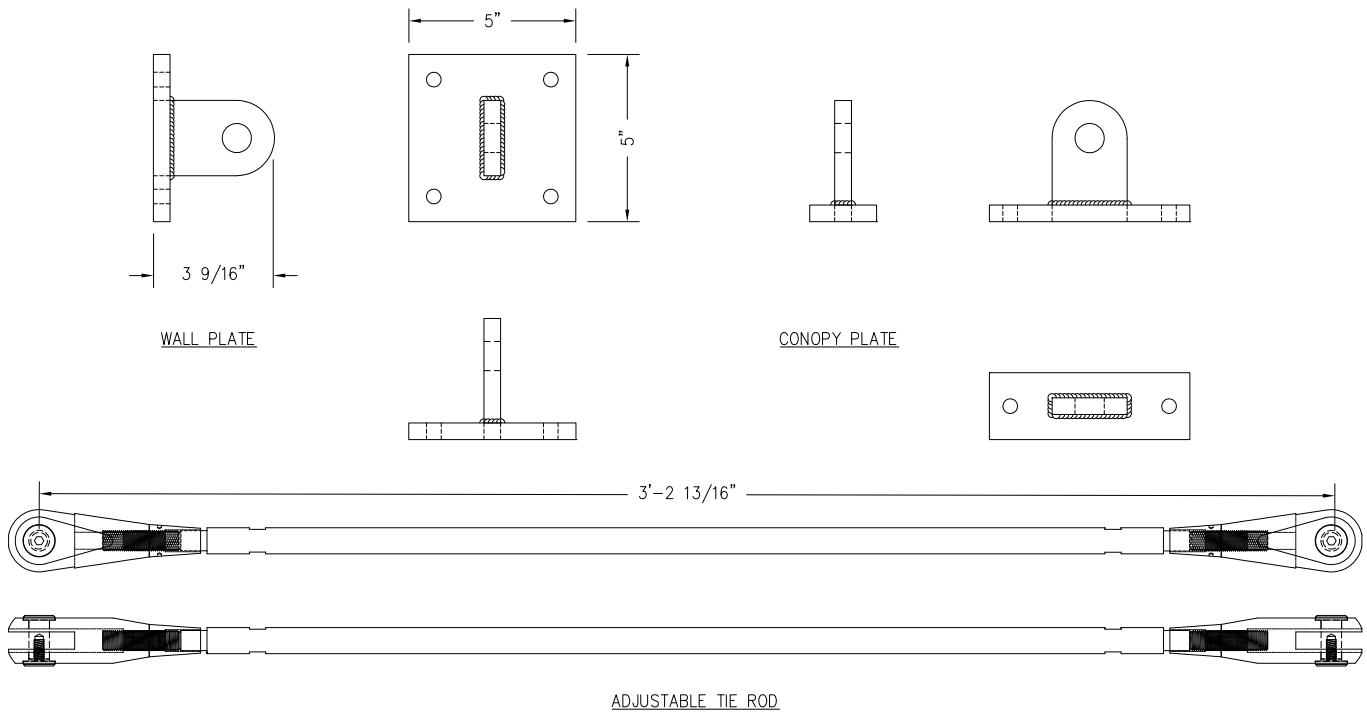
Customer: API IN-HOUSE	
Assembly: TIE-BACK CANOPY	
Drawn By: JD	Date: 08-03-15
Revision: JD	Date: 08-11-15
Scale: NTS	Sheet: OP3



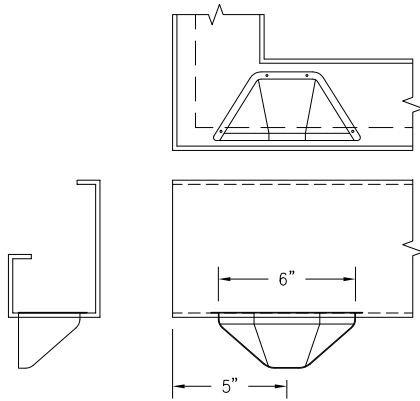
AMERICAN PRODUCTS, INC. (API)  
12157 W. LINEBAUGH AVENUE #335  
TAMPA, FL 33626  
CONTACT: KERRI BEALS  
PH (813) 925-0144  
WWW.AMERICANPROD.COM

# OPTIONAL PARTS

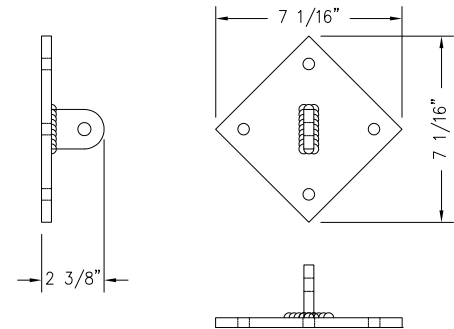
ADJUSTABLE TIE-BACK ROD KIT – (2) TIE RODS, (2) WALL PLATES & (2) CANOPY PLATES (PART #)



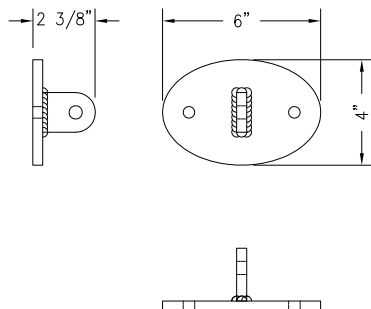
GUTTER SCUPPER PART #



DIAMOND WALL PLATE (PART #)  
(FOR USE W/ ADJUSTABLE TIE ROD KIT)



OVAL WALL PLATE (PART #)  
(FOR USE W/ ADJUSTABLE TIE ROD KIT)



NOT USED

API Recommends that this note appear with storefront elevations and section view details in your blueprints.

Storefront and related materials provided by American Products, Inc. (API). No substitutions without written consent from store owner/Architect. API (813) 925-0144

Customer: API IN-HOUSE

Assembly: TIE-BACK CANOPY

Drawn By: JD

Date: 08-03-15

Revision: JD

Date: 08-11-15

Scale: NTS

Sheet: OP4



AMERICAN PRODUCTS, INC. (API)  
12157 W. LINEBAUGH AVENUE #335  
TAMPA, FL 33626  
CONTACT: KERRI BEALS  
PH (813) 925-0144  
WWW.AMERIANPROD.COM