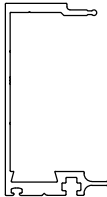

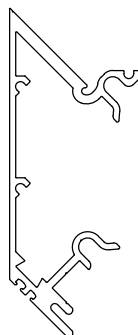
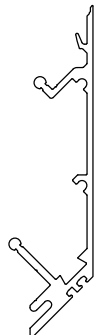
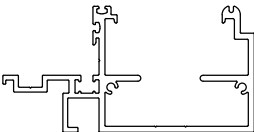
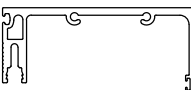
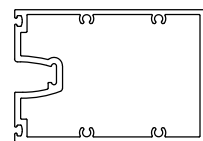
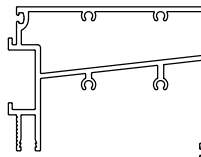
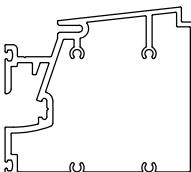
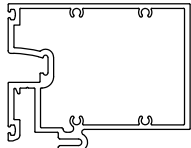
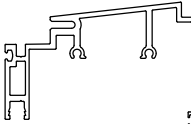

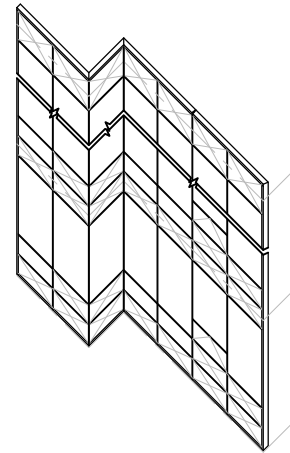
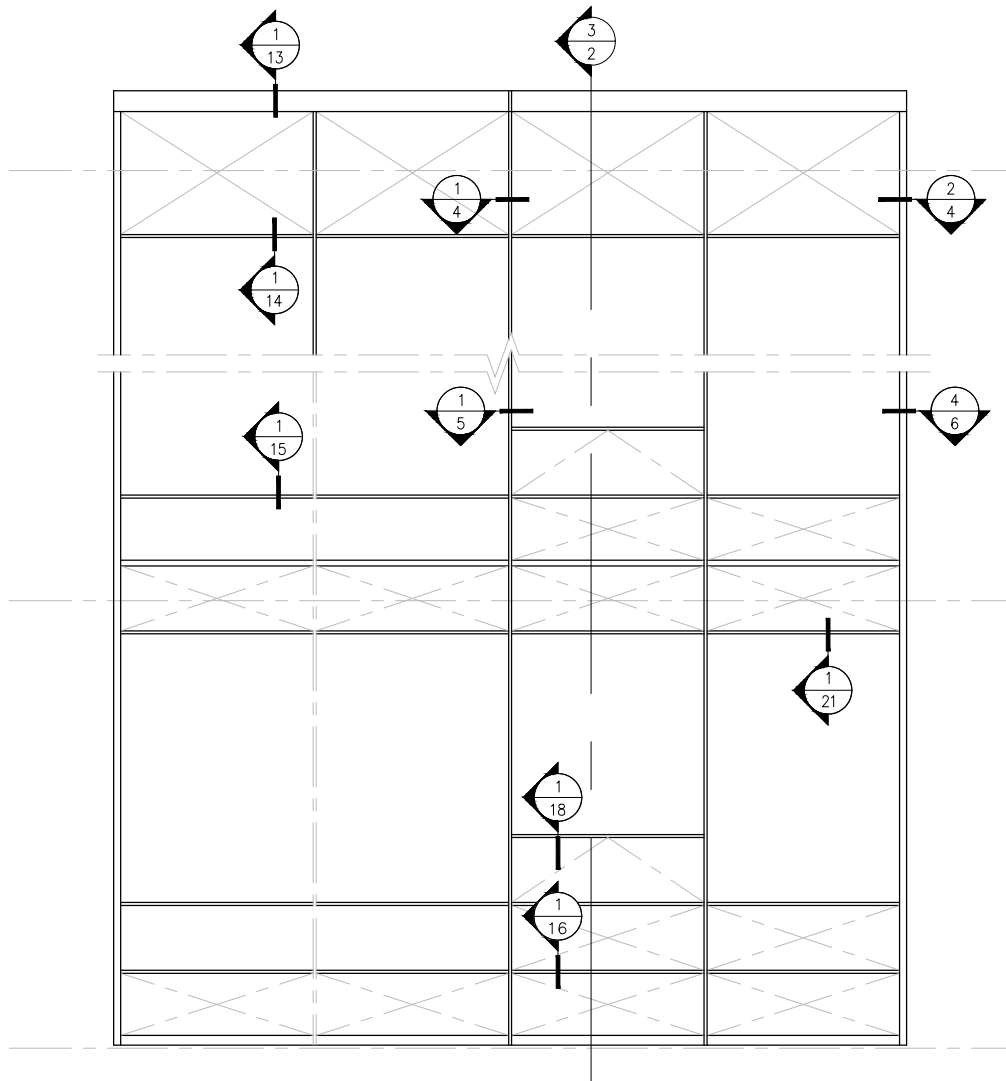


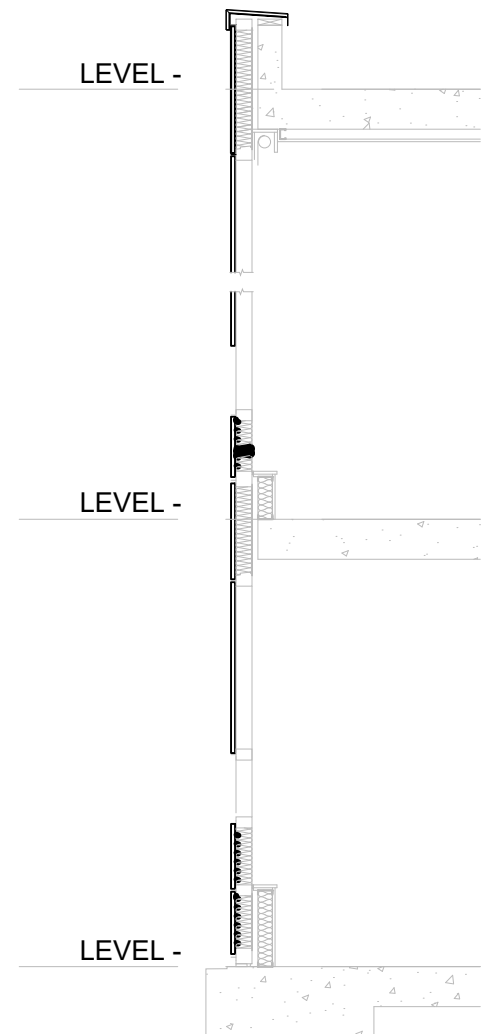
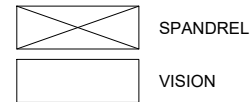
AMERICAN PRODUCTS,INC (API)								
CW625								
LIST OF PARTS								
PART #	DESCRIPTION							
CW625	2 3/4" MALE							
CW625	2 3/4" FEMALE							
CW625	OUTSIDE 90° FEMALE CORNER							
CW625	OUTSIDE 90° MALE CORNER		TYP. 2 3/4" MALE		TYP. 2 3/4" FEMALE		OUTSIDE 90° FEMALE CORNER	
CW625	3-7/8" MALE HARD STACK							
CW625	3-7/8" FEMALE STACK JOINT SILL							
CW625	2-3/4" HORIZONTAL							
CW625	5-5/16" FEMALE STACK							
CW625	2-3/4" SLOPED HORIZONTAL							
CW625	2-3/4" HORIZONTAL							
CW625	3-7/8" FEMALE STACK SILL							
CW625	2-9/16" HARD STACK SILL STARTER							
AVAILABLE FINISHES								
FINISH API / US	DESCRIPTION		3-7/8" MALE HARD STACK		3-7/8" FEMALE STACK JOINT SILL		TYP. 2 3/4" HORIZONTAL	
-	-	CLEAR						
-	-	BRONZE						
-	-	2 COAT KYNAR						
-	-	POWDER COAT						
CUSTOM POWDER COAT								
CUSTOM COLORS UPON REQUEST.								
BASIC ORDERING INFORMATION:								
(PART #)-(FINISH CODE)								
EXAMPLE : F20075-1101								
GLASS CALCULATIONS: DLO +3/4"			2-3/4" SLOPED HORIZONTAL		2-3/4" HORIZONTAL		3-7/8" FEMALE STACK SILL	
							2-9/16" HARD STACK SILL STARTER	
API RECOMMENDS THAT THIS NOTE APPEAR WITH STOREFRONT ELEVATIONS AND SECTION VIEW DETAILS IN YOUR DRAWINGS			Customer: API IN-HOUSE				 AMERICAN PRODUCTS, INC. (API) 13909 LYNMAR BOULEVARD TAMPA, FL. 33626 PH: (813) 925-0144 WWW.AMERICANPRODUCTS.COM CONTACT: KERRI BEALS	
STOREFRONT AND RELATED MATERIALS PROVIDED BY AMERICAN PRODUCTS, INC. (API). NO SUBSTITUTIONS WITHOUT WRITTEN CONSENT FROM STORE OWNER/ARCHITECT. API (813)925-0144			Assembly: CW625U (CAPTURED)		REV#:	DATE:		
			Drawn By: API CAD					
			Date: 08/10/2020					
			Scale: N.T.S.	Sheet: 1				

AMERICAN PRODUCTS,INC (API)										
<div>CW625</div>										
LIST OF PARTS										
PART #	DESCRIPTION									
CW625	2 3/4" MALE									
CW625	2 3/4" FEMALE									
CW625	OUTSIDE 90° FEMALE CORNER									
CW625	OUTSIDE 90° MALE CORNER		3-7/8" MALE STACK JOINT HEAD		INT HORIZONTAL OPERABLE VENT		2-3/4" HEAD MEMBER		2-3/4" HORIZONTAL SNAP COVER	
CW625	3-7/8" MALE HARD STACK									
CW625	3-7/8" FEMALE STACK JOINT SILL									
CW625	2-3/4" HORIZONTAL									
CW625	5-5/16" FEMALE STACK									
CW625	2-3/4" SLOPED HORIZONTAL									
CW625	2-3/4" HORIZONTAL									
CW625	3-7/8" FEMALE STACK SILL									
CW625	2-9/16" HARD STACK SILL STARTER									
AVAILABLE FINISHES										
FINISH API / US		DESCRIPTION	2-3/4" SSG GLASS ADAPTOR		BUTTON INSERT		SNAP COVER HOLDER		ADAPTOR 1" GLASS	
-	-	CLEAR								
-	-	BRONZE								
-	-	2 COAT KYNAR								
-	-	POWDER COAT								
CUSTOM POWDER COAT										
CUSTOM COLORS UPON REQUEST.										
BASIC ORDERING INFORMATION:										
(PART #)-(FINISH CODE)										
EXAMPLE : F20075-1101										
GLASS CALCULATIONS: DLO +3/4"										
API RECOMMENDS THAT THIS NOTE APPEAR WITH STOREFRONT ELEVATIONS AND SECTION VIEW DETAILS IN YOUR DRAWINGS			Customer: API IN-HOUSE		Assembly: CW625U (CAPTURED)		REV#:		DATE:	
STOREFRONT AND RELATED MATERIALS PROVIDED BY AMERICAN PRODUCTS, INC. (API). NO SUBSTITUTIONS WITHOUT WRITTEN CONSENT FROM STORE OWNER/ARCHITECT. API (813)925-0144			Drawn By: API CAD		Date: 08/10/2020		Scale: N.T.S.		Sheet: 2	



*DEAD LOAD CONNECTION
(TYPICAL) (FOR SUSPENDED
STACK JOINT AT FLOOR BELOW)

*SLIP CONNECTION (IF HARD
STACK AT FLOOR BELOW)



1 CW625U
3 ELEVATION SCALE: 1/4" = 1'-0"

2 CW625U
3 ELEVATION SCALE: 1/4" = 1'-0"

API RECOMMENDS THAT THIS NOTE APPEAR WITH
STOREFRONT ELEVATIONS AND SECTION VIEW
DETAILS IN YOUR DRAWINGS

STOREFRONT AND RELATED MATERIALS PROVIDED
BY AMERICAN PRODUCTS, INC. (API). NO
SUBSTITUTIONS WITHOUT WRITTEN CONSENT FROM
STORE OWNER/ARCHITECT. API (813)925-0144

Customer: API IN-HOUSE

Assembly: CW625U

Drawn By: API CAD

Date: 08/10/2020

Scale: N.T.S.

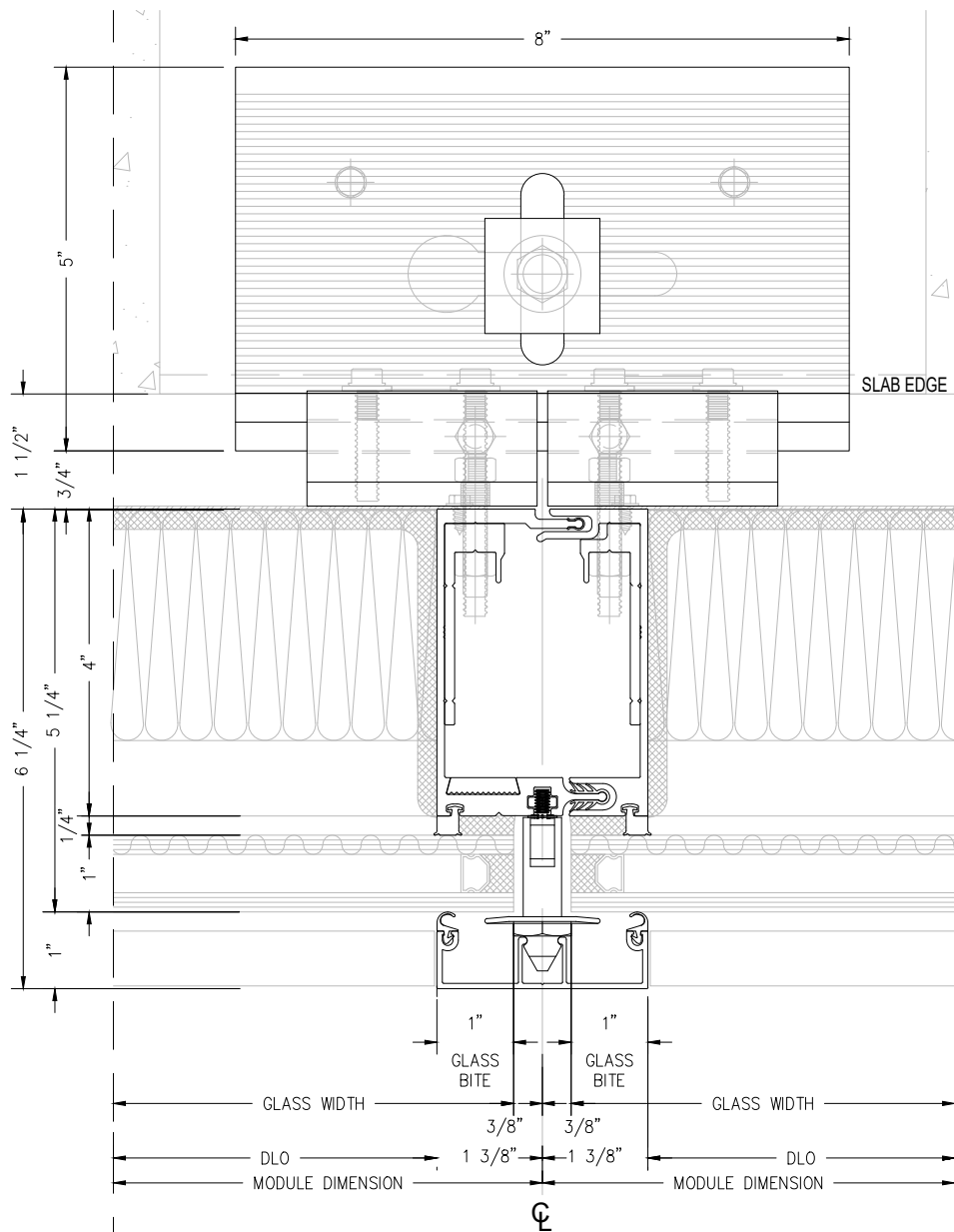
Sheet: 3

REV#:

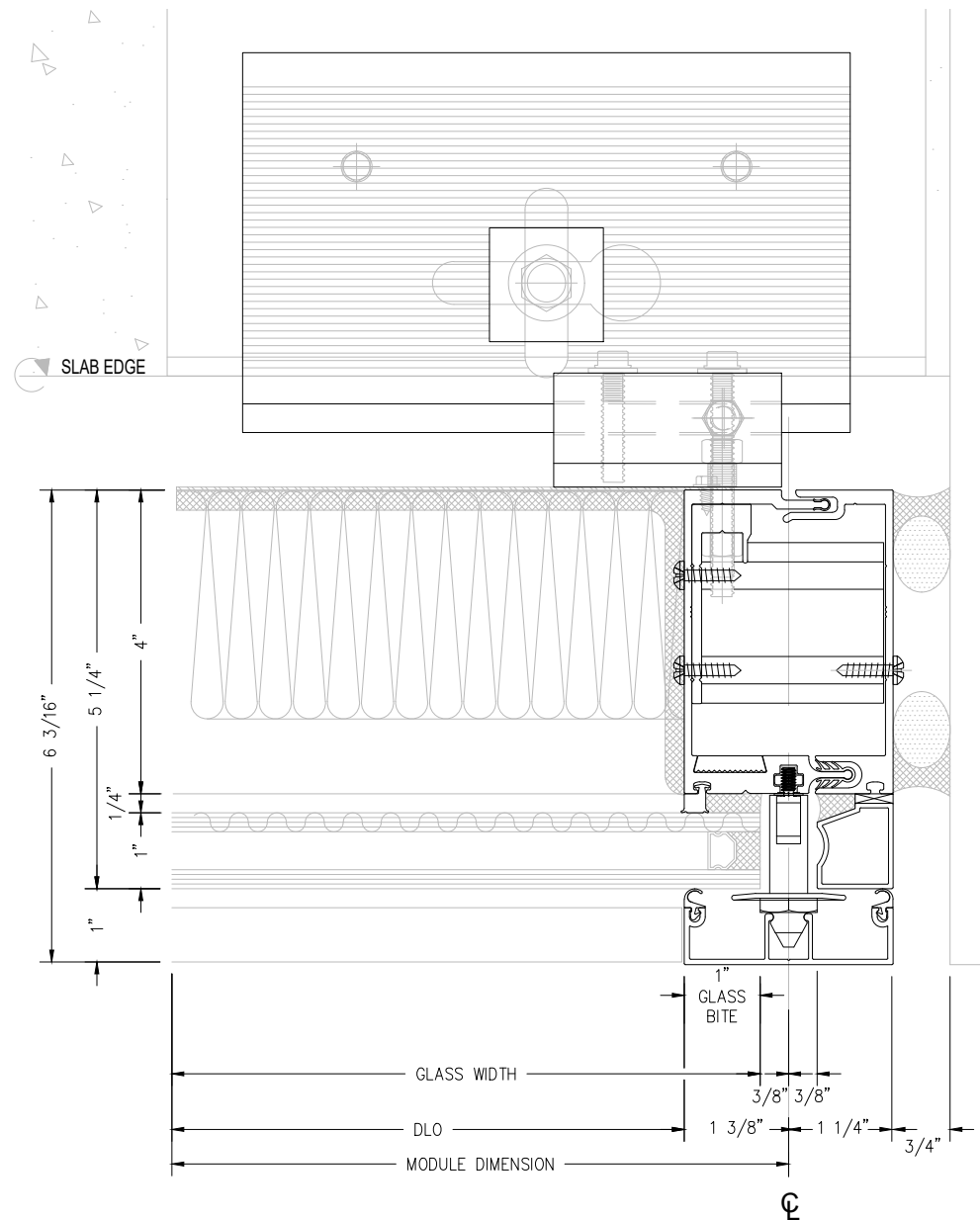
DATE:



AMERICAN PRODUCTS, INC. (API)
13909 LYNMAR BOULEVARD
TAMPA, FL. 33626
PH: (813) 925-0144
WWW.AMERICANPRODUCTS.COM
CONTACT: KERRI BEALS



1
4 SECTION TYP. 2 3/4" MULLION @ SPANDREL GLASS ALONG BRACKET N.T.S.



2
4 SECTION TYP. SSG 2 3/4" JAMB MULLION @ SPANDREL GLASS N.T.S.

API RECOMMENDS THAT THIS NOTE APPEAR WITH STOREFRONT ELEVATIONS AND SECTION VIEW DETAILS IN YOUR DRAWINGS

STOREFRONT AND RELATED MATERIALS PROVIDED BY AMERICAN PRODUCTS, INC. (API). NO SUBSTITUTIONS WITHOUT WRITTEN CONSENT FROM STORE OWNER/ARCHITECT. API (813)925-0144

Customer: API IN-HOUSE

Assembly: CW625U

Drawn By: API CAD

Date: 08/10/2020

Scale: N.T.S.

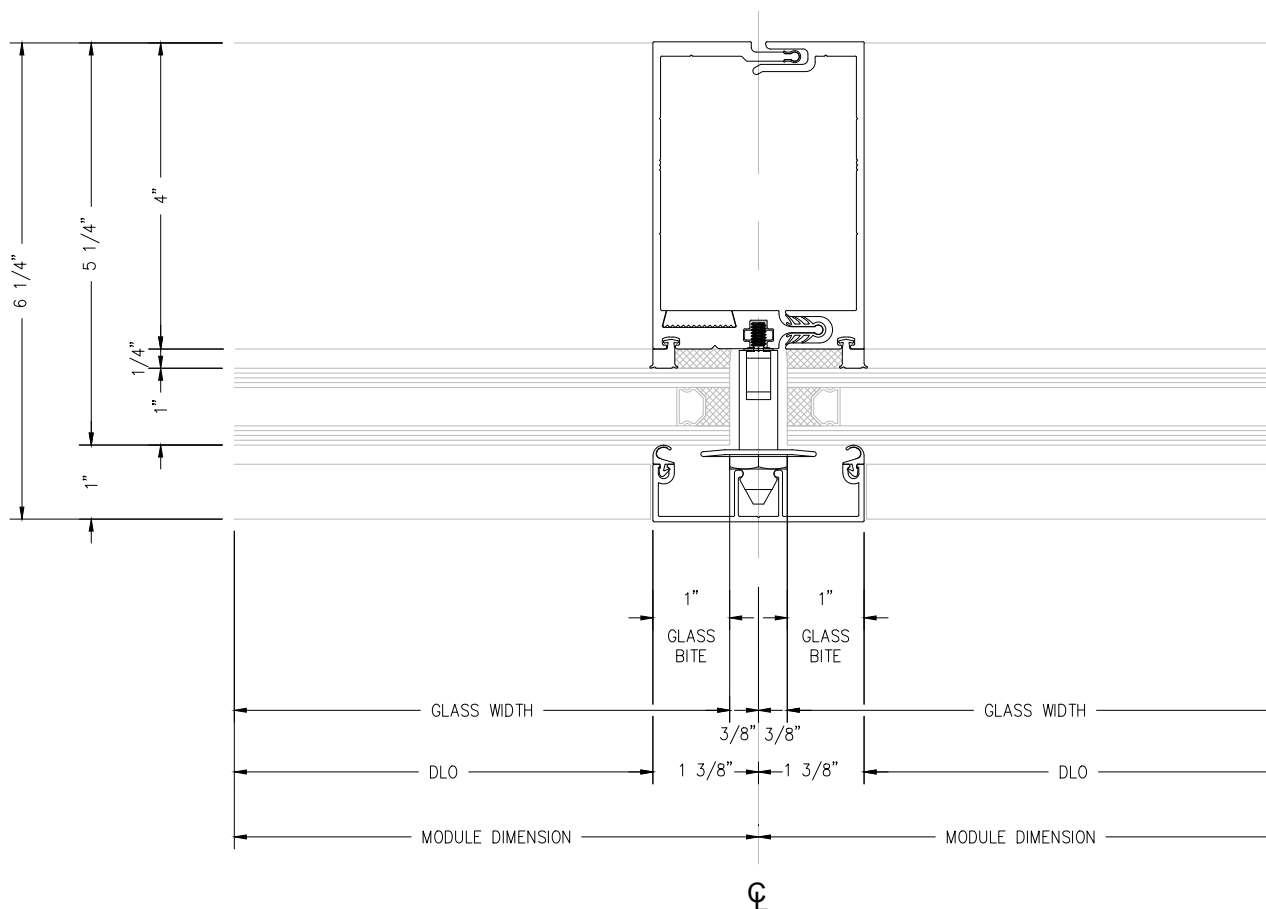
Sheet: 4

REV#:

DATE:



AMERICAN PRODUCTS, INC. (API)
13909 LYNMAR BOULEVARD
TAMPA, FL. 33626
PH: (813) 925-0144
WWW.AMERICANPRODUCTS.COM
CONTACT: KERRI BEALS



1
5 TYP. 2 3/4" MULLION @ VISION GLASS
SECTION N.T.S.

API RECOMMENDS THAT THIS NOTE APPEAR WITH
STOREFRONT ELEVATIONS AND SECTION VIEW
DETAILS IN YOUR DRAWINGS

STOREFRONT AND RELATED MATERIALS PROVIDED
BY AMERICAN PRODUCTS, INC. (API). NO
SUBSTITUTIONS WITHOUT WRITTEN CONSENT FROM
STORE OWNER/ARCHITECT. API (813)925-0144

Customer: API IN-HOUSE

Assembly: CW625U

Drawn By: API CAD

Date: 08/10/2020

Scale: N.T.S.

Sheet: 5

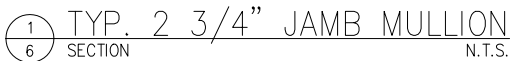
REV#:

DATE:



AMERICAN
PRODUCTS, INC.

AMERICAN PRODUCTS, INC. (API)
13909 LYNMAR BOULEVARD
TAMPA, FL. 33626
PH: (813) 925-0144
WWW.AMERICANPRODUCTS.COM
CONTACT: KERRI BEALS

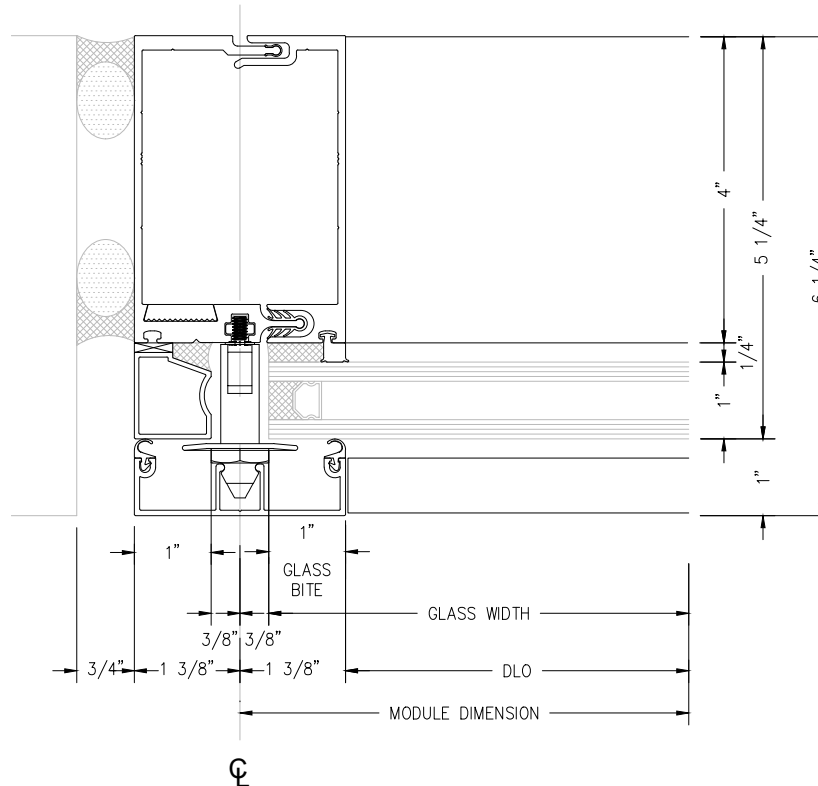


STOREFRONT AND RELATED MATERIALS PROVIDED
BY AMERICAN PRODUCTS, INC. (API). NO
SUBSTITUTIONS WITHOUT WRITTEN CONSENT FROM
STORE OWNER/ARCHITECT. API (813)925-0144

Sheet: 6

API
AMERICAN
PRODUCTS, INC.

AMERICAN PRODUCTS, INC. (API)
13909 LYNMAR BOULEVARD
TAMPA, FL. 33626
PH: (813) 925-0144
WWW.AMERICANPRODUCTS.COM
CONTACT: KERRI BEALS



1
7 TYP. 2 3/4" JAMB MULLION
SECTION N.T.S.

API RECOMMENDS THAT THIS NOTE APPEAR WITH
STOREFRONT ELEVATIONS AND SECTION VIEW
DETAILS IN YOUR DRAWINGS

STOREFRONT AND RELATED MATERIALS PROVIDED
BY AMERICAN PRODUCTS, INC. (API). NO
SUBSTITUTIONS WITHOUT WRITTEN CONSENT FROM
STORE OWNER/ARCHITECT. API (813)925-0144

Customer: API IN-HOUSE

Assembly: CW625U

REV#:

DATE:

Drawn By: API CAD

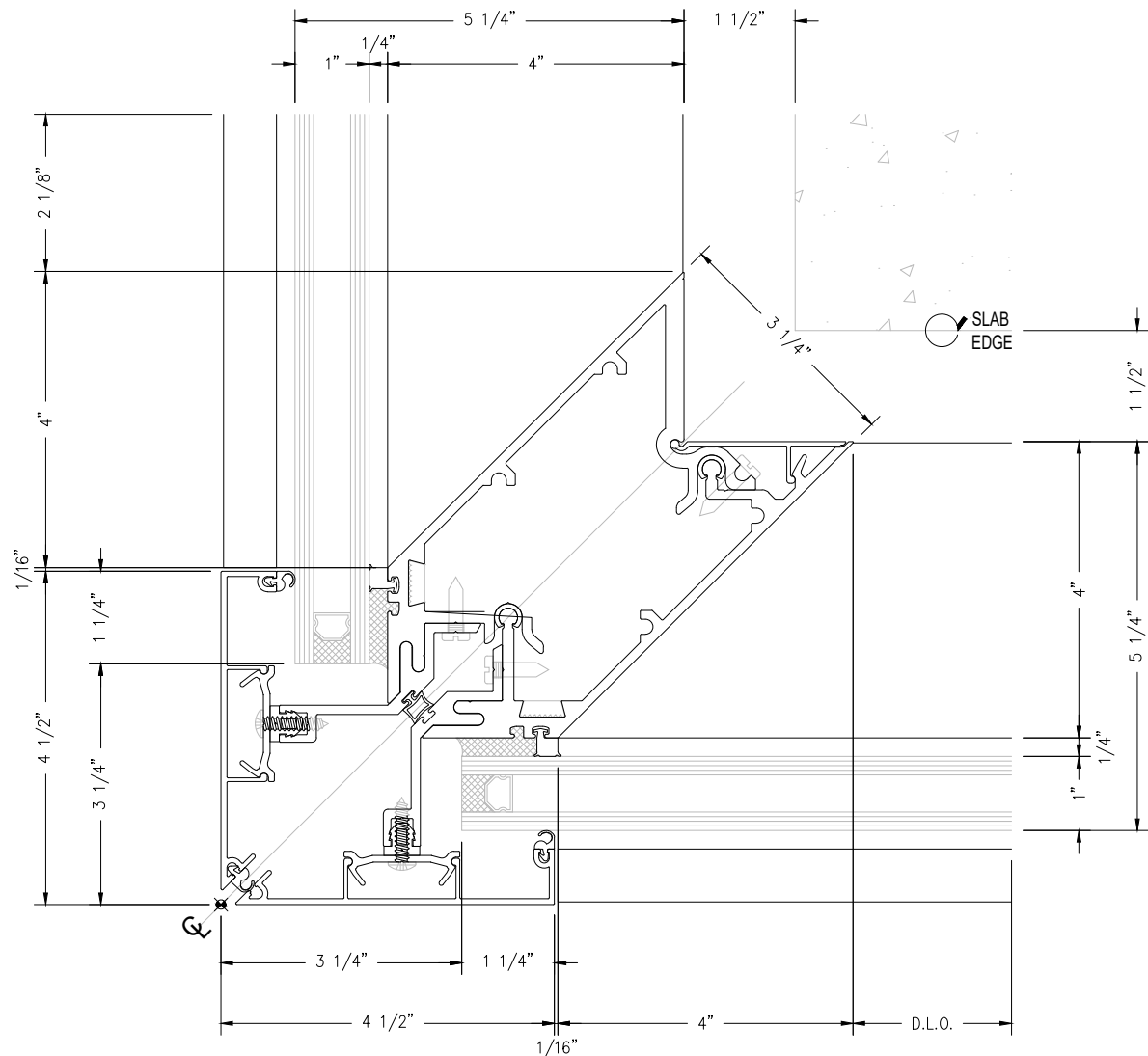
Date: 08/10/2020

Scale: N.T.S.

Sheet: 7



AMERICAN PRODUCTS, INC. (API)
13909 LYNMAR BOULEVARD
TAMPA, FL. 33626
PH: (813) 925-0144
WWW.AMERICANPRODUCTS.COM
CONTACT: KERRI BEALS



1
8 SECTION TYP. 90° OUTSIDE CORNER MULLION @ VISION AREA
N.T.S.

API RECOMMENDS THAT THIS NOTE APPEAR WITH
STOREFRONT ELEVATIONS AND SECTION VIEW
DETAILS IN YOUR DRAWINGS

STOREFRONT AND RELATED MATERIALS PROVIDED
BY AMERICAN PRODUCTS, INC. (API). NO
SUBSTITUTIONS WITHOUT WRITTEN CONSENT FROM
STORE OWNER/ARCHITECT. API (813)925-0144

Customer: API IN-HOUSE

Assembly: CW625U

REV#:

DATE:

Drawn By: API CAD

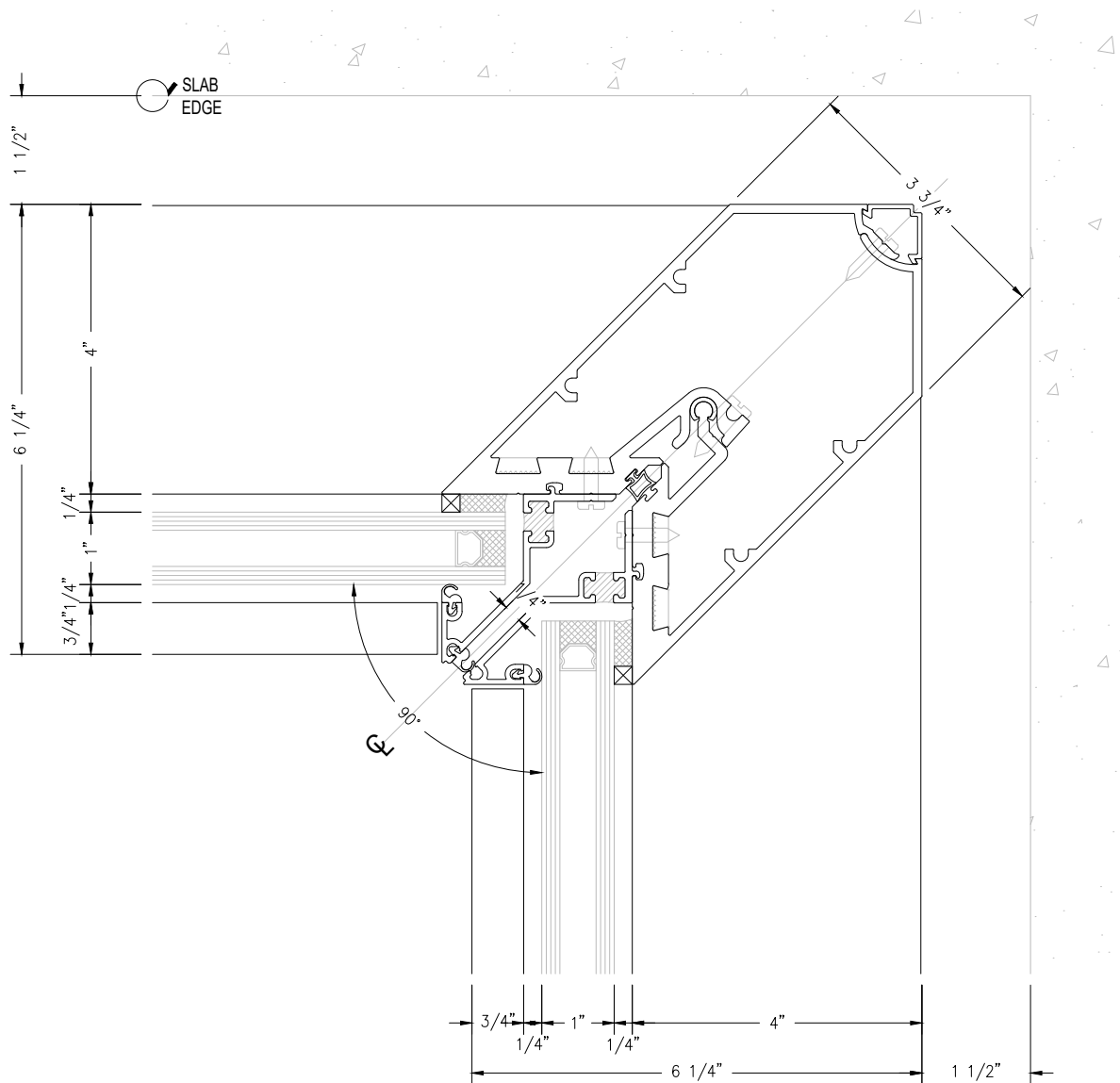
Date: 08/10/2020

Scale: N.T.S.

Sheet: 8



AMERICAN PRODUCTS, INC. (API)
13909 LYNMAR BOULEVARD
TAMPA, FL. 33626
PH: (813) 925-0144
WWW.AMERICANPRODUCTS.COM
CONTACT: KERRI BEALS



1
9 SECTION TYP. 90° CAPTURED INSIDE CORNER MULLION
N.T.S.

API RECOMMENDS THAT THIS NOTE APPEAR WITH
STOREFRONT ELEVATIONS AND SECTION VIEW
DETAILS IN YOUR DRAWINGS

STOREFRONT AND RELATED MATERIALS PROVIDED
BY AMERICAN PRODUCTS, INC. (API). NO
SUBSTITUTIONS WITHOUT WRITTEN CONSENT FROM
STORE OWNER/ARCHITECT. API (813)925-0144

Customer: API IN-HOUSE

Assembly: CW625U

REV#:

DATE:

Drawn By: API CAD

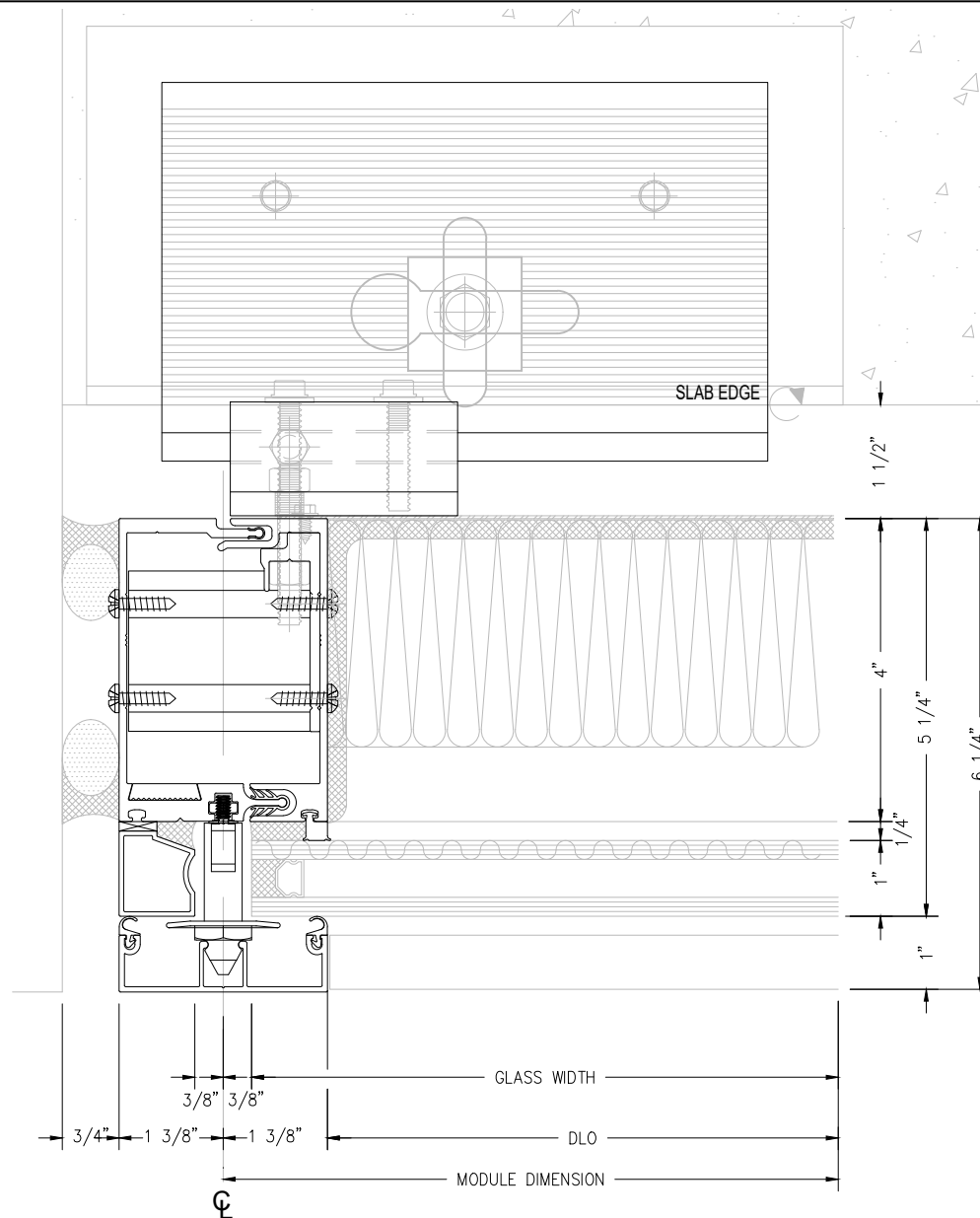
Date: 08/10/2020

Scale: N.T.S.

Sheet: 9



AMERICAN PRODUCTS, INC. (API)
13909 LYNMAR BOULEVARD
TAMPA, FL. 33626
PH: (813) 925-0144
WWW.AMERICANPRODUCTS.COM
CONTACT: KERRI BEALS



1 TYP. 2 3/4" JAMB MULLION @ SPANDREL GLASS
10 SECTION N.T.S.

API RECOMMENDS THAT THIS NOTE APPEAR WITH
STOREFRONT ELEVATIONS AND SECTION VIEW
DETAILS IN YOUR DRAWINGS

STOREFRONT AND RELATED MATERIALS PROVIDED
BY AMERICAN PRODUCTS, INC. (API). NO
SUBSTITUTIONS WITHOUT WRITTEN CONSENT FROM
STORE OWNER/ARCHITECT. API (813)925-0144

Customer: API IN-HOUSE

Assembly: CW625U

REV#:

DATE:

Drawn By: API CAD

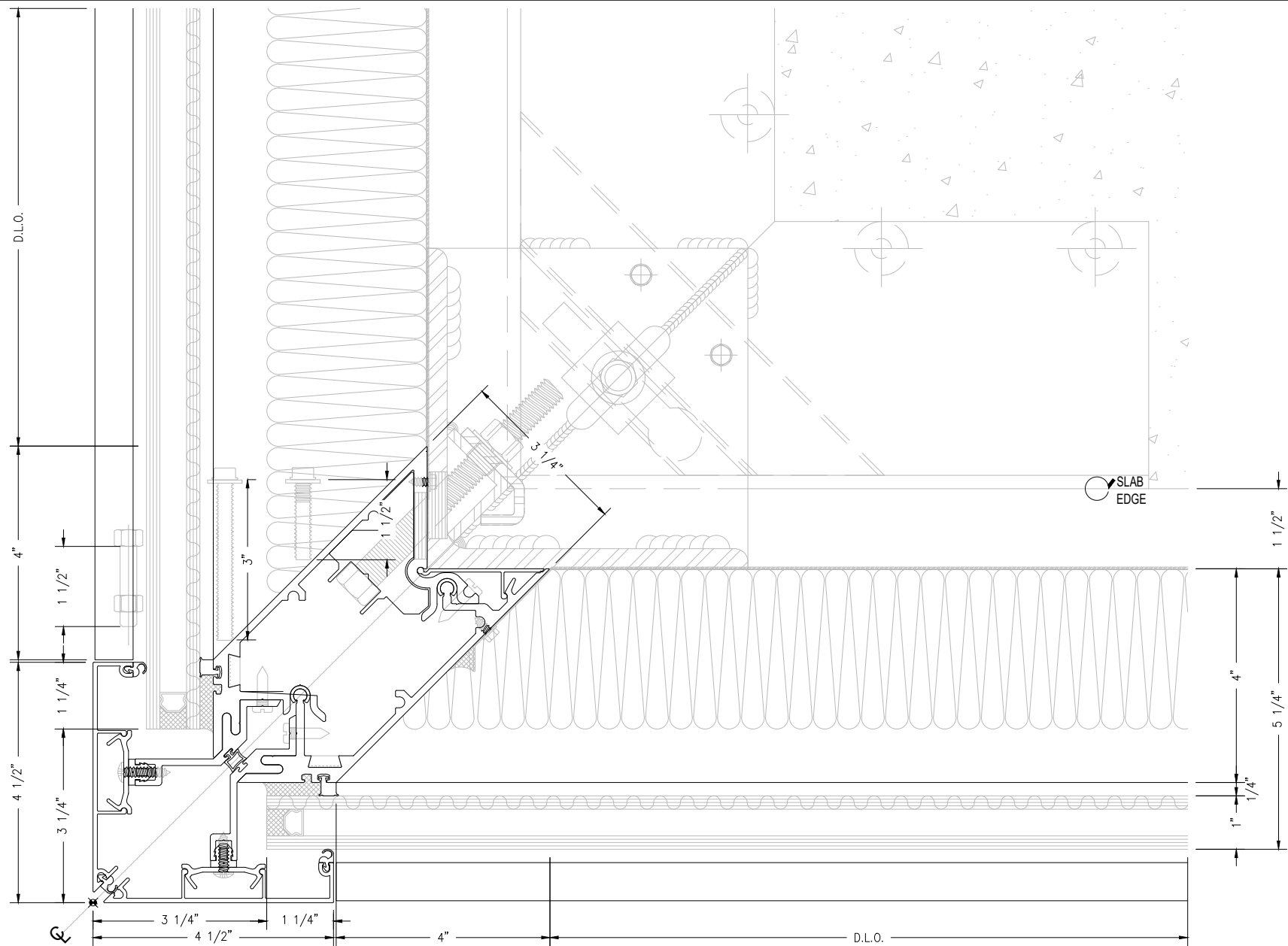
Date: 08/10/2020

Scale: N.T.S.

Sheet: 10



AMERICAN PRODUCTS, INC. (API)
13909 LYNMAR BOULEVARD
TAMPA, FL. 33626
PH: (813) 925-0144
WWW.AMERICANPRODUCTS.COM
CONTACT: KERRI BEALS



1
11 SECTION TYP. 90° CAPTURED OUTSIDE CORNER MULLION @ ANCHOR
N.T.S.

API RECOMMENDS THAT THIS NOTE APPEAR WITH
STOREFRONT ELEVATIONS AND SECTION VIEW
DETAILS IN YOUR DRAWINGS

STOREFRONT AND RELATED MATERIALS PROVIDED
BY AMERICAN PRODUCTS, INC. (API). NO
SUBSTITUTIONS WITHOUT WRITTEN CONSENT FROM
STORE OWNER/ARCHITECT. API (813)925-0144

Customer: API IN-HOUSE

Assembly: CW625U

Drawn By: API CAD

Date: 08/10/2020

Scale: N.T.S.

Sheet: 11

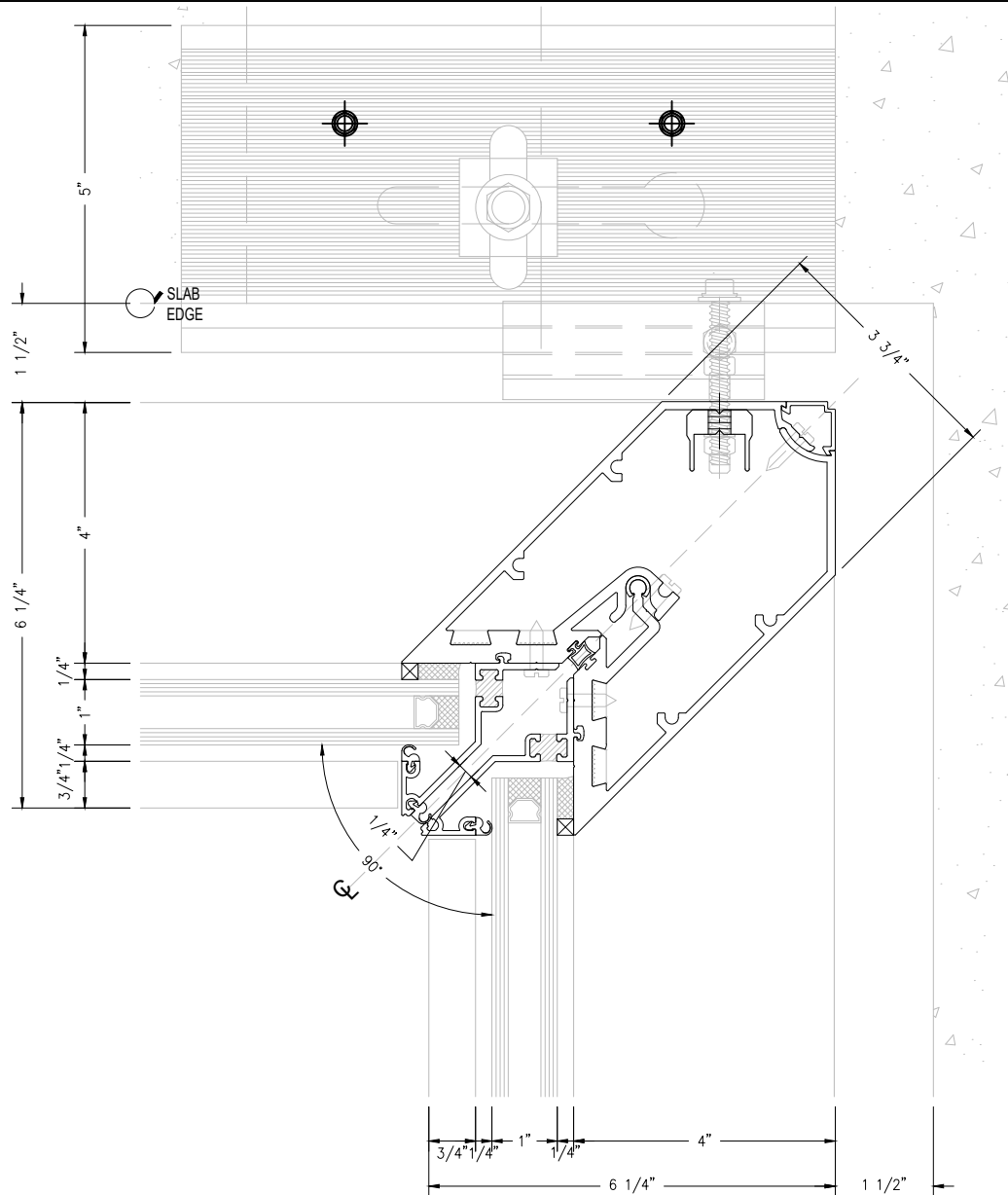
REV#:

DATE:



AMERICAN
PRODUCTS, INC.

AMERICAN PRODUCTS, INC. (API)
13909 LYNMAR BOULEVARD
TAMPA, FL. 33626
PH: (813) 925-0144
WWW.AMERICANPRODUCTS.COM
CONTACT: KERRI BEALS



1
12 SECTION TYP. 90° CAPTURED INSIDE CORNER MULLION @ ANCHOR
N.T.S.

API RECOMMENDS THAT THIS NOTE APPEAR WITH
STOREFRONT ELEVATIONS AND SECTION VIEW
DETAILS IN YOUR DRAWINGS

STOREFRONT AND RELATED MATERIALS PROVIDED
BY AMERICAN PRODUCTS, INC. (API). NO
SUBSTITUTIONS WITHOUT WRITTEN CONSENT FROM
STORE OWNER/ARCHITECT. API (813)925-0144

Customer: API IN-HOUSE

Assembly: CW625U

REV#:

DATE:

Drawn By: API CAD

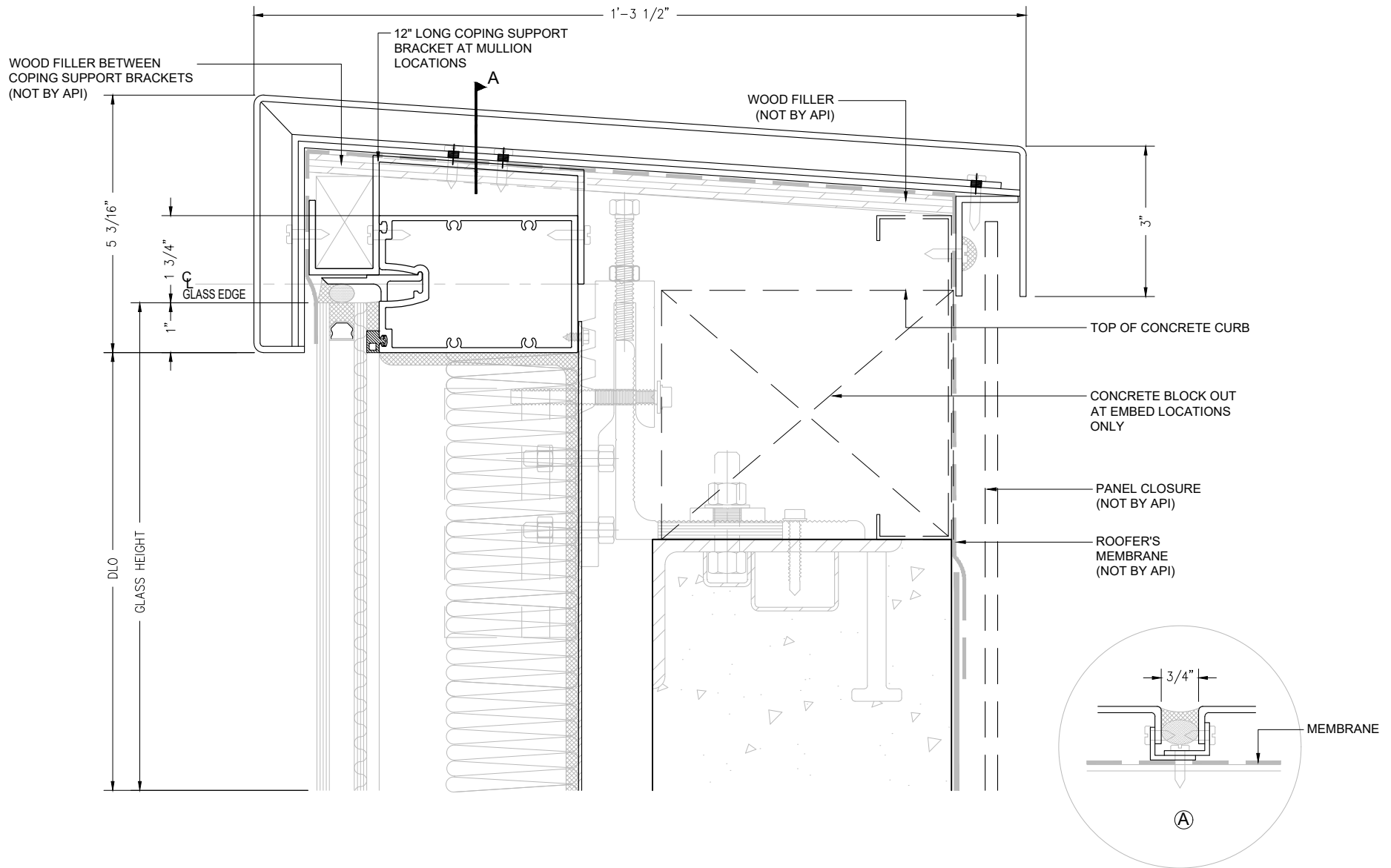
Date: 08/10/2020

Scale: N.T.S.

Sheet: 12



AMERICAN PRODUCTS, INC. (API)
13909 LYNMAR BOULEVARD
TAMPA, FL. 33626
PH: (813) 925-0144
WWW.AMERICANPRODUCTS.COM
CONTACT: KERRI BEALS



1
13 SECTION TYP. PARAPET COPING DETAIL N.T.S.

API RECOMMENDS THAT THIS NOTE APPEAR WITH STOREFRONT ELEVATIONS AND SECTION VIEW DETAILS IN YOUR DRAWINGS

STOREFRONT AND RELATED MATERIALS PROVIDED BY AMERICAN PRODUCTS, INC. (API). NO SUBSTITUTIONS WITHOUT WRITTEN CONSENT FROM STORE OWNER/ARCHITECT. API (813)925-0144

Customer: API IN-HOUSE

Assembly: CW625U

Drawn By: API CAD

Date: 08/10/2020

Scale: N.T.S.

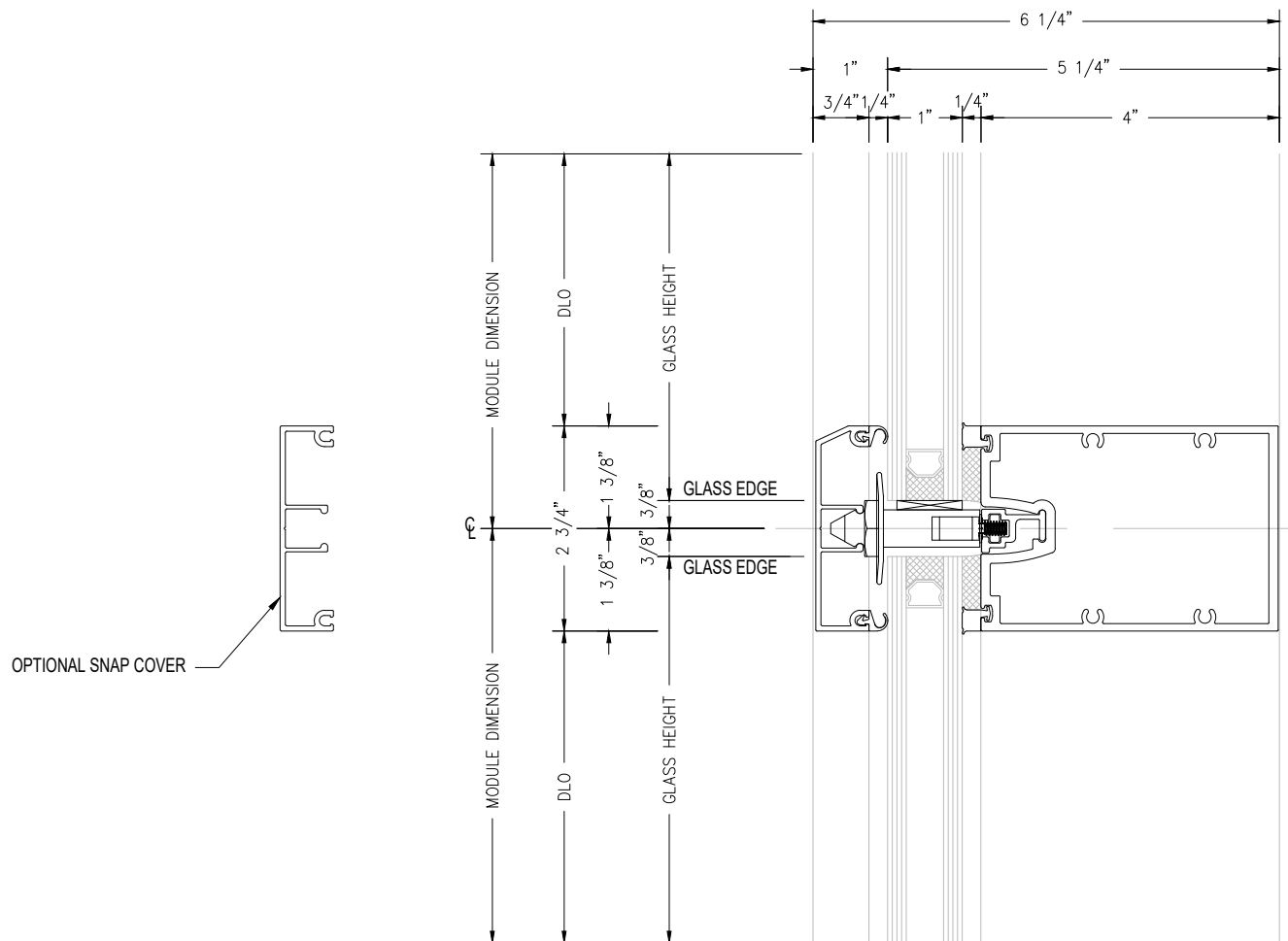
Sheet: 13

REV#:

DATE:



AMERICAN PRODUCTS, INC. (API)
13909 LYNMAR BOULEVARD
TAMPA, FL. 33626
PH: (813) 925-0144
WWW.AMERICANPRODUCTS.COM
CONTACT: KERRI BEALS



1 TYP. 2 3/4" HORIZONTAL
15 SECTION N.T.S.

API RECOMMENDS THAT THIS NOTE APPEAR WITH
STOREFRONT ELEVATIONS AND SECTION VIEW
DETAILS IN YOUR DRAWINGS

STOREFRONT AND RELATED MATERIALS PROVIDED
BY AMERICAN PRODUCTS, INC. (API). NO
SUBSTITUTIONS WITHOUT WRITTEN CONSENT FROM
STORE OWNER/ARCHITECT. API (813)925-0144

Customer: API IN-HOUSE

Assembly: CW625U

REV#:

DATE:

Drawn By: API CAD

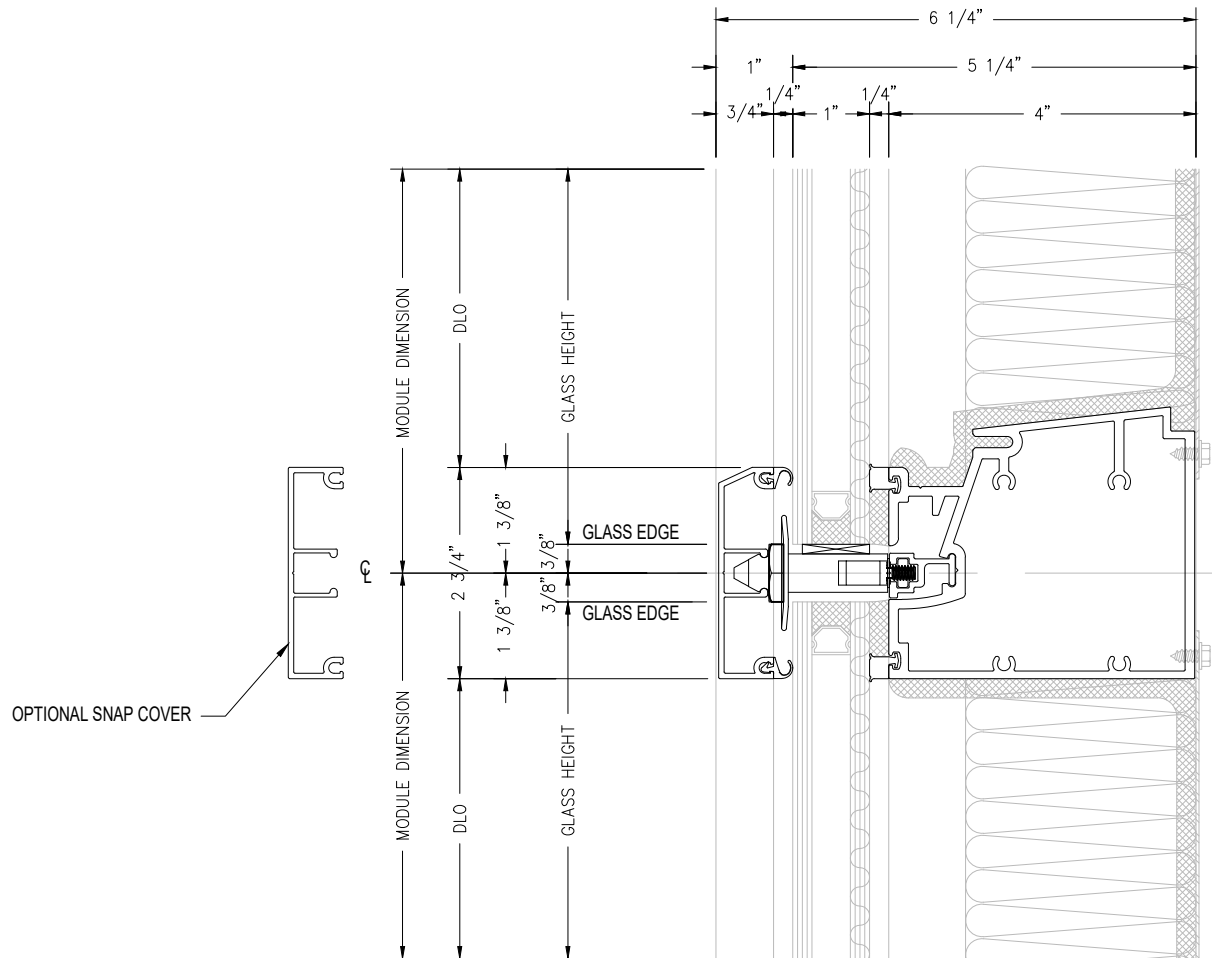
Date: 08/10/2020

Scale: N.T.S.

Sheet: 15



AMERICAN PRODUCTS, INC. (API)
13909 LYNMAR BOULEVARD
TAMPA, FL. 33626
PH: (813) 925-0144
WWW.AMERICANPRODUCTS.COM
CONTACT: KERRI BEALS



1
16 SECTION

TYP. SSG 2 3/4" HORIZONTAL @ SPANDREL GLASS
N.T.S.

API RECOMMENDS THAT THIS NOTE APPEAR WITH
STOREFRONT ELEVATIONS AND SECTION VIEW
DETAILS IN YOUR DRAWINGS

STOREFRONT AND RELATED MATERIALS PROVIDED
BY AMERICAN PRODUCTS, INC. (API). NO
SUBSTITUTIONS WITHOUT WRITTEN CONSENT FROM
STORE OWNER/ARCHITECT. API (813)925-0144

Customer: API IN-HOUSE

Assembly: CW625U

REV#:

DATE:

Drawn By: API CAD

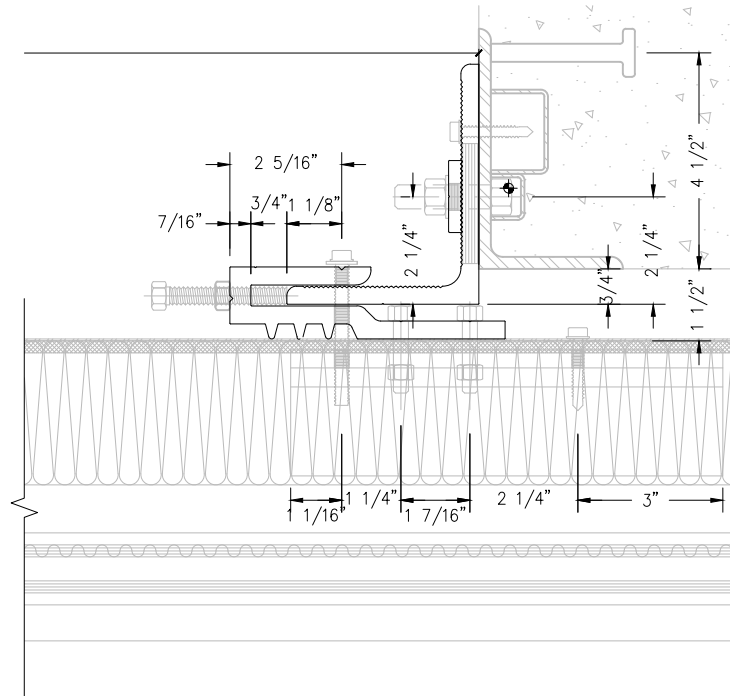
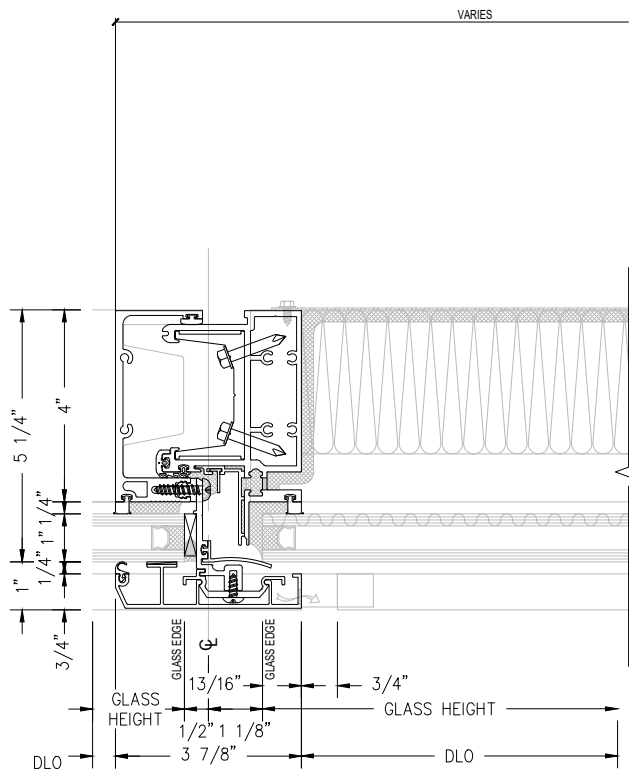
Date: 08/10/2020

Scale: N.T.S.

Sheet: 16



AMERICAN PRODUCTS, INC. (API)
13909 LYNMAR BOULEVARD
TAMPA, FL. 33626
PH: (813) 925-0144
WWW.AMERICANPRODUCTS.COM
CONTACT: KERRI BEALS



1
17 TYP. 3 7/8" STACK JOINT
SECTION N.T.S.

API RECOMMENDS THAT THIS NOTE APPEAR WITH
STOREFRONT ELEVATIONS AND SECTION VIEW
DETAILS IN YOUR DRAWINGS

STOREFRONT AND RELATED MATERIALS PROVIDED
BY AMERICAN PRODUCTS, INC. (API). NO
SUBSTITUTIONS WITHOUT WRITTEN CONSENT FROM
STORE OWNER/ARCHITECT. API (813)925-0144

Customer: API IN-HOUSE

Assembly: CW625U

Drawn By: API CAD

Date: 08/10/2020

Scale: N.T.S.

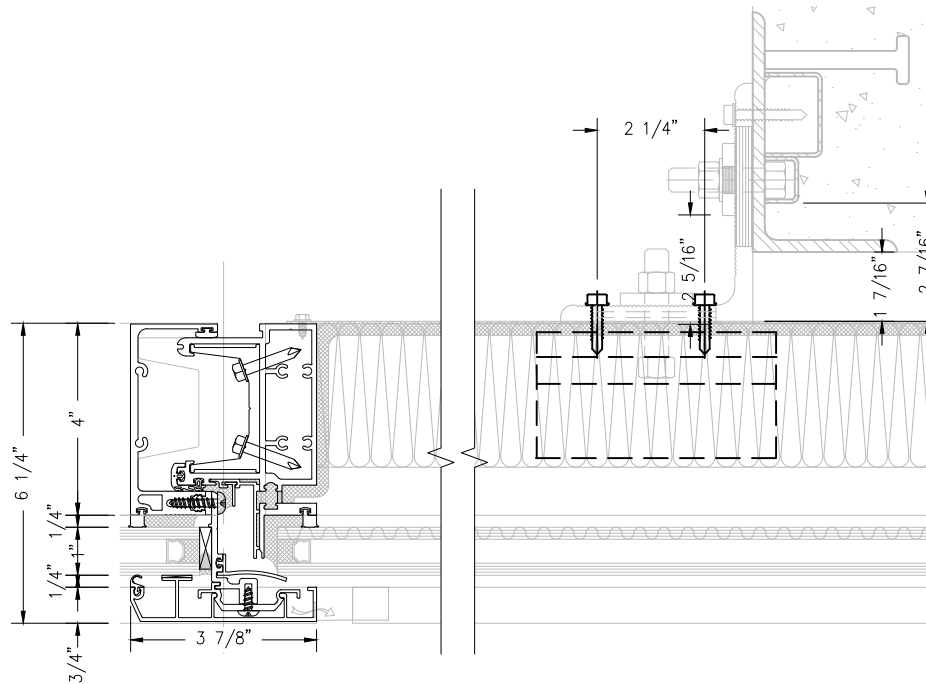
Sheet: 17

REV#:

DATE:



AMERICAN PRODUCTS, INC. (API)
13909 LYNMAR BOULEVARD
TAMPA, FL. 33626
PH: (813) 925-0144
WWW.AMERICANPRODUCTS.COM
CONTACT: KERRI BEALS



1
18 TYP. 3 7/8" SLIP CONNECTION
SECTION N.T.S.

API RECOMMENDS THAT THIS NOTE APPEAR WITH
STOREFRONT ELEVATIONS AND SECTION VIEW
DETAILS IN YOUR DRAWINGS

STOREFRONT AND RELATED MATERIALS PROVIDED
BY AMERICAN PRODUCTS, INC. (API). NO
SUBSTITUTIONS WITHOUT WRITTEN CONSENT FROM
STORE OWNER/ARCHITECT. API (813)925-0144

Customer: API IN-HOUSE

Assembly: CW625U

REV#:

DATE:

Drawn By: API CAD

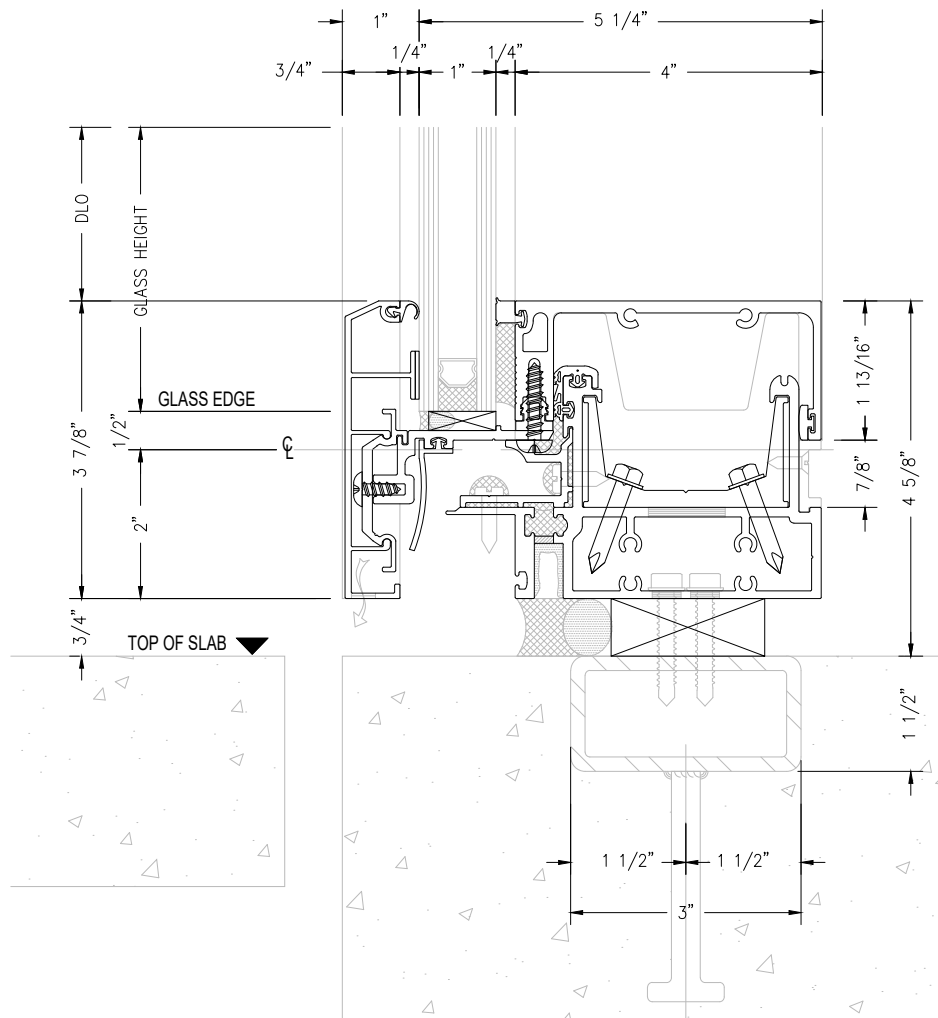
Date: 08/10/2020

Scale: N.T.S.

Sheet: 18



AMERICAN PRODUCTS, INC. (API)
13909 LYNMAR BOULEVARD
TAMPA, FL. 33626
PH: (813) 925-0144
WWW.AMERICANPRODUCTS.COM
CONTACT: KERRI BEALS



1
19 SECTION

TYP. 3 7/8" HARD STACK SILL
N.T.S.

API RECOMMENDS THAT THIS NOTE APPEAR WITH
STOREFRONT ELEVATIONS AND SECTION VIEW
DETAILS IN YOUR DRAWINGS

STOREFRONT AND RELATED MATERIALS PROVIDED
BY AMERICAN PRODUCTS, INC. (API). NO
SUBSTITUTIONS WITHOUT WRITTEN CONSENT FROM
STORE OWNER/ARCHITECT. API (813)925-0144

Customer: API IN-HOUSE

Assembly: CW625U

REV#:

DATE:

Drawn By: API CAD

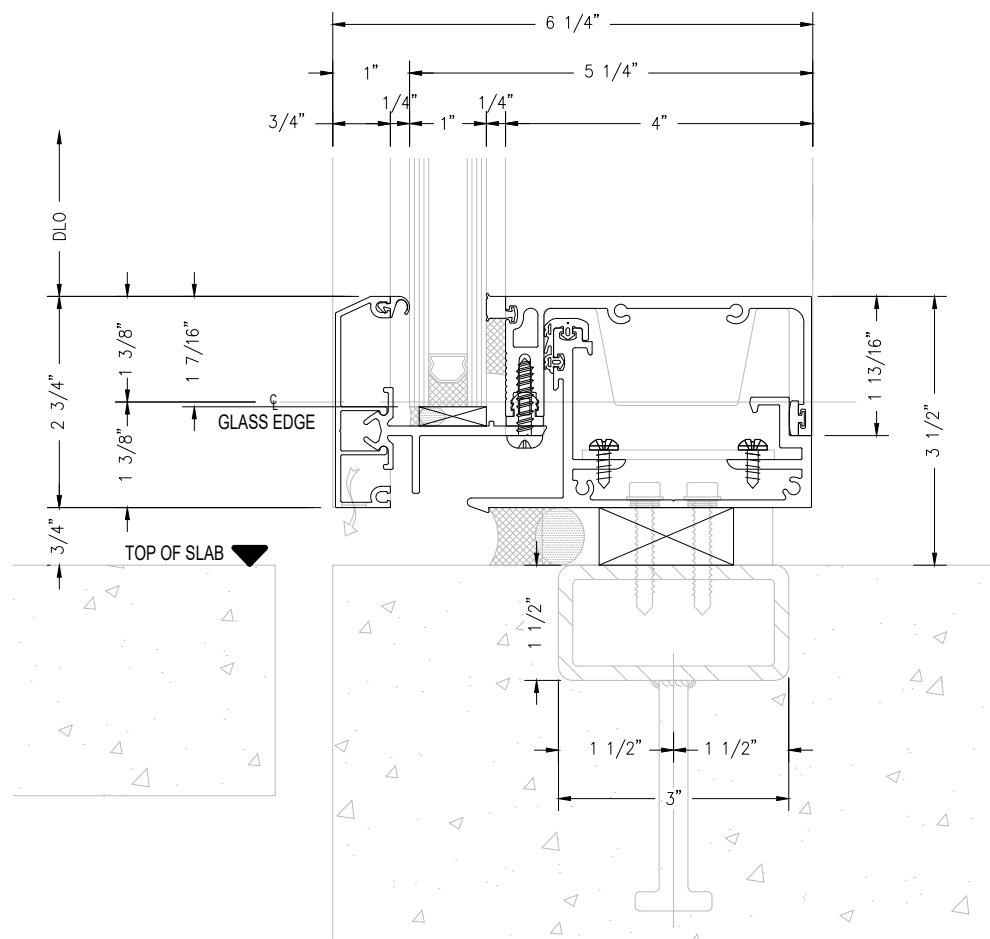
Date: 08/10/2020

Scale: N.T.S.

Sheet: 19



AMERICAN PRODUCTS, INC. (API)
13909 LYNMAR BOULEVARD
TAMPA, FL. 33626
PH: (813) 925-0144
WWW.AMERICANPRODUCTS.COM
CONTACT: KERRI BEALS



1 2 3/4" HARD STACK SILL
20 SECTION N.T.S.

API RECOMMENDS THAT THIS NOTE APPEAR WITH
STOREFRONT ELEVATIONS AND SECTION VIEW
DETAILS IN YOUR DRAWINGS

STOREFRONT AND RELATED MATERIALS PROVIDED
BY AMERICAN PRODUCTS, INC. (API). NO
SUBSTITUTIONS WITHOUT WRITTEN CONSENT FROM
STORE OWNER/ARCHITECT. API (813)925-0144

Customer: API IN-HOUSE

Assembly: CW625U

REV#:

DATE:

Drawn By: API CAD

Date: 08/10/2020

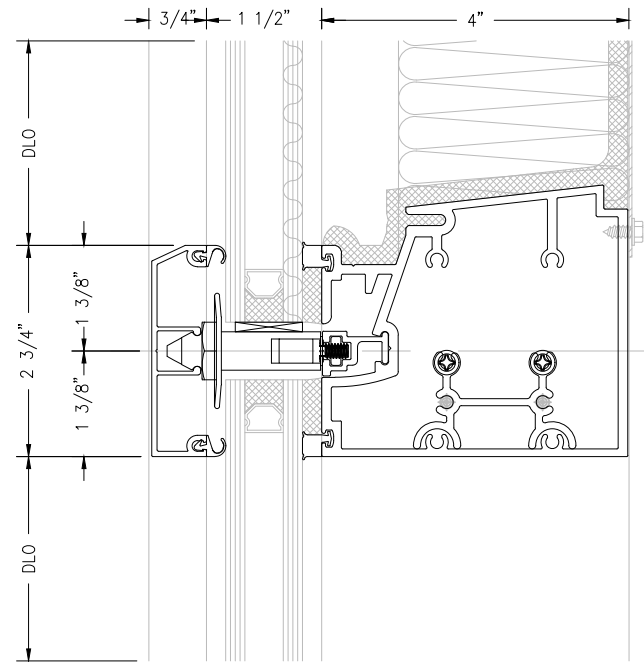
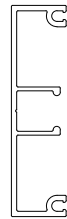
Scale: N.T.S.

Sheet: 20



AMERICAN PRODUCTS, INC. (API)
13909 LYNMAR BOULEVARD
TAMPA, FL. 33626
PH: (813) 925-0144
WWW.AMERICANPRODUCTS.COM
CONTACT: KERRI BEALS

OPTIONAL SNAP COVER



1
21 SECTION TYP. SSG 2 3/4" HORIZONTAL @ SPANDREL GLASS W/ SPACER @ JAMB CONDITION N.T.S.

API RECOMMENDS THAT THIS NOTE APPEAR WITH
STOREFRONT ELEVATIONS AND SECTION VIEW
DETAILS IN YOUR DRAWINGS

STOREFRONT AND RELATED MATERIALS PROVIDED
BY AMERICAN PRODUCTS, INC. (API). NO
SUBSTITUTIONS WITHOUT WRITTEN CONSENT FROM
STORE OWNER/ARCHITECT. API (813)925-0144

Customer: API IN-HOUSE

Assembly: CW625U

Drawn By: API CAD

Date: 08/10/2020

Scale: N.T.S.

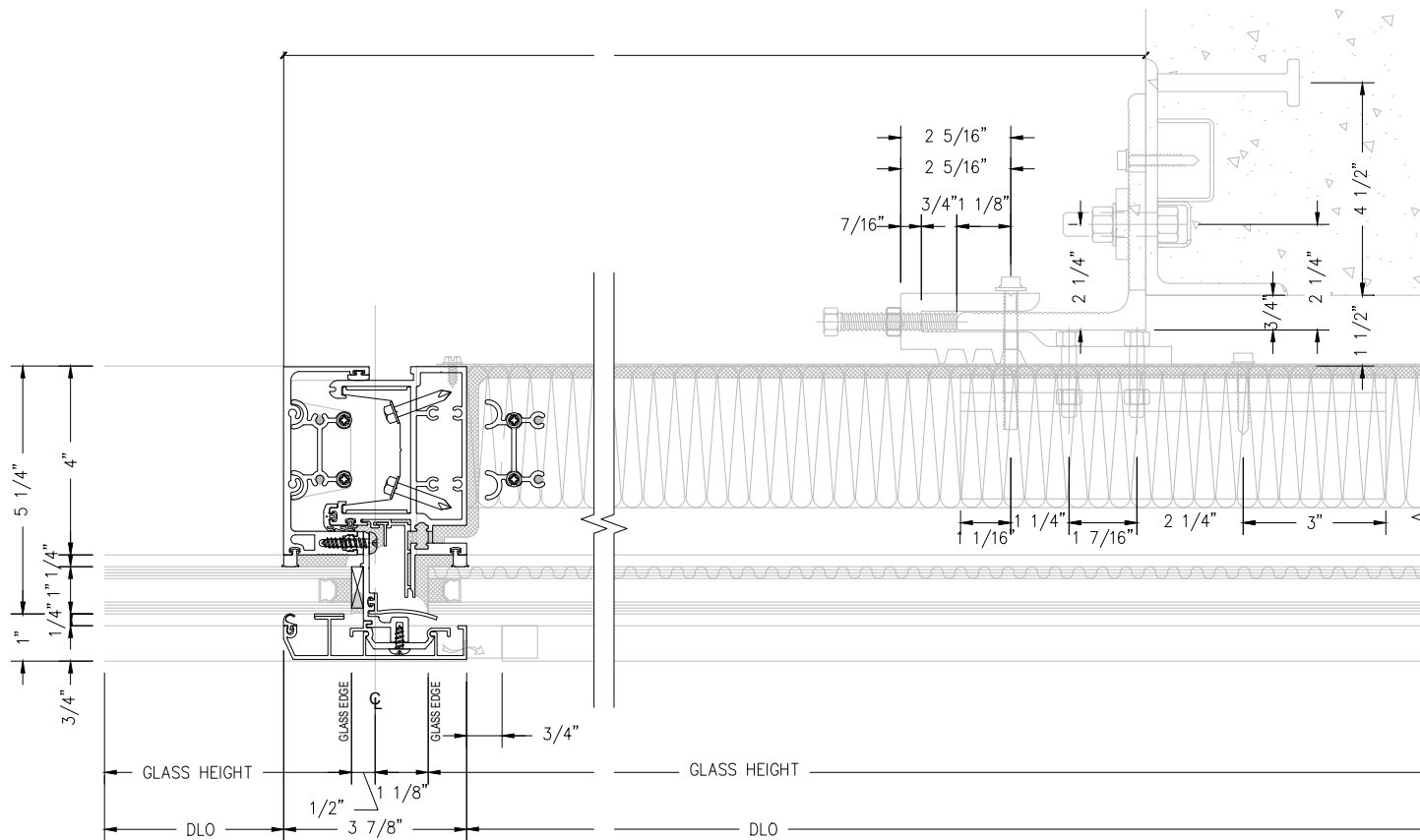
Sheet: 21

REV#:

DATE:



AMERICAN PRODUCTS, INC. (API)
13909 LYNMAR BOULEVARD
TAMPA, FL. 33626
PH: (813) 925-0144
WWW.AMERICANPRODUCTS.COM
CONTACT: KERRI BEALS



1
22 SECTION TYP. SSG 3 7/8" STACK JOINT W/ SPACER @ JAMB CONDITION N.T.S.

API RECOMMENDS THAT THIS NOTE APPEAR WITH STOREFRONT ELEVATIONS AND SECTION VIEW DETAILS IN YOUR DRAWINGS

STOREFRONT AND RELATED MATERIALS PROVIDED BY AMERICAN PRODUCTS, INC. (API). NO SUBSTITUTIONS WITHOUT WRITTEN CONSENT FROM STORE OWNER/ARCHITECT. API (813)925-0144

Customer: API IN-HOUSE

Assembly: CW625U

Drawn By: API CAD

Date: 08/10/2020

Scale: N.T.S.

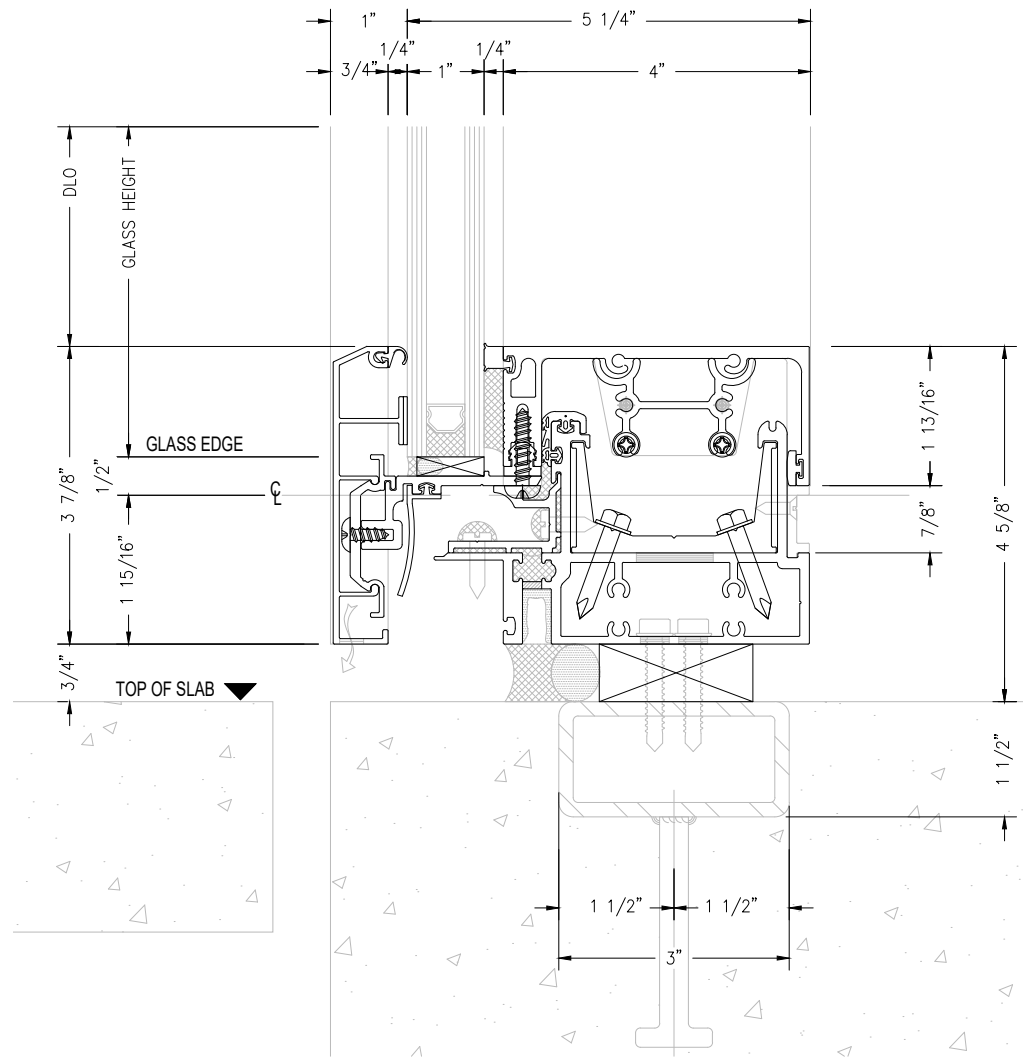
Sheet: 22

REV#:

DATE:



AMERICAN PRODUCTS, INC. (API)
13909 LYNMAR BOULEVARD
TAMPA, FL. 33626
PH: (813) 925-0144
WWW.AMERICANPRODUCTS.COM
CONTACT: KERRI BEALS



1
23 SECTION TYP. SSG 3 7/8" HARD STACK JOINT W/ SPACER @ JAMB CONDITION
N.T.S.

API RECOMMENDS THAT THIS NOTE APPEAR WITH
STOREFRONT ELEVATIONS AND SECTION VIEW
DETAILS IN YOUR DRAWINGS

STOREFRONT AND RELATED MATERIALS PROVIDED
BY AMERICAN PRODUCTS, INC. (API). NO
SUBSTITUTIONS WITHOUT WRITTEN CONSENT FROM
STORE OWNER/ARCHITECT. API (813)925-0144

Customer: API IN-HOUSE

Assembly: CW625U

REV#:

DATE:

Drawn By: API CAD

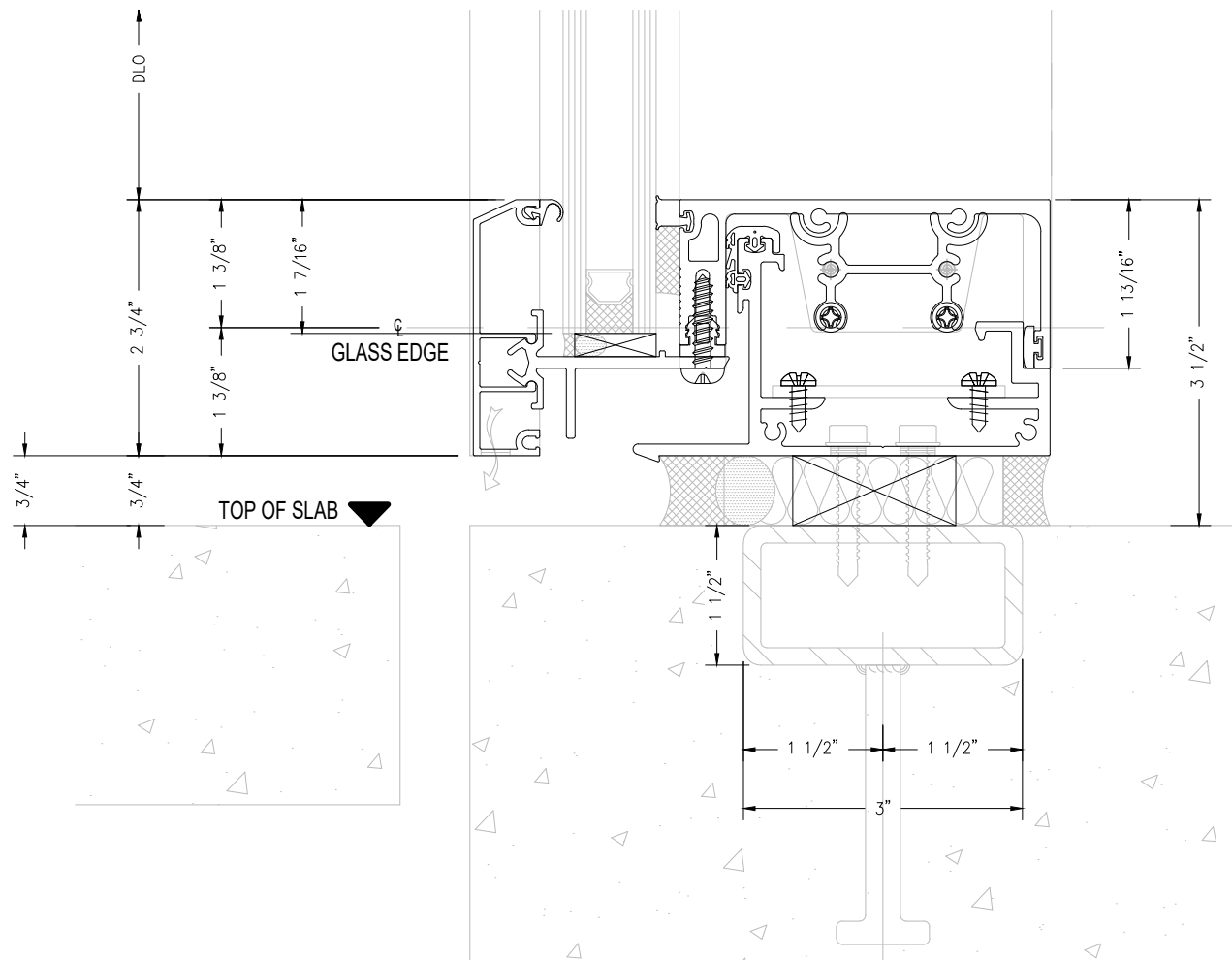
Date: 08/10/2020

Scale: N.T.S.

Sheet: 23



AMERICAN PRODUCTS, INC. (API)
13909 LYNMAR BOULEVARD
TAMPA, FL. 33626
PH: (813) 925-0144
WWW.AMERICANPRODUCTS.COM
CONTACT: KERRI BEALS



1
24 SECTION TYP. SSG 2 3/4" HARD STACK SILL W/ SPACER @ JAMB CONDITION
N.T.S.

API RECOMMENDS THAT THIS NOTE APPEAR WITH
STOREFRONT ELEVATIONS AND SECTION VIEW
DETAILS IN YOUR DRAWINGS

STOREFRONT AND RELATED MATERIALS PROVIDED
BY AMERICAN PRODUCTS, INC. (API). NO
SUBSTITUTIONS WITHOUT WRITTEN CONSENT FROM
STORE OWNER/ARCHITECT. API (813)925-0144

Customer: API IN-HOUSE

Assembly: CW625U

REV#:

DATE:

Drawn By: API CAD

Date: 08/10/2020

Scale: N.T.S.

Sheet: 24



AMERICAN PRODUCTS, INC. (API)
13909 LYNMAR BOULEVARD
TAMPA, FL. 33626
PH: (813) 925-0144
WWW.AMERICANPRODUCTS.COM
CONTACT: KERRI BEALS