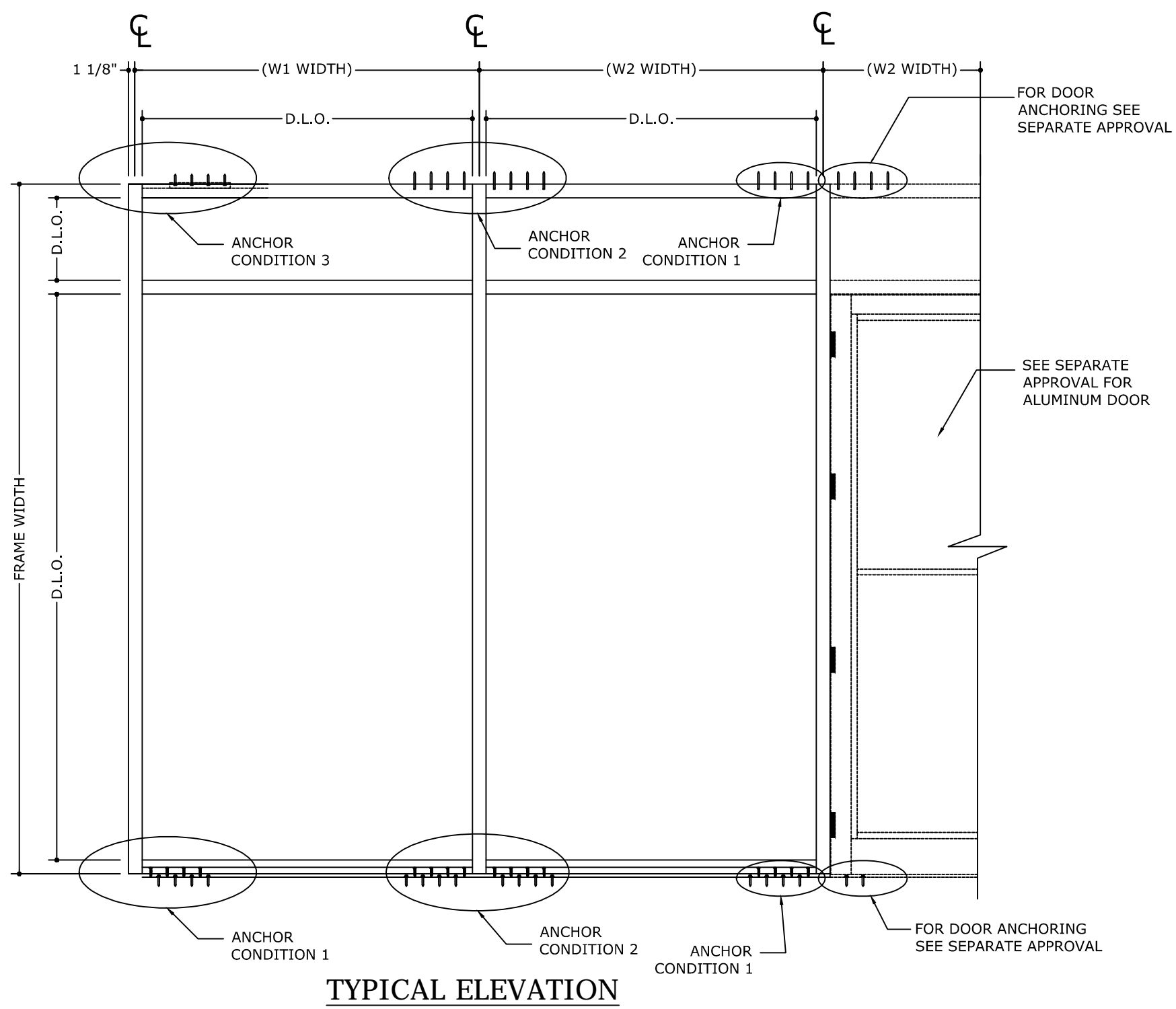
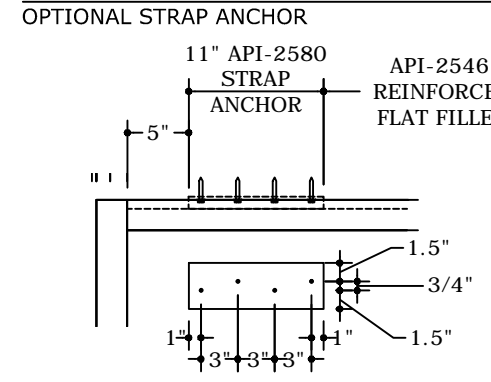


REMARKS	DRWN	CHKD	DATE
FBC 2017 UPDATE	LAO	FLB	10/11/17
FBC 2020 UPDATE	TAE	AJP	03/15/21



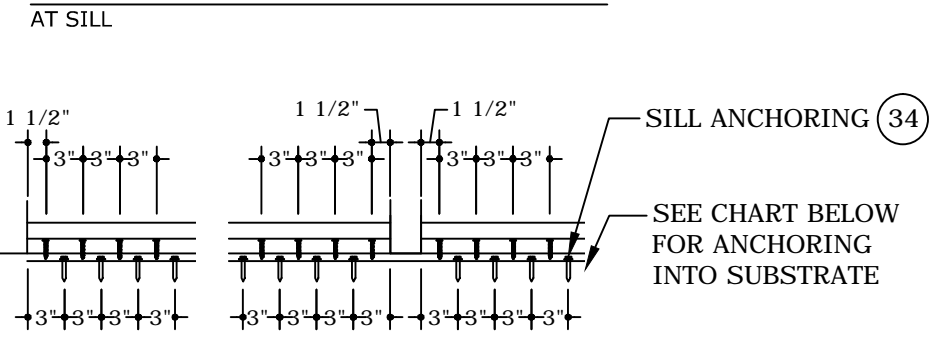
TYPICAL ELEVATION

ANCHOR SPACING LAYOUT



NOTE:
OPTIONAL STRAP-ANCHOR
APPROVED TO 50 PSF ONLY

ANCHOR SPACING LAYOUT



TYPICAL ANCHORS:

TYPE 'A'	
CONCRETE	DIRECTLY INTO CONCRETE (2846 PSI MIN) 1/4" DIA. ULTRACON BY 'DEWALT' (Fu=177 KSI, Fy=155 KSI) 1-3/4" MIN. EMBED INTO CONCRETE
TYPE 'B'	
GROUT FILLED CMU	DIRECTLY INTO GROUT FILLED BLOCK (ASTM C-90 MIN) 1/4" DIA. ULTRACON BY 'DEWALT' (Fu=177 KSI, Fy=155 KSI) 1-3/4" MIN. EMBEDMENT.
TYPE 'C'	
WOOD	INTO 2BY WOOD BUCKS OR WOOD STRUCTURES (SYP#2 G=0.55 MIN. 1 1/2" MIN. THICKNESS) 1/4" DIA. ULTRACON BY 'DEWALT' (Fu=177 KSI, Fy=155 KSI) 1-1/2" MIN. PENETRATION INTO WOOD
TYPE 'D'	
METAL	INTO METAL STRUCTURES (3 PITCHES PASS THE THREAD PLANE MIN.) STEEL: 18-18 GAGE STEEL MIN (Fy=36 KSI MIN) ALUMINUM: 1/8" THK MIN. (6063-T5 MIN) 1/4-20 DIA. DRIL-FLEX BY 'DEWALT' (GRADE 5 MIN) (STEEL IN CONTACT WITH ALUMINUM TO BE PLATED OR PAINTED)
TYPICAL EDGE DISTANCE INTO CONCRETE/HOLLOW BLOCK/GROUT FILLED BLOCK= 2-1/2" MIN. INTO WOOD STRUCTURE = 1" MIN. INTO METAL STRUCTURE = 3/4" MIN.	