



## ENGINEERING EXPRESS® PRODUCT EVALUATION REPORT

April 16, 2021

Application Number: FL#13597.1-R5  
EX Project Number: 21-38279  
  
Product Manufacturer: American Products, Inc  
Manufacturer Address: 13909 Lynmar Blvd.  
Tampa, FL 33626

Product Name & Description: Series 1800 Aluminum Storefront System

### ***Scope of Evaluation:***

This Product Evaluation Report is being issued in accordance with the requirements of the Florida Department of Business and Professional Regulation (Florida Building Commission) Rule Chapter 61G20-3.005, F.A.C., for statewide acceptance per Method 1 (d). The product noted above has been tested and/or evaluated as summarized herein to show compliance with standard ASCE 7-16 (ASD) and Florida Building Code Seventh Edition (2020) and is, for the purpose intended, at least equivalent to that required by the Standard and Code. Re-evaluation of this product shall be required following pertinent Florida Building Code or ASCE Standard modifications or revisions.

### ***Substantiating Data:***

- **PRODUCT EVALUATION DOCUMENTS**

EX Installation Drawing #21-38279 titled "Series 1800 Aluminum Storefront System", prepared by Engineering Express, Inc., signed & sealed by Frank Bennardo, P.E. is an integral part of this Evaluation Report, pages 1 through 3.

- **TEST REPORTS**

Uniform static structural performance has been tested in accordance with AAMA 501-05, ASTM E330-02, and ASTM E331-00 test standards per test report(s) #93330.01-401-44 signed and sealed by Joseph A Reed P.E. for Architectural Testing, Inc

- **STRUCTURAL ENGINEERING CALCULATIONS**

Structural engineering calculations have been prepared which evaluate the product based on comparative and/or rational analysis to qualify the following design criteria:

1. Anchor Spacing
2. Maximum Allowable Size/Pressure
3. Glass Capacity per ASTM E1300-04
4. Anchor Capacity

No 33% increase in allowable stress has been used in the design of this product.

American Products, Inc.: Series 1800 Aluminum Storefront System

### ***Impact Resistance:***

Large / Small Missile Impact Resistance has NOT been demonstrated as evidenced in previously listed test reports, and is not part of this certification.

### ***Wind Load Resistance***

This product has been designed to resist wind loads as indicated on its respective Product Evaluation Document (i.e. engineering document).

### ***Installation***

The product listed above shall be installed in strict compliance with the Product Evaluation Document (i.e. engineering document), along with all components noted therein.

The product components shall be of the material specified in the Product Evaluation Document (i.e. engineering document).

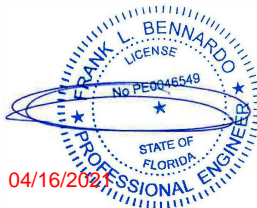
### ***Limitations & Conditions of Use:***

Use of each product shall be in strict accordance with its respective Product Evaluation Document (i.e. engineering document) as noted herein.

All supporting host structures shall be designed to resist all superimposed loads and shall be of a material listed in each product's respective anchor schedule. Host structure conditions which are not accounted for in each product's respective anchor schedule shall be designed for on a site-specific basis by a registered professional engineer.

All components which are permanently installed shall be protected against corrosion, contamination, and other such damage at all times. Any alteration to the respective Product Evaluation Document will invalidate it. This product has been designed for use outside of the High Velocity Hurricane Zone (NON-HVHZ).

Respectfully,



---

Frank Bennardo, PE  
**ENGINEERING EXPRESS®**  
PE#0046549 | Cert. Auth. 9885



April 16, 2021

Product Approval Administrator  
DBPR Codes and Standards  
2601 Blair Stone Road  
Tallahassee, FL 32399

Regarding: American Products, Inc  
Series 1800 Aluminum Storefront System – FL#13597.1– EX# 21-38279

To Whom It May Concern:

This office has reviewed test reports showing structural performance of the above-noted product. These test reports pertain to testing performed in accordance with the referenced standards in the table shown below. These noted standards are not adopted in the Florida Building Code Seventh Edition (2020); however, for the purpose of determining the performance of the product, this standard is equivalent to the corresponding standards, which are adopted standards in the above referenced building code.

Code Title	Tests Performed according to:	Current Equivalent Standard
Methods of Tests for Exterior Walls	AAMA 501- 05	AAMA 501-15
Test Method for Structural Performance of Exterior Windows, Curtain Walls, and Doors by Uniform Static Air Pressure Difference	ASTM E330 - 02	ASTM E330 -14
Test Method for Water Penetration of Exterior Windows, Skylights, Doors, and Curtain Walls by Uniform Static Air Pressure Difference	ASTM E331- 00	ASTM E330 - 09
Practice for Determining Load Resistance of Glass in Buildings	ASTM E1300 - 04	ASTM E1300 - 16

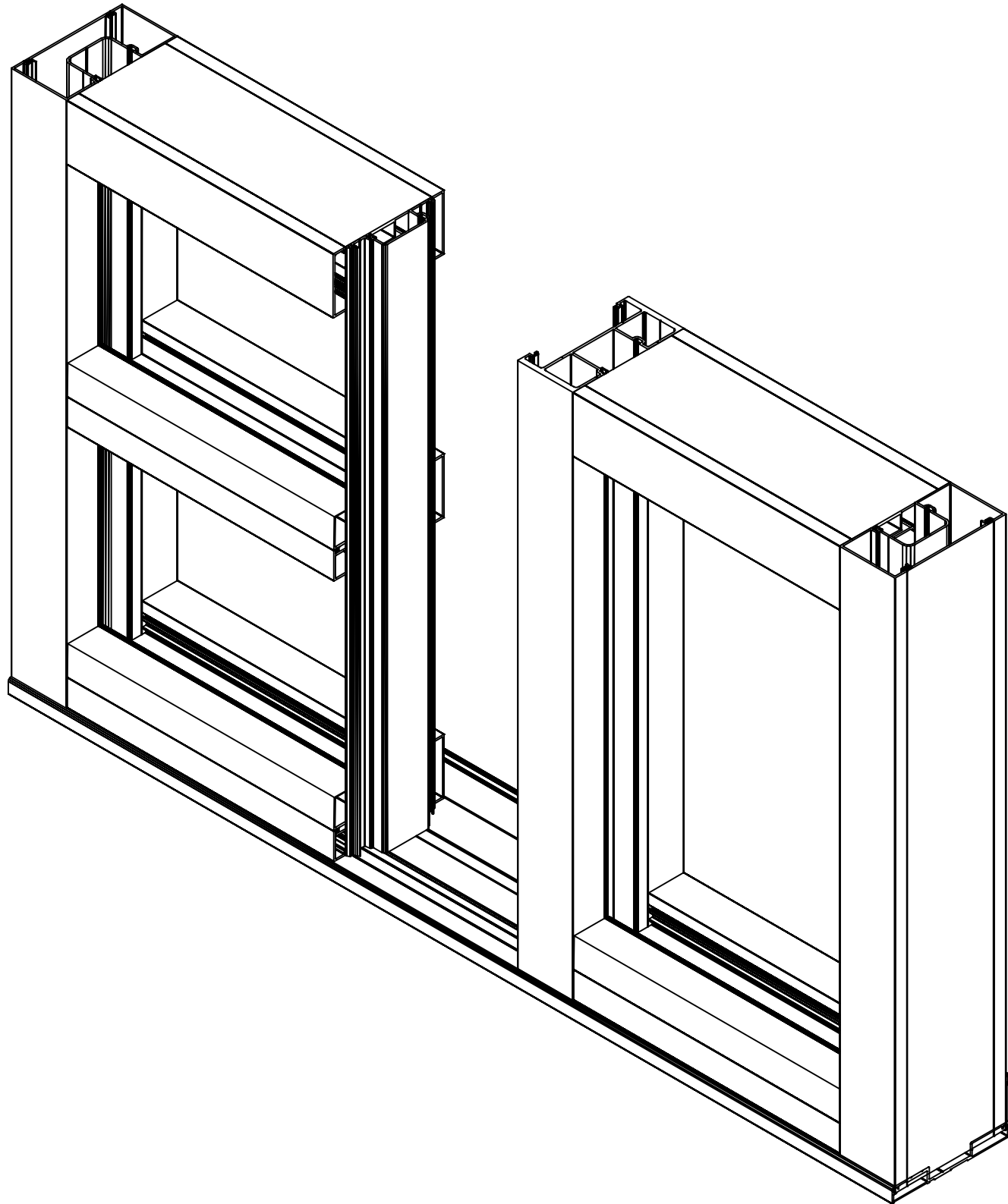
Respectfully,



Frank L. Bennardo, P.E.  
**ENGINEERING EXPRESS®**  
PE#0046549 | Cert. Auth. 9885

# AMERICAN PRODUCTS SERIES 2500 HVHZ IMPACT FLUSH GLAZE STOREFRONT SYSTEM DRY GLAZE

LARGE MISSILE IMPACT RESISTANT - MISSILE LEVEL "D"



## GENERAL NOTES

- THE SYSTEM DESCRIBED HEREIN HAS BEEN DESIGNED AND TESTED IN ACCORDANCE WITH THE FLORIDA BUILDING CODE SEVENTH EDITION (2020), FOR USE WITHIN AND OUTSIDE THE HIGH VELOCITY HURRICANE ZONE,
  - TAS 201-94 PER REQUIREMENTS OF THE FLORIDA BUILDING CODE
  - TAS 202-94 PER REQUIREMENTS OF THE FLORIDA BUILDING CODE
  - TAS 203-94 PER REQUIREMENTS OF THE FLORIDA BUILDING CODE
- NO 33-1/3% INCREASE IN ALLOWABLE STRESS HAS BEEN USED IN THE DESIGN OF THIS SYSTEM. WIND LOAD DURATION FACTOR Cd= 1.6 HAS BEEN USED FOR WOOD ANCHOR DESIGN.
- POSITIVE AND NEGATIVE DESIGN PRESSURES CALCULATED FOR USE WITH THIS SYSTEM SHALL BE DETERMINED BY OTHERS ON A JOB-SPECIFIC BASIS IN ACCORDANCE WITH THE GOVERNING CODE. SITE SPECIFIC LOAD WIND LOAD REQUIREMENTS SHALL BE DETERMINED IN ACCORDANCE WITH ASCE 16 AND THE FLORIDA BUILDING CODE SEVENTH EDITION (2020) BY SEPARATE ENGINEERING CERTIFICATION AND SHALL BE LESS THAN OR EQUAL TO THE POSITIVE OR NEGATIVE DESIGN PRESSURE CAPACITY VALUE LISTED HEREIN FOR ANY ASSEMBLY WITHIN THE LIMITATIONS STATED HEREIN.
- THE SYSTEM DETAILED HEREIN IS GENERIC AND DOES NOT PROVIDE INFORMATION FOR A SPECIFIC SITE. FOR SITE CONDITIONS DIFFERENT FROM THE CONDITIONS DETAILED HEREIN, A LICENSED ENGINEER OR REGISTERED ARCHITECT SHALL PREPARE SITE SPECIFIC DOCUMENTS FOR USE IN CONJUNCTION WITH THIS DOCUMENT.
- PERMIT HOLDER SHALL VERIFY THE ADEQUACY OF THE EXISTING STRUCTURE TO WITHSTAND SUPERIMPOSED LOADS. WOOD BUCKS (BY OTHERS) SHALL BE ANCHORED PROPERLY TO TRANSFER LOADS TO THE EXISTING STRUCTURE.
- ANCHOR EMBEDMENT SPECIFIED IS INTO HOST STRUCTURE MINIMUM.
- ALL EXTRUSIONS SHALL BE 6063-T5 ALUMINUM ALLOY, UNLESS NOTED OTHERWISE.
- EXTERIOR SEAM OF FRAME CORNERS, INSTALLATION SCREWS, AND GLAZING BEAD ENDS SHALL BE SEALED WITH SILICONE.
- ALL BOLTS & WASHERS SHALL BE ZINC COATED STEEL, GALVANIZED STEEL, OR STAINLESS STEEL WITH A MINIMUM TENSILE YIELD STRENGTH OF 60 KSI.
- ALL DISSIMILAR MATERIALS SHALL BE PAINTED OR PLATED AS PRESCRIBED IN THE FLORIDA BUILDING CODE.
- GLAZING ILLUSTRATED HEREIN UTILIZES SENTRYGLAS INTERLAYER BY KURARAY AMERICA INC.
- APPROVED FOR LARGE MISSILE IMPACT APPLICATIONS. SEE GLASS TYPES FOR ANY RESTRICTIONS
- TEST REPORTS: ARCHITECTURAL TESTING REPORT # B8049.01-401-18, B8050.01-401-18 & E9343.01-401-18
- GLAZING GASKETS TESTED PER ASTM C-864 & C-509 FOR DENSE EPDM.
- THIS SYSTEM MAY BE USED IN CONJUNCTION WITH AMERICAN PRODUCTS SERIES 2500 GLAZED ALUMINUM COMMERCIAL DOOR.
- CODE REQUIREMENTS FOR SAFEGUARDS MUST BE OBSERVED AND ARE NOT IN THIS CERTIFICATION.
- WINDOW TO SUBSTRATE WATER PROOFING IS NOT INCLUDED IN THIS DOCUMENT AND MUST BE ADDRESSED ON A SITE SPECIFIC BASIS. NOT BY AMERICAN PRODUCTS, INC.
- PRODUCT SHALL BE PERMANENTLY LABELED WITH A MINIMUM OF ONE LABEL PER SYSTEM CONTAINING THE FOLLOWING:  
AMERICAN PRODUCTS, INC.  
TAMPA, FLORIDA  
TAS 201/ 202/ 203  
APPROVED BY FLORIDA BUILDING COMMISSION

VISIT [ECALC.IO/38295](https://ecalcalc.io/38295)

FOR HELPFUL RESOURCES, SITE SPECIFIC JOB ORDERING & MORE INFORMATION ABOUT THIS PRODUCT & RELATED SERVICES

SCAN HERE:

FRANK BENNARDO, P.E.  
PE# 0046549 CA. 9885

04/16/2021

FL#15936.1

ENGINEERING  
EXPRESS®

CORPORATE OFFICE:  
160 SW 12th AVE, SUITE 106  
DEERFIELD BEACH, FL 33442  
(954) 354-0660 | (866) 396-9999  
TEAM@ENGINEERINGEXPRESS.COM  
ENGINEERINGEXPRESS.COM

AMERICAN PRODUCTS, INC.

13909 LYNMAR BLVD.  
TAMPA, FL 33626  
Phn. (813) 925-0144 / FAX: (813) 925-1414

SERIES 2500 FLUSH GLAZED STOREFRONT SYSTEM  
FLORIDA STATEWIDE APPROVAL  
FLORIDA BUILDING CODE SEVENTH EDITION (2020)

REMARKS	DRWN	CHKD	DATE
FBC 2017 UPDATE	LAO	FLB	10/11/17
FBC 2020 UPDATE	TAE	AJP	03/15/21

COPYRIGHT ENGINEERING EXPRESS®

21-38295

SCALE: NTS UNLESS NOTED

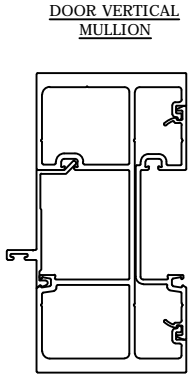
01

OF 1



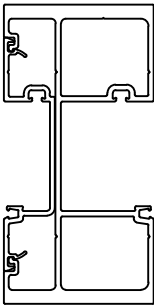
MULLION LOADING CAPACITY (PSF) - WITH OR WITHOUT HORIZONTALS								
NOMINAL DIMS			NOMINAL DIMS			NOMINAL DIMS		
WIDTH (W)	FRAME HEIGHT	+/- P.S.F	WIDTH (W)	FRAME HEIGHT	+/- P.S.F	WIDTH (W)	FRAME HEIGHT	+/- P.S.F
30"	60"	60	30"	96"	60	30"	126"	60
36"		60	36"		60	36"		60
42"		60	42"		60	42"		60
48"		60	48"		60	48"		60
54"		60	54"		60	54"		60
62 1/2"		60	62 1/2"		60	62 1/2"		60
66"		57	66"		57	66"		56
72"		54	72"		52	72"		52
78"		51	78" *		48	78" *		48
84"		49	84" *		45	84" *		44
90"		47	90" **		42	90" **		41
96"		45	96" **		39	96" **		39
30"	72"	60	30"	108"	60	30"		60
36"		60	36"		60	36"		60
42"		60	42"		60	42"		60
48"		60	48"		60	48"		60
54"		60	54"		60	54"		60
62 1/2"		60	62 1/2"		60	62 1/2"		60
66"		57	66"		57	66"		57
72"		52	72"		52	72"		52
78" *		48	78" *		48	78" *		48
84" *		45	84" *		45	84" *		45
90" **		43	90" **		42	90" **		42
96" **		42	96" **		39	96" **		39
30"	84"	60	30"	120"	60	30"		60
36"		60	36"		60	36"		60
42"		60	42"		60	42"		60
48"		60	48"		60	48"		60
54"		60	54"		60	54"		60
62 1/2"		60	62 1/2"		60	62 1/2"		60
66"		57	66"		57	66"		57
72"		52	72"		52	72"		52
78" *		48	78" *		48	78" *		48
84" *		45	84" *		45	84" *		45
90" **		42	90" **		42	90" **		42
96" **		40	96" **		39	96" **		39

\* HORIZONTAL TO HORIZONTAL D.L.O. 48" MAX.  
\*\* HORIZONTAL TO HORIZONTAL D.L.O. 36" MAX.  
NOTE: FOR D.L.O.'S GREATER THAN 60" HORIZONTAL MULLION REINFORCEMENT IS REQUIRED. SEE DETAIL 2A/6

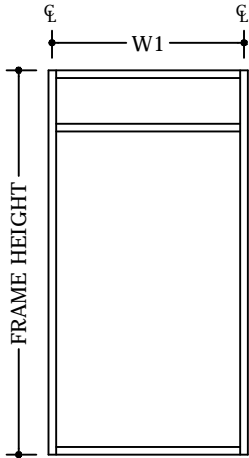


- 7A OR 7 API-2564  
HEAVY VERTICAL
- 10 API-2582  
SNAP IN DOOR STOP
- 21 API-2511  
SHALLOW POCKET

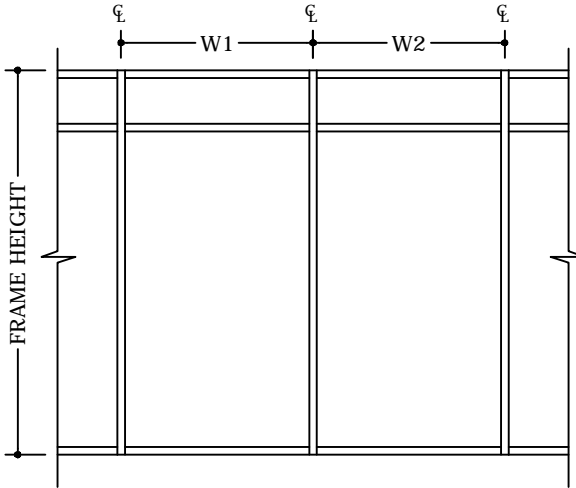
STOREFRONT VERTICAL MULLION



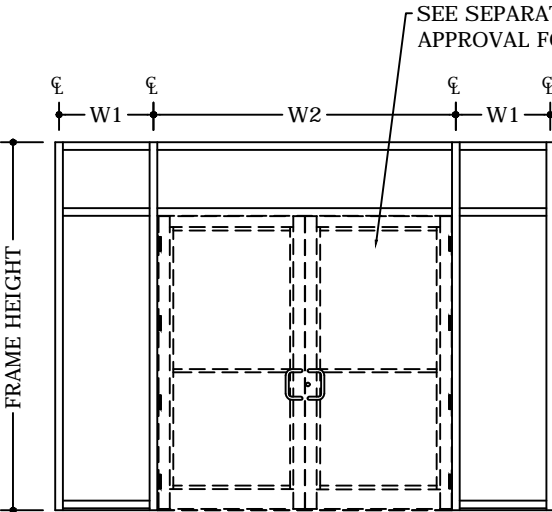
- 7A OR 7 API-2564  
HEAVY VERTICAL
- 21 API-2511  
SHALLOW POCKET



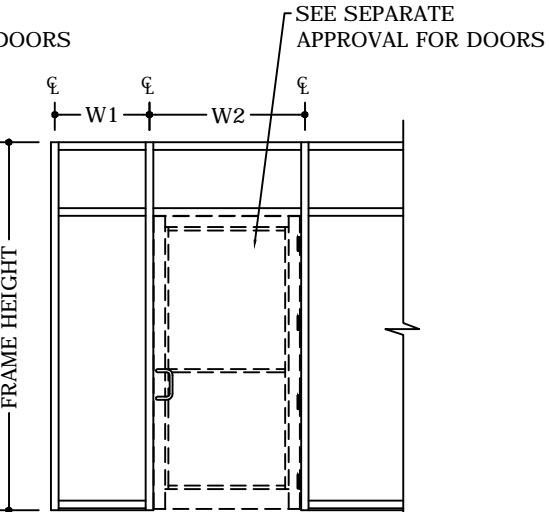
W1 / 2 = WIDTH (W)



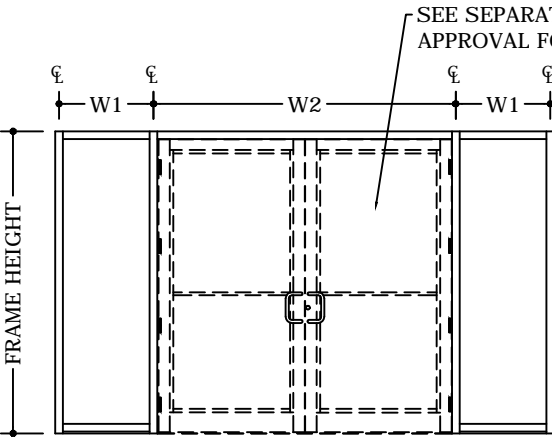
(W1 + W2) / 2 = WIDTH (W)



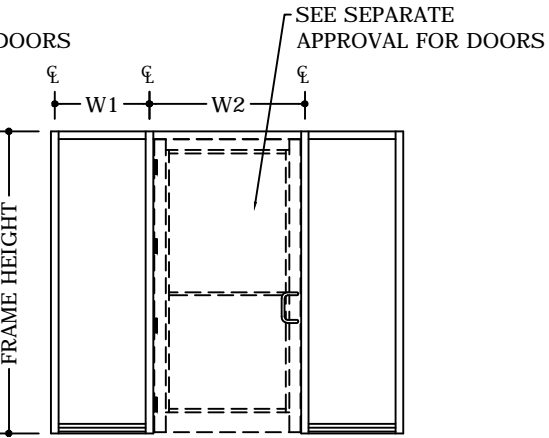
(W1 + W2) / 2 = WIDTH (W)



(W1 + W2) / 2 = WIDTH (W)



W1 / 2 + W2 / 4 = WIDTH (W)



(W1 + W2) / 2 = WIDTH (W)

FRANK BENNARDO, P.E.  
PE# 0046549 CA. 9885

04/16/2021

FL#15936.1

ENGINEERING EXPRESS

CORPORATE OFFICE:  
160 SW 12th AVE, SUITE 106  
DEERFIELD BEACH, FL 33442  
(954) 354-0660 | (866) 396-9999  
TEAM@ENGINEERINGEXPRESS.COM  
ENGINEERINGEXPRESS.COM

AMERICAN PRODUCTS, INC.

13909 LYNMAR BLVD.  
TAMPA, FL 33626  
Phn. (813) 925-0144 / FAX: (813) 925-1414

SERIES 2500 FLUSH GLAZED STOREFRONT SYSTEM  
FLORIDA STATEWIDE APPROVAL  
FLORIDA BUILDING CODE SEVENTH EDITION (2020)

REMARKS	DRWN	CHKD	DATE
FBC 2017 UPDATE	LAO	FLB	10/11/17
FBC 2020 UPDATE	TAE	AJP	03/15/21

COPYRIGHT ENGINEERING EXPRESS®

21-38295

SCALE: NTS UNLESS NOTED

03

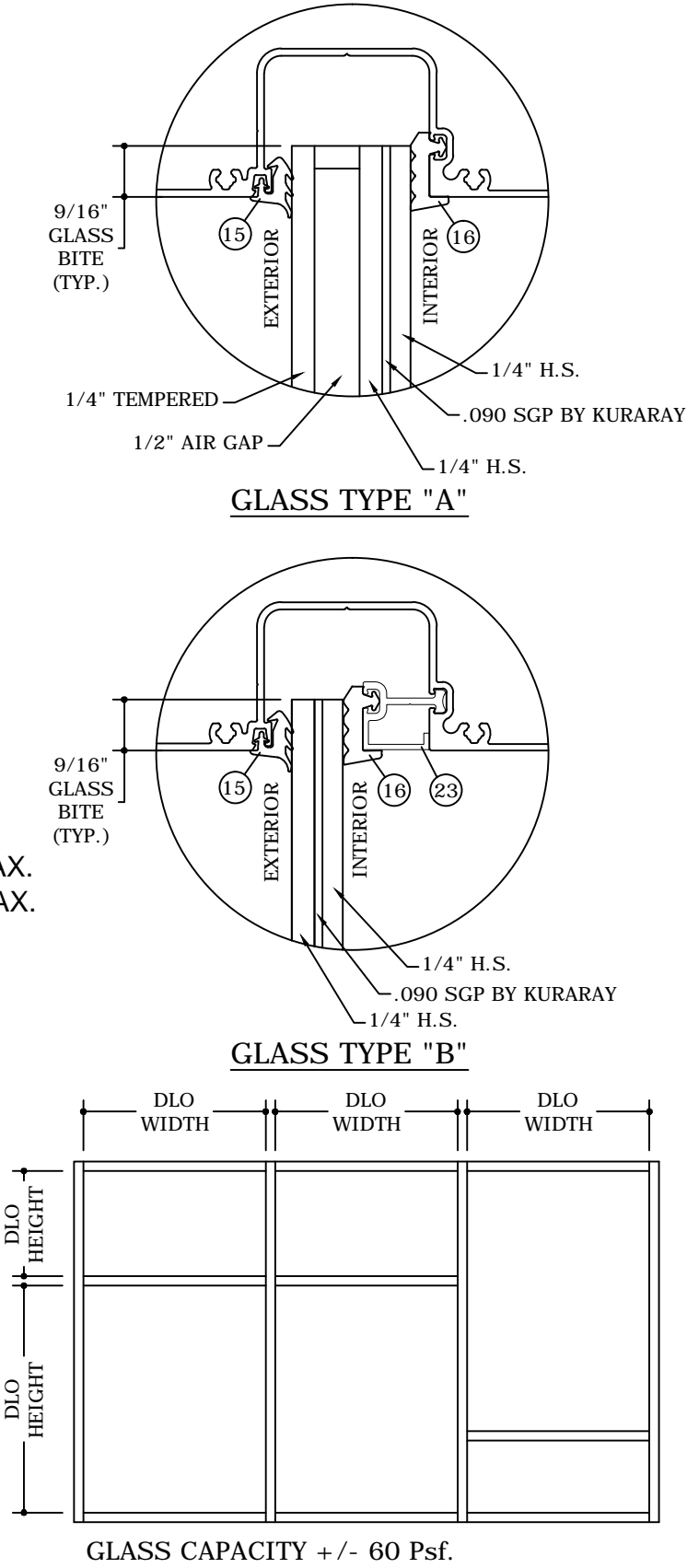


STOREFRONT GLASS TYPES

DRY GLAZED

GLASS LOADING CAPACITY (PSF)							
NOMINAL DIMS		GLASS TYPE		NOMINAL DIMS		GLASS TYPE	
DLO WIDTH	DLO HEIGHT	TYPE A +/- P.S.F	TYPE B +/- P.S.F	DLO WIDTH	DLO HEIGHT	TYPE A +/- P.S.F	TYPE B +/- P.S.F
30"	60"	60	50	30"	96"	60	50
36"		60	50	36"		60	50
42"		60	50	42"		60	50
48"		60	50	48"		60	50
54"		60	50	54"		60	50
62 1/2"		60	50	62 1/2"		60	50
66"		60	50	66"		60	50
72"		60	50	72"		X	X
78"		60	50	78" *		X	X
84"		60	50	84" *		X	X
90"	72"	60	50	90" **	108"	X	X
96"		60	50	96" **		X	X
30"		60	50	30"		60	50
36"		60	50	36"		60	50
42"		60	50	42"		60	50
48"		60	50	48"		60	50
54"		60	50	54"		60	50
62 1/2"		60	50	62 1/2"		60	50
66"		60	50	66"		X	X
72"		60	50	72"		X	X
78" *	84"	60	50	78" *	120"	X	X
84" *		60	50	84" *		X	X
90" **		60	50	90" **		X	X
96" **		X	X	96" **		X	X
30"		60	50	30"		60	50
36"		60	50	36"		60	50
42"		60	50	42"		60	50
48"		60	50	48"		60	50
54"		60	50	54"		60	50
62 1/2"		60	50	62 1/2"		X	X
66"	96"	60	50	66"		X	X
72"		60	50	72"		X	X
78" *		60	50	78" *		X	X
84" *		X	X	84" *		X	X
90" **		X	X	90" **		X	X
96" **		X	X	96" **		X	X

\* HORIZONTAL TO HORIZONTAL D.L.O. 48" MAX.  
\*\* HORIZONTAL TO HORIZONTAL D.L.O. 36" MAX.  
NOTE: FOR D.L.O.'S GREATER THAN 60"  
HORIZONTAL MULLION REINFORCEMENT IS  
REQUIRED. SEE DETAIL 2A/6



NOTE:  
GLASS CAPACITY ON THIS SHEET IS BASED ON ASTM E1300-09 (3 SEC GUST)

THE PERIMETER SEAL SYSTEM FOR THE INSULATED GLASS WAS COMPRISED OF  
ALUMINUM REINFORCED BUTYL AIR SPACER.

FRANK BENNARDO, P.E.  
PE# 0046549 CA. 9885

04/16/2021

FL#15936.1

ENGINEERING  
EXPRESS®

CORPORATE OFFICE:  
160 SW 12th AVE, SUITE 106  
DEERFIELD BEACH, FL 33442  
(954) 354-0660 | (866) 396-9999  
TEAM@ENGINEERINGEXPRESS.COM  
ENGINEERINGEXPRESS.COM

AMERICAN PRODUCTS, INC.

13909 LYNMAR BLVD.  
TAMPA, FL 33626  
Phn. (813) 925-0144 / FAX: (813) 925-1414

SERIES 2500 FLUSH GLAZED STOREFRONT SYSTEM  
FLORIDA STATEWIDE APPROVAL  
FLORIDA BUILDING CODE SEVENTH EDITION (2020)

REMARKS	DRWN	CHKD	DATE
FBC 2017 UPDATE	LAO	FLB	10/11/17
FBC 2020 UPDATE	TAE	AJP	03/15/21

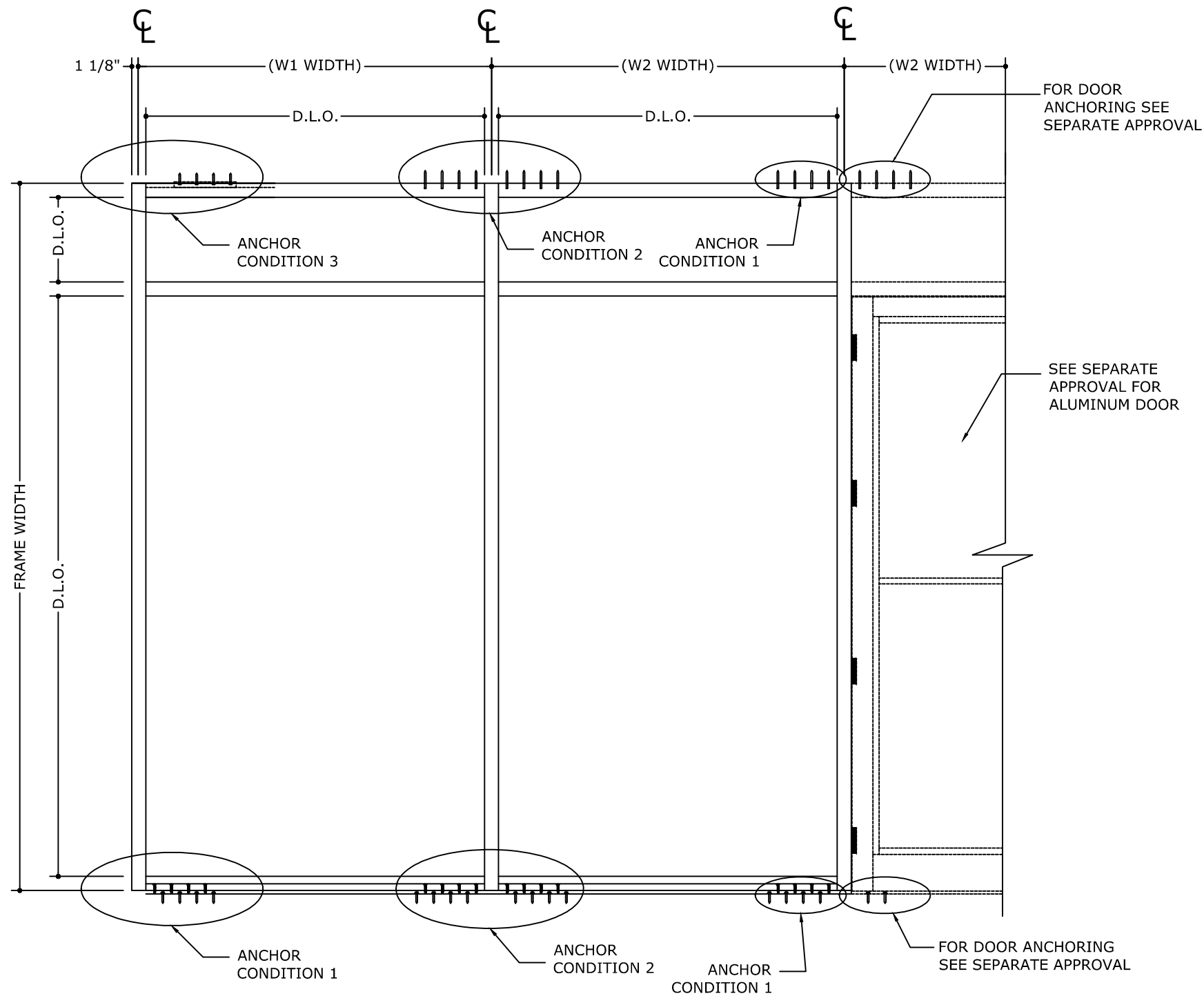
COPYRIGHT ENGINEERING EXPRESS®

21-38295

SCALE: NTS UNLESS NOTED

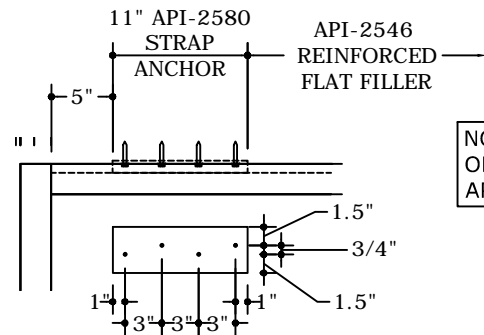
04

C:\Users\Joe\Downloads\21-38295 Series 2500 FL15936.1.dwg 04/16/2021 - 11:26am Joe

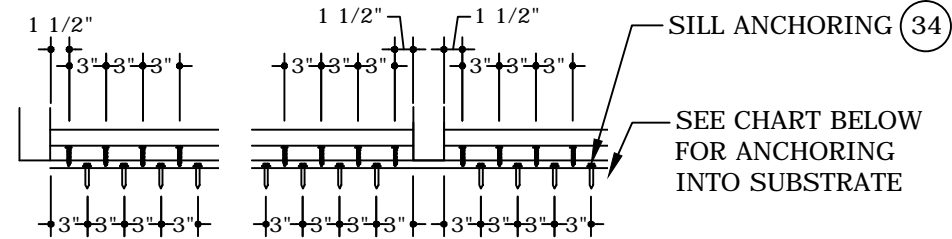


TYPICAL ELEVATION

ANCHOR SPACING LAYOUT  
OPTIONAL STRAP ANCHOR



ANCHOR SPACING LAYOUT  
AT SILL



TYPICAL ANCHORS:

TYPE 'A'	
CONCRETE	<u>DIRECTLY INTO CONCRETE</u> (2846 PSI MIN) 1/4" DIA. ULTRACON BY 'DEWALT' (Fu=177 KSI, Fy=155 KSI) 1-3/4" MIN. EMBED INTO CONCRETE
TYPE 'B'	
GROUT FILLED CMU	<u>DIRECTLY INTO GROUT FILLED BLOCK</u> (ASTM C-90 MIN) 1/4" DIA. ULTRACON BY 'DEWALT' (Fu=177 KSI, Fy=155 KSI) 1-3/4" MIN. EMBEDMENT.
TYPE 'C'	
WOOD	<u>INTO 2BY WOOD BUCKS OR WOOD STRUCTURES</u> (SYP#2 G=0.55 MIN. 1 1/2" MIN. THICKNESS) 1/4" DIA. ULTRACON BY 'DEWALT' (Fu=177 KSI, Fy=155 KSI) 1-1/2" MIN. PENETRATION INTO WOOD
TYPE 'D'	
METAL	<u>INTO METAL STRUCTURES</u> (3 PITCHES PASS THE THREAD PLANE MIN.) STEEL: 18-18 GAGE STEEL MIN (Fy=36 KSI MIN) ALUMINUM: 1/8" THK MIN. (6063-T5 MIN) 1/4-20 DIA. DRIL-FLEX BY 'DEWALT' (GRADE 5 MIN) (STEEL IN CONTACT WITH ALUMINUM TO BE PLATED OR PAINTED)
TYPICAL EDGE DISTANCE INTO CONCRETE/HOLLOW BLOCK/GROUT FILLED BLOCK= 2-1/2" MIN. INTO WOOD STRUCTURE = 1" MIN. INTO METAL STRUCTURE = 3/4" MIN.	

FL#15936.1

**ENGINEERING EXPRESS®**

CORPORATE OFFICE:  
160 SW 12th AVE, SUITE 106  
DEERFIELD BEACH, FL 33442  
(954) 354-0660 | (866) 396-9999  
TEAM@ENGINEERINGEXPRESS.COM  
ENGINEERINGEXPRESS.COM

AMERICAN PRODUCTS, INC.

13909 LYNMAR BLVD.  
TAMPA, FL 33626  
Phn. (813) 925-0144 / FAX: (813) 925-1414  
SERIES 2500 FLUSH GLAZED STOREFRONT SYSTEM  
FLORIDA STATEWIDE APPROVAL  
FLORIDA BUILDING CODE SEVENTH EDITION (2020)

REMARKS	DRWN	CHKD	DATE
FBC 2017 UPDATE	LAO	FLB	10/11/17
FBC 2020 UPDATE	TAE	AJP	03/15/21

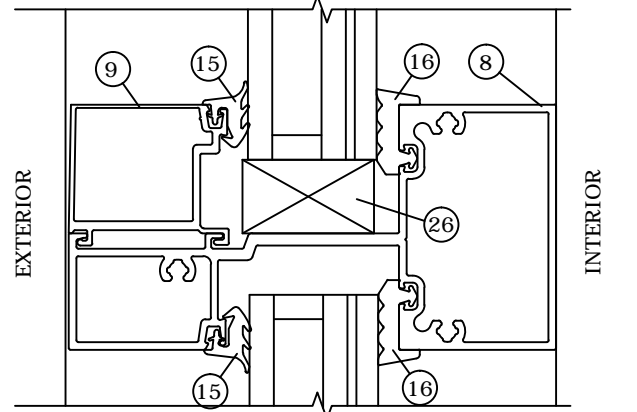
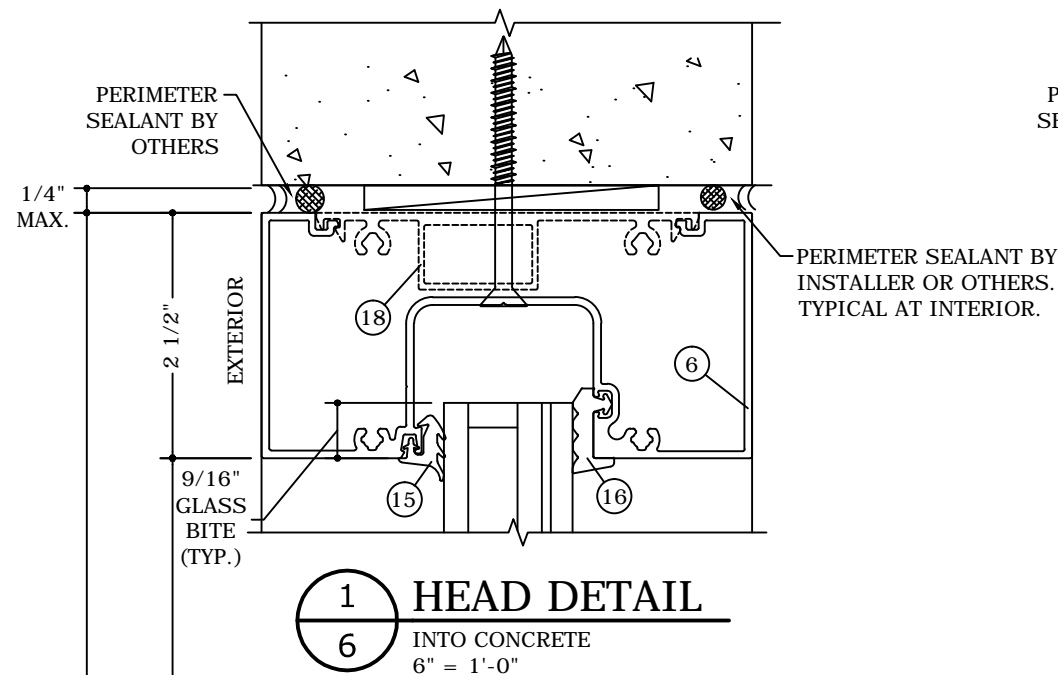
COPYRIGHT ENGINEERING EXPRESS®

21-38295

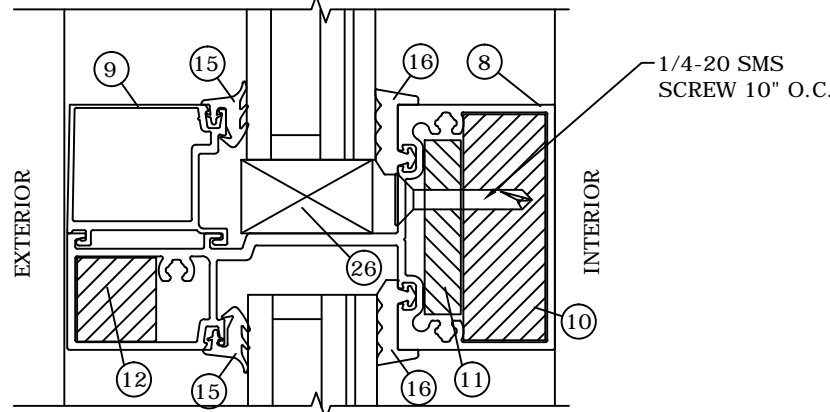
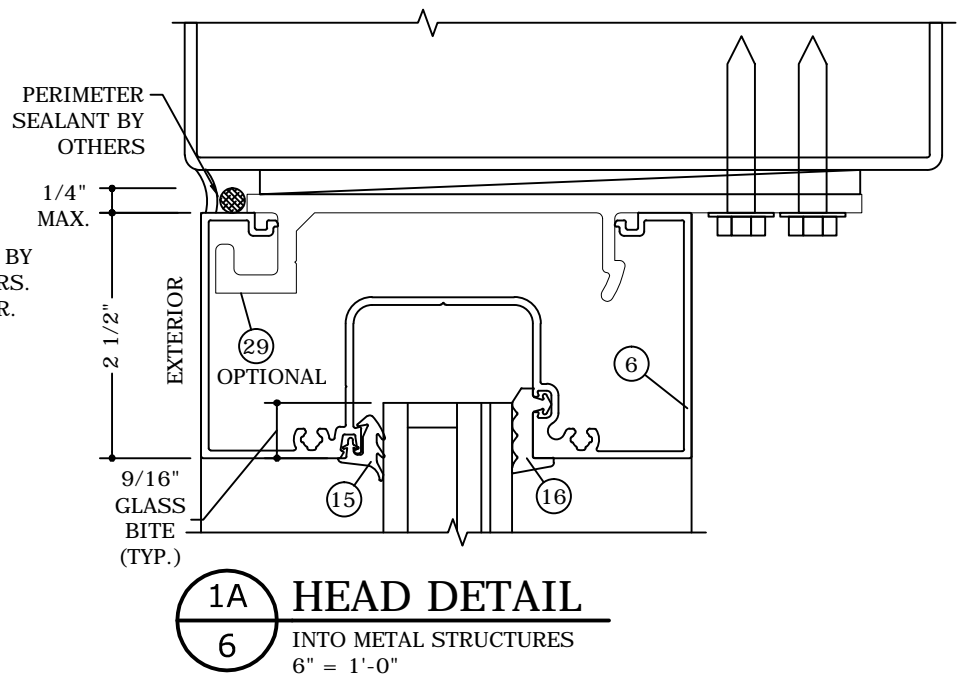
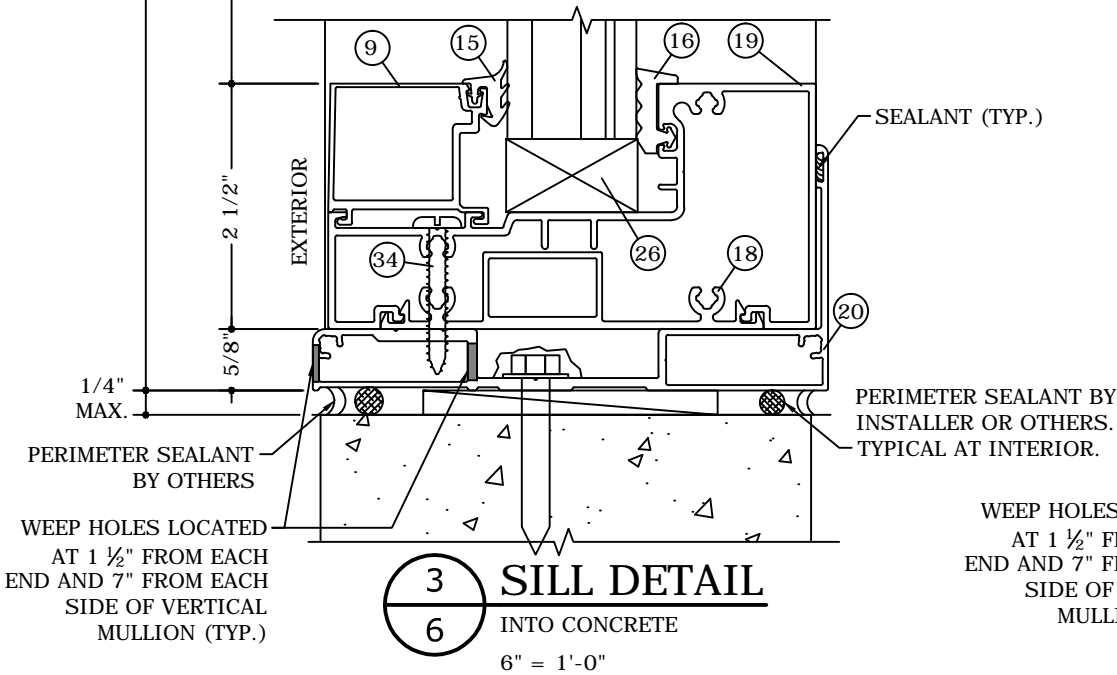
SCALE: NTS UNLESS NOTED



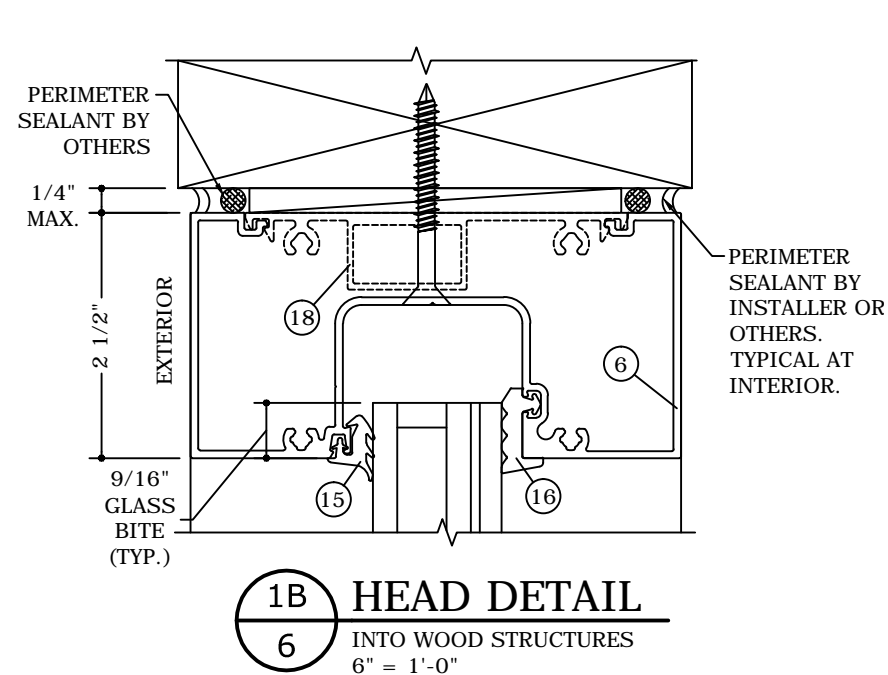
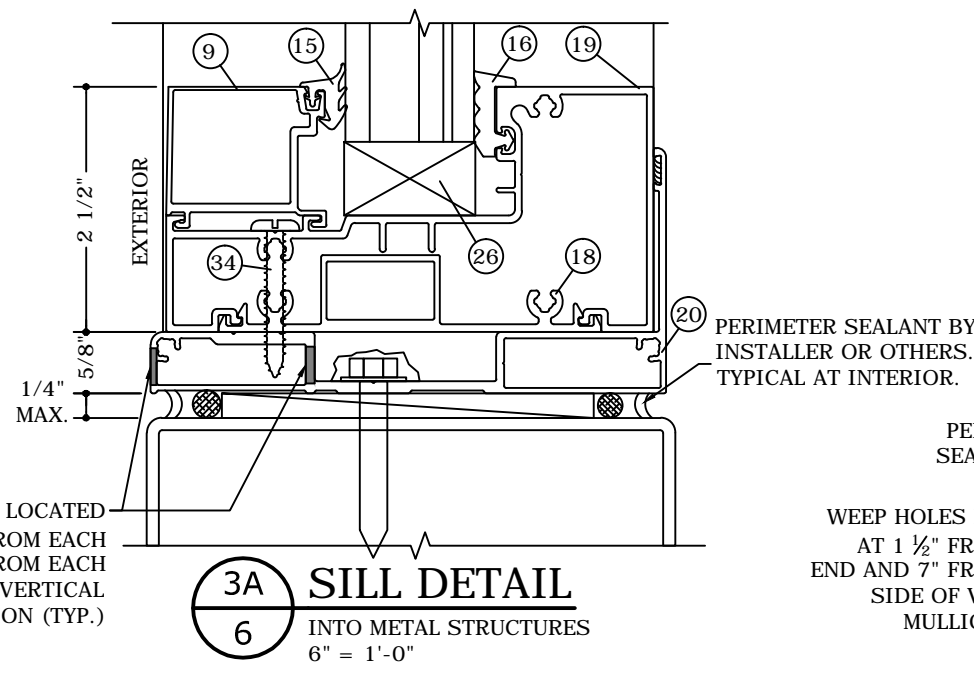
C:\Users\Joe\Downloads\21-38295 Series 2500 FL15936.1.dwg  
04/16/2021 - 11:26am Joe



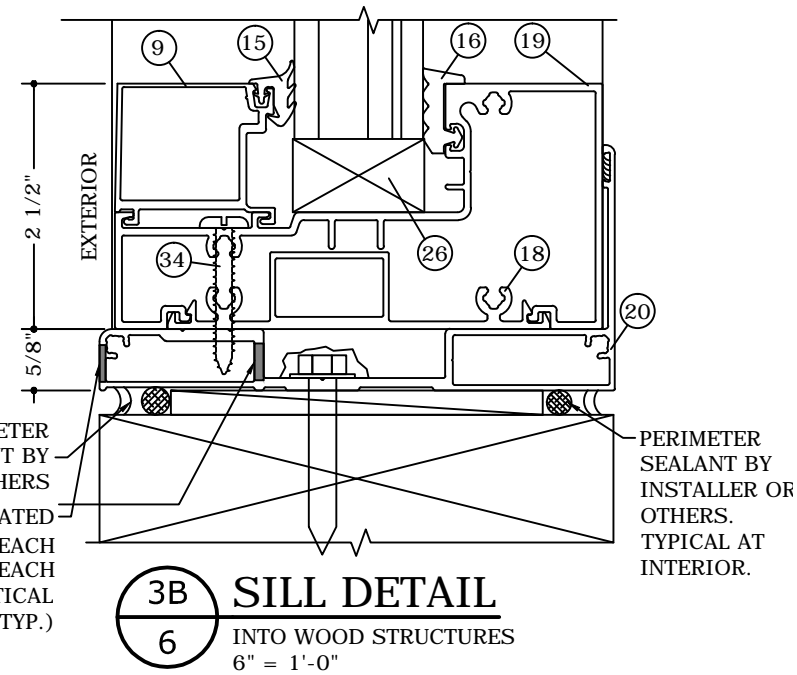
**2**  
**6** HORIZONTAL INTERMEDIATE DETAIL  
6" = 1'-0" UP TO 60" D.L.O. WIDTH



**2A**  
**6** REINFORCED HORIZONTAL INTERMEDIATE DETAIL  
6" = 1'-0" GREATER THAN 60" D.L.O. WIDTH. 96" D.L.O. MAX.



- NOTE:
- ANCHORS PER ANCHOR SCHEDULE ON SHEET 5. SEE TYPICAL ELEVATION ON SHEET 5 FOR SPACING.
  - WATER DIVERTERS TO BE LOCATED AT EACH END OF HORIZONTAL MULLION.
  - OPEN GLAZING POCKET ENDS LOCATED AT EACH END OF SILL AND HORIZONTAL MULLION.



FRANK BENNARDO, P.E.  
PE# 0046549 CA. 9885

FL#15936.1

04/16/2021

**ENGINEERING EXPRESS**

CORPORATE OFFICE:  
160 SW 12th AVE, SUITE 106  
DEERFIELD BEACH, FL 33442  
(954) 354-0660 | (866) 396-9999  
TEAM@ENGINEERINGEXPRESS.COM  
ENGINEERINGEXPRESS.COM

**AMERICAN PRODUCTS, INC.**  
13909 LYNMAR BLVD.  
TAMPA, FL 33626  
Phn. (813) 925-0144 / FAX: (813) 925-1414  
SERIES 2500 FLUSH GLAZED STOREFRONT SYSTEM  
FLORIDA STATEWIDE APPROVAL  
FLORIDA BUILDING CODE SEVENTH EDITION (2020)

REMARKS	DRWN	CHKD	DATE
FBC 2017 UPDATE	LAO	FLB	10/11/17
FBC 2020 UPDATE	TAE	AJP	03/15/21

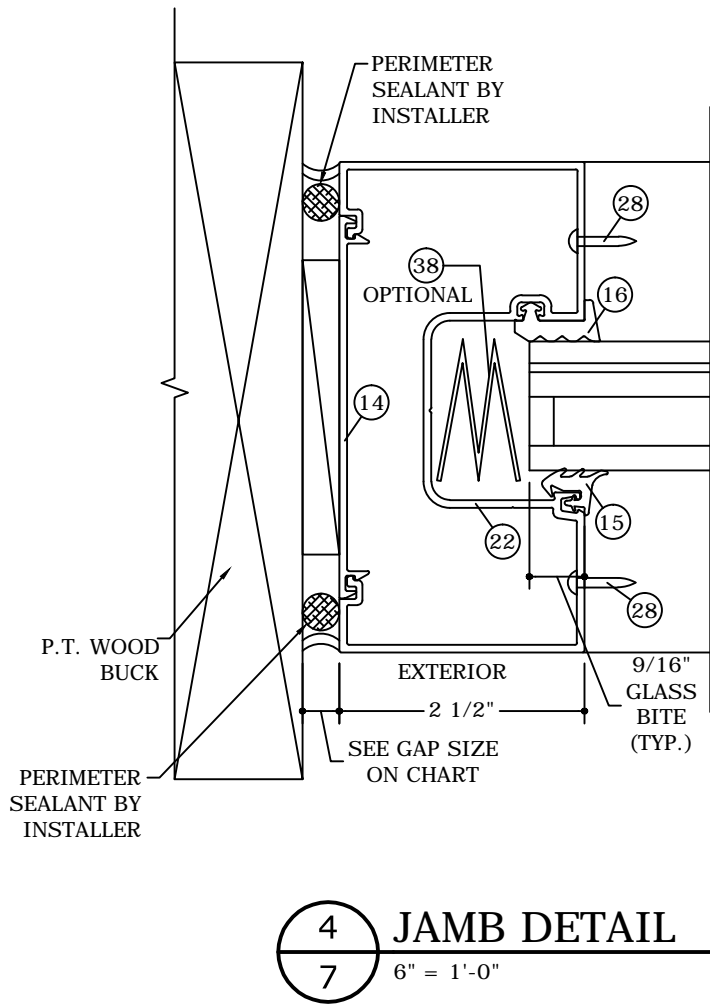
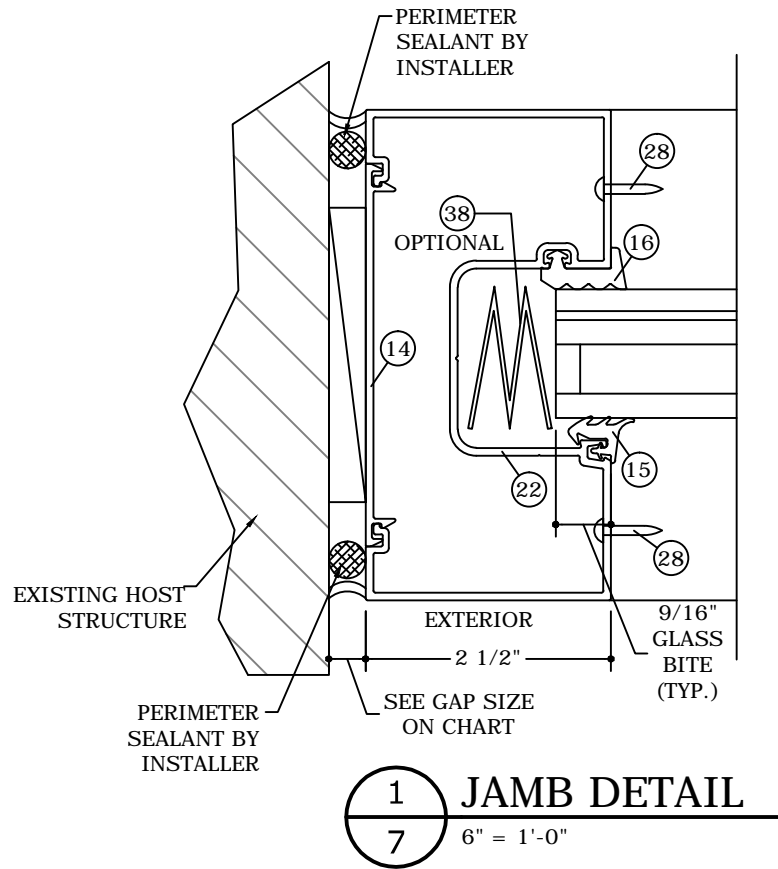
COPYRIGHT ENGINEERING EXPRESS®

21-38295

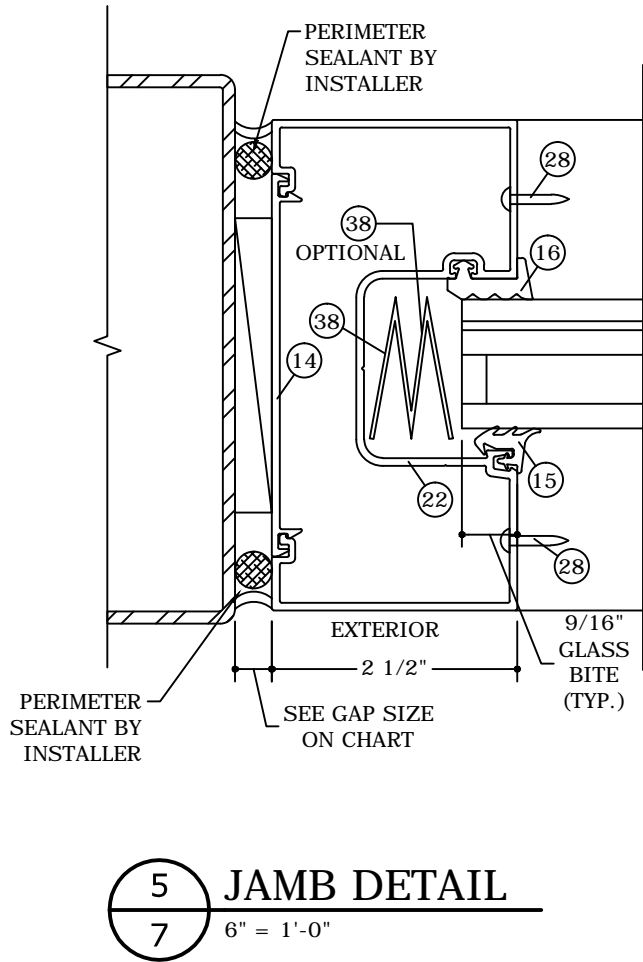
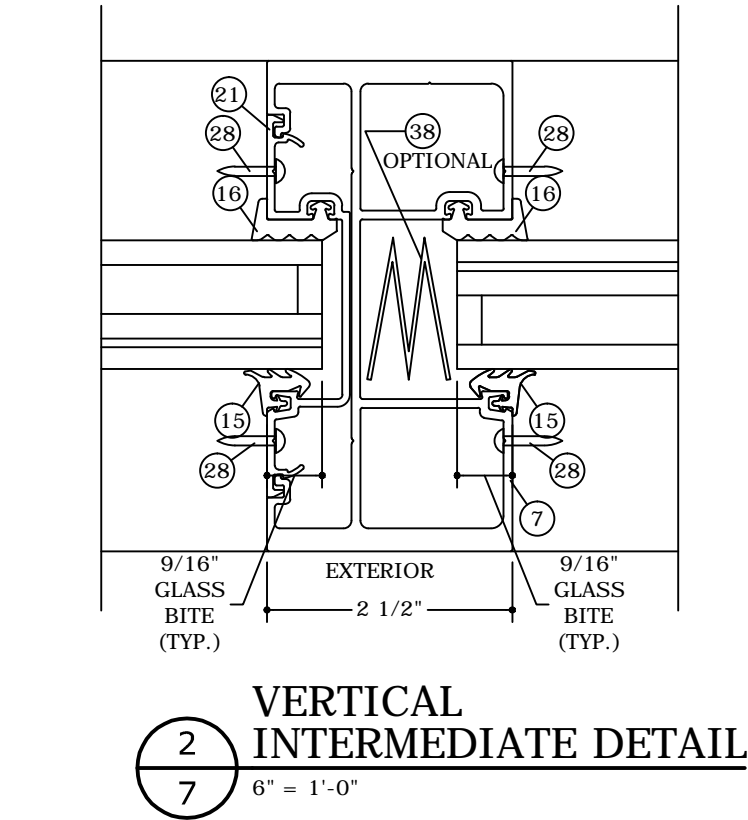
SCALE: NTS UNLESS NOTED

06

C:\Users\Joe\Downloads\21-38295 Series 2500 FL15936.1.dwg 04/16/2021 - 11:26am Joe



MAX. FRAME HEIGHT	GAP	
	MIN.	MAX.
60"	1/4"	3/4"
72"	3/8"	3/4"
84"	7/16"	3/4"
96"	1/2"	3/4"
108"	9/16"	3/4"
120"	5/8"	3/4"
126"	3/4"	3/4"



FRANK BENNARDO, P.E.  
PE# 0046549 CA. 9885

04/16/2021

FL#15936.1

ENGINEERING  
EXPRESS®

CORPORATE OFFICE:  
160 SW 12th AVE, SUITE 106  
DEERFIELD BEACH, FL 33442  
(954) 354-0660 | (866) 396-9999  
TEAM@ENGINEERINGEXPRESS.COM  
ENGINEERINGEXPRESS.COM

AMERICAN PRODUCTS, INC.

13909 LYNMAR BLVD.  
TAMPA, FL 33626  
Phn. (813) 925-0144 / FAX: (813) 925-1414

SERIES 2500 FLUSH GLAZED STOREFRONT SYSTEM  
FLORIDA STATEWIDE APPROVAL  
FLORIDA BUILDING CODE SEVENTH EDITION (2020)

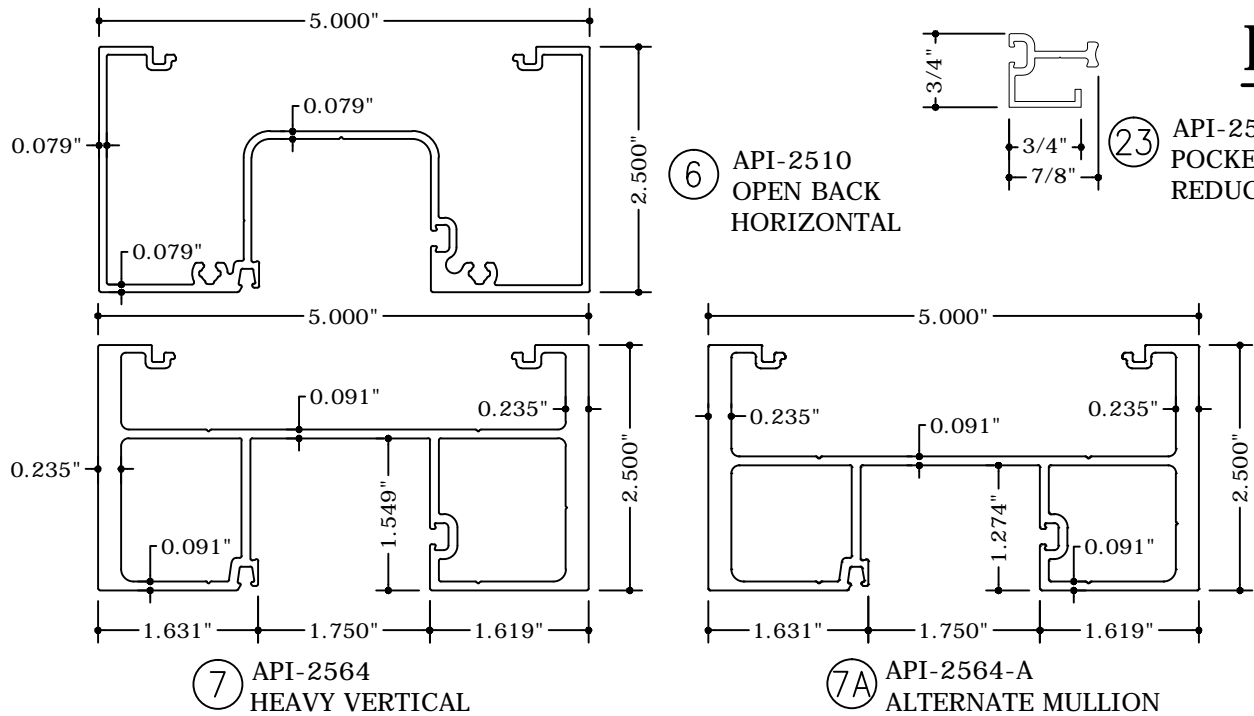
REMARKS	DRWN	CHKD	DATE
FBC 2017 UPDATE	LAO	FLB	10/11/17
FBC 2020 UPDATE	TAE	AJP	03/15/21

COPYRIGHT ENGINEERING EXPRESS®

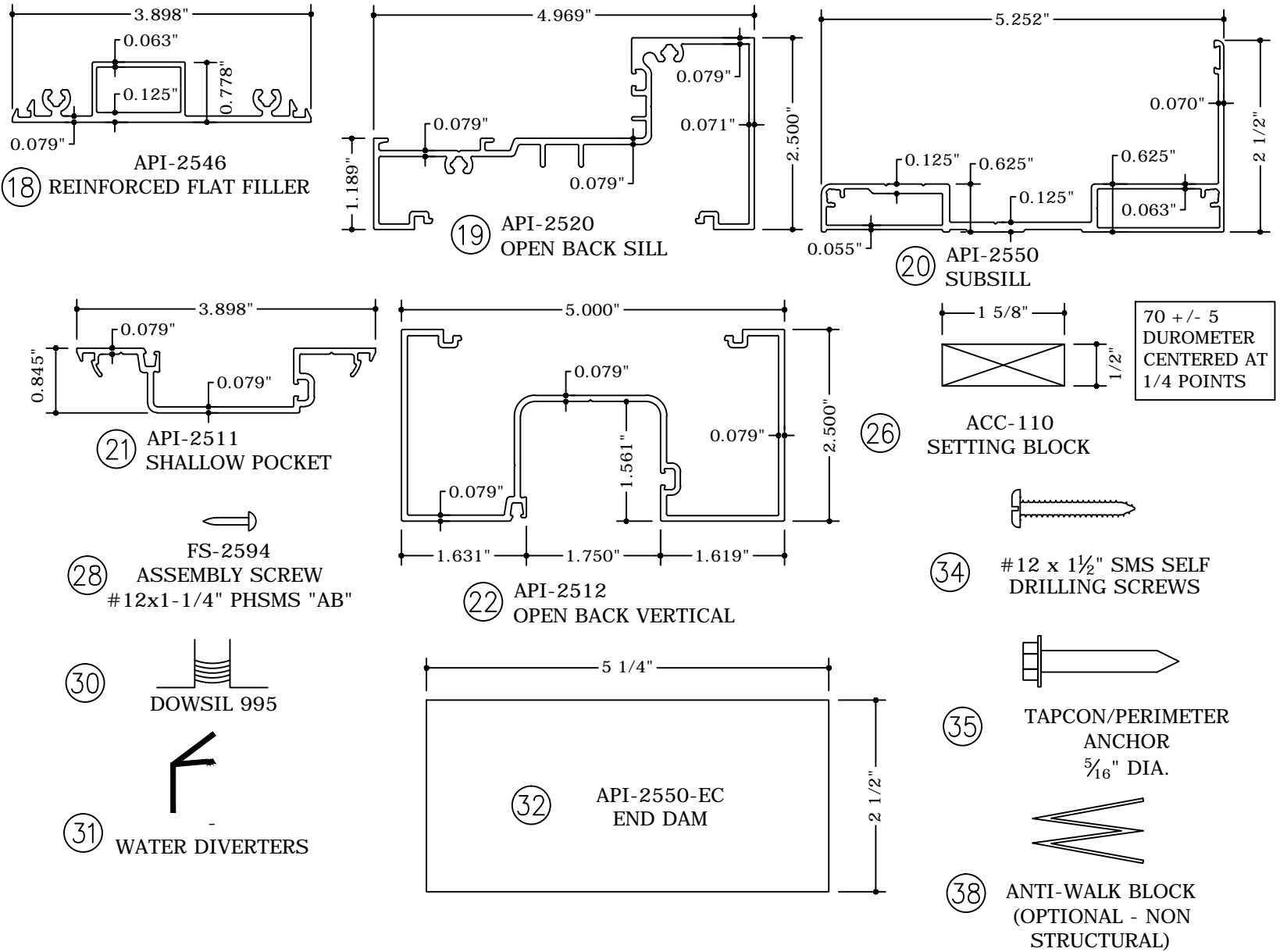
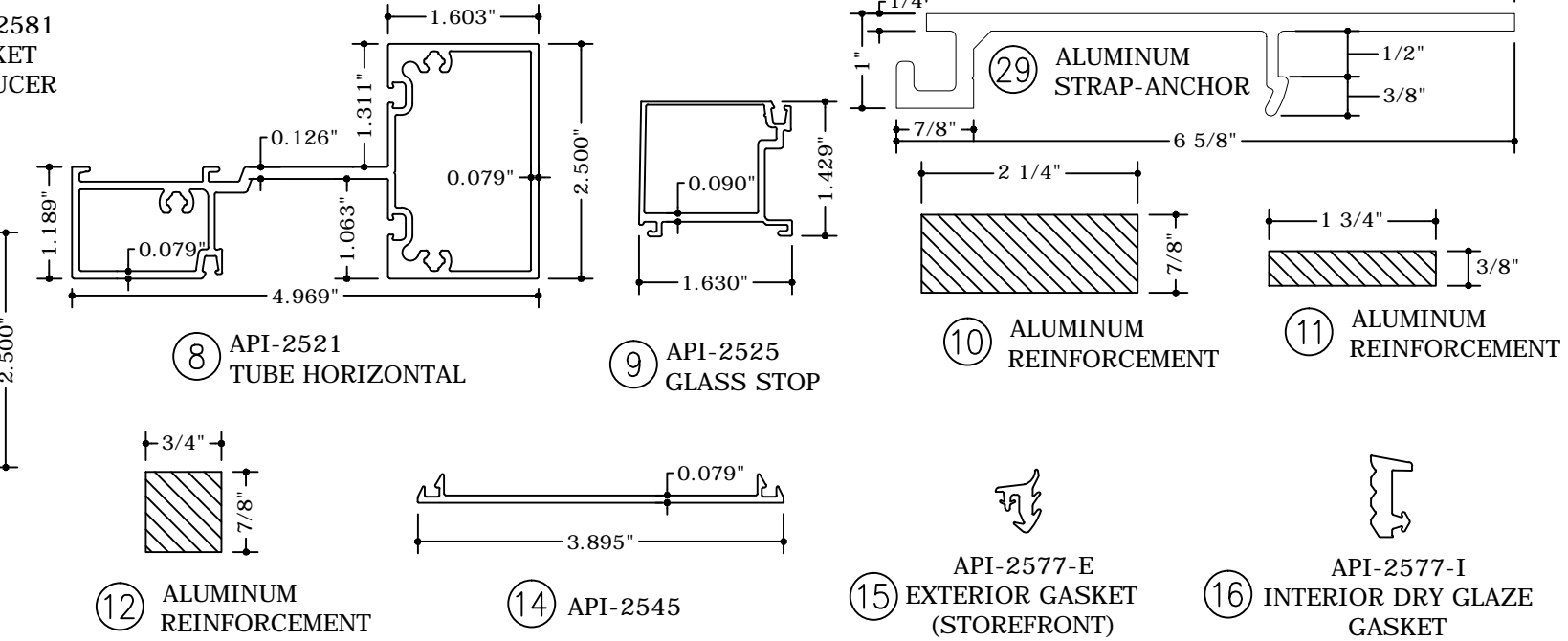
21-38295

SCALE: NTS UNLESS NOTED

07



## PARTS LIST



Bill of Materials			
	Part	Material	Part No.
1-5	DOOR PART - NOT USED	-	-
6	OPEN BACK HORIZONTAL	ALU 6063-T6	API-2510
7	HEAVY VERTICAL	ALU 6063-T6	API-2564
7A	OPTIONAL HEAVY VERTICAL	ALU 6063-T6	API-2564-A
8	TUBE HORIZONTAL	ALU 6063-T6	API-2521
9	GLASS STOP	ALU 6063-T6	API-2525
10	ALUMINUM REINFORCEMENT	ALU 6063-T6	
11	ALUMINUM REINFORCEMENT	ALU 6063-T6	
12	ALUMINUM REINFORCEMENT	ALU 6063-T6	
13	DOOR PART - NOT USED	-	-
14	FLAT FILLER	ALU 6063-T6	API-2545
15	EXTERIOR GASKET (IMPACT)	GS-2575	API-2577-E
16	INTERIOR GASKET (IMPACT)	GS-2570	API-2577-I
17	DOOR PART - NOT USED	-	-
18	REINFORCED FLAT FILLER	ALU 6063-T6	API-2546
19	OPEN BACK SILL	ALU 6063-T6	API-2520
20	SUBSILL	ALU 6063-T6	API-2550
21	SHALLOW POCKET	ALU 6063-T6	API-2511
22	OPEN BACK VERTICAL	ALU 6063-T6	API-2512
23	POCKET REDUCER	ALU 6063-T6	API-2581
26	SETTING BLOCKS	-	ACC 110
27	DOOR PART - NOT USED	-	-
28	SCREW SPLINE SCREW #12x1-1/4" PHSMS "AB"	-	FS-2594
29	STRAP ANCHOR	ALU 6063-T6	API-2580
30	DOWSIL 995	SILICONE	-
31	WATER DIVERTERS	-	-
32	END DAM	-	API-2550-EC
33	DOOR PART - NOT USED	-	-
34	#12 x 1 1/2" SMS SELF DRILLING SCREWS	-	-
35	TAPCON/PERIMETER ANCHOR 5/16" DIA.	-	-
36	DOOR PART - NOT USED	-	-
37	DOWSIL 795	SILICONE	-
38	ANTI-WALK BLOCK	-	-

FRANK BENNARDO, P.E.  
PE# 0046549 CA. 9885

04/16/2021

FL#15936.1

CORPORATE OFFICE:  
160 SW 12th AVE, SUITE 106  
DEERFIELD BEACH, FL 33442  
(954) 354-0660 | (866) 396-9999  
TEAM@ENGINEERINGEXPRESS.COM  
ENGINEERINGEXPRESS.COM

AMERICAN PRODUCTS, INC.

13909 LYNMAR BLVD.  
TAMPA, FL 33626  
Phn. (813) 925-0144 / FAX: (813) 925-1414

SERIES 2500 FLUSH GLAZED STOREFRONT SYSTEM  
FLORIDA STATEWIDE APPROVAL  
FLORIDA BUILDING CODE SEVENTH EDITION (2020)

REMARKS	DRWN	CHKD	DATE
FBC 2017 UPDATE	LAO	FLB	10/11/17
FBC 2020 UPDATE	TAE	AJP	03/15/21

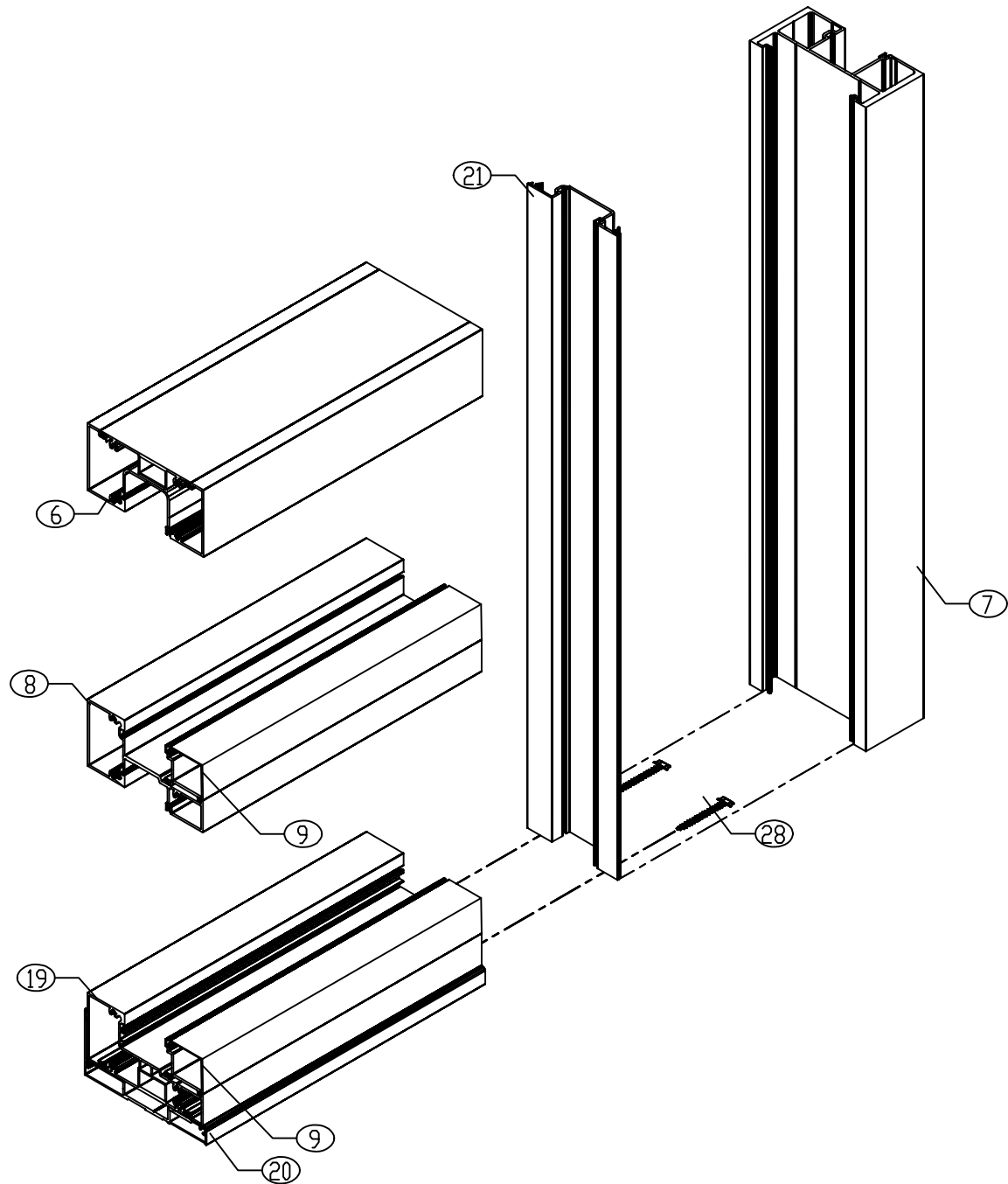
COPYRIGHT ENGINEERING EXPRESS®

21-38295

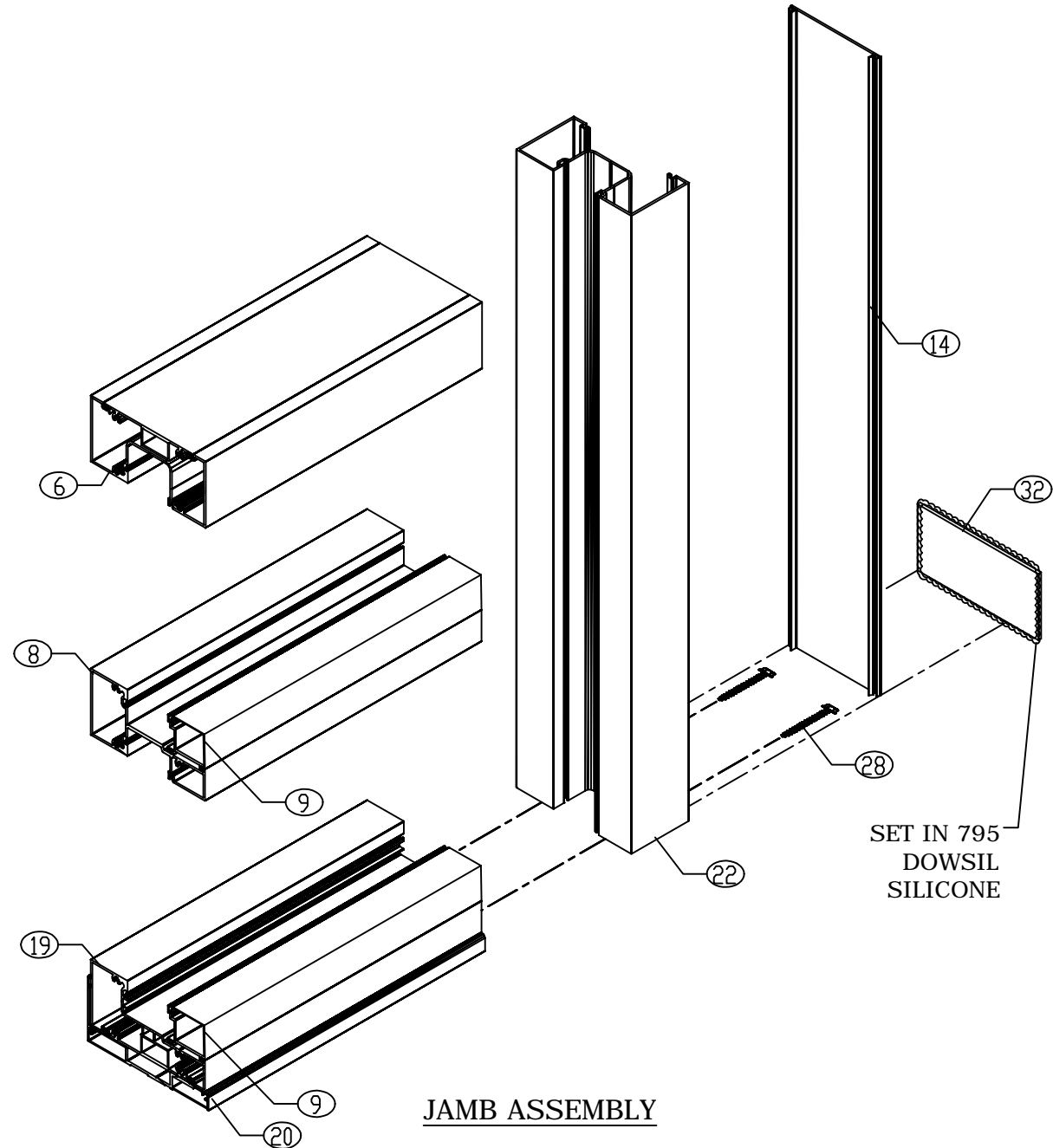
SCALE: NTS UNLESS NOTED

08

C:\Users\Joe\Downloads\21-38295 Series 2500 FL15936.1.dwg 04/16/2021 - 11:26am Joe



MULLION ASSEMBLY



JAMB ASSEMBLY

NOTE:  
SEAL ALL CORNERS WITH  
DOWSIL 795 SILICONE

REMARKS	DRWN	CHKD	DATE
FBC 2017 UPDATE	LAO	FLB	10/11/17
FBC 2020 UPDATE	TAE	AJP	03/15/21

COPYRIGHT ENGINEERING EXPRESS®