

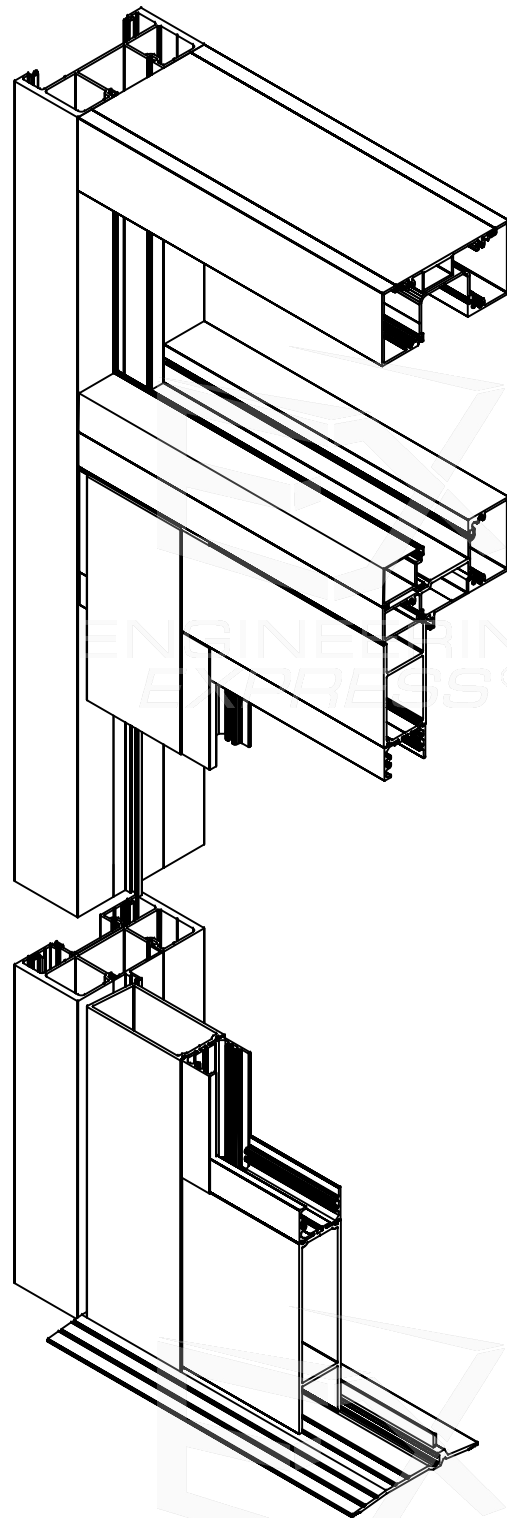
AMERICAN PRODUCTS, INC.

SERIES 2500 GLAZES COMMERCIAL DOOR WITH TRANSOM

LARGE MISSILE IMPACT LEVEL D / HVHZ

FRANK BENNARDO, PE
PE# 46549 CA# 9885

AUGUST 8, 2023



NOTE REGARDING USE OF THIS DOCUMENT & USE OUTSIDE FLORIDA:

NON-SITE-SPECIFIC STRUCTURAL PERFORMANCE EVALUATION. THIS PRODUCT EVALUATION IS VALID FOR USE IN **FLORIDA ONLY**. USE IN FLORIDA OR ANY OTHER STATE SHALL REQUIRE A REVIEW & CERTIFICATION BY A REGISTERED DESIGN PROFESSIONAL LICENSED IN THAT STATE, WHO SHALL BE RESPONSIBLE FOR THE CONTENT & PROPER ADAPTATION OF THIS GENERAL PERFORMANCE EVALUATION TO ANY SITE-SPECIFIC PROJECT. CONTACT THIS OFFICE FOR ASSISTANCE WITH YOUR PROJECT NEEDS.

GENERAL NOTES:

- THE SYSTEM AND GLASS TYPES DESCRIBED HEREIN COMPLY AND HAVE BEEN DESIGNED AND TESTED IN ACCORDANCE WITH THE FLORIDA BUILDING CODE 8TH EDITION (2023) PER
 - TAS 201 / 202 / 203
 - AAMA 501
- FOR USE **WITHIN AND OUTSIDE** THE HIGH VELOCITY HURRICANE ZONE (HVHZ).
- GLASS UNIT(S) SHALL ME THE REQUIREMENTS OF ASTM E-1300.
- DESIGN PRESSURES NOTED HEREIN ARE BASED ON MAXIMUM TESTED PRESSURES DIVIDED BY A 1.5 SAFETY FACTOR.
- THE ARCHITECT/ENGINEER OF RECORD FOR THE PROJECT SUPERSTRUCTURE WITH WHICH THIS DESIGN IS USED SHALL BE RESPONSIBLE FOR THE INTEGRITY OF ALL SUPPORTING SURFACES TO THIS DESIGN WHICH SHALL BE COORDINATED BY THE PERMITTING CONTRACTOR.WOOD BUCKS (BY OTHERS) SHALL BE ANCHORED PROPERLY TO TRANSFER LOADS TO THE EXISTING STRUCTURE.
- THE SYSTEM DETAILED HEREIN IS GENERIC AND DOES NOT PROVIDE INFORMATION FOR A SPECIFIC SITE. FOR SITE CONDITIONS DIFFERENT FROM THE CONDITIONS DETAILED HEREIN, A LICENSED ENGINEER OR REGISTERED ARCHITECT SHALL PREPARE SITE SPECIFIC DOCUMENTS FOR USE IN CONJUNCTION WITH THIS DOCUMENT.
- THE CONTRACTOR IS RESPONSIBLE TO INSULATE ALL MEMBERS FROM DISSIMILAR MATERIALS TO PREVENT ELECTROLYSIS.
- FASTENERS SHALL BE CADMIUM-PLATED OR OTHERWISE CORROSION-RESISTANT MATERIAL AND SHALL COMPLY WITH "SPECIFICATIONS FOR ALUMINUM STRUCTURES" SECTION J.3.7.2 BY THE ALUMINUM ASSOCIATION, INC., & ANY APPLICABLE FEDERAL, STATE, AND/OR LOCAL CODES.
- REFER TO FASTENER MANUFACTURER'S PUBLISHED DATA SHEETS AND RECOMMENDATIONS FOR FASTENER INSTALLATION INSTRUCTIONS.
- ENGINEER SEAL AFFIXED HERETO VALIDATE STRUCTURAL DESIGN AS SHOWN ONLY. USE OF THIS SPECIFICATION BY CONTRACTOR, et. al. INDEMNIFIES & SAVES HARMLESS THIS ENGINEER FOR ALL COST & DAMAGES INCLUDING LEGAL FEES & APPELLATE FEES RESULTING FROM MATERIAL FABRICATION, SYSTEM ERECTION, & CONSTRUCTION PRACTICES BEYOND THAT WHICH IS CALLED FOR BY LOCAL, STATE, & FEDERAL CODES & FROM DEVIATIONS OF THIS PLAN.
- EXCEPT AS EXPRESSLY PROVIDED HEREIN, NO ADDITIONAL CERTIFICATIONS OR AFFIRMATIONS ARE INTENDED.
- PRESSURE VALUES ON THIS APPROVAL ARE (ASD) ALLOWABLE DESIGN PRESSURES.
- ALTERATIONS, ADDITIONS, OR OTHER MARKINGS TO THIS DOCUMENT ARE NOT PERMITTED AND INVALIDATE THIS CERTIFICATION.
- SAFEGUARDS MUST BE OBSERVED (NOT IN THIS CERTIFICATION)
- IF SLOPED GLAZING IS NEEDED, IT SHALL BE ALLOWED UNDER SITE SPECIFIC ENGINEERING. DESIGN MUST BE CHECKED AND APPROVED BY A PROFESSIONAL ENGINEER AND THE MANUFACTURER(S).
- UNITS SHALL BE LABELED IN ACCORDANCE WITH THE FLORIDA BUILDING COMMISSION AND THE FLORIDA DEPARTMENT OF BUSINESS & PROFESSIONAL REGULATION SPECIFICATION.
- TEST REPORTS: ARCHITECTURAL TESTING REPORTS # B8049.01-401-18, B8050.01-401-18 & F7401.01-401-18
- THIS SYSTEM MAY BE USED IN CONJUNCTION WITH AMERICAN PRODUCTS SERIES 2500 GLAZED ALUMINUM COMMERCIAL STOREFRONT.
- DOOR TO SUBSTRATE WATERPROOFING IS NOT INCLUDED IN THIS DOCUMENT AND MUST BE ADDRESSED AN A SITE SPECIFIC BASES. NOT AMERICAN PRODUCTS INC.

FL 15937.1

EX ENGINEERING EXPRESS®

POSTAL ADDRESS:
401 W. ATLANTIC AVE RIO BOX 219
DELRAY BEACH, FL 33444
ENGINEERINGEXPRESS.COM

AMERICAN PRODUCTS, INC.

13909 LYNMAR BLVD.
TAMPA, FL 33626
PH: (813) 925-0144 / FAX: (813) 925-1414

SERIES 2500 GLAZED COMMERCIAL DOOR WITH TRANSOM
FLORIDA BUILDING CODE EIGHTH EDITION (2023)
FLORIDA STATEWIDE APPROVAL (FSA FL#15937.1)

REMARKS	DRWN	CHKD	DATE
FBC 2020 (21-38298)	TAE	AJP	03/17/21
FBC 2023 UPDATE	ISQ	RS	07/31/23

COPYRIGHT ENGINEERING EXPRESS®

23-63506

SCALE: NTS UNLESS NOTED

01 OF 14

VISIT [ECALC.IO/63506](https://ecalculator.com/63506)

FOR SITE-SPECIFIC DEVIATIONS & MORE INFORMATION ABOUT THIS DOCUMENT OR SCAN THIS QR CODE

VISIT [ENGINEERINGEXPRESS.COM/STORE](https://engineeringexpress.com/store) FOR ADDITIONAL PLANS, REPORTS & RESOURCES



c:\users\sam\engineering express\production - documents\projects\23-123-63506 2023 product fbc update fl15937\work\drawings & cad\23-63506 series 2500 fl15937.1.dwg
SAM
8/8/2023 2:28 PM

c:\users\sam\engineering\express\production - documents\projects\23-123-63506 2023 product fbc update fl15937\work\drawings & cad\23-63506 series 2500 fl15937.1.dwg

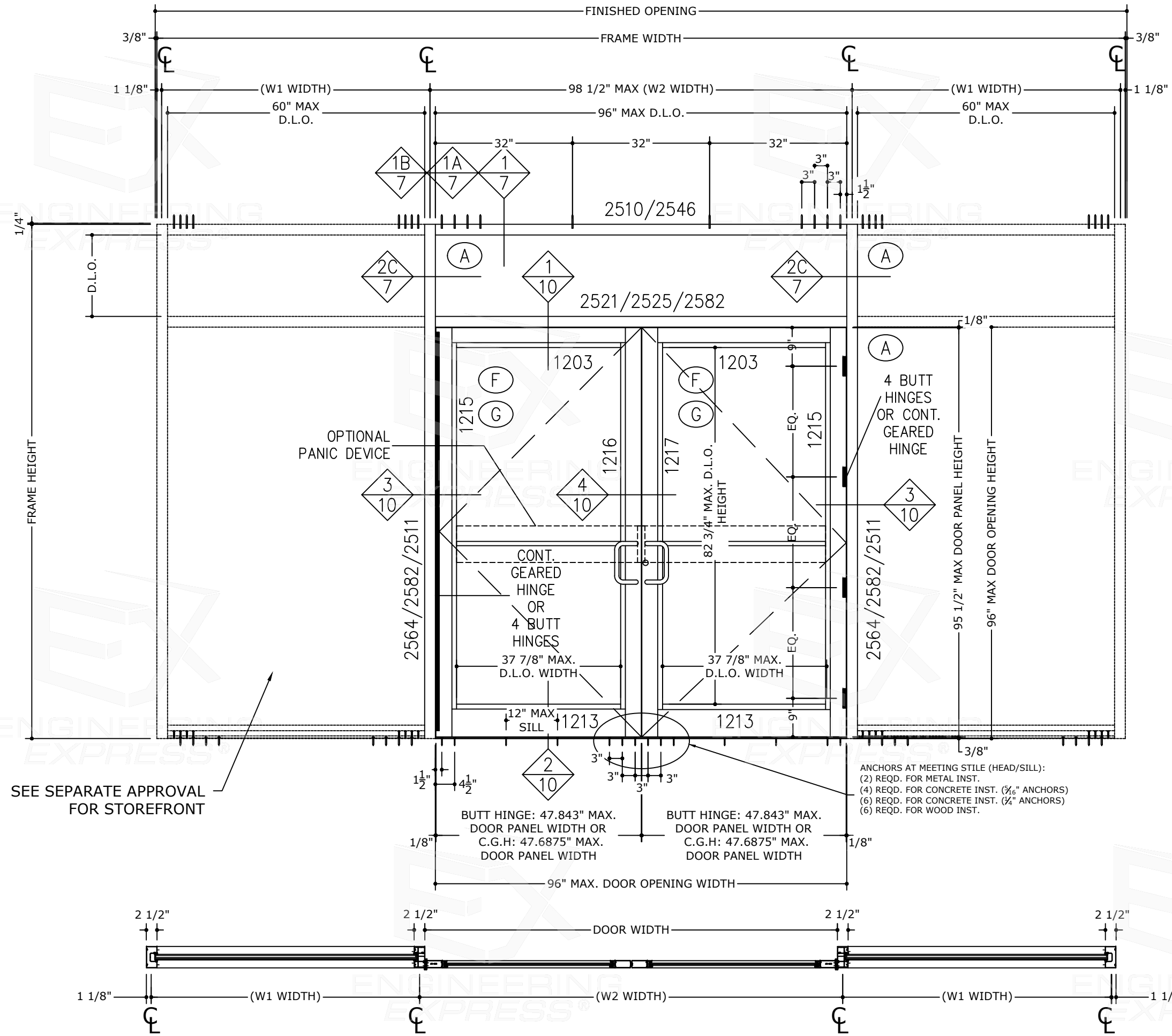
8/8/2023 2:28 PM SAM

FRANK BENNARDO, PE
PE# 46549 CA# 9885

AUGUST 8, 2023

PE SEAL REQUIRED
FL
COPIES NOT VALID FOR PERMIT

FRANK L. BENNARDO
LICENSE
No 0046549
STATE OF FLORIDA
PROFESSIONAL ENGINEER
SIGNED: 08/10/2023



SEE SEPARATE APPROVAL FOR STOREFRONT

ANCHORS AT MEETING STILE (HEAD/SILL):
(2) REQD. FOR METAL INST.
(4) REQD. FOR CONCRETE INST. (5/16" ANCHORS)
(6) REQD. FOR CONCRETE INST. (3/8" ANCHORS)
(6) REQD. FOR WOOD INST.

FL 15937.1

EX ENGINEERING EXPRESS

AMERICAN PRODUCTS, INC.

13909 LYNMAR BLVD.
TAMPA, FL 33626
PH: (813) 925-0144 / FAX: (813) 925-1414

POSTAL ADDRESS:
401 W. ATLANTIC AVE R10 BOX 219
DELRAY BEACH, FL 33444
ENGINEERINGEXPRESS.COM

SERIES 2500 GLAZED COMMERCIAL DOOR WITH TRANSOM
FLORIDA BUILDING CODE EIGHTH EDITION (2023)
FLORIDA STATEWIDE APPROVAL (FSA FL#15937.1)

REMARKS	DRWN	CHKD	DATE
FBC 2020 (21-39298)	TAE	AJP	03/17/21
FBC 2023 UPDATE	ISQ	RS	07/31/23

COPYRIGHT ENGINEERING EXPRESS

23-63506

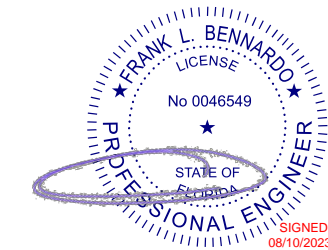
SCALE: NTS UNLESS NOTED

02 OF 14

c:\users\sam\engineering\express\production - documents\projects\23-123-63506 2023 product fbc update fl15937\work\drawings & cad\23-63506 series 2500 fl15937.1.dwg

FRANK BENNARDO, PE
PE# 46549 CA# 9885

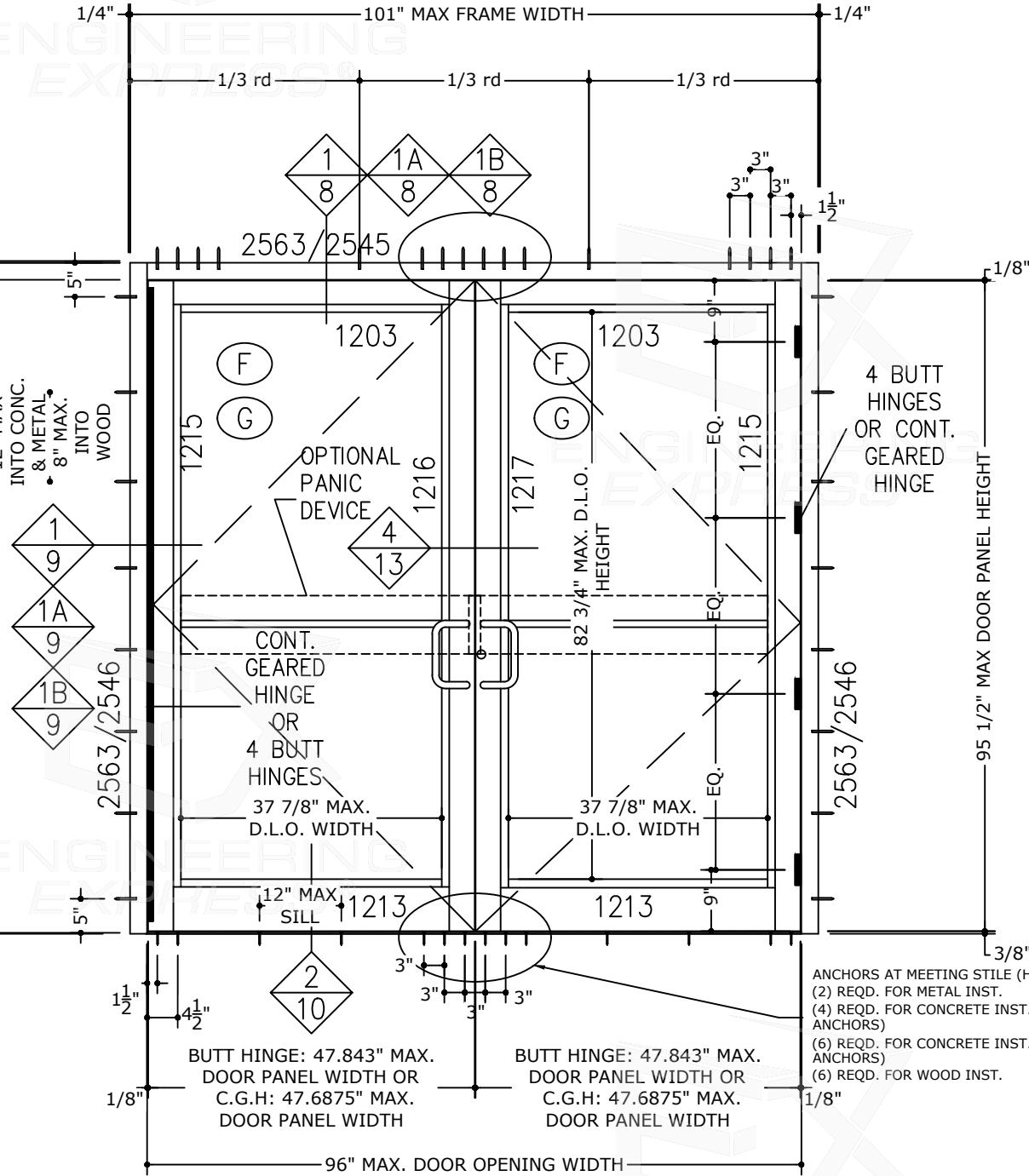
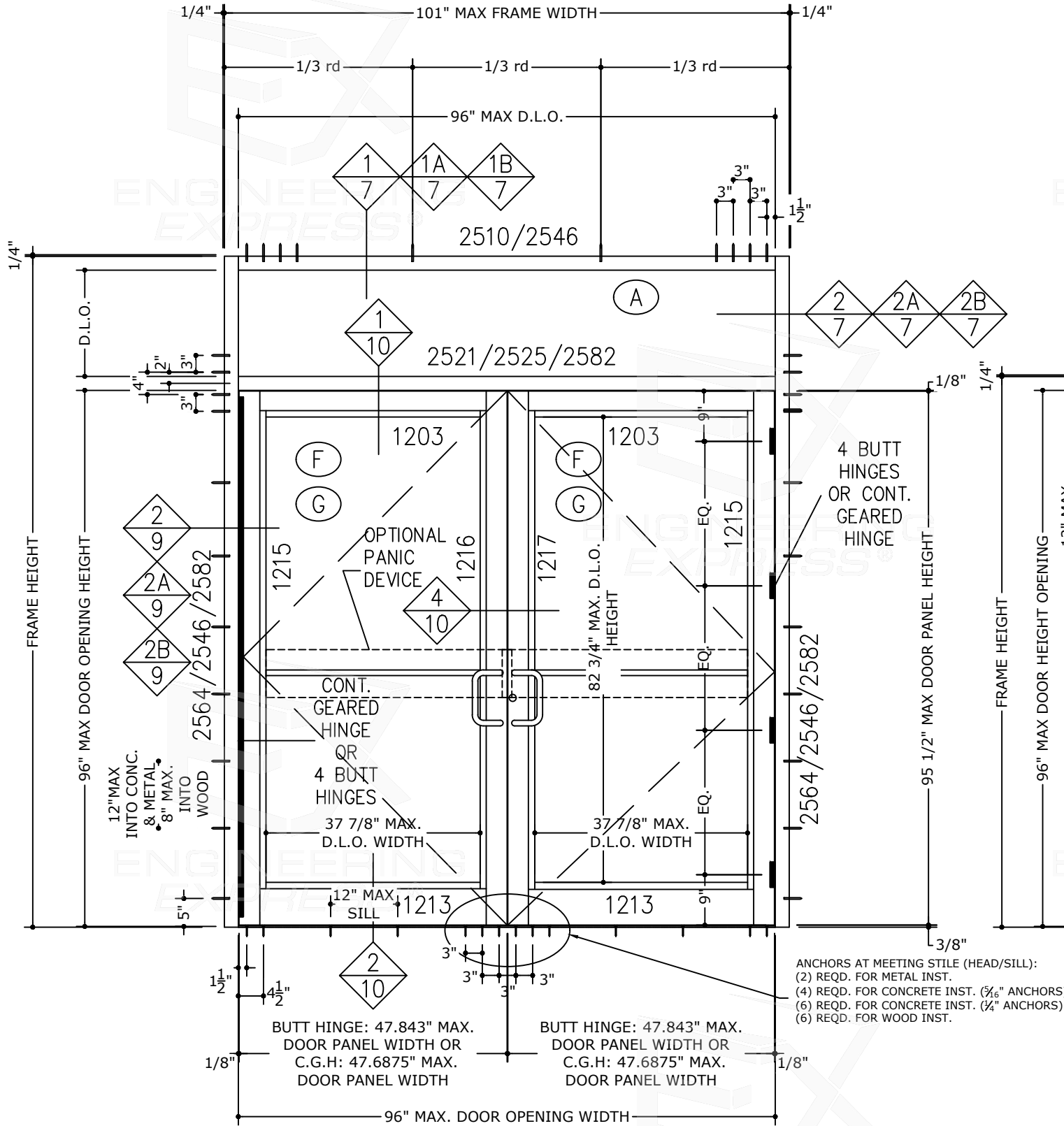
AUGUST 8, 2023



PE SEAL REQUIRED

FL

COPIES NOT VALID
FOR PERMIT



ANCHORS AT MEETING STILE (HEAD/SILL):
(2) REQD. FOR METAL INST.
(4) REQD. FOR CONCRETE INST. (5/16\"/>

ANCHORS AT MEETING STILE (HEAD/SILL):
(2) REQD. FOR METAL INST.
(4) REQD. FOR CONCRETE INST. (5/16\"/>

FL 15937.1

EXENGINEERING EXPRESS
AMERICAN PRODUCTS, INC.
13909 LYNMAR BLVD.
TAMPA, FL 33626
PH: (813) 925-0144 / FAX: (813) 925-1414
SERIES 2500 GLAZED COMMERCIAL DOOR WITH TRANSPARENT
FLORIDA BUILDING CODE EIGHTH EDITION (2023)
FLORIDA STATEWIDE APPROVAL (FSA FL#15937.1)

AMERICAN PRODUCTS, INC.

REMARKS	DRWN	CHKD	DATE
FBC 2020 (21-38298)	TAE	AJP	03/17/21
FBC 2023 UPDATE	ISQ	RS	07/31/23

23-63506

SCALE: NTS UNLESS NOTED

03 OF 14

FRANK BENNARDO, PE
PE# 46549 CA# 9885

AUGUST 8, 2023

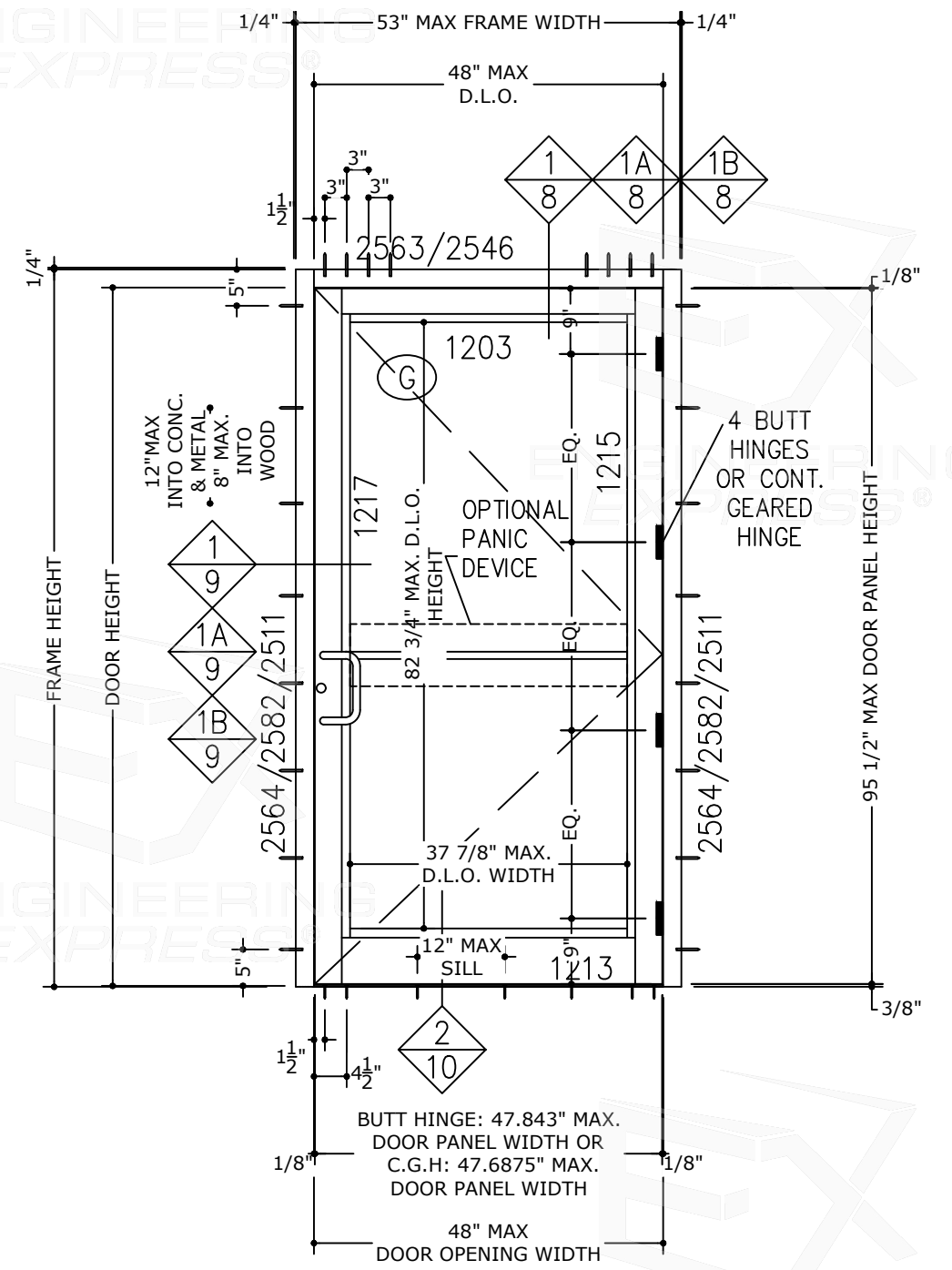
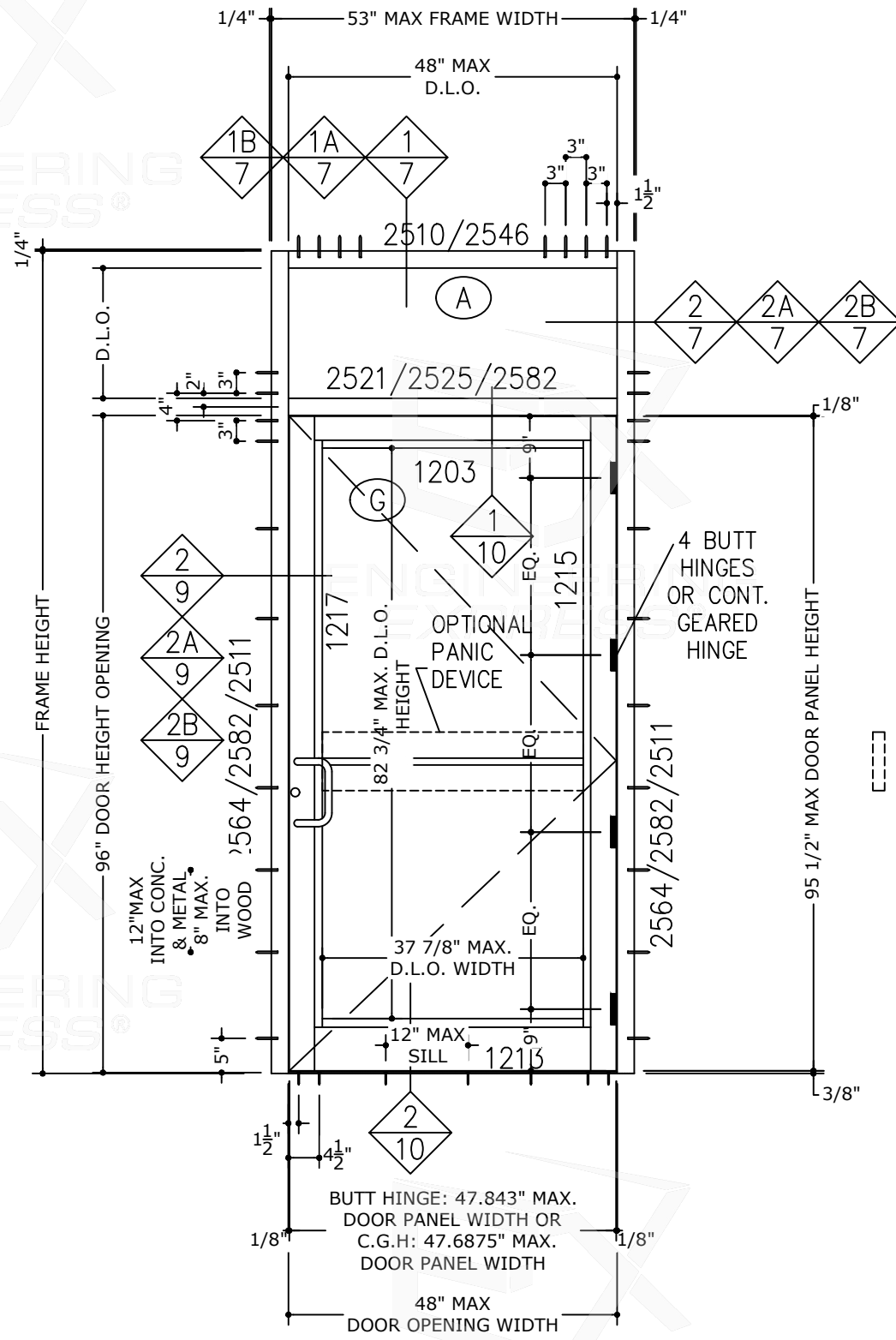
PE SEAL REQUIRED
FL
COPIES NOT VALID
FOR PERMIT

FRANK L. BENNARDO
LICENSE
No 0046549
STATE OF FLORIDA
PROFESSIONAL ENGINEER
SIGNED: 08/10/2023

FL 15937.1

AMERICAN PRODUCTS, INC.
13909 LYNMAR BLVD.
TAMPA, FL 33626
PH: (813) 925-0144 / FAX: (813) 925-1414
SERIES 2500 GLAZED COMMERCIAL DOOR WITH TRANSPARENT
FLORIDA BUILDING CODE EIGHTH EDITION (2023)
FLORIDA STATEWIDE APPROVAL (FSA FL#15937.1)

EX ENGINEERING EXPRESS
POSTAL ADDRESS:
401 W. ATLANTIC AVE RIO BOX 219
DELRAY BEACH, FL 33444
ENGINEERINGEXPRESS.COM



REMARKS	DRWN	CHKD	DATE
FBC 2020 (21-39298)	TAE	AJP	03/17/21
FBC 2023 UPDATE	ISQ	RS	07/31/23

COPYRIGHT ENGINEERING EXPRESS®

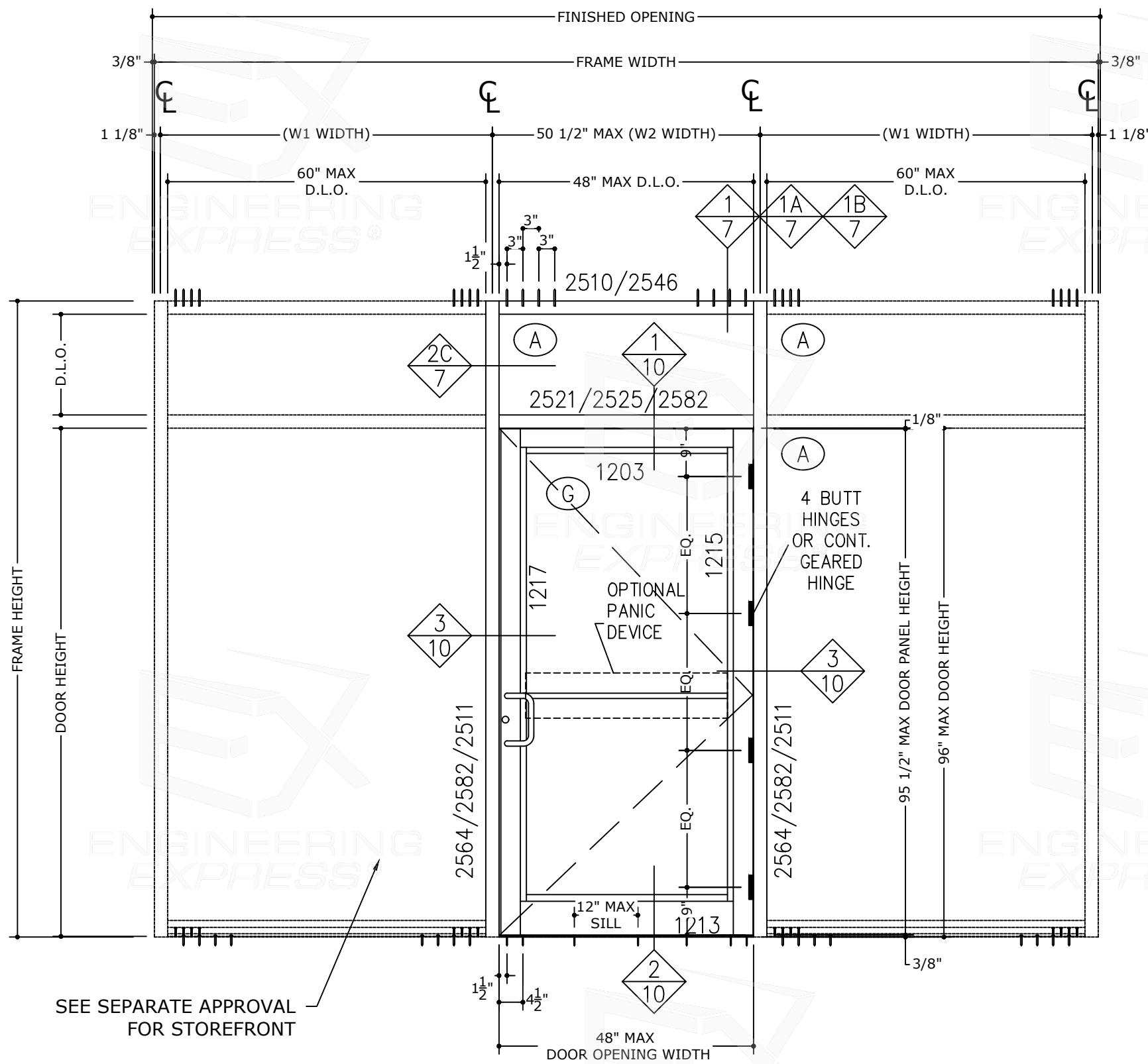
23-63506

SCALE: NTS UNLESS NOTED

FRANK BENNARDO, PE
PE# 46549 CA# 9885

AUGUST 8, 2023

PE SEAL REQUIRED
FL
COPIES NOT VALID FOR PERMIT



ANCHOR SPACING LAYOUT TYPICAL ANCHORS:

TYPE 'A'	
CONCRETE	DIRECTLY INTO CONCRETE (3513 PSI MIN) 5/16" DIA. ULTRACON BY 'DEWALT' (Fu=177 KSI, Fy=155 KSI) 1-3/4" MIN. EMBED INTO CONCRETE
TYPE 'B'	
WOOD	INTO 2BY WOOD BUCKS OR WOOD STRUCTURES (SYP#2 G=0.55 MIN) 1/4" DIA. ULTRACON BY 'DEWALT' (Fu=177 KSI, Fy=155 KSI) 1-1/2" MIN. PENETRATION INTO WOOD
TYPE 'C'	
CONCRETE	DIRECTLY INTO CONCRETE (2846 PSI MIN) 1/4" DIA. ULTRACON BY 'DEWALT' (Fu=177 KSI, Fy=155 KSI) 1-3/4" MIN. EMBED INTO CONCRETE
TYPE 'D'	
METAL	INTO METAL STRUCTURES (3 PICHES PASS THE THREAD PLANE MIN.) STEEL: 18-18 GAGE STEEL MIN (Fy=36 KSI MIN) ALUMINUM: 1/8" THK MIN. (6063-T5 MIN) 1/4-20 DIA. DRIL-FLEX BY 'DEWALT' (GRADE 5 MIN) (STEEL IN CONTACT WITH ALUMINUM TO BE PLATED OR PAINTED)
<p>TYPICAL EDGE DISTANCE</p> <p>INTO CONCRETE = 1/4" ANCHORS USE 2 1/2" MIN. 5/16" ANCHORS USE 3" MIN.</p> <p>INTO WOOD STRUCTURE = 1" MIN.</p> <p>INTO METAL STRUCTURE = 1" MIN.</p>	

FL 15937.1

ENGINEERING EXPRESS

AMERICAN PRODUCTS, INC.

13909 LYNMAR BLVD.
TAMPA, FL 33626
PH: (813) 925-0144 / FAX: (813) 925-1414

POSTAL ADDRESS:
401 W. ATLANTIC AVE R10 BOX 219
DELRAY BEACH, FL 33444
ENGINEERINGEXPRESS.COM

REMARKS	DRWN	CHKD	DATE
FBC 2020 (21-38298)	TAE	AJP	03/17/21
FBC 2023 UPDATE	SQ	RS	07/31/23

COPYRIGHT ENGINEERING EXPRESS®

23-63506

SCALE: NTS UNLESS NOTED

05 OF 14

c:\users\sam\engineering\express\production - documents\projects\23-123-63506 2023 product fbc update fl15937\work\drawings & cad\23-63506 series 2500 fl15937.1.dwg

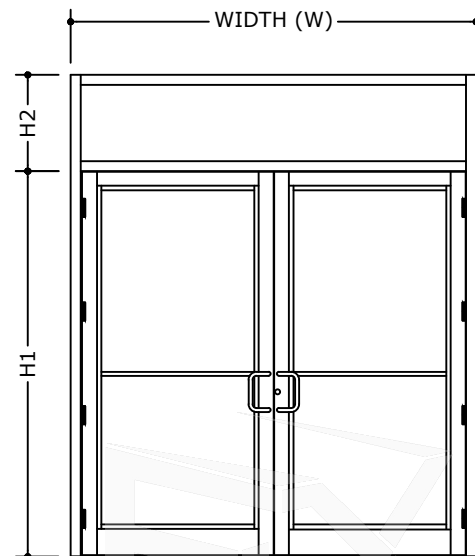
8/8/2023 2:28 PM SAM

DOUBLE DOOR

DOUBLE DOOR HORIZONTAL (O / XX) WITH TRANSOM			
WIDTH (W)	DOOR HEIGHT (H1)	TRANSOM HEIGHT (H2)	POSITIVE AND NEGATIVE DESIGN PRESSURES
60"	80"	24"	60.0 psf
		30"	60.0 psf
		36"	60.0 psf
		40"	60.0 psf
		46"	60.0 psf
72"	80"	24"	60.0 psf
		30"	60.0 psf
		36"	60.0 psf
		40"	60.0 psf
		46"	60.0 psf
78"	80"	24"	60.0 psf
		30"	60.0 psf
		36"	60.0 psf
		40"	60.0 psf
		46"	60.0 psf
84"	80"	24"	60.0 psf
		30"	60.0 psf
		36"	60.0 psf
		* 40"	60.0 psf
		* 46"	60.0 psf
90"	80"	24"	60.0 psf
		30"	60.0 psf
		* 36"	60.0 psf
		* 40"	60.0 psf
		* 46"	60.0 psf
96"	80"	24"	60.0 psf
		* 30"	60.0 psf
		* 36"	60.0 psf
		* 40"	60.0 psf
		* 46"	60.0 psf
60"	84"	24"	60.0 psf
		30"	60.0 psf
		36"	60.0 psf
		42"	60.0 psf
		24"	60.0 psf
72"	84"	30"	60.0 psf
		36"	60.0 psf
		42"	60.0 psf
		24"	60.0 psf
		30"	60.0 psf
78"	84"	30"	60.0 psf
		36"	60.0 psf
		42"	60.0 psf
		24"	60.0 psf
		30"	60.0 psf
84"	84"	30"	60.0 psf
		36"	60.0 psf
		* 42"	60.0 psf
		24"	60.0 psf
		30"	60.0 psf
90"	84"	30"	60.0 psf
		* 36"	60.0 psf
		* 42"	60.0 psf
		24"	60.0 psf
		* 30"	60.0 psf
96"	84"	* 36"	60.0 psf
		* 40"	60.0 psf
		* 46"	60.0 psf
		24"	60.0 psf
		* 30"	55.0 psf

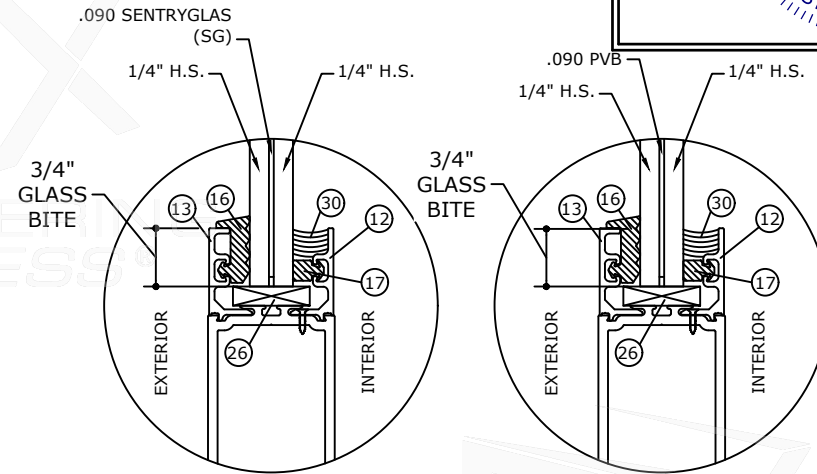
DOUBLE DOOR

DOUBLE DOOR HORIZONTAL (O / XX) WITH TRANSOM			
WIDTH (W)	DOOR HEIGHT (H1)	TRANSOM HEIGHT (H2)	POSITIVE AND NEGATIVE DESIGN PRESSURES
60"	90"	24"	60.0 psf
		36"	60.0 psf
		30"	60.0 psf
		24"	60.0 psf
		30"	60.0 psf
72"	90"	24"	60.0 psf
		36"	60.0 psf
		30"	60.0 psf
		24"	60.0 psf
		30"	60.0 psf
78"	90"	24"	60.0 psf
		36"	60.0 psf
		30"	60.0 psf
		24"	60.0 psf
		30"	60.0 psf
84"	90"	24"	60.0 psf
		30"	60.0 psf
		36"	60.0 psf
		24"	60.0 psf
		30"	60.0 psf
90"	90"	24"	60.0 psf
		30"	60.0 psf
		* 36"	60.0 psf
		24"	60.0 psf
		* 30"	60.0 psf
96"	90"	* 36"	55.0 psf
		24"	60.0 psf
		* 30"	60.0 psf
		* 36"	60.0 psf
		24"	60.0 psf
60"	96"	24"	60.0 psf
		30"	60.0 psf
		24"	60.0 psf
		30"	60.0 psf
		24"	60.0 psf
72"	96"	24"	60.0 psf
		30"	60.0 psf
		24"	60.0 psf
		30"	60.0 psf
		24"	60.0 psf
78"	96"	24"	60.0 psf
		30"	60.0 psf
		24"	60.0 psf
		30"	60.0 psf
		24"	60.0 psf
84"	96"	24"	60.0 psf
		30"	60.0 psf
		24"	60.0 psf
		30"	60.0 psf
		24"	60.0 psf
90"	96"	24"	60.0 psf
		30"	60.0 psf
		24"	60.0 psf
		30"	60.0 psf
		24"	60.0 psf
96"	96"	24"	60.0 psf
		30"	60.0 psf
		24"	60.0 psf
		30"	60.0 psf
		24"	60.0 psf



* ALUMINUM REINFORCEMENT REQUIRED AT HORIZONTAL MULLIONS. SEE DETAIL 1A/10

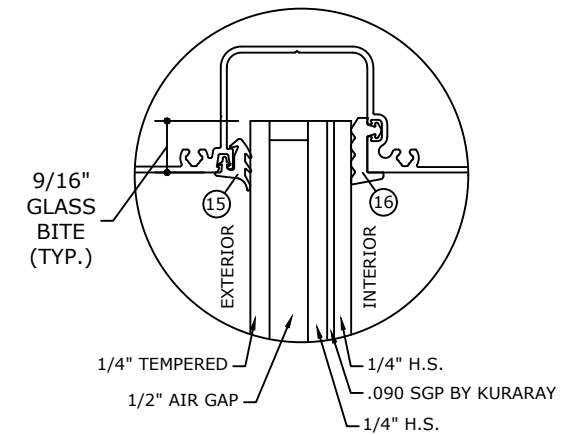
DOOR GLASS TYPES



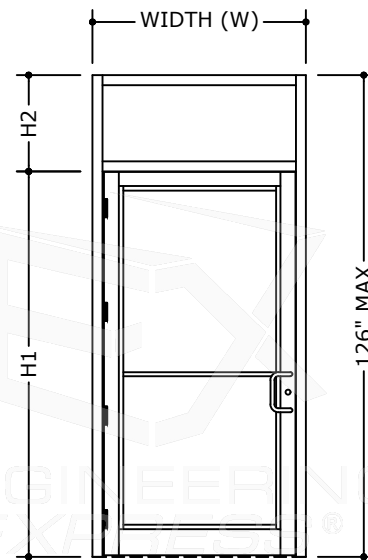
GLASS TYPE "F"

GLASS TYPE "G"

TRANSOM GLASS TYPE DRY GLAZED



GLASS TYPE "A"



SINGLE DOOR

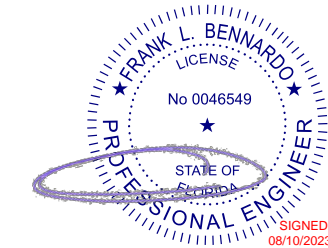
SINGLE DOOR HORIZONTAL (OX) WITH TRANSOM			
OPENG. WIDTH	DOOR HEIGHT (H1)	TRANSOM HEIGHT (H2)	POSITIVE AND NEGATIVE DESIGN PRESSURES
30" TO 48"	80" TO 96"	24" TO 46"	60.0 psf

NOTE: GLASS CAPACITY ON THIS SHEET IS BASED ON ASTM E1300-09 (3 SEC GUST)

THE PERIMETER SEAL SYSTEM FOR THE INSULATED GLASS WAS COMPRISED OF ALUMINUM REINFORCED BUTYL AIR SPACER.

FRANK BENNARDO, PE
PE# 46549 CA# 9885

AUGUST 8, 2023



PE SEAL REQUIRED

FL

COPIES NOT VALID FOR PERMIT

FL 15937.1

ENGINEERING EXPRESS
POSTAL ADDRESS:
401 W. ATLANTIC AVE R10 BOX 219
DELRAY BEACH, FL 33444
ENGINEERINGEXPRESS.COM

AMERICAN PRODUCTS, INC.
13909 LYNMAR BLVD.
TAMPA, FL 33626
PH: (813) 925-0144 / FAX: (813) 925-1414
SERIES 2500 GLAZED COMMERCIAL DOOR WITH TRANSOM
FLORIDA BUILDING CODE EIGHTH EDITION (2023)
FLORIDA STATEWIDE APPROVAL (FSA FL#15937.1)

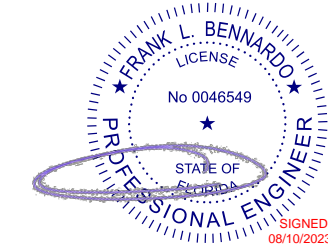
REMARKS	DRWN	CHKD	DATE
FBC 2020 (21-38298)	TAE	AJP	03/17/21
FBC 2023 UPDATE	ISQ	RS	07/31/23

COPYRIGHT ENGINEERING EXPRESS

23-63506

SCALE: NTS UNLESS NOTED

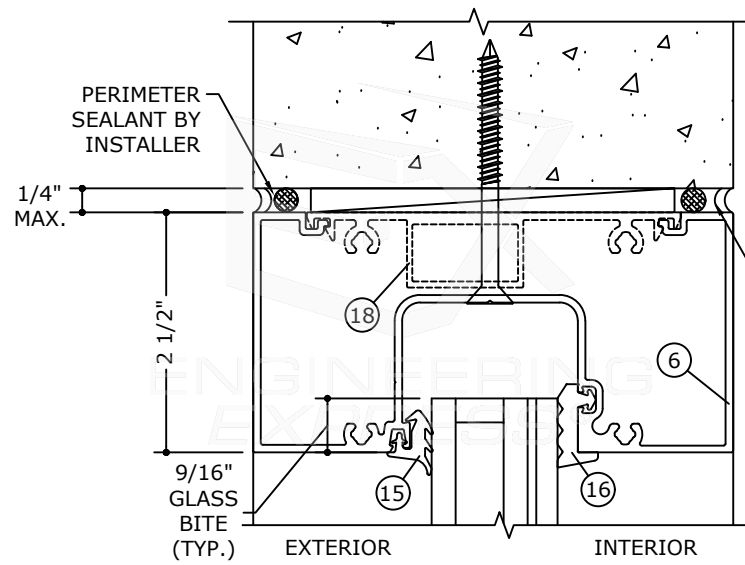
06 OF 14



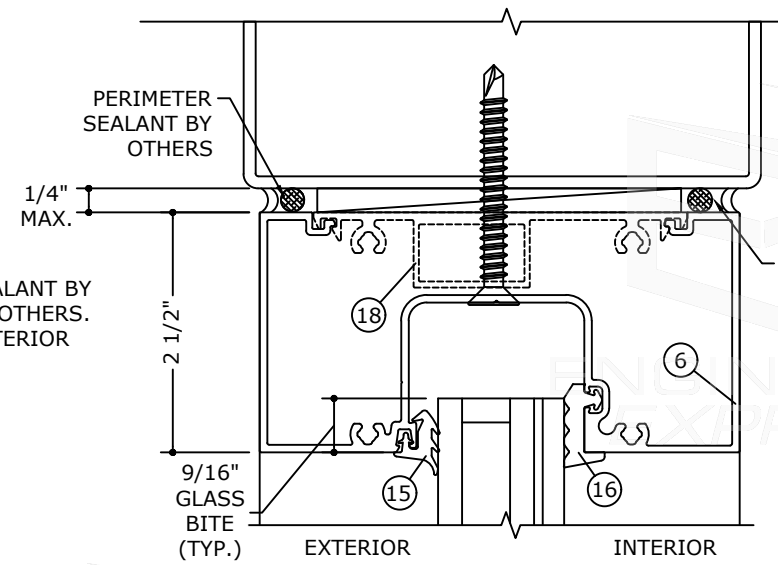
PE SEAL REQUIRED

FL

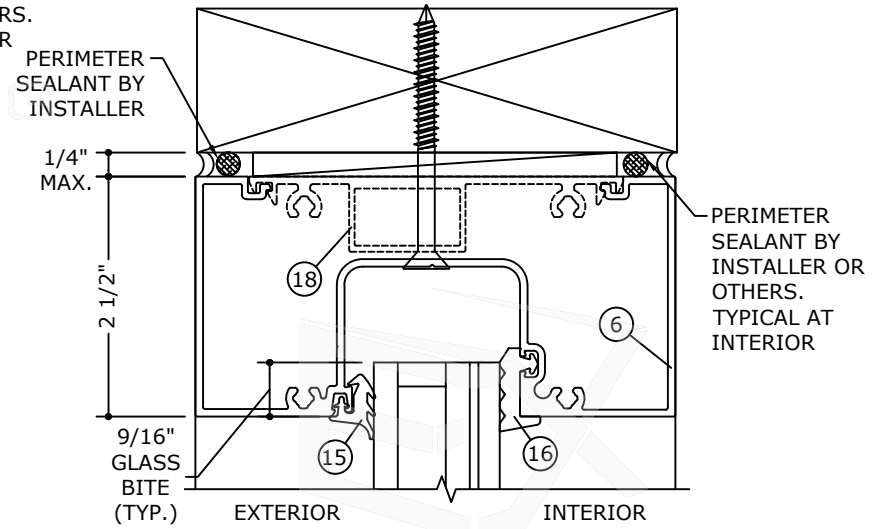
COPIES NOT VALID FOR PERMIT



1 HEAD DETAIL
7 INTO CONCRETE
6" = 1'-0"

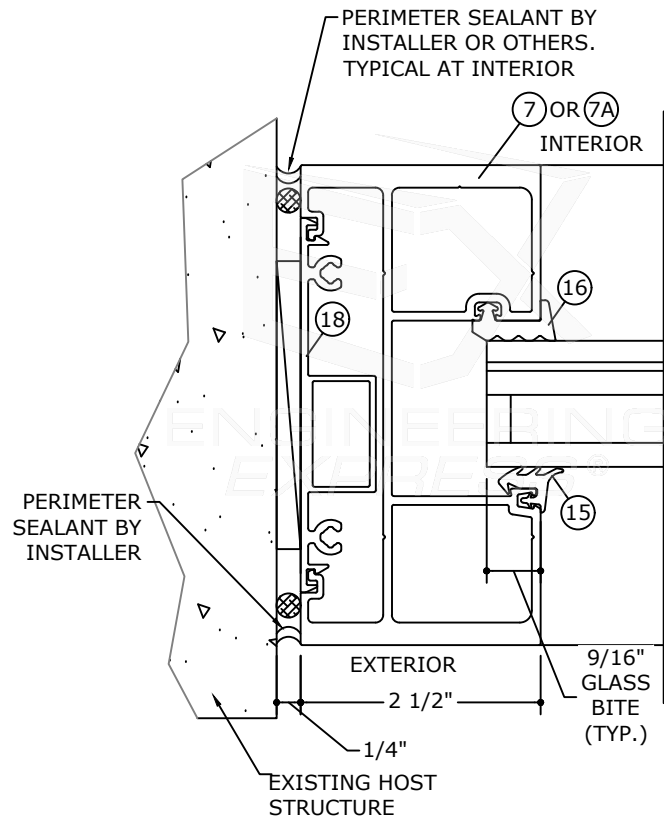


1A HEAD DETAIL
7 INTO METAL STRUCTURES
6" = 1'-0"

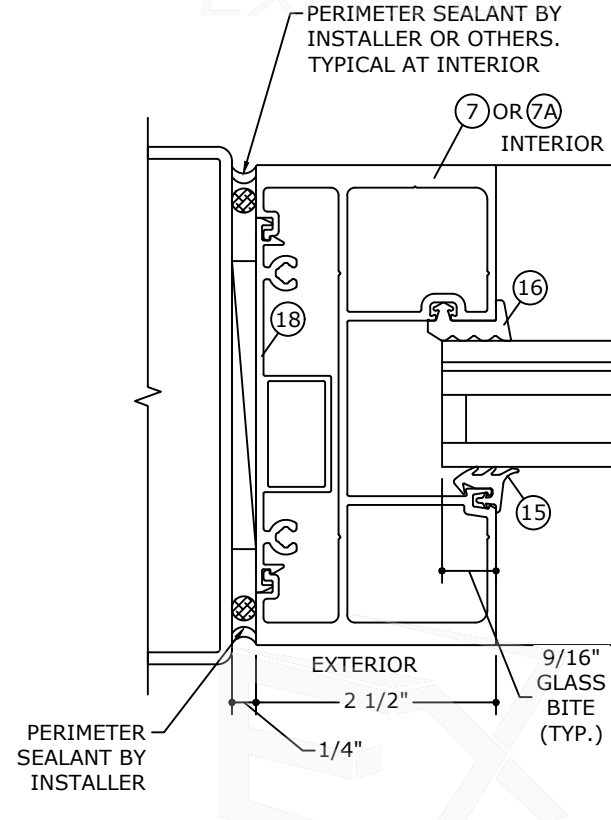


1B HEAD DETAIL
7 INTO WOOD STRUCTURES
6" = 1'-0"

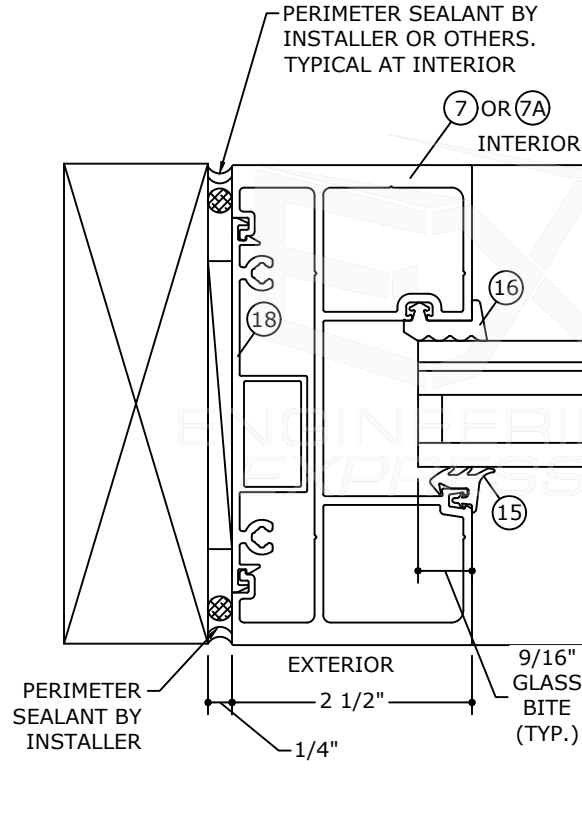
NOTE:
ANCHORS PER ANCHOR SCHEDULE ON SHEET 5. SEE
TYPICAL ELEVATION ON SHEETS 2 THROUGH 5 FOR SPACING



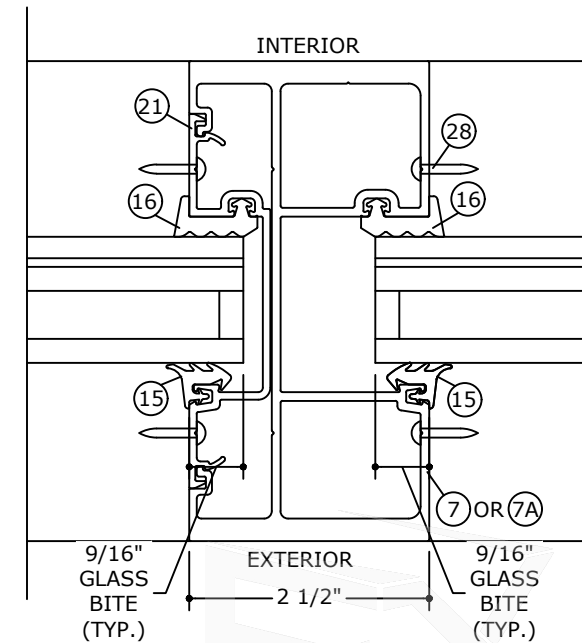
2 JAMB DETAIL
7 INTO CONCRETE
6" = 1'-0"



2A JAMB DETAIL
7 INTO METAL STRUCTURES
6" = 1'-0"



2B JAMB DETAIL
7 INTO WOOD
6" = 1'-0"



2C VERTICAL INTERMEDIATE DETAIL
7 6" = 1'-0"

FL 15937.1

ENGINEERING EXPRESS
POSTAL ADDRESS:
401 W. ATLANTIC AVE RIO BOX 219
DELRAY BEACH, FL 33444
ENGINEERINGEXPRESS.COM

AMERICAN PRODUCTS, INC.
13909 LYNMAR BLVD.
TAMPA, FL 33626
PH: (813) 925-0144 / FAX: (813) 925-1414
SERIES 2500 GLAZED COMMERCIAL DOOR WITH TRANSOM
FLORIDA BUILDING CODE EIGHTH EDITION (2023)
FLORIDA STATEWIDE APPROVAL (FSA FL#15937.1)

REMARKS	DRWN	CHKD	DATE
FBC 2020 (21-38298)	TAE	AJP	03/17/21
FBC 2023 UPDATE	ISQ	RS	07/31/23

COPYRIGHT ENGINEERING EXPRESS®

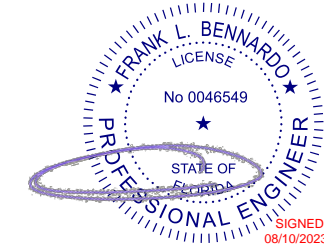
23-63506

SCALE: NTS UNLESS NOTED

07 OF 14

c:\users\sam\engineering\express\production - documents\projects\23-123-63506 2023 product fbc update fl15937\work\drawings & cad\23-63506 series 2500 fl15937.1.dwg

8/8/2023 2:28 PM SAM



PE SEAL REQUIRED

FL

COPIES NOT VALID FOR PERMIT

FL 15937.1

ENGINEERING EXPRESS
POSTAL ADDRESS:
401 W. ATLANTIC AVE R10 BOX 219
DELRAY BEACH, FL 33444
ENGINEERINGEXPRESS.COM

AMERICAN PRODUCTS, INC.
13909 LYNMAR BLVD.
TAMPA, FL 33626
PH: (813) 925-0144 / FAX: (813) 925-1414
SERIES 2500 GLAZED COMMERCIAL DOOR WITH TRANSOM
FLORIDA BUILDING CODE EIGHTH EDITION (2023)
FLORIDA STATEWIDE APPROVAL (FSA FL#15937.1)

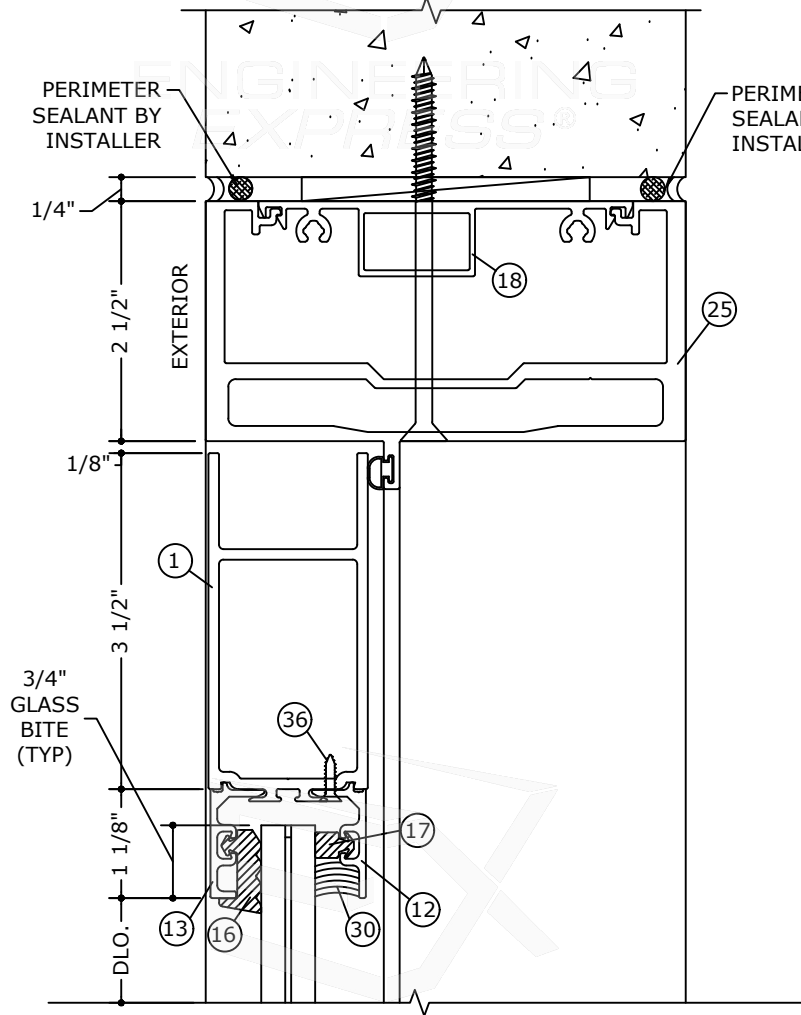
REMARKS	DRWN	CHKD	DATE
FBC 2020 (21-39298)	TAE	AJP	03/17/21
FBC 2023 UPDATE	SQ	RS	07/31/23

COPYRIGHT ENGINEERING EXPRESS®

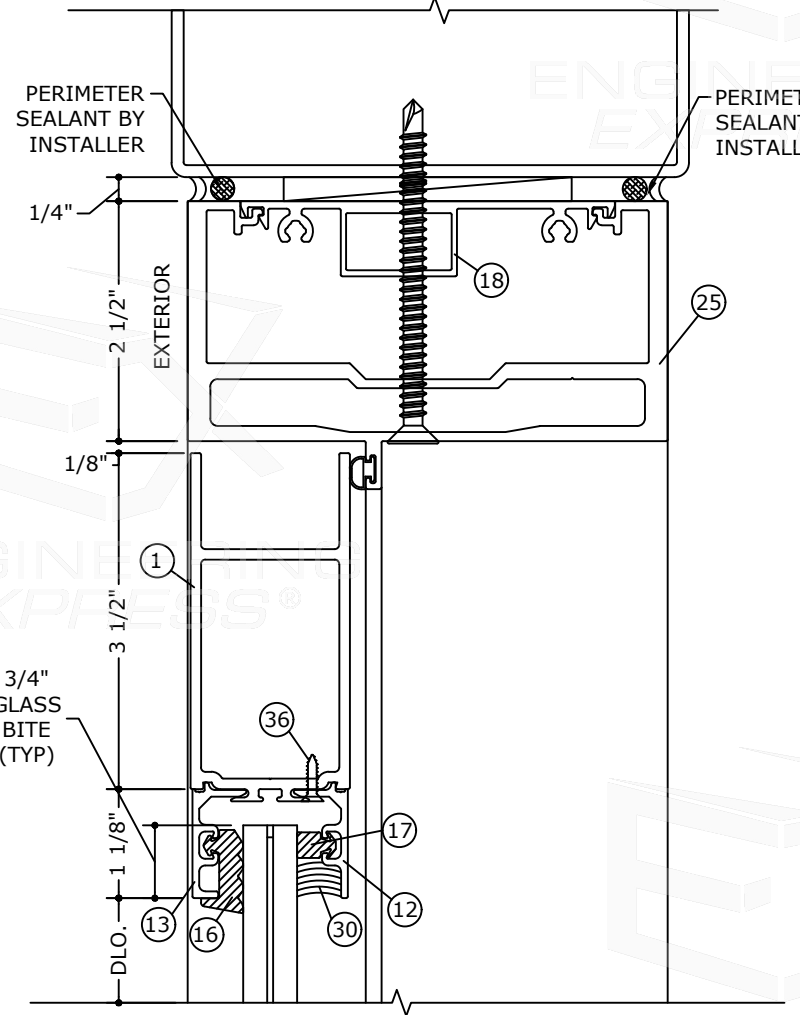
23-63506

SCALE: NTS UNLESS NOTED

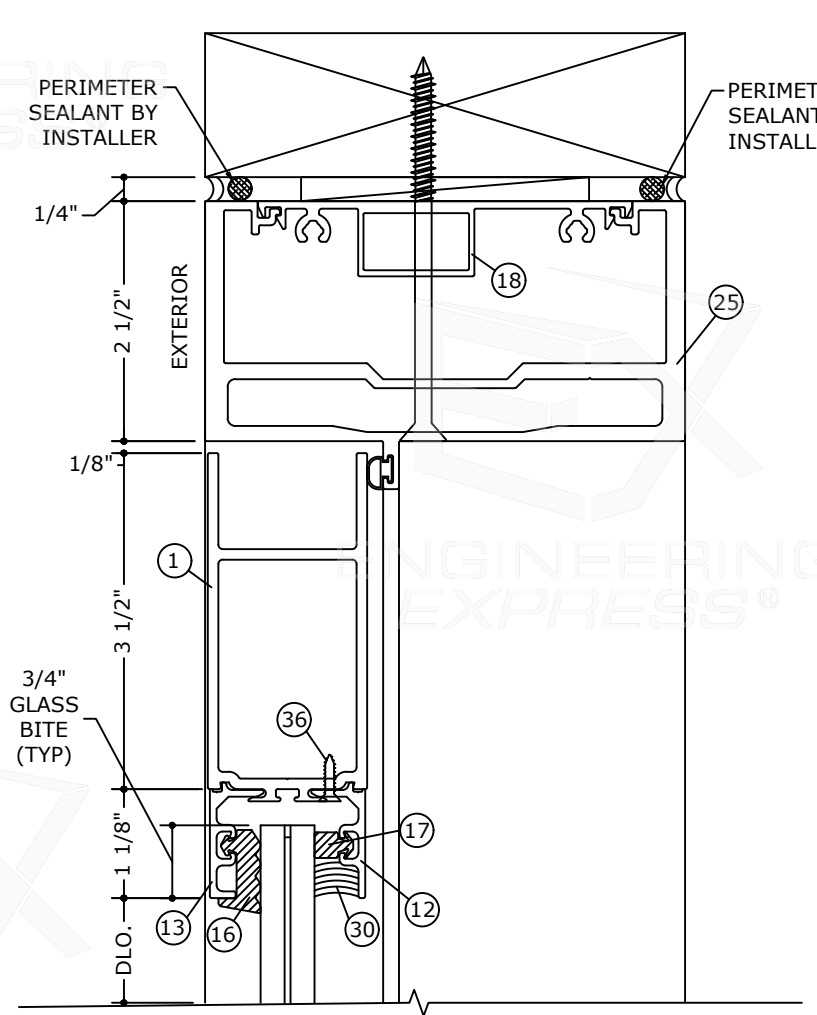
08 OF 14



1 HEAD DETAIL
8 INTO CONCRETE
6" = 1'-0"



1A HEAD DETAIL
8 INTO METAL STRUCTURES
6" = 1'-0"

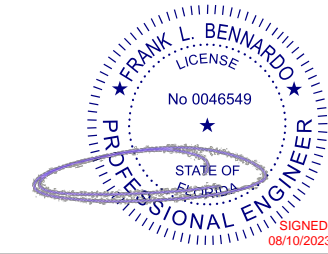


1B HEAD DETAIL
8 INTO WOOD STRUCTURES
6" = 1'-0"

NOTE:
ANCHORS PER ANCHOR SCHEDULE ON SHEET 5. SEE
TYPICAL ELEVATION ON SHEETS 2 THROUGH 5 FOR SPACING

c:\users\sam\engineering\express\production - documents\projects\23-63506 2023 product fbc update fl15937\work\drawings & cad\23-63506 series 2500 fl15937.1.dwg

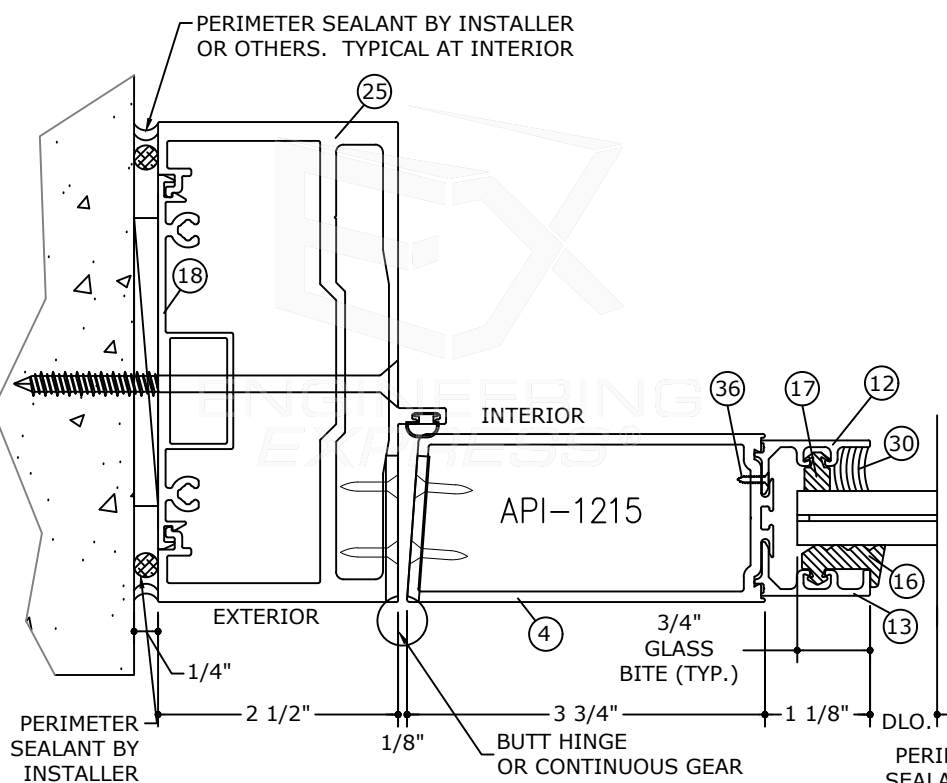
8/8/2023 2:28 PM SAM



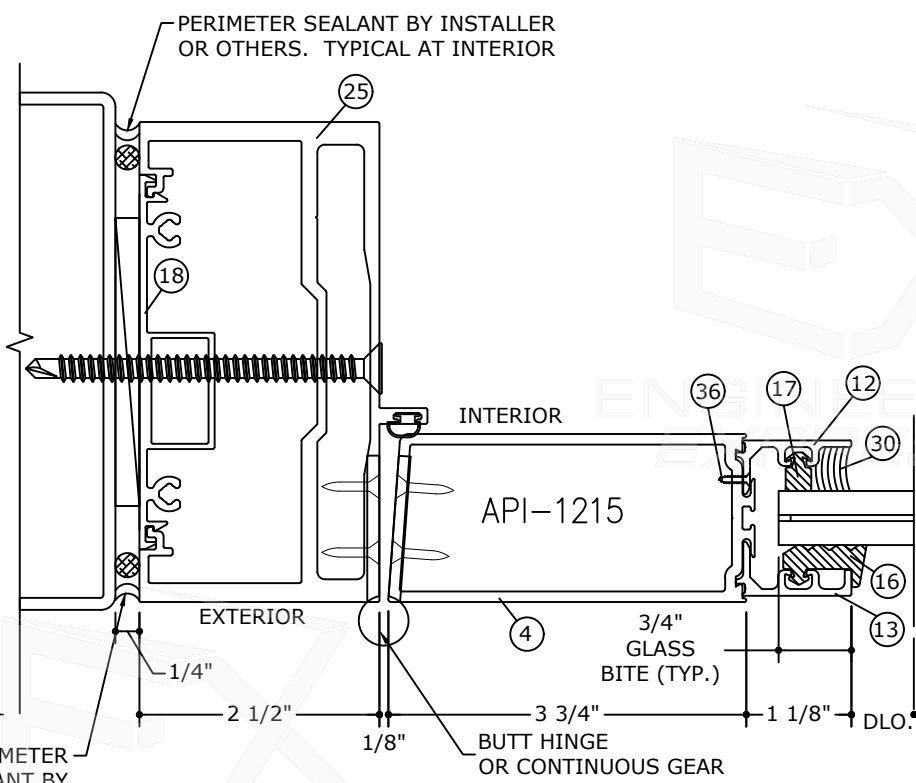
PE SEAL REQUIRED

FL

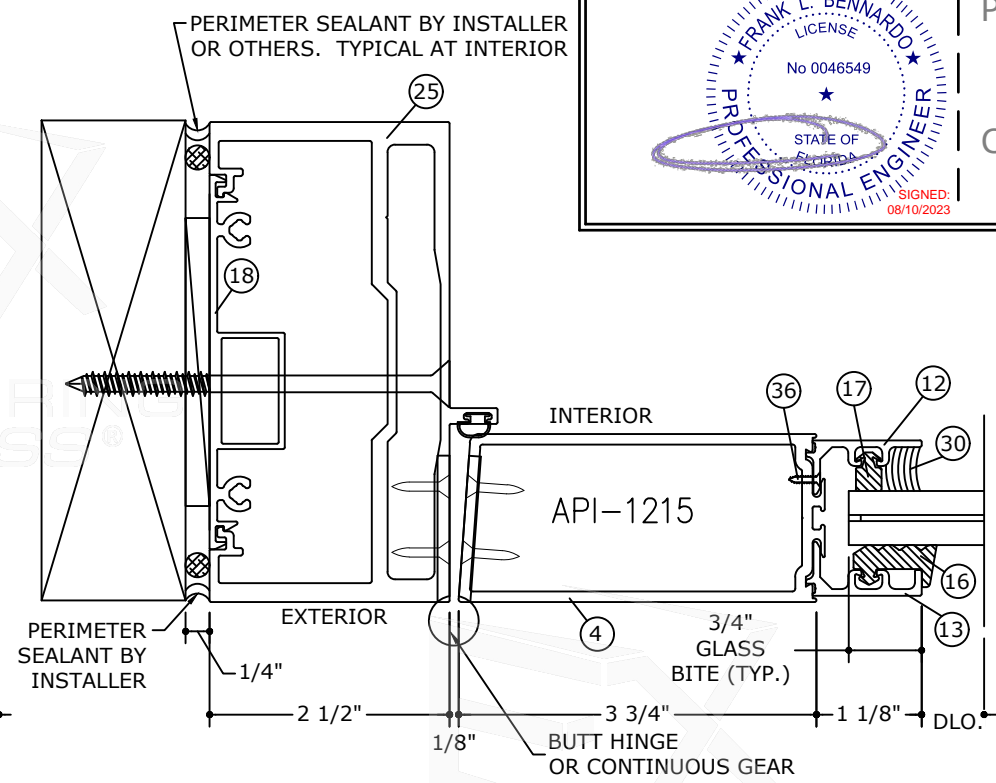
COPIES NOT VALID FOR PERMIT



1 DOOR JAMB DETAIL
9 INTO CONCRETE
6" = 1'-0"

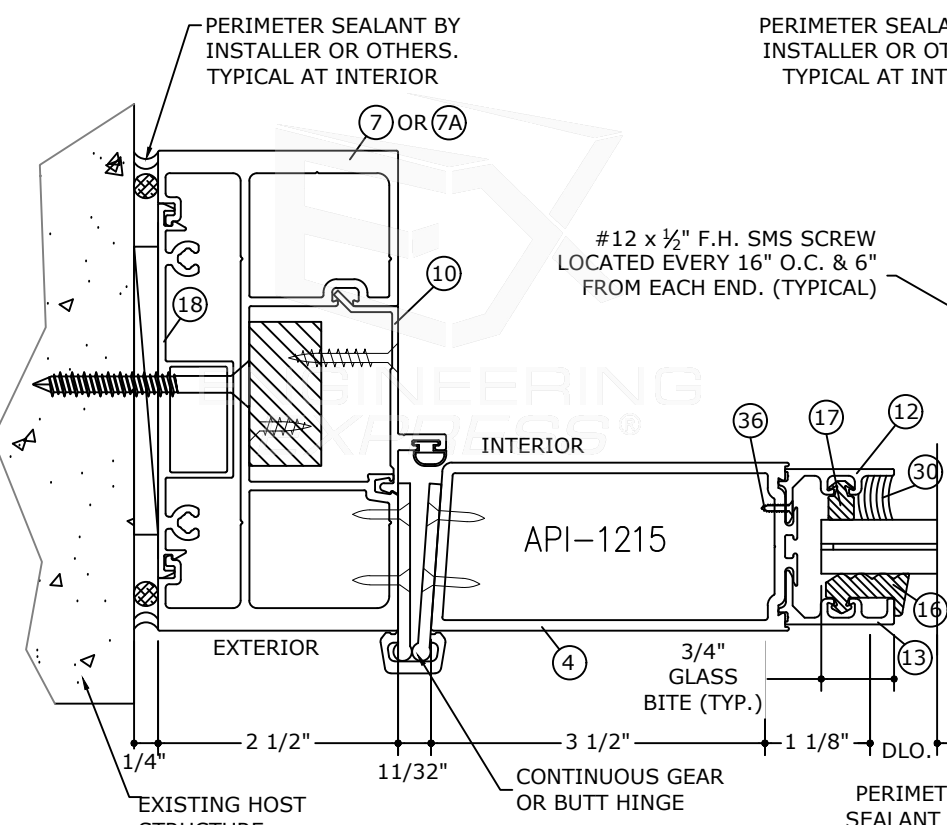


1A DOOR JAMB DETAIL
9 INTO METAL STRUCTURES
6" = 1'-0"

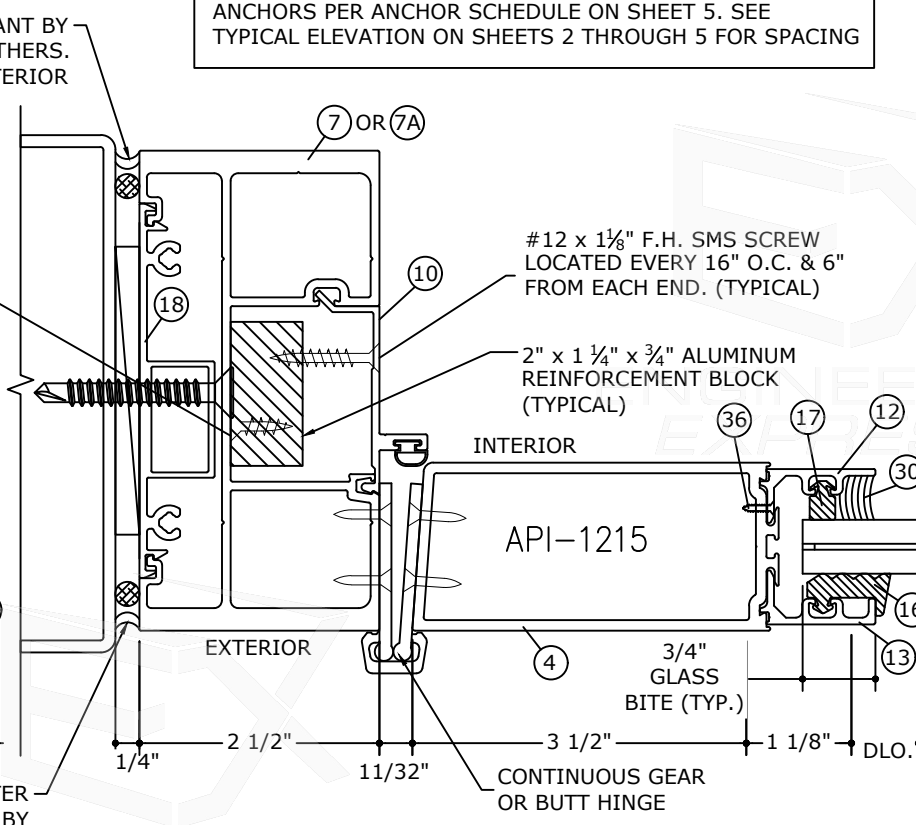


1B DOOR JAMB DETAIL
9 INTO WOOD STRUCTURES
6" = 1'-0"

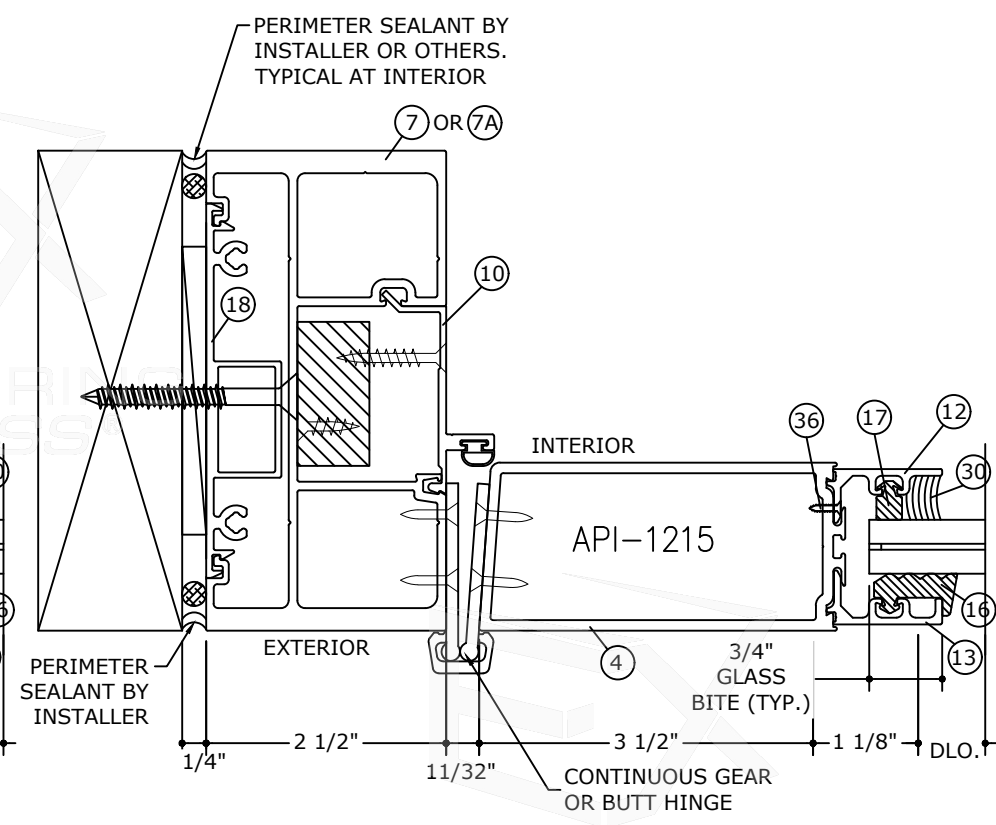
NOTE:
ANCHORS PER ANCHOR SCHEDULE ON SHEET 5. SEE
TYPICAL ELEVATION ON SHEETS 2 THROUGH 5 FOR SPACING



2 DOOR JAMB DETAIL
9 INTO CONCRETE
6" = 1'-0"



2A DOOR JAMB DETAIL
9 INTO METAL STRUCTURES
6" = 1'-0"



2B DOOR JAMB DETAIL
9 INTO WOOD STRUCTURES
6" = 1'-0"

FL 15937.1

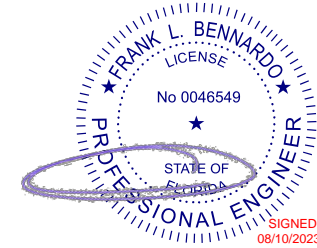
ENGINEERING EXPRESS
POSTAL ADDRESS:
401 W. ATLANTIC AVE RIO BOX 219
DELRAY BEACH, FL 33444
ENGINEERINGEXPRESS.COM

AMERICAN PRODUCTS, INC.
13909 LYNMAR BLVD.
TAMPA, FL 33626
PH: (813) 925-0144 / FAX: (813) 925-1414
SERIES 2500 GLAZED COMMERCIAL DOOR WITH TRANSCOM
FLORIDA BUILDING CODE EIGHTH EDITION (2023)
FLORIDA STATEWIDE APPROVAL (FSA FL#15937.1)

REMARKS	DRWN	CHKD	DATE
FBC 2020 (21-38298)	TAE	AJP	03/17/21
FBC 2023 UPDATE	ISQ	RS	07/31/23

23-63506
SCALE: NTS UNLESS NOTED

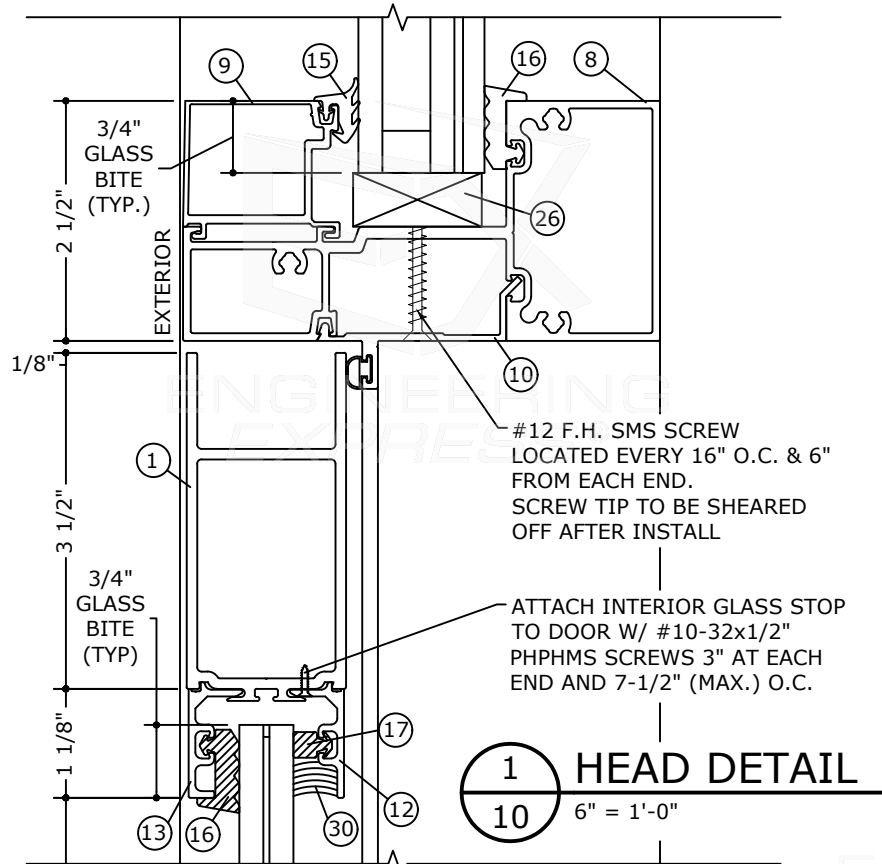
c:\users\sam\engineering\express\production - documents\projects\23-123-63506 2023 product fbc update fl15937\work\drawings & cad\23-63506 series 2500 fl15937.1.dwg SAM 8/8/2023 2:28 PM



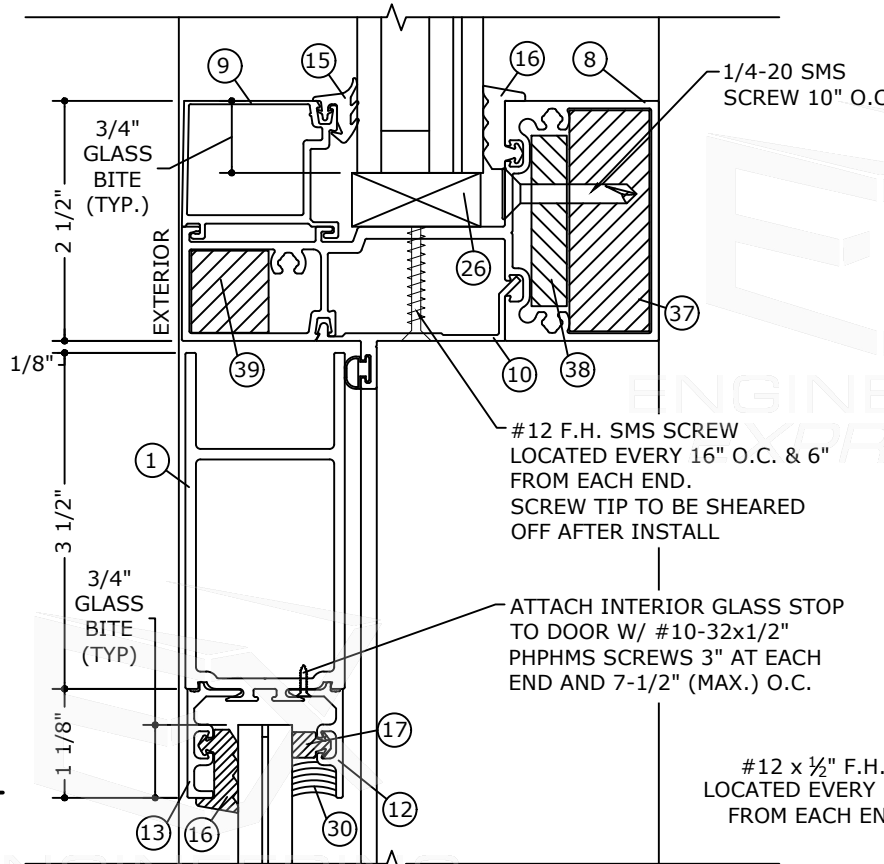
PE SEAL REQUIRED

FL

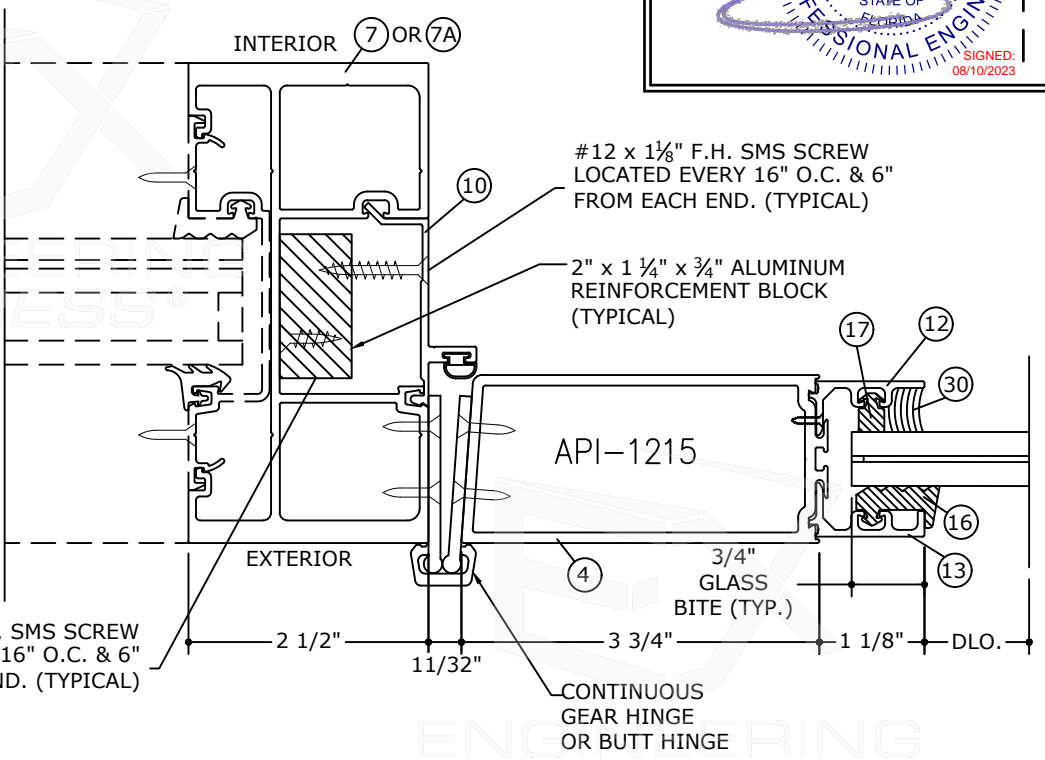
COPIES NOT VALID FOR PERMIT



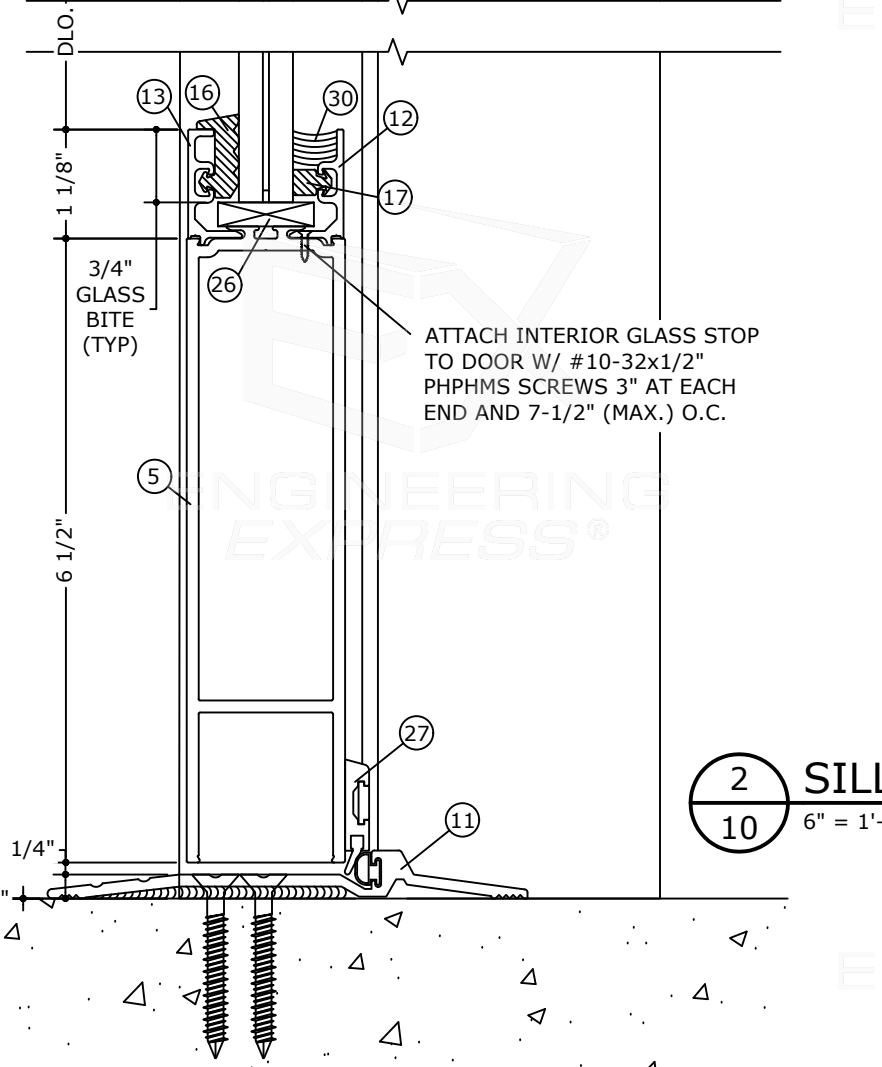
1 HEAD DETAIL
10 6" = 1'-0"



1A HEAD DETAIL
10 6" = 1'-0"

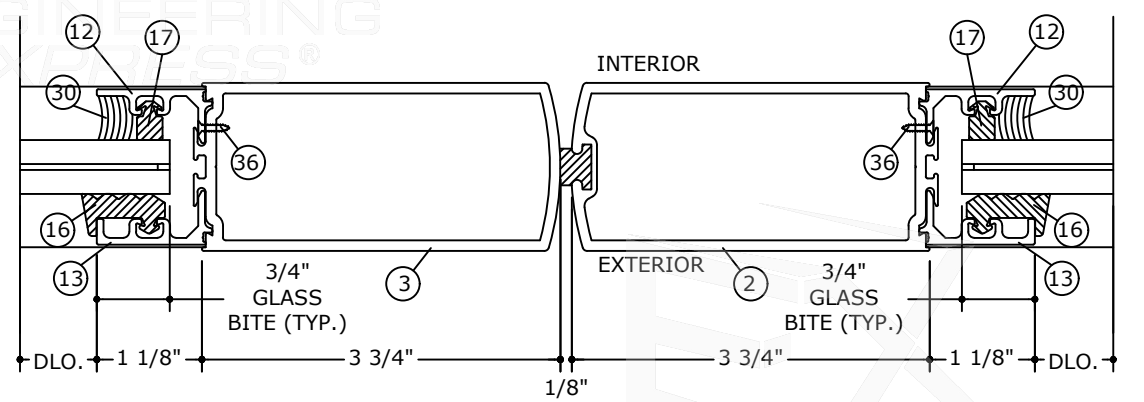


3 DOOR JAMB W/ SIDELITE DETAIL
10 9" = 1'-0"



2 SILL DETAIL
10 6" = 1'-0"

NOTE:
ANCHORS PER ANCHOR SCHEDULE ON SHEET 5. SEE TYPICAL ELEVATION ON SHEETS 2 THROUGH 5 FOR SPACING



4 DOOR MEETING STILES DETAIL
10 6" = 1'-0"

FL 15937.1

ENGINEERING EXPRESS
POSTAL ADDRESS:
401 W. ATLANTIC AVE R10 BOX 219
DELRAY BEACH, FL 33444
ENGINEERINGEXPRESS.COM

AMERICAN PRODUCTS, INC.
13909 LYNMAR BLVD.
TAMPA, FL 33626
PH: (813) 925-0144 / FAX: (813) 925-1414
SERIES 2500 GLAZED COMMERCIAL DOOR WITH TRANSOM
FLORIDA BUILDING CODE EIGHTH EDITION (2023)
FLORIDA STATEWIDE APPROVAL (FSA FL#15937.1)

REMARKS	DRWN	CHKD	DATE
FBC 2020 (21-38298)	TAE	AJP	03/17/21
FBC 2023 UPDATE	SQ	RS	07/31/23

COPYRIGHT ENGINEERING EXPRESS

23-63506

SCALE: NTS UNLESS NOTED

10 OF 14

c:\users\sam\engineering\express\production - documents\projects\23-123-63506 2023 product fbc update fl15937\work\drawings & cad\23-63506 series 2500 fl15937.1.dwg

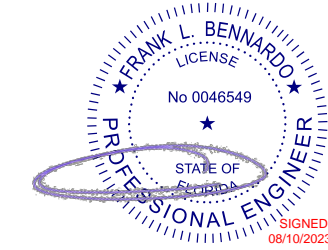
c:\users\sam\engineering express\production - documents\projects\23-123-63506 2023 product fbc update fl15937\work\drawings & cad\23-63506 series 2500 fl15937.1.dwg

8/8/2023 2:28 PM SAM

PARTS LIST

FRANK BENNARDO, PE
PE# 46549 CA# 9885

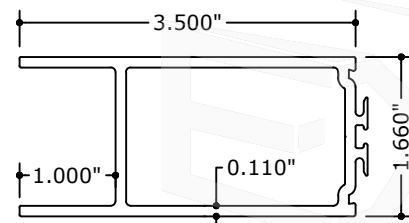
AUGUST 8, 2023



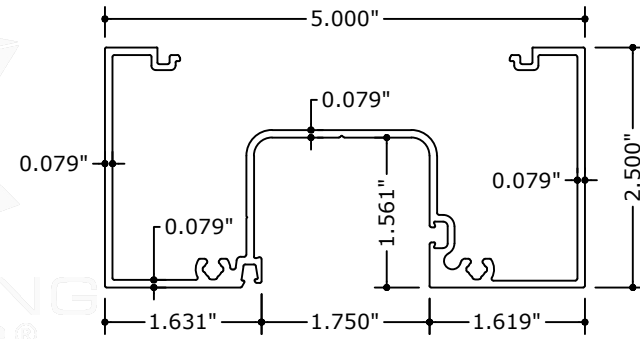
PE SEAL REQUIRED

FL

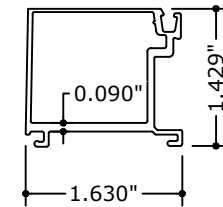
COPIES NOT VALID FOR PERMIT



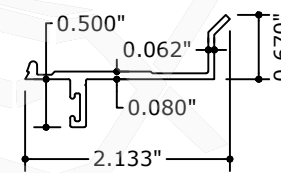
① API-1203
3 1/2" TOP RAIL



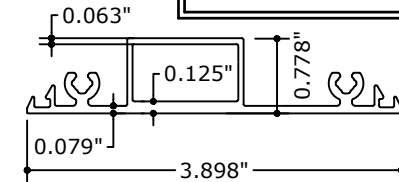
⑥ API-2510
OPEN BACK HORIZONTAL



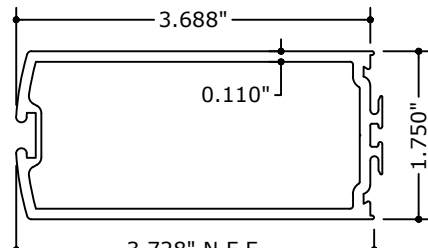
⑨ API-2525
GLASS STOP



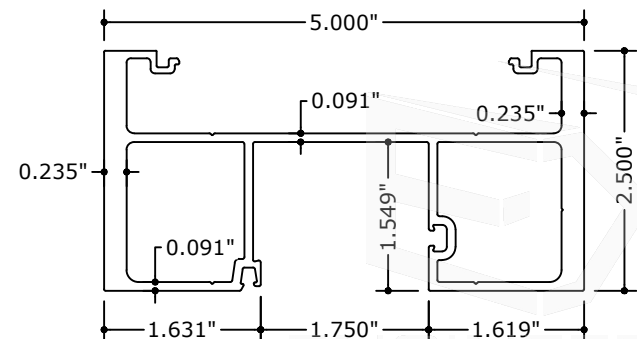
⑩ API-2582
SNAP IN DOOR STOP



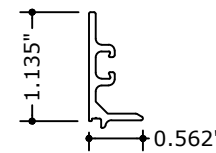
⑱ API-2546
REINFORCED FLAT FILLER



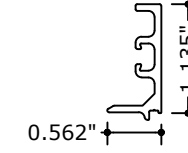
② API-1216
MEDIUM ROUNDED
STILE WITH AST



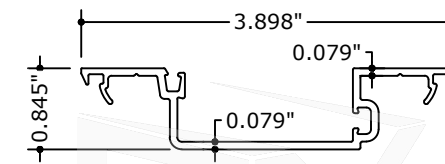
⑦ API-2564
HEAVY VERTICAL



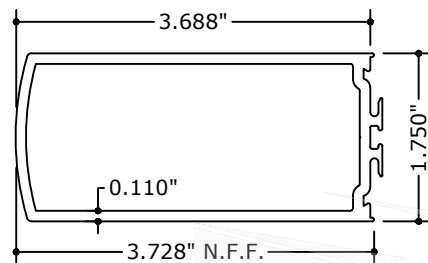
⑫ API-2537-I
1/16" INTERIOR GLASS
STOP



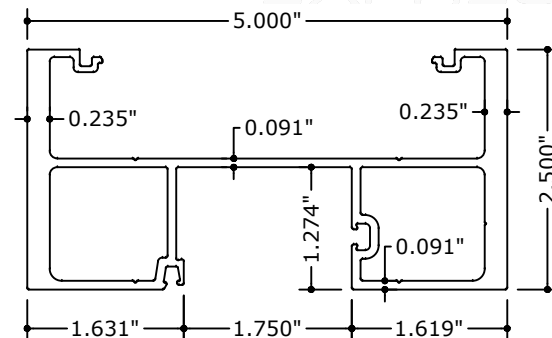
⑬ API-2537-E
1/16" EXTERIOR GLASS
STOP



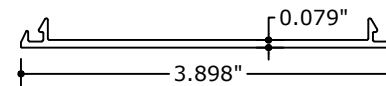
⑳ API-2511
SHALLOW POCKET



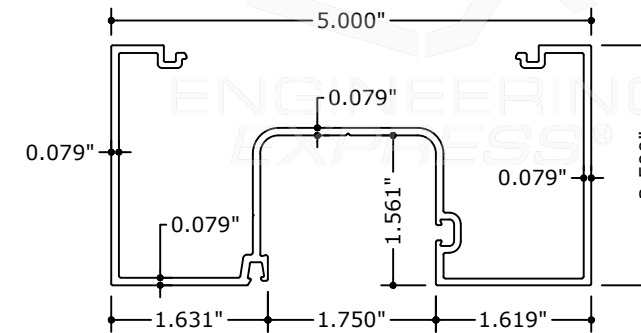
③ API-1217
MEDIUM ROUNDED
STILE



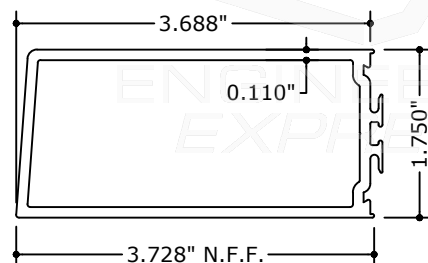
⑦A API-2564-A
ALTERNATE MULLION



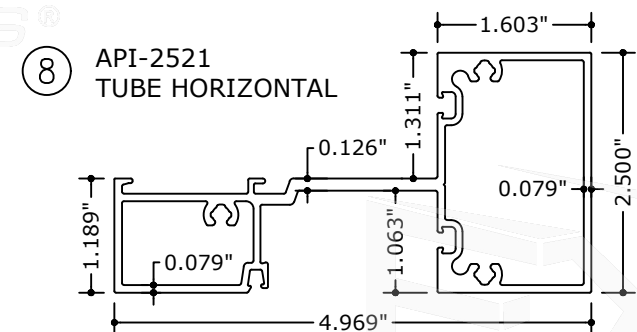
⑭ API-2545



㉒ API-2512
OPEN BACK VERTICAL



④ API-1215
MEDIUM ROUNDED
STILE



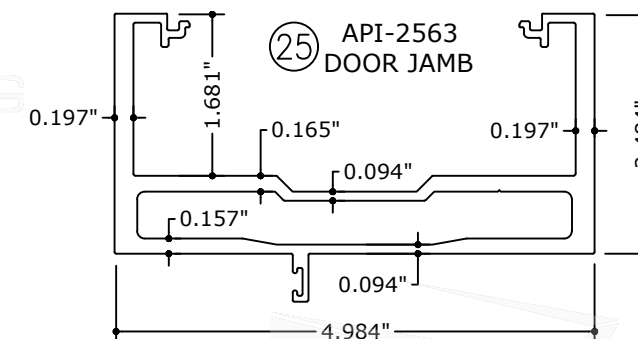
⑧ API-2521
TUBE HORIZONTAL



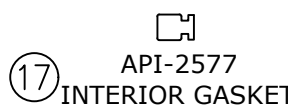
⑮ API-2577
EXTERIOR GASKET
(STOREFRONT)



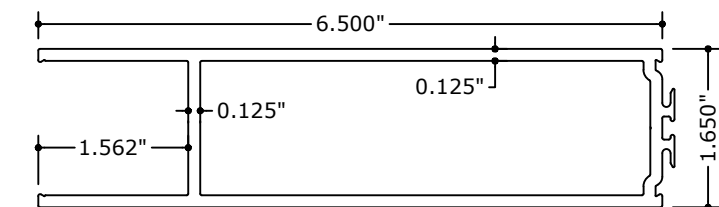
⑯ API-2577
EXTERIOR GASKET



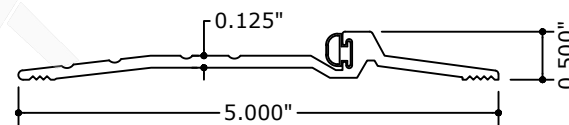
㉕ API-2563
DOOR JAMB



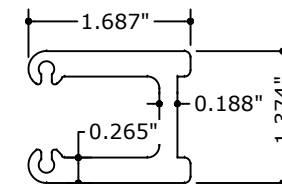
⑰ API-2577
INTERIOR GASKET



⑤ API-1213
6 1/2" RAIL



⑪ PEMCO 2005AV
NO WATER RATED



㉔ API-2546
SHEAR BLOCK

NOTE:
EXTRUSIONS NOT TO SCALE.

FL 15937.1

ENGINEERING EXPRESS
POSTAL ADDRESS:
401 W. ATLANTIC AVE R10 BOX 219
DELRAY BEACH, FL 33444
ENGINEERINGEXPRESS.COM

AMERICAN PRODUCTS, INC.
13909 LYNMAR BLVD.
TAMPA, FL 33626
PH: (813) 925-0144 / FAX: (813) 925-1414
SERIES 2500 GLAZED COMMERCIAL DOOR WITH TRANSOM
FLORIDA BUILDING CODE EIGHTH EDITION (2023)
FLORIDA STATEWIDE APPROVAL (FSA FL#15937.1)

REMARKS	DRWN	CHKD	DATE
FBC 2020 (21-38298)	TAE	AJP	03/17/21
FBC 2023 UPDATE	SQ	RS	07/31/23

COPYRIGHT ENGINEERING EXPRESS

23-63506

SCALE: NTS UNLESS NOTED

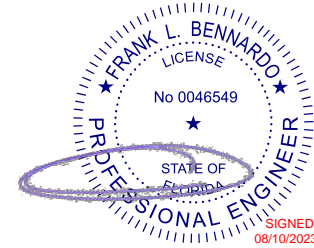
11 OF 14

c:\users\sam\engineering\express\production - documents\projects\23-123-63506\2023 product fbc update fl15937\work\drawings & cad\23-63506 series 2500 fl15937.1.dwg

PARTS LIST

FRANK BENNARDO, PE
PE# 46549 CA# 9885

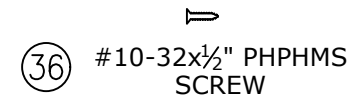
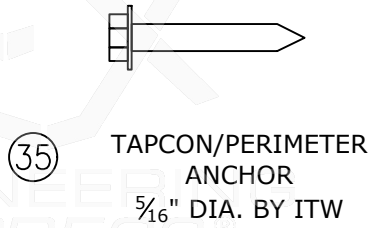
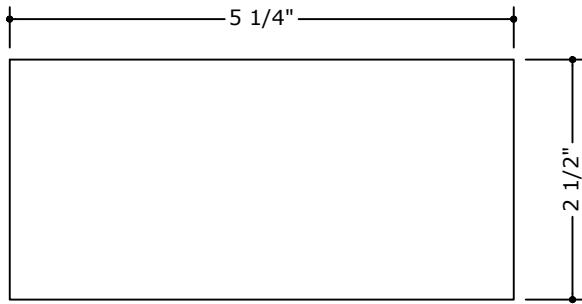
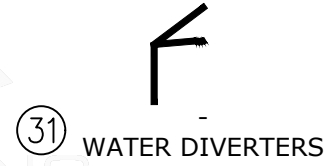
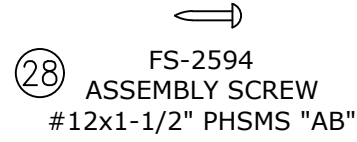
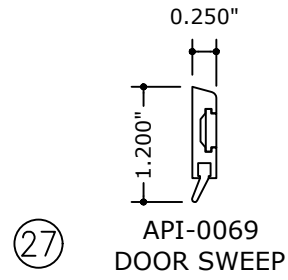
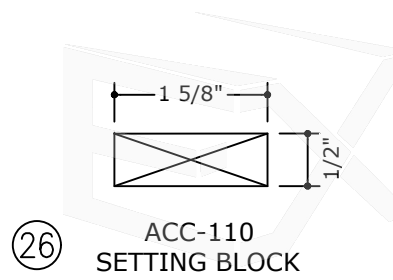
AUGUST 8, 2023



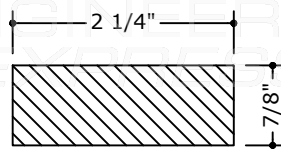
PE SEAL REQUIRED

FL

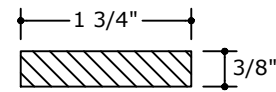
COPIES NOT VALID FOR PERMIT



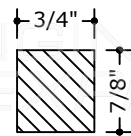
③② API-2550-EC END DAM



③⑦ ALUMINUM REINFORCEMENT



③⑧ ALUMINUM REINFORCEMENT



③⑨ ALUMINUM REINFORCEMENT

NOTE:
EXTRUSIONS NOT TO SCALE.

FL 15937.1

ENGINEERING EXPRESS
 POSTAL ADDRESS:
 401 W. ATLANTIC AVE R10 BOX 219
 DELRAY BEACH, FL 33444
 ENGINEERINGEXPRESS.COM

AMERICAN PRODUCTS, INC.
 13909 LYNMAR BLVD.
 TAMPA, FL 33626
 PH: (813) 925-0144 / FAX: (813) 925-1414
 SERIES 2500 GLAZED COMMERCIAL DOOR WITH TRANOM
 FLORIDA BUILDING CODE EIGHTH EDITION (2023)
 FLORIDA STATEWIDE APPROVAL (FSA FL#15937.1)

REMARKS	DRWN	CHKD	DATE
FBC 2020 (21-38298)	TAE	AJP	03/17/21
FBC 2023 UPDATE	SQ	RS	07/31/23

COPYRIGHT ENGINEERING EXPRESS®

23-63506

SCALE: NTS UNLESS NOTED

c:\users\sam\engineering\express\production - documents\projects\23-123-63506 2023 product fbc update fl15937\work\drawings & cad\23-63506 series 2500 fl15937.1.dwg

FRANK BENNARDO, PE
PE# 46549 CA# 9885

AUGUST 8, 2023

PE SEAL REQUIRED

FL

COPIES NOT VALID FOR PERMIT

SIGNED: 08/10/2023

Bill of Materials			
	Part	Material	Part No.
1	3 1/2" TOP RAIL	ALU 6063-T6	API-1203
2	MEDIUM ROUNDED STILE W/ AST	ALU 6063-T6	API-1216
3	MEDIUM ROUNDED STILE	ALU 6063-T6	API-1217
4	MEDIUM ROUNDED STILE	ALU 6063-T6	API-1215
5	6 1/2" RAIL	ALU 6063-T6	API-1213
6	OPEN BACK HORIZONTAL	ALU 6063-T6	API-2510
7	HEAVY VERTICAL	ALU 6063-T6	API-2564
8	TUBE HORIZONTAL	ALU 6063-T6	API-2521
9	GLASS STOP	ALU 6063-T6	API-2525
10	SNAP IN DOOR STOP	ALU 6063-T6	API-2582
11	1/2" X 5" X 8' THRESHOLD	ALU 6063-T6	2005AV
12	1/16" INTERIOR GLASS STOP	ALU 6063-T6	API-2537-I
13	1/16" EXTERIOR GLASS STOP	ALU 6063-T6	API-2537-E
14	FLAT FILLER	ALU 6063-T6	API-2545
15	EXTERIOR GASKET (STOREFRONT) PART#G-150	GS-2575	API-2577
16	EXTERIOR GASKET 1" NON IMPACT PART#G-150	GS-2570	API-2577-E
17	INTERIOR GASKET PART#G-150	GS-2576	API-2577-I
18	REINFORCED FLAT FILLER	ALU 6063-T6	API-2546
19	OPEN BACK SILL (NOT USED)	ALU 6063-T6	API-2520
20	SUBSILL (NOT USED)	ALU 6063-T6	API-2550
21	SHALLOW POCKET	ALU 6063-T6	API-2511
22	OPEN BACK VERTICAL	ALU 6063-T6	API-2512
23	1/16" POCKET REDUCER - (NOT USED)	ALU 6063-T6	API-2581
24	SHEAR BLOCK	ALU 6063-T6	API-2546
25	DOOR FRAME	ALU 6063-T6	API-2563
26	SETTING BLOCKS	-	ACC 110
27	DOOR SWEEP	-	API-2500-DS
28	SCREW SPLINE SCREW #12x1-1/2" PHSMS "AB"	-	FS-2594
29	(NOT USED)	-	-
30	DOWSIL 995	SILICONE	-
31	WATER DIVERTERS	-	API-2500-WD
32	END DAM	-	API-2550-EC
34	(NOT USED)	-	-
35	TAPCON/PERIMETER ANCHOR 5/16" DIA.	-	-
36	#10-32x1#2" PHPHMS SCREW	-	-
37	#12 FH SMS SCREW	-	-
38	2 1/4"x 7/8" REINFORCEMENT	ALU 6063-T6	-
39	1 3/4"x 3/8" REINFORCEMENT	ALU 6063-T6	-
40	3/4"x 7/8" REINFORCEMENT	ALU 6063-T6	-

NOTE: SETTING BLOCKS TO BE 70 +/- 5 DUROMETER CENTERED AT 1/4 POINTS

LOCKING / EXIT DEVICE

Quantity	Part Number	Finish	Description	Vendor
1	MS1851SW-310-628	Clear	Deadbolt Lock Radius w/ weather	Adams Rite
1	4015-184B	-	Threshold bolt (active door)	Adams Rite
1	4016-30-02	-	2-Point Lock (Header Bolt)	Adams Rite
2	FB-2210A-18	Clear	Flushbolts (Clear)	API
1	G88-11-48	Clear	Exit Device	Adams Rite
1	2086	Clear	Exit Device	Jackson

Cylinders and Thumb Turns

Quantity	Part Number	Finish	Description	Vendor
1	4066-130	Clear	Thumbturn (Clear)	Adams Rite
1	4036-01-628	Clear	Standard Cylinder (Clear)	Adams Rite

Hinging Hardware

Quantity	Part Number	Finish	Description	Vendor
4	1191	US32D	4-1/2" x 4" Hinge	Hager
1	780-112-95	Clear	95° Continuous hinge	Hager
8	951UL	Mill	Butt Hinge Back-up Plate	RAS

Push / Pull Hardware

Quantity	Part Number	Finish	Description	Vendor
2	BF15747-45"	628	10" off set w/ 45" Push	Rockwood

Misc Hardware

NOTE: ALTERNATE HARDWARE MAY BE USED UNDER SITE SPECIFIC ENGINEERING

FL 15937.1

EX ENGINEERING EXPRESS

AMERICAN PRODUCTS, INC.

13909 LYNMAR BLVD.
TAMPA, FL 33626

PH: (813) 925-0144 / FAX: (813) 925-1414

SERIES 2500 GLAZED COMMERCIAL DOOR WITH TRANSCOM
FLORIDA BUILDING CODE EIGHTH EDITION (2023)
FLORIDA STATEWIDE APPROVAL (FSA FL#15937.1)

REMARKS	DRWN	CHKD	DATE
FBC 2020 (21-39298)	TAE	AJP	03/17/21
FBC 2023 UPDATE	SQ	RS	07/31/23

COPYRIGHT ENGINEERING EXPRESS®

23-63506

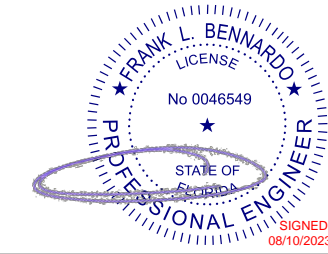
SCALE: NTS UNLESS NOTED

13 OF 14

c:\users\sam\engineering express\production - documents\projects\23-123-63506 2023 product fbc update fl15937\work\drawings & cad\23-63506 series 2500 fl15937.1.dwg

FRANK BENNARDO, PE
PE# 46549 CA# 9885

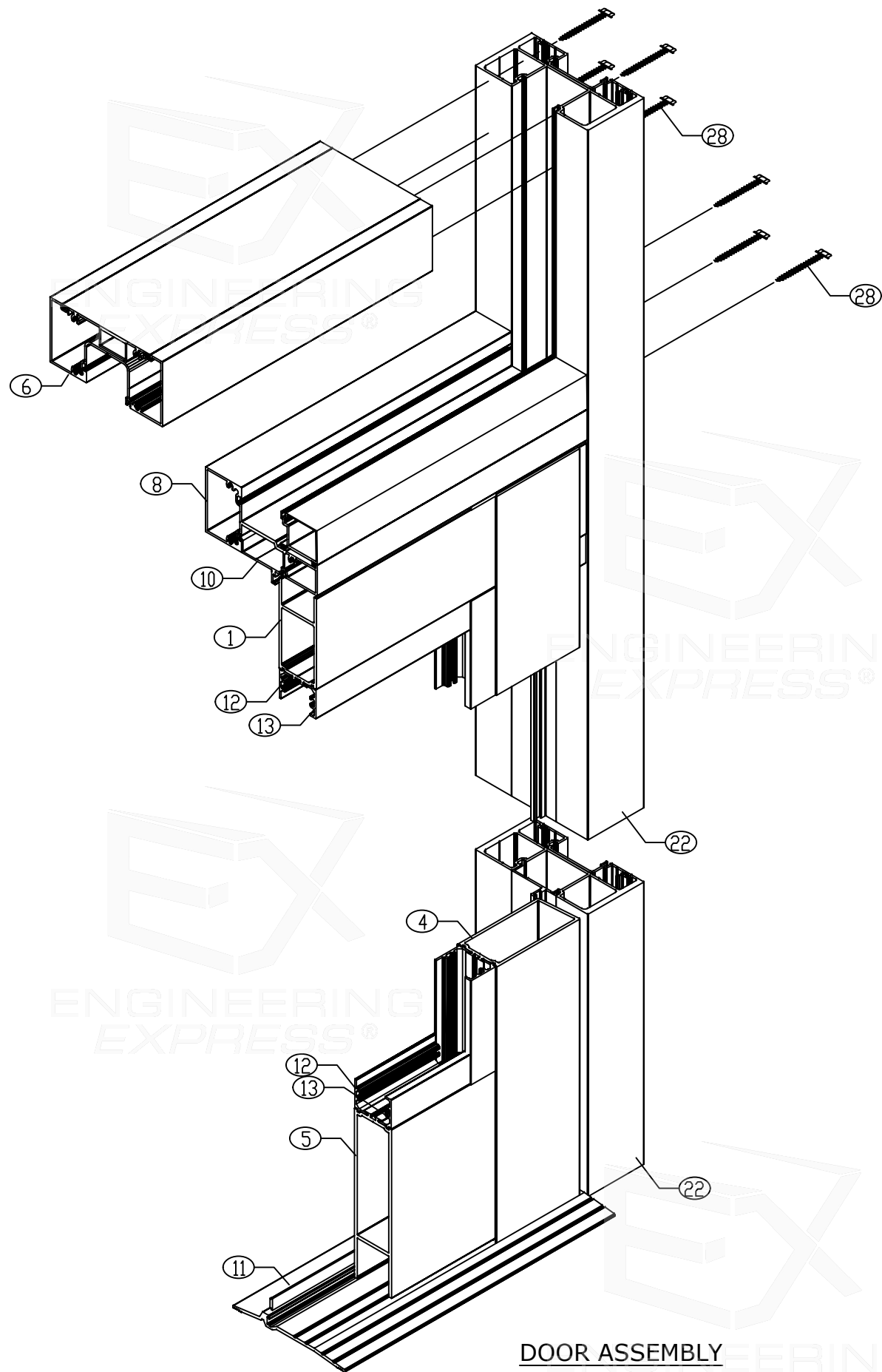
AUGUST 8, 2023



PE SEAL REQUIRED

FL

COPIES NOT VALID FOR PERMIT



NOTE:
SEAL ALL CORNERS WITH
DOWSIL 795 SILICONE

DOOR ASSEMBLY

FL 15937.1

ENGINEERING EXPRESS
POSTAL ADDRESS:
401 W. ATLANTIC AVE R10 BOX 219
DELRAY BEACH, FL 33444
ENGINEERINGEXPRESS.COM

AMERICAN PRODUCTS, INC.
13909 LYNMAR BLVD.
TAMPA, FL 33626
PH: (813) 925-0144 / FAX: (813) 925-1414
SERIES 2500 GLAZED COMMERCIAL DOOR WITH TRANSOM
FLORIDA BUILDING CODE EIGHTH EDITION (2023)
FLORIDA STATEWIDE APPROVAL (FSA FL#15937.1)

REMARKS	DRWN	CHKD	DATE
FBC 2020 (21-39298)	TAE	AJP	03/17/21
FBC 2023 UPDATE	SQ	RS	07/31/23

COPYRIGHT ENGINEERING EXPRESS

23-63506

SCALE: NTS UNLESS NOTED