

# API-MC8000

## 48"x48"x6" CANTILEVERED CANOPY SHOP DRAWINGS

### BY AMERICAN PRODUCTS, INC (API)

#### DRAWING INDEX

SHEET NO.	SHEET NAME	REVISION/PAGES CHANGED					
		1	2	3	4	5	6
A000	COVER PAGE						
A100	PLAN / SECTION						
A101	SECTION / DETAILS						
A102	DETAILS						

**API**  
**AMERICAN PRODUCTS, INC.**  
 13909 LYNMAR BLVD.  
 TAMPA, FL 33626  
 PH. (813)925-0144  
 WWW.AMERICANPRODUCTS.COM  
 CONTACT: KERRI BEALS

API RECOMMENDS THAT THE NOTE BELOW APPEARS WITH STOREFRONT ELEVATIONS AND SECTION VIEW DETAILS IN YOUR DRAWINGS

STOREFRONT AND RELATED MATERIALS PROVIDED BY AMERICAN PRODUCTS, INC. (API). NO SUBSTITUTIONS WITHOUT WRITTEN CONSENT FROM STORE OWNER/ARCHITECT.  
 API (813)925-0144

SEAL:

#### FASTENER SCHEDULE

#	QTY.	DESCRIPTION
1	26	#12-14 x 1" Zinc HWH SDS #3 PT.
2	8	1/4"-20 x 1" PD PH Zinc Screw
2	16	1/4" x 3/4" O.D. Zinc Fender Washer
2	8	1/4" Zinc Medium Split Lock Washer
2	8	1/4"-20 Zinc Finish Hex Nut
3	32	3/8"-16 x 1 1/4" Zinc Hex Cap Screw
3	64	3/8" x 7/8" O.D. Zinc Fender Washer
3	32	3/8" x 7/8" O.D. Zinc Fender Washer
3	32	3/8"-16 Zinc Finished Hex Nut
4	4	1/2"-13 x 4" Zinc Hex Cap Screw
4	8	1/2" x 1 1/2" O.D. Zinc Fender Washer
4	4	1/2" Zinc Medium Split Lock Washer
4	4	1/2"-13 Zinc Finished Hex Nut

NOTES: 1) ALL NUMBERED FASTENERS LISTED ARE SUPPLIED BY API. ALL LETTERED FASTENERS LISTED ARE BY OTHERS. 2) EXPOSED FASTENERS SHALL BE PAINTED. 3) ANCHOR FASTENERS LISTED ARE SUGGESTED GC/INSTALLER SHALL VERIFY ANCHOR REQUIREMENTS.

#### FINISH SCHEDULE

ASSEMBLY	FINISH
CANOPY	T.B.D
--	--

NOTE: POWDER COAT BY API.

CUSTOMER NAME  
 ADDRESS  
 CITY, STATE, ZIP

DESCRIPTION:	1	2	3	4	5	6
	--	--	--	--	--	--

DATE:	1	2	3	4	5	6
	--	--	--	--	--	--

REV#:

DRAWING DATE: 2005  
 DRAWN BY: API CAD TEAM  
 PM: TBD

CONTENTS:  
 COVER PAGE

SHEET #:  
**A000**

JOB #: AAAO-000000

#### GENERAL NOTES

- ALL DIMENSIONS SHOWN SHALL BE VERIFIED BY CUSTOMER PRIOR TO FABRICATION.
- REQUEST FOR REVISIONS AFTER AMERICAN PRODUCTS, INC. (API) HAS BEEN RELEASED FOR FABRICATION MAY RESULT IN ADDITIONAL CHARGES FOR ENGINEERING, FABRICATION, HANDLING AND TRANSPORTATION. CHANGES MAY ADVERSELY AFFECT THE SCHEDULE.
- ANCHOR FASTENERS ARE BY OTHERS

#### SYMBOLS

NORTH ARROW	CUT LINE MARKER	FASTENER NUMBER
DETAIL CALL OUT	SECTION MARKER	ALIGN MARKER
ACM TAG	REVISION NUMBER	LEVEL TARGET
NAME SCALE		

#### CANOPY NOTES

- COLOR: T.B.D.
- CONTRACTOR TO CONFIRM ALL CANOPY DIMENSIONS.
- COORDINATE STEEL LOCATIONS SHOWN HEREIN WITH STEEL SHOP DRAWINGS
- EXCLUDES ALL WALL FASTENERS
- CONTRACTOR TO ENSURE UPPER BRACKET ASSEMBLY INSTALLED PLUMB, SQUARE, LEVEL AND IN ALIGNMENT PRIOR TO INSTALLATION OF ALUMINUM CANOPY
- CONTRACTOR TO ENSURE CANOPY ASSEMBLY PROPERLY SUPPORTED DURING HOISTING AND INSTALLATION
- REQUEST FOR REVISIONS AFTER AMERICAN PRODUCTS, INC. (API) HAS BEEN RELEASED FOR FABRICATION MAY RESULT IN ADDITIONAL CHARGES FOR ENGINEERING, FABRICATION, HANDLING AND TRANSPORTATION. CHANGES MAY ADVERSELY AFFECT THE SCHEDULE.

These shop drawings remain the property of American Products, Inc. (API) and contain proprietary, competitive information which if released to any party other than the intended recipient, could cause an undetermined amount of harm to American Products, Inc. (API). Any reproduction and distribution of said drawings without the express written consent of American Products, Inc. (API) is strictly prohibited. Any charge for shop drawings, paid or owed by the intended recipient to American Products, Inc. (API) is considered a rental charge for the right to utilize said drawings in order to conduct business with American Products, Inc. (API)

#### ABBREVIATIONS

VIF = VERIFY IN FIELD FS = FRAME SIZE DLO = DAY LIGHT OPENING DO = DOOR OPENING TYP = TYPICAL RO = ROUGH OPENING F.F = FINISHED FLOOR A.F.F = ABOVE FINISHED FLOOR BM = BENCHMARK	CS = CAP SCREW FH = FLAT HEAD FN = FINISHED NUT FW = FLAT WASHER FUH = FLAT UNDERCUT HEAD HWH = HEX WASHER HEAD MTH = MODIFIED TRUSS HEAD OA = OVERALL PD = PHILLIPS DRIVE	PT = POINT SDS = SELF-DRILLING SCREW SMS = SHEET METAL SCREW TBD = TO BE DETERMINED TCS = THREAD CUTTING SCREW UON = UNLESS OTHERWISE NOTED
---	--	--



AMERICAN

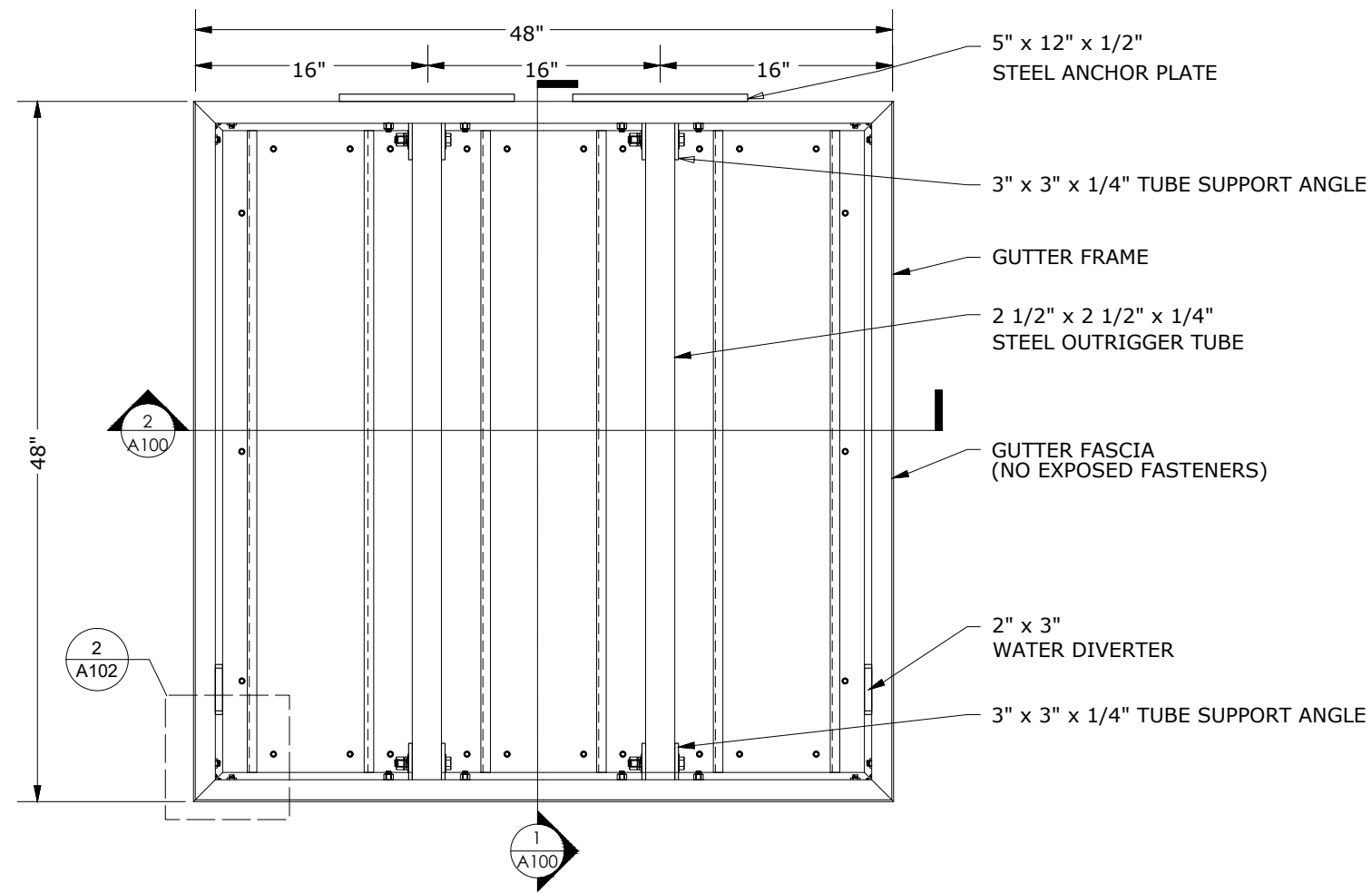
PRODUCTS, INC.

13909 LYNMAR BLVD.  
TAMPA, FL 33626  
PH. (813)925-0144  
WWW.AMERICANPRODUCTS.COM  
CONTACT: KERRI BEALS

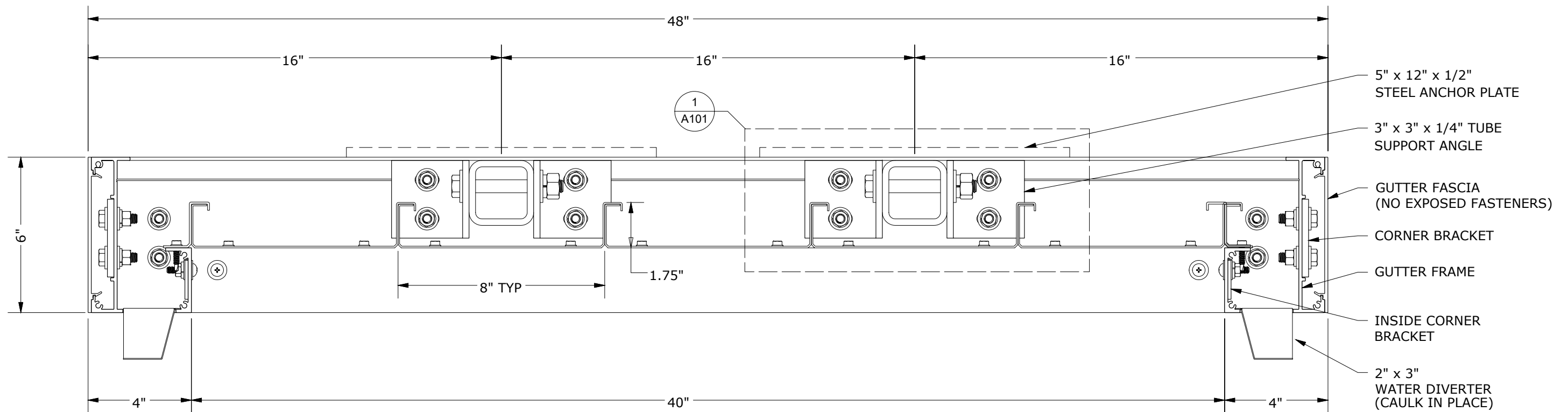
API RECOMMENDS THAT THE NOTE BELOW APPEARS WITH STOREFRONT ELEVATIONS AND SECTION VIEW DETAILS IN YOUR DRAWINGS

STOREFRONT AND RELATED MATERIALS PROVIDED BY AMERICAN PRODUCTS, INC. (API). NO SUBSTITUTIONS WITHOUT WRITTEN CONSENT FROM STORE OWNER/ARCHITECT. API (813)925-0144

SEAL:



1 CANOPY  
A100 PLAN 1" = 1'-0"



2 STOREFRONT  
A100 ELEVATION N.T.S.

CUSTOMER NAME

ADDRESS

CITY, STATE, ZIP

REV#	DATE	DESCRIPTION

DRAWING DATE: 2005  
DRAWN BY: API CAD TEAM  
PM: TBD

CONTENTS:  
PLAN-ELEVATION

SHEET #:

A100

JOB #: AAAO-000000



AMERICAN

PRODUCTS, INC.

13909 LYNMAR BLVD.  
TAMPA, FL 33626  
PH. (813)925-0144  
WWW.AMERICANPRODUCTS.COM  
CONTACT: KERRI BEALS

API RECOMMENDS THAT THE NOTE BELOW APPEARS WITH STOREFRONT ELEVATIONS AND SECTION VIEW DETAILS IN YOUR DRAWINGS

STOREFRONT AND RELATED MATERIALS PROVIDED BY AMERICAN PRODUCTS, INC. (API). NO SUBSTITUTIONS WITHOUT WRITTEN CONSENT FROM STORE OWNER/ARCHITECT. API (813)925-0144

SEAL:

CUSTOMER NAME

ADDRESS

CITY, STATE, ZIP

DESCRIPTION:

DATE:

REV#:

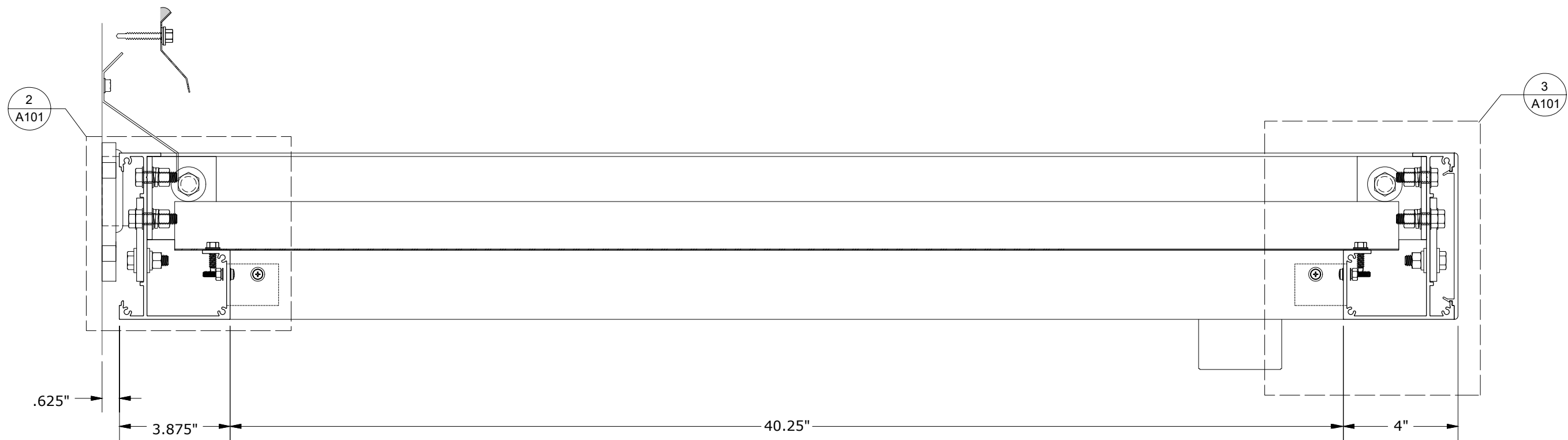
DRAWING DATE: 2005  
DRAWN BY: API CAD TEAM  
PM: TBD

CONTENTS:  
SECTION

SHEET #:

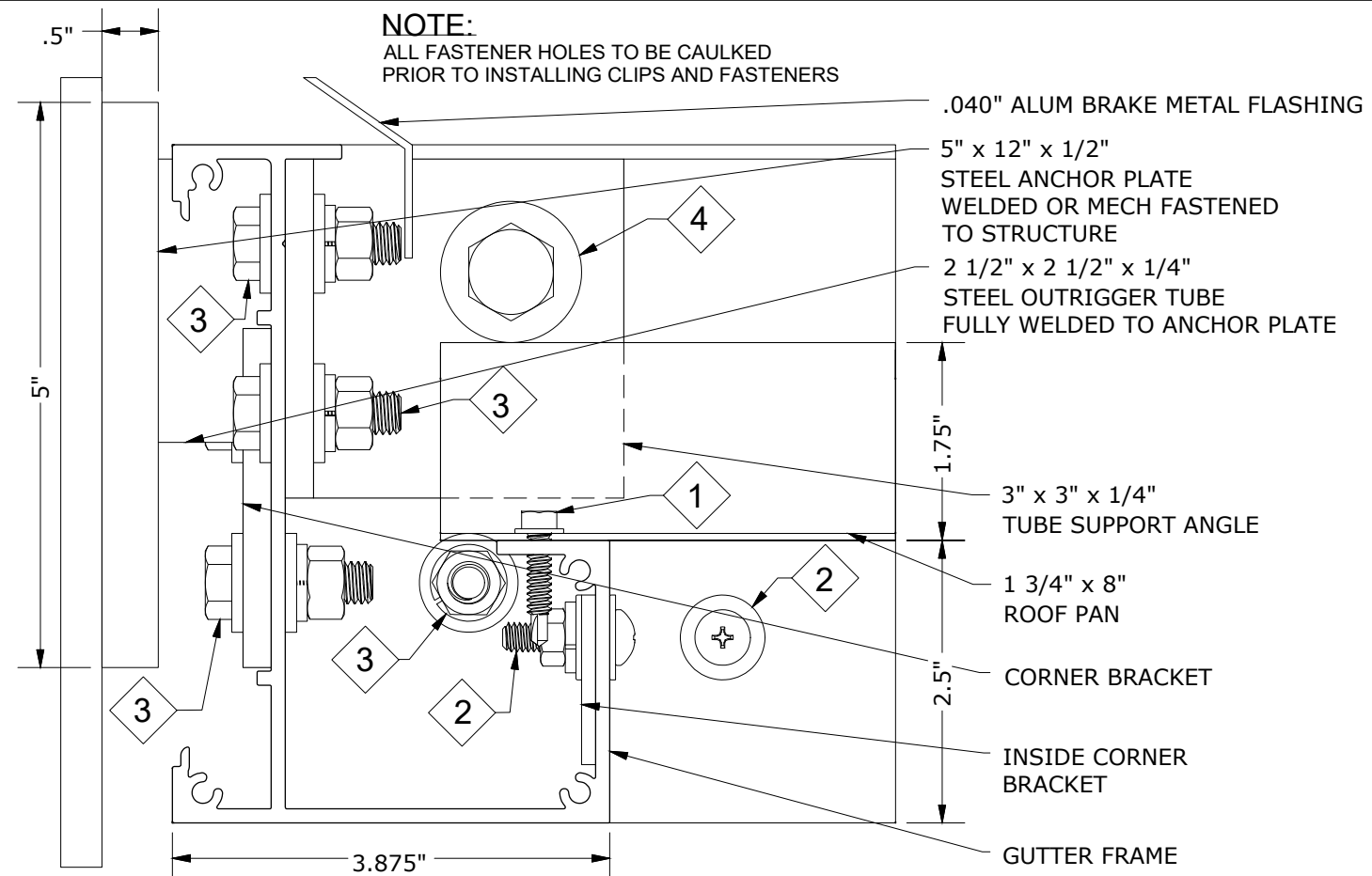
A101

JOB #: AAAO-000000



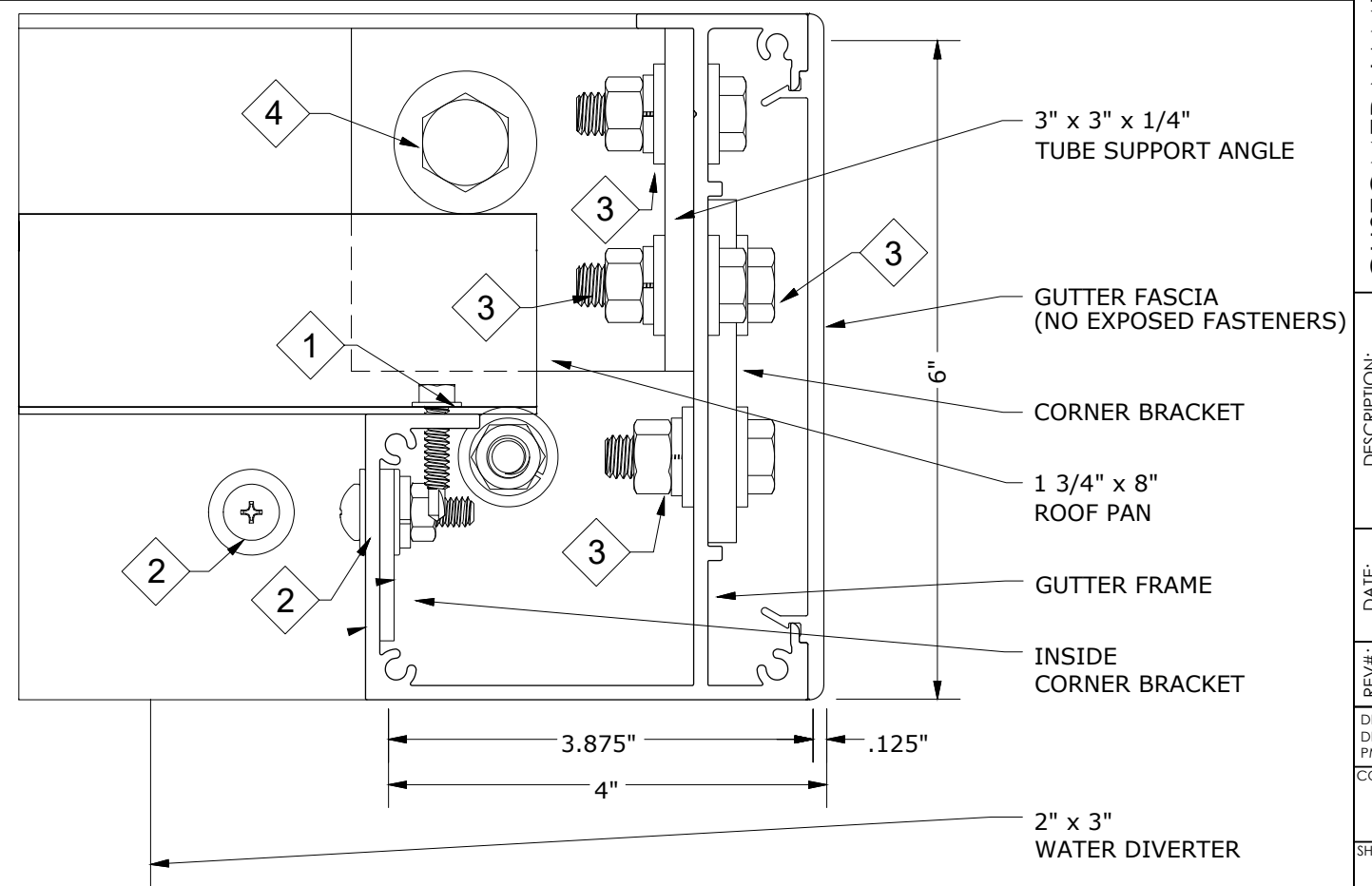
1 CANOPY SECTION  
A200 SECTION

3" = 1'-0"



2 DETAIL SECTION  
A101 SECTION

3" = 1'-0"



2 DETAIL SECTION  
A101 SECTION

3" = 1'-0"



AMERICAN

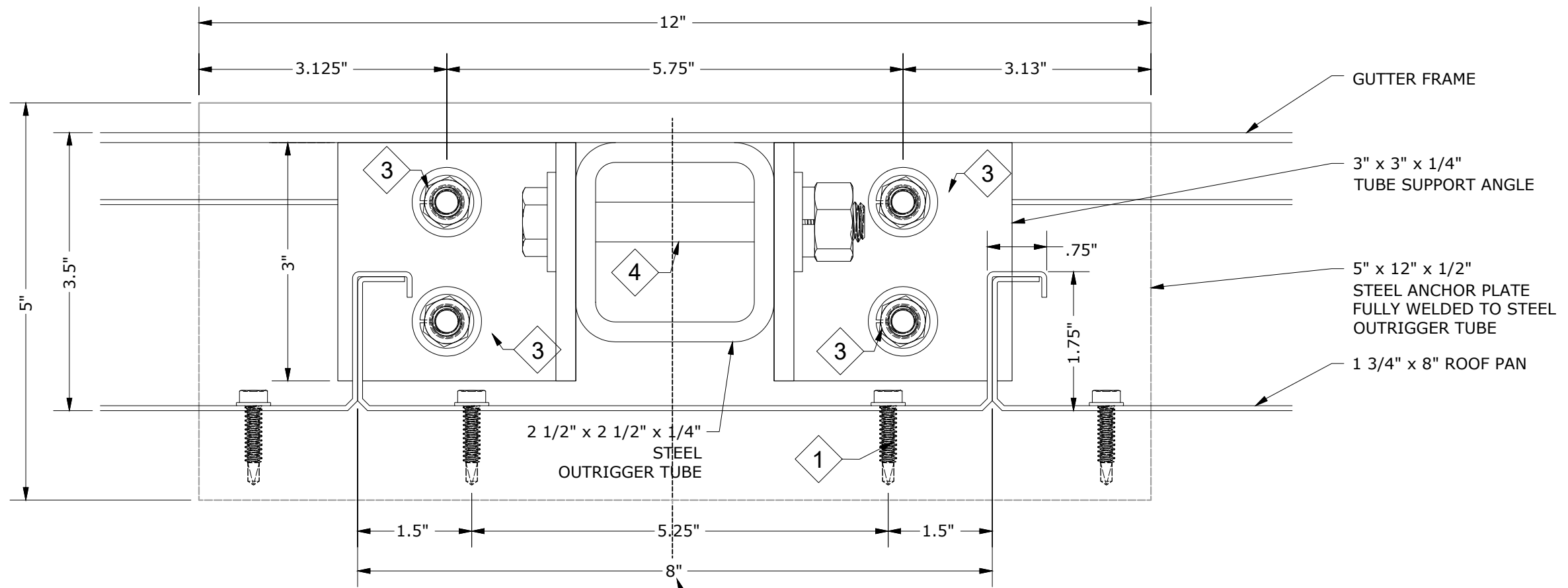
PRODUCTS, INC.

13909 LYNMAR BLVD.  
TAMPA, FL 33626  
PH. (813)925-0144  
WWW.AMERICANPRODUCTS.COM  
CONTACT: KERRI BEALS

API RECOMMENDS THAT THE NOTE BELOW APPEARS WITH STOREFRONT ELEVATIONS AND SECTION VIEW DETAILS IN YOUR DRAWINGS

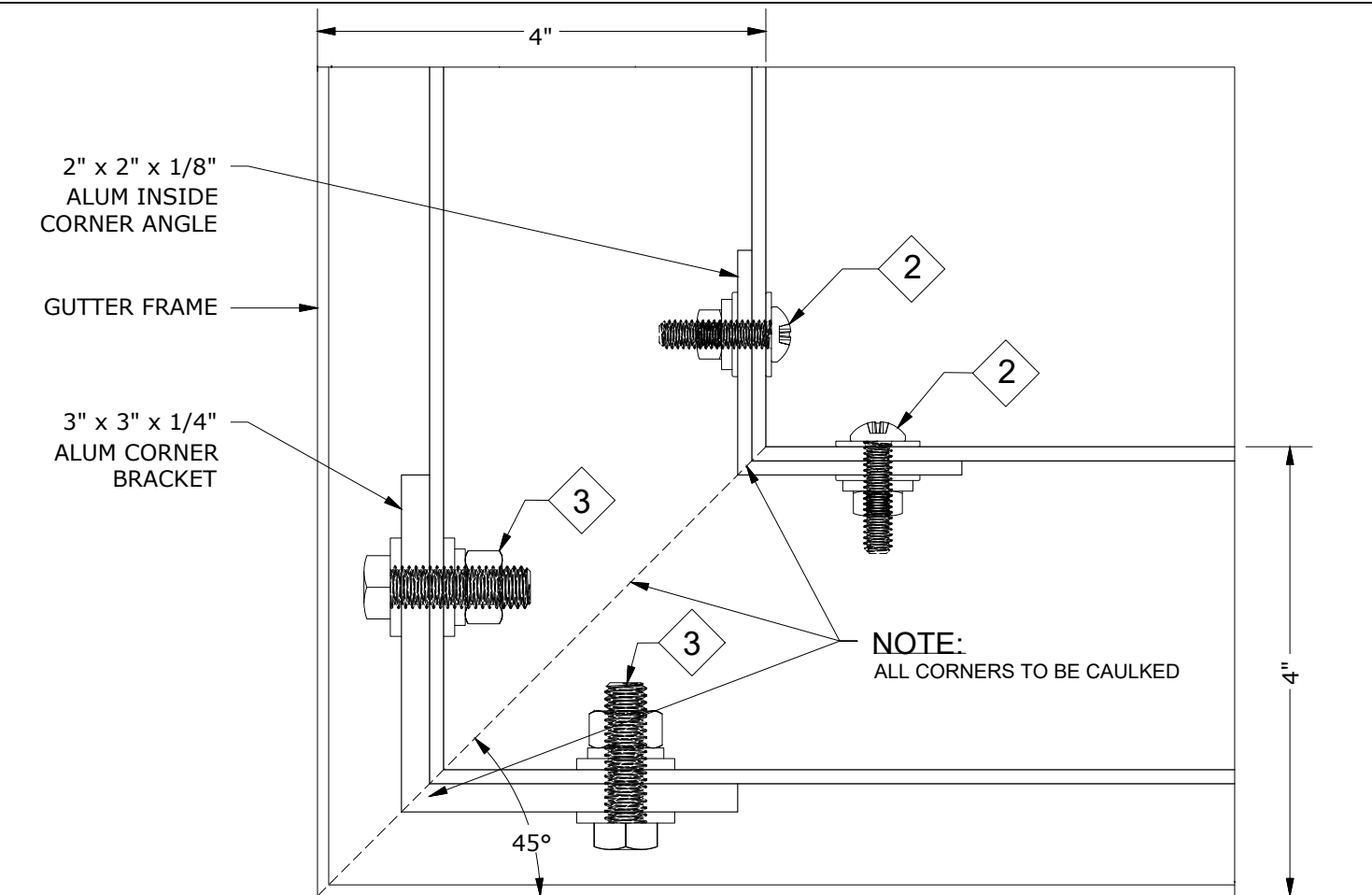
STOREFRONT AND RELATED MATERIALS PROVIDED BY AMERICAN PRODUCTS, INC. (API). NO SUBSTITUTIONS WITHOUT WRITTEN CONSENT FROM STORE OWNER/ARCHITECT. API (813)925-0144

SEAL:



NOTE: ROOF PANEL TO BE CENTERED WITH OUTRIGGER TUBE, TYP

1 SECTION @ OUTRIGGER  
A102 SECTION 3" = 1'-0"



2 CORNER DETAIL  
A102 PLAN 3" = 1'-0"

3 NOT USED  
A102 DETAIL N.T.S.

CUSTOMER NAME  
ADDRESS  
CITY, STATE, ZIP

REV#:	DATE:	DESCRIPTION:

DRAWING DATE: 2005  
DRAWN BY: API CAD TEAM  
PM: TBD

CONTENTS:  
DETAILS

SHEET #:

A102

JOB #: AAAO-000000