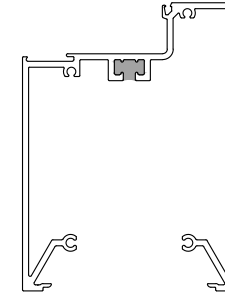
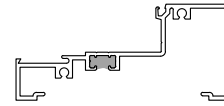
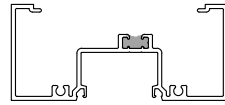


AMERICAN PRODUCTS, INC (API)

F2000T SYSTEM
THERMALLY BROKEN FLUSH GLAZE

LIST OF PARTS

PART #	DESCRIPTION
F20010-T	OPEN BACK HEAD / JAMB
F20020-T	OPEN BACK SILL / HORIZONTAL
F20080-T	6" SILL / HORIZONTAL
F20025	GLASS STOP (NON THERMAL)
F20060-T	4-1/2" ONE POCKET CORNER HALF LEFT
F20065-T	4-1/2" ONE POCKET CORNER HALF RIGHT
F20015-T	SHALLOW POCKET FILLER
F20050-T	SILL FLASHING
F20085-T	HEAD RECEPTOR
F20090-T	HEAD RECEPTOR (FACE, NON-THERMAL)
F20045-T	FLAT PERIMETER FILLER



F20010-T

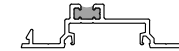
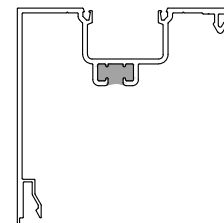
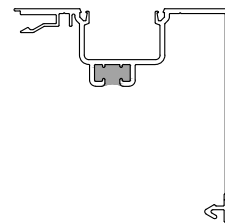
F20020-T

F20080-T

F20025-T

AVAILABLE FINISHES

FINISH API / US		DESCRIPTION
1101	US28	CLEAR ANODIZED
1801	US 313	DARK BRONZE ANODIZED
CLAD	US32D #4	BRUSHED STAINLESS STEEL
CLAD	US32 #8	POLISHED STAINLESS



F20060-T

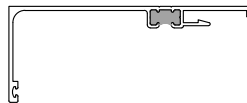
F20065-T

F20015-T

F20050-T

CUSTOM POWDER COAT

CUSTOM COLORS UPON REQUEST.



F20085-T

F20090-T

F20045-T

BASIC ORDERING INFORMATION:

(PART #)-(FINISH CODE)
EXAMPLE : F20010-1101

API RECOMMENDS THAT THIS NOTE APPEAR WITH STOREFRONT ELEVATIONS AND SECTION VIEW DETAILS IN YOUR DRAWINGS

STOREFRONT AND RELATED MATERIALS PROVIDED BY AMERICAN PRODUCTS, INC. (API). NO SUBSTITUTIONS WITHOUT WRITTEN CONSENT FROM STORE OWNER/ARCHITECT. API (813)925-0144

Customer: API IN-HOUSE

Assembly: Thermal Glaze for 1: Glass (Ext)

REV#:

DATE:

Drawn By: API CAD

Date: 08/06/2025

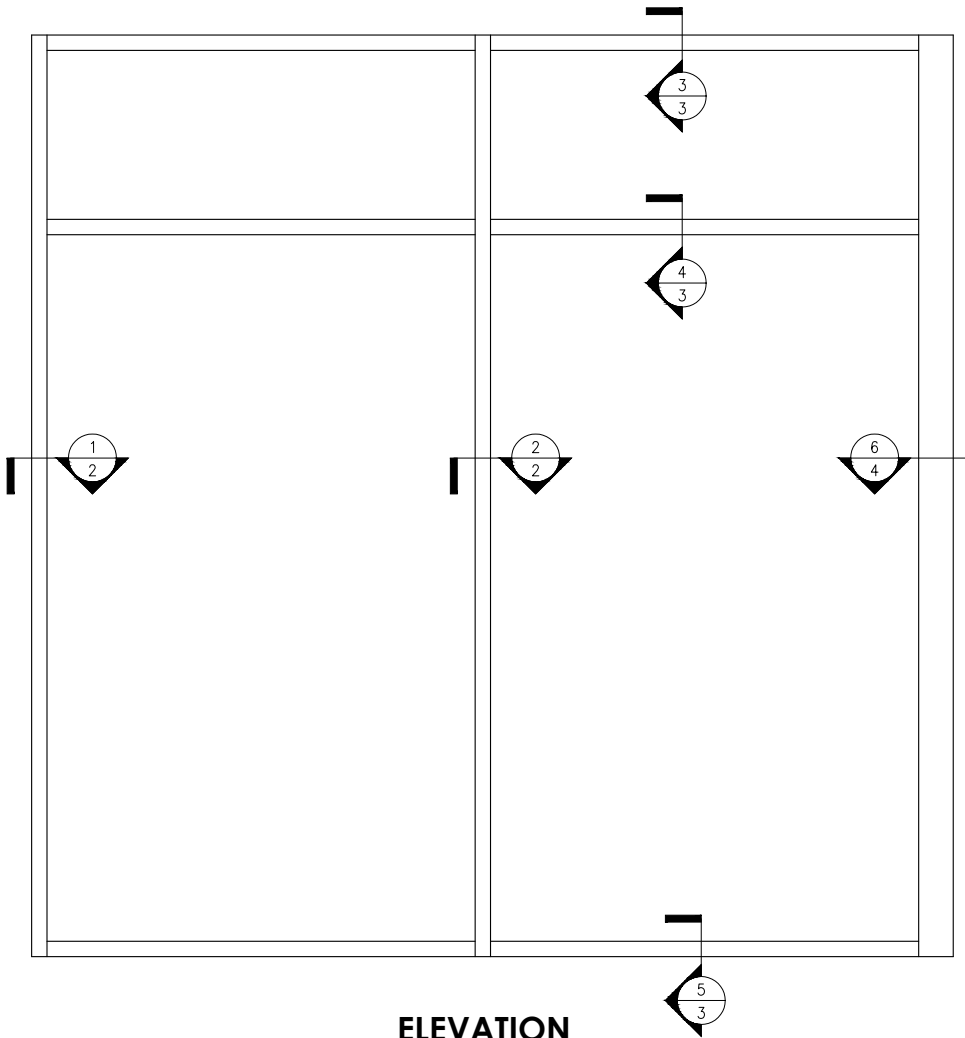
Scale: N.T.S.

Sheet: COVER

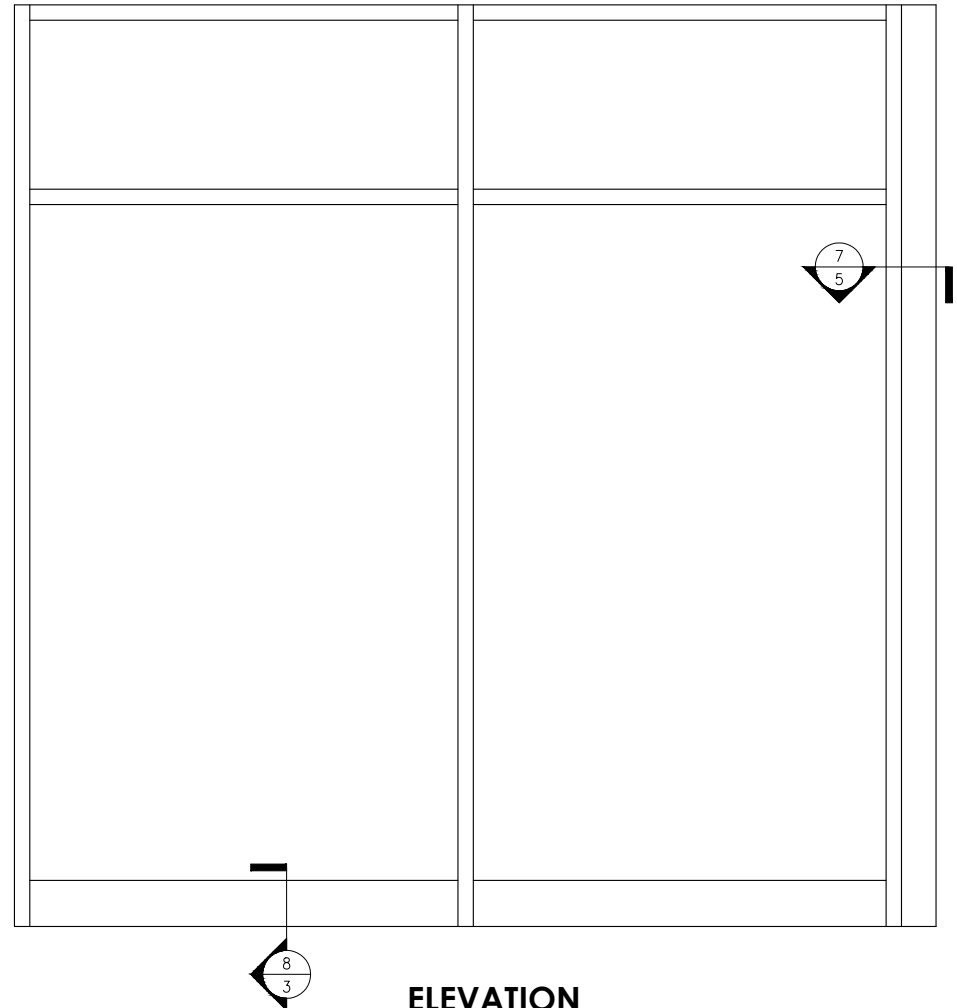


AMERICAN PRODUCTS, INC.

AMERICAN PRODUCTS, INC. (API)
13909 LYNMAR BOULEVARD
TAMPA, FL. 33626
PH: (813) 925-0144
WWW.AMERICANPRODUCTS.COM
CONTACT: KERRI BEALS



ELEVATION
W/ 4-1/2" CORNER ASSEMBLY



ELEVATION
W/ STRUCTURAL COLUMN BY OTHERS

API RECOMMENDS THAT THIS NOTE APPEAR WITH STOREFRONT ELEVATIONS AND SECTION VIEW DETAILS IN YOUR DRAWINGS

STOREFRONT AND RELATED MATERIALS PROVIDED BY AMERICAN PRODUCTS, INC. (API). NO SUBSTITUTIONS WITHOUT WRITTEN CONSENT FROM STORE OWNER/ARCHITECT. API (813)925-0144

Customer: API IN-HOUSE

Assembly: Thermal Glaze for 1: Glass (Ext)

REV#:

DATE:

Drawn By: API CAD

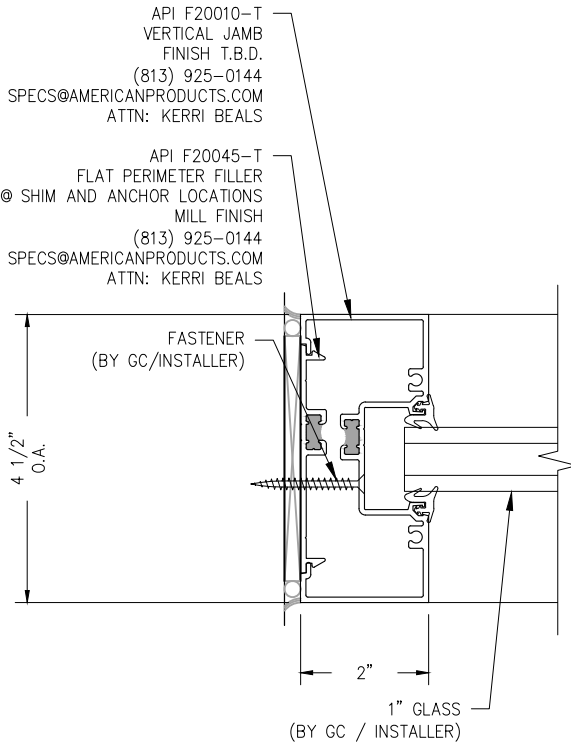
Date: 08/06/2025

Scale: N.T.S.

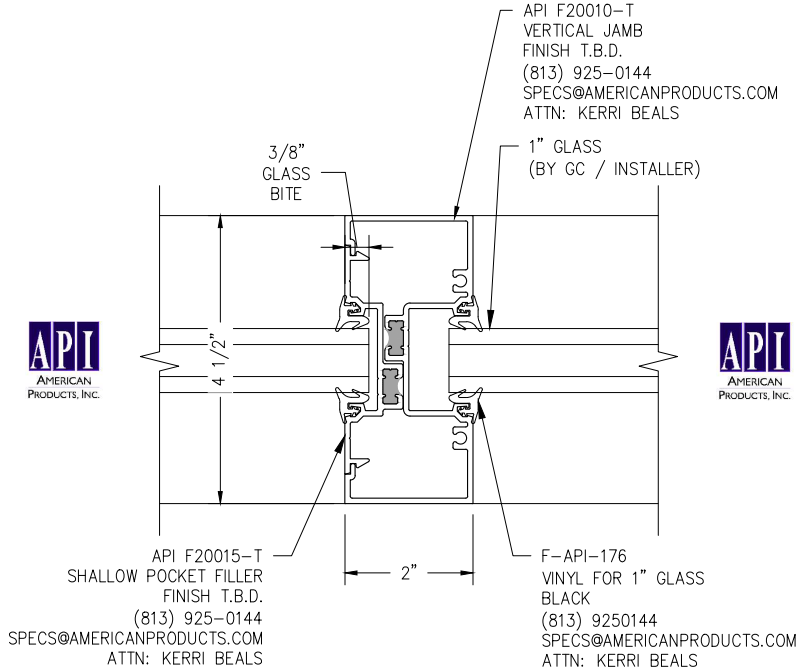
Sheet: 1



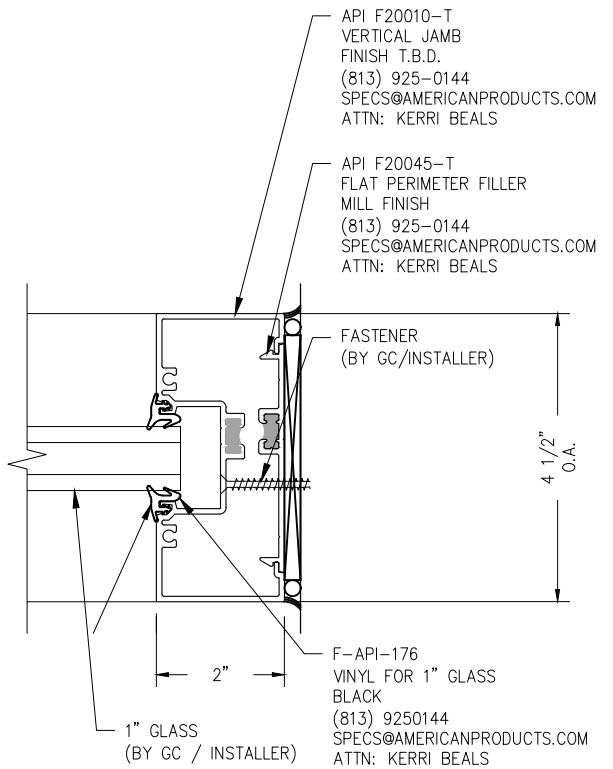
AMERICAN PRODUCTS, INC. (API)
13909 LYNMAR BOULEVARD
TAMPA, FL. 33626
PH: (813) 925-0144
WWW.AMERICANPRODUCTS.COM
CONTACT: KERRI BEALS



DETAIL #1



DETAIL #2



DETAIL #1

PLAN SECTION WITH INTERMEDIATE VERTICAL

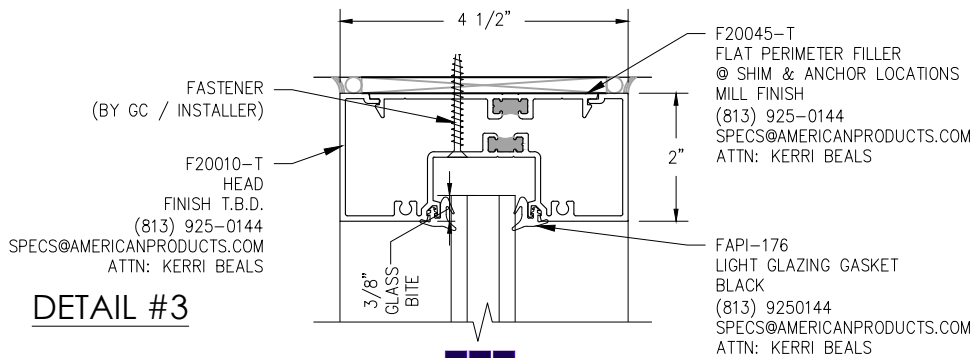
API RECOMMENDS THAT THIS NOTE APPEAR WITH STOREFRONT ELEVATIONS AND SECTION VIEW DETAILS IN YOUR DRAWINGS

STOREFRONT AND RELATED MATERIALS PROVIDED BY AMERICAN PRODUCTS, INC. (API). NO SUBSTITUTIONS WITHOUT WRITTEN CONSENT FROM STORE OWNER/ARCHITECT. API (813)925-0144

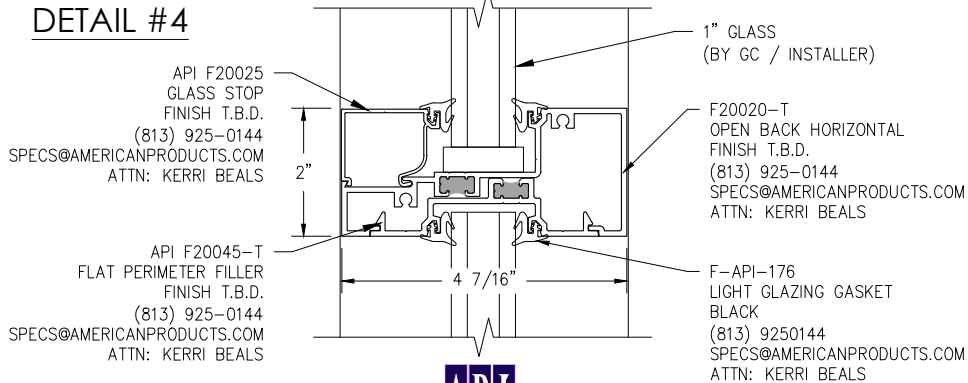
Customer: API IN-HOUSE		
Assembly: Thermal Glaze for 1" Glass (Ext.)	REV#:	DATE:
Drawn By: API CAD		
Date: 08/06/2025		
Scale: N.T.S.	Sheet: 2	



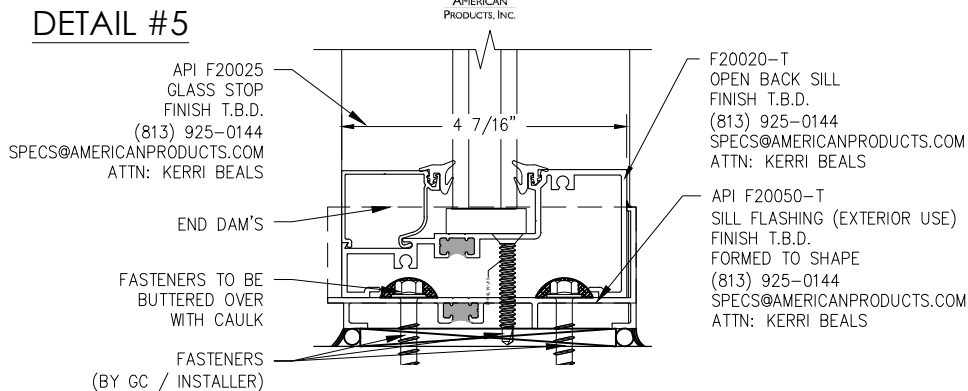
AMERICAN PRODUCTS, INC. (API)
13909 LYNMAR BOULEVARD
TAMPA, FL. 33626
PH: (813) 925-0144
WWW.AMERICANPRODUCTS.COM
CONTACT: KERRI BEALS



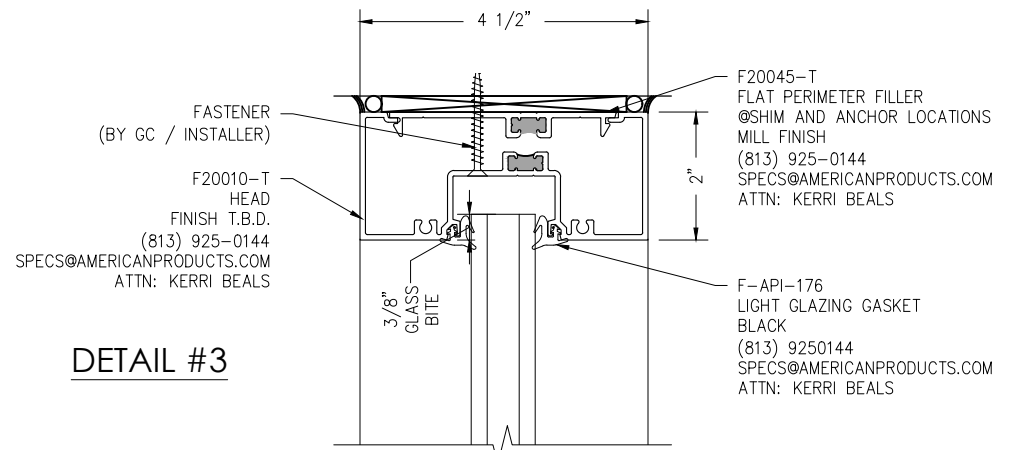
DETAIL #3



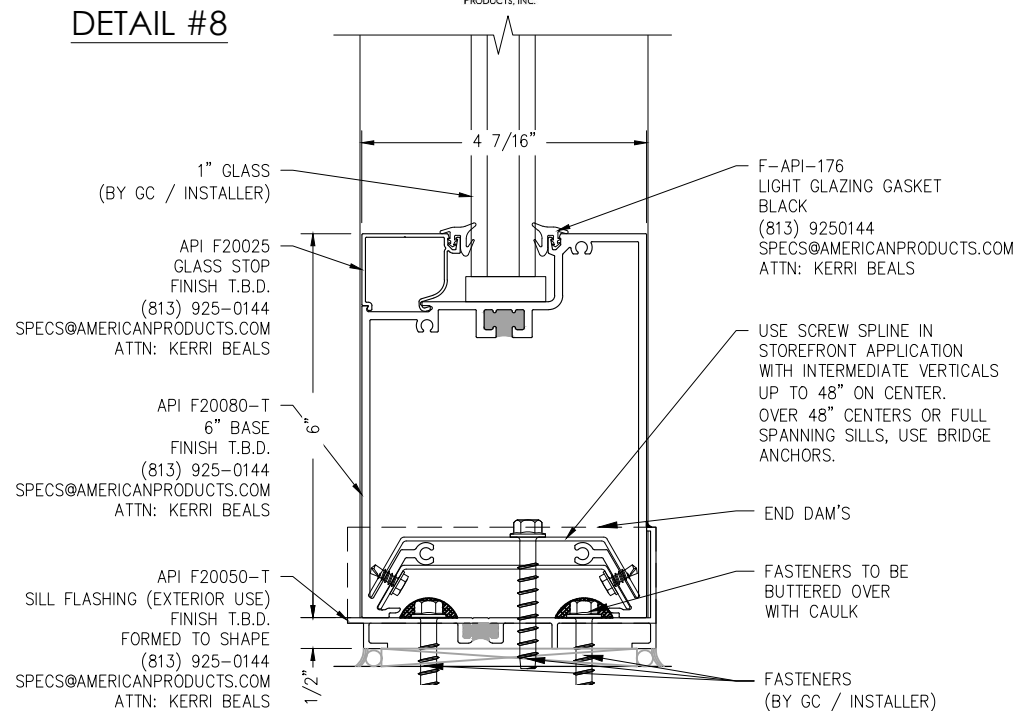
DETAIL #4



DETAIL #5



DETAIL #3



DETAIL #8

VERTICAL SECTION WITH INTERMEDIATE HORIZONTAL

VERTICAL SECTION WITH 6" BASE

API RECOMMENDS THAT THIS NOTE APPEAR WITH STOREFRONT ELEVATIONS AND SECTION VIEW DETAILS IN YOUR DRAWINGS

STOREFRONT AND RELATED MATERIALS PROVIDED BY AMERICAN PRODUCTS, INC. (API). NO SUBSTITUTIONS WITHOUT WRITTEN CONSENT FROM STORE OWNER/ARCHITECT. API (813)925-0144

Customer: API IN-HOUSE

Assembly: FLUSH GLAZE FOR 1" GLASS (EXT)

REV#:

DATE:

Drawn By: API CAD

Date: 08/06/2025

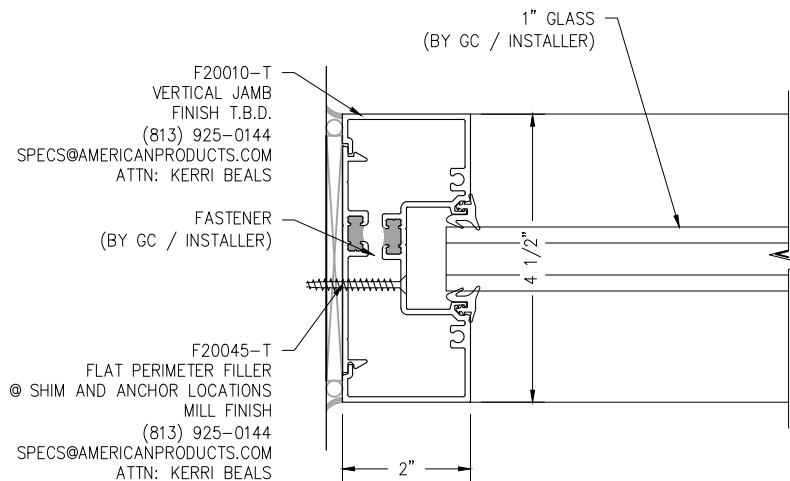
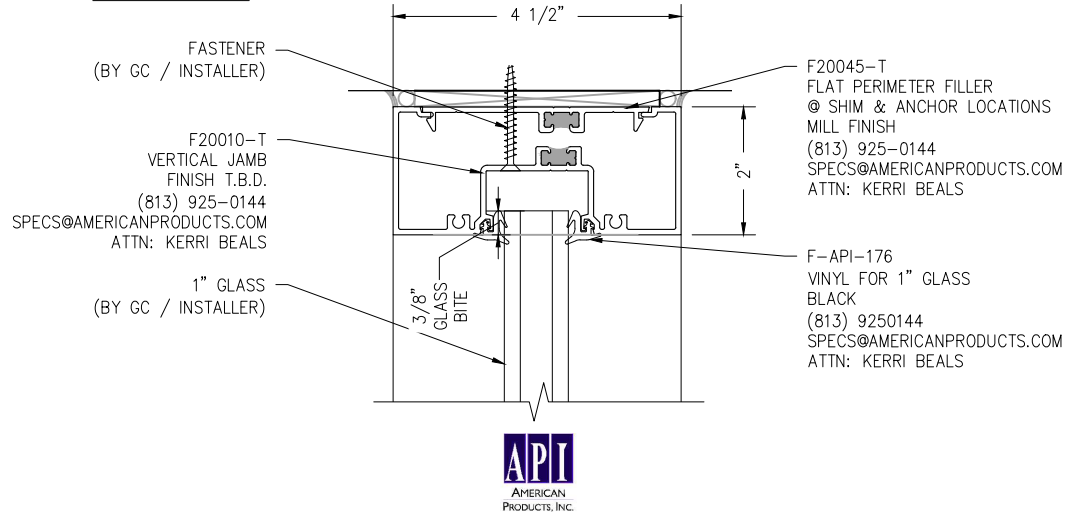
Scale: N.T.S.

Sheet: 3

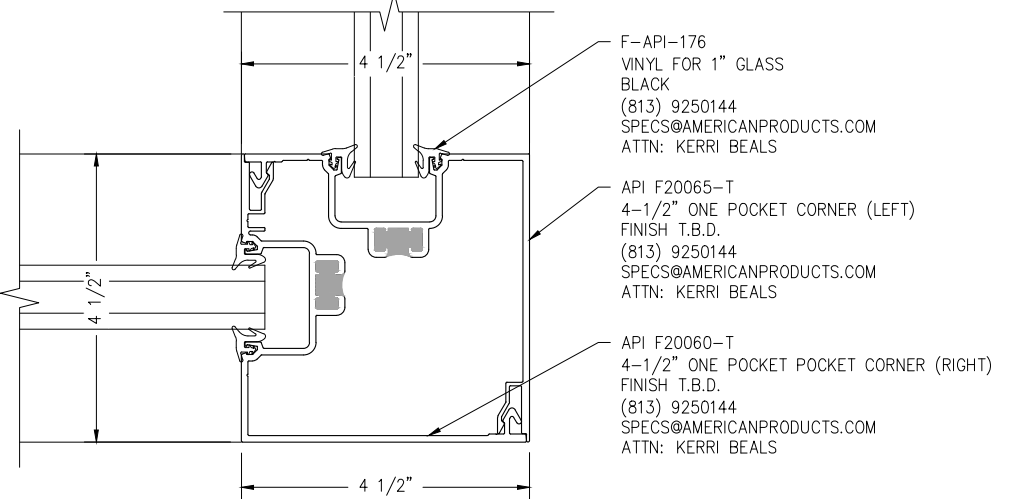


AMERICAN PRODUCTS, INC. (API)
13909 LYNMAR BOULEVARD
TAMPA, FL. 33626
PH: (813) 925-0144
WWW.AMERICANPRODUCTS.COM
CONTACT: KERRI BEALS

DETAIL #1



DETAIL #1



DETAIL #6

PLAN SECTION WITH 4-1/2" CORNER ASSEMBLY

API RECOMMENDS THAT THIS NOTE APPEAR WITH STOREFRONT ELEVATIONS AND SECTION VIEW DETAILS IN YOUR DRAWINGS

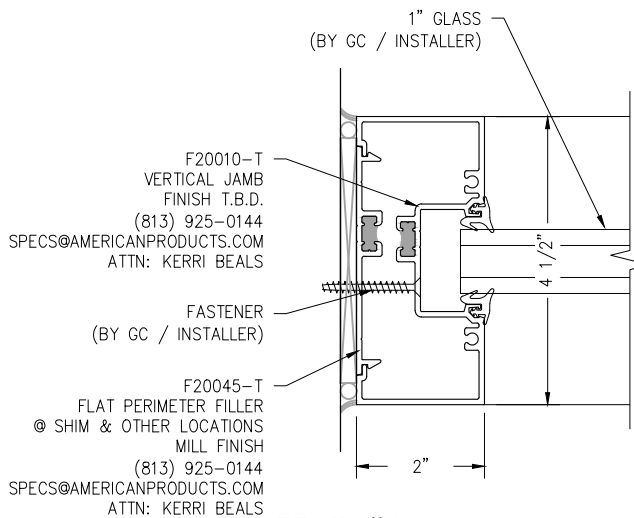
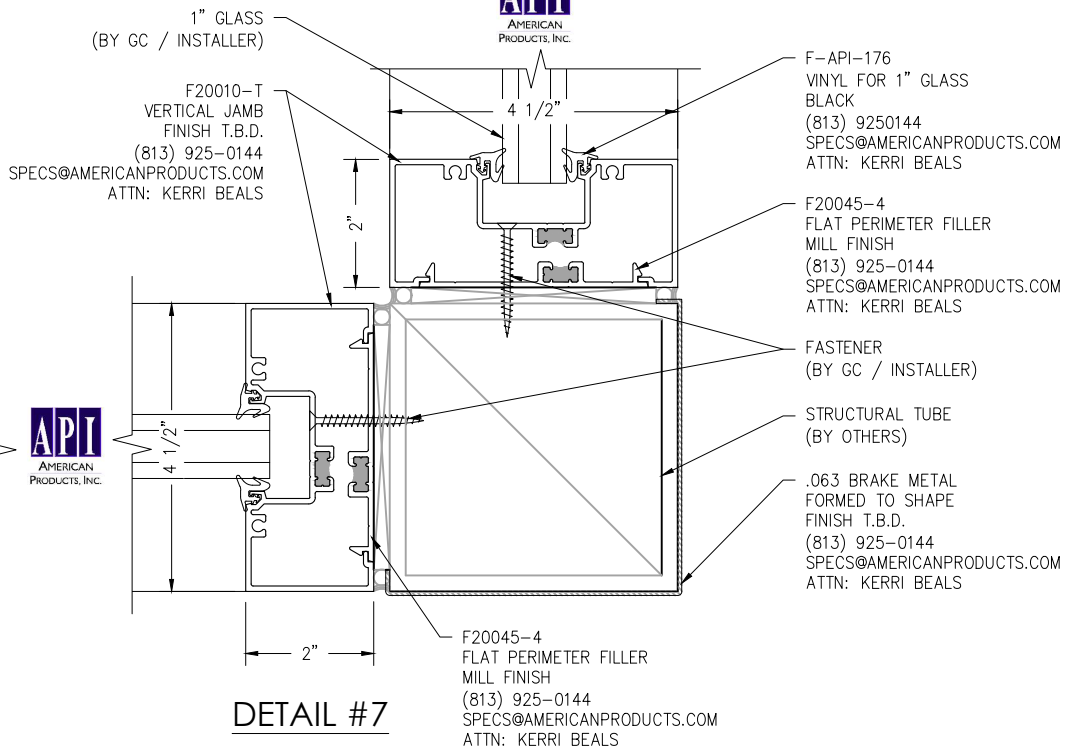
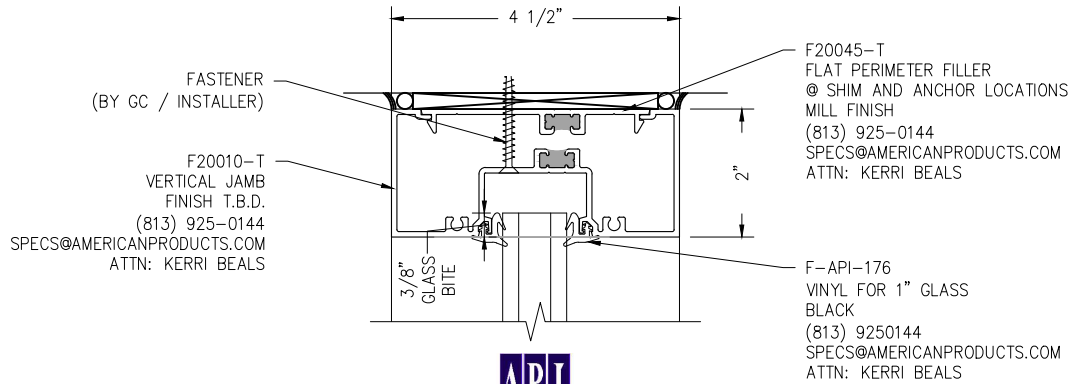
STOREFRONT AND RELATED MATERIALS PROVIDED BY AMERICAN PRODUCTS, INC. (API). NO SUBSTITUTIONS WITHOUT WRITTEN CONSENT FROM STORE OWNER/ARCHITECT. API (813)925-0144

Customer: API IN-HOUSE		
Assembly: Thermal Glaze for 1" Glass (Ext.)	REV#:	DATE:
Drawn By: API CAD		
Date: 08/06/2025		
Scale: N.T.S.	Sheet: 4	



AMERICAN PRODUCTS, INC. (API)
13909 LYNMAR BOULEVARD
TAMPA, FL. 33626
PH: (813) 925-0144
WWW.AMERICANPRODUCTS.COM
CONTACT: KERRI BEALS

DETAIL #1



DETAIL #1

DETAIL #7

PLAN SECTION WITH STRUCTURAL COLUMN (BY OTHERS)

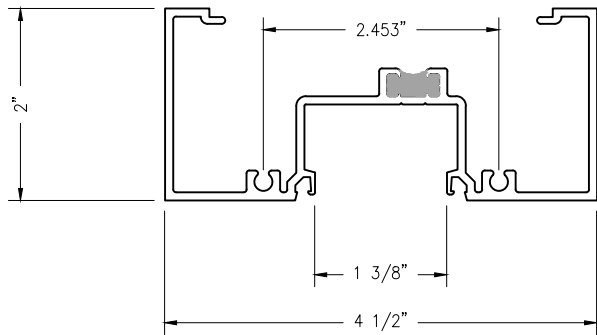
API RECOMMENDS THAT THIS NOTE APPEAR WITH STOREFRONT ELEVATIONS AND SECTION VIEW DETAILS IN YOUR DRAWINGS

STOREFRONT AND RELATED MATERIALS PROVIDED BY AMERICAN PRODUCTS, INC. (API). NO SUBSTITUTIONS WITHOUT WRITTEN CONSENT FROM STORE OWNER/ARCHITECT. API (813)925-0144

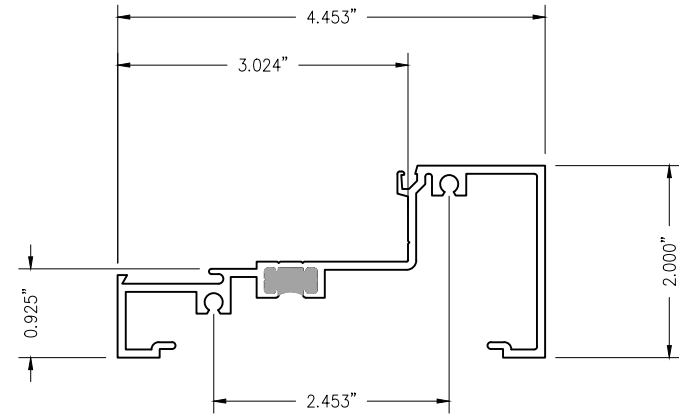
Customer: API IN-HOUSE		
Assembly: Thermal Glaze for 1" Glass (Ext.)	REV#:	DATE:
Drawn By: API CAD		
Date: 08/06/2025		
Scale: N.T.S.	Sheet: 5	



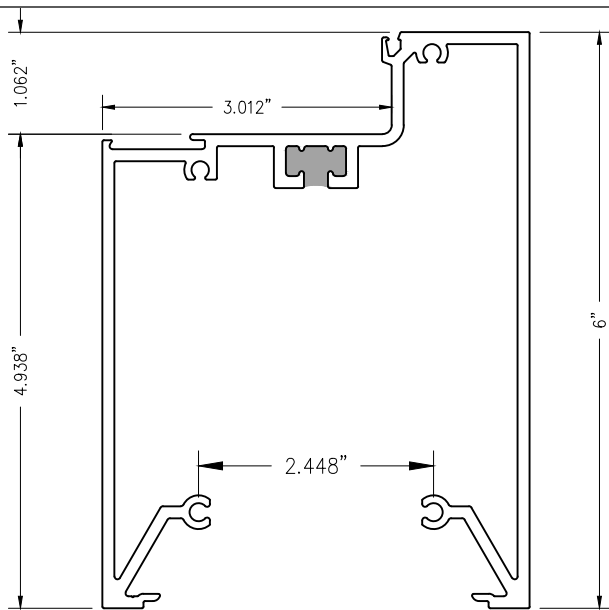
AMERICAN PRODUCTS, INC. (API)
 13909 LYNMAR BOULEVARD
 TAMPA, FL. 33626
 PH: (813) 925-0144
 WWW.AMERICANPRODUCTS.COM
 CONTACT: KERRI BEALS



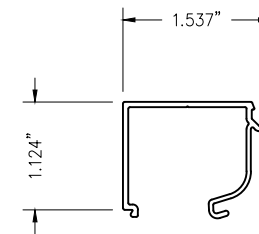
F20010-T - HEAD / JAMB



F20020-T - HORIZONTAL / SILL



F20080-T - 6\"/>



F20025 - GLASS STOP

API RECOMMENDS THAT THIS NOTE APPEAR WITH STOREFRONT ELEVATIONS AND SECTION VIEW DETAILS IN YOUR DRAWINGS

STOREFRONT AND RELATED MATERIALS PROVIDED BY AMERICAN PRODUCTS, INC. (API). NO SUBSTITUTIONS WITHOUT WRITTEN CONSENT FROM STORE OWNER/ARCHITECT. API (813)925-0144

Customer: API IN-HOUSE

Assembly: Thermal Glaze for 1" Glass (Ext.)

REV#:

DATE:

Drawn By: API CAD

Date: 08/06/2025

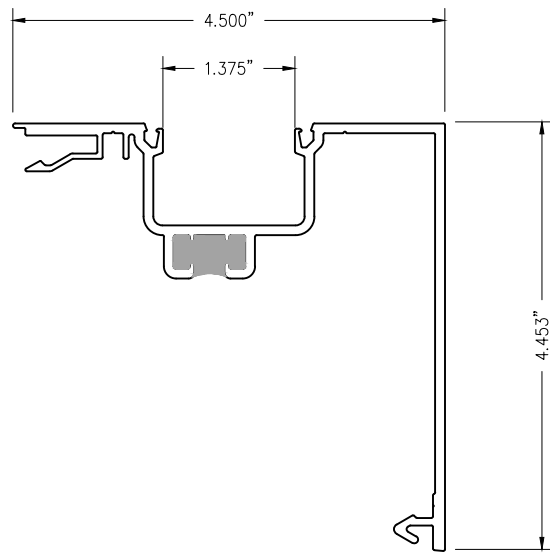
Scale: N.T.S.

Sheet: 6

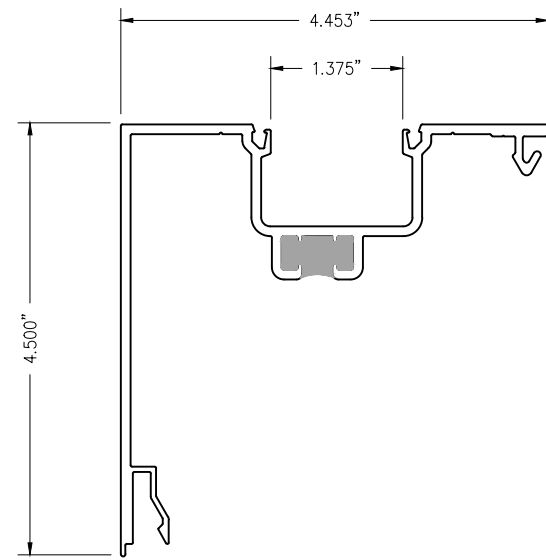


AMERICAN PRODUCTS, INC.

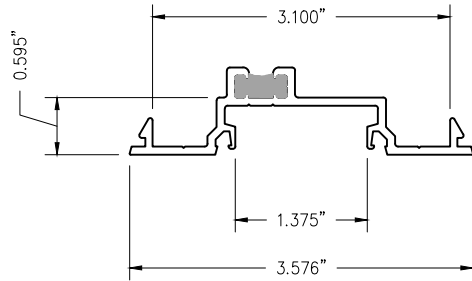
AMERICAN PRODUCTS, INC. (API)
 13909 LYNMAR BOULEVARD
 TAMPA, FL. 33626
 PH: (813) 925-0144
 WWW.AMERICANPRODUCTS.COM
 CONTACT: KERRI BEALS



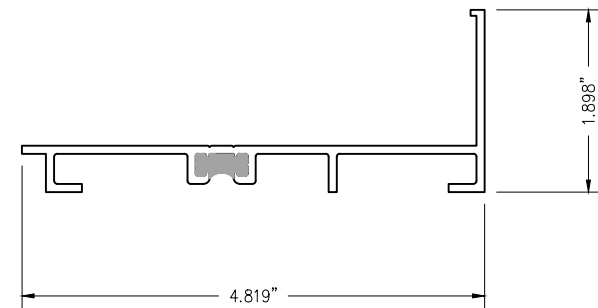
F20060 - 4-1/2" ONE POCKET CORNER HALF (LEFT)



F20065 - 4-1/2" ONE POCKET CORNER HALF (RIGHT)



F20015-T - SHALLOW POCKET FILLER



F20050-T - SILL FLASHING

API RECOMMENDS THAT THIS NOTE APPEAR WITH STOREFRONT ELEVATIONS AND SECTION VIEW DETAILS IN YOUR DRAWINGS

STOREFRONT AND RELATED MATERIALS PROVIDED BY AMERICAN PRODUCTS, INC. (API). NO SUBSTITUTIONS WITHOUT WRITTEN CONSENT FROM STORE OWNER/ARCHITECT. API (813)925-0144

Customer: API IN-HOUSE

Assembly: Thermal Glaze for 1" Glass (Ext.)

REV#:

DATE:

Drawn By: API CAD

Date: 08/06/2025

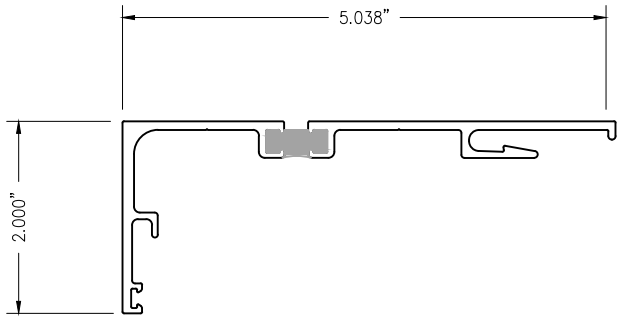
Scale: N.T.S.

Sheet: 7

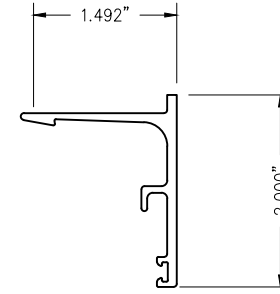


AMERICAN PRODUCTS, INC.

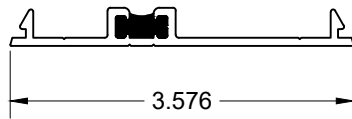
AMERICAN PRODUCTS, INC. (API)
13909 LYNMAR BOULEVARD
TAMPA, FL. 33626
PH: (813) 925-0144
WWW.AMERICANPRODUCTS.COM
CONTACT: KERRI BEALS



F20085-T - HEAD RECEPTOR



F20090 - RECEPTOR BEAD



F20045-T - FLAT PERIMETER FILLER

API RECOMMENDS THAT THIS NOTE APPEAR WITH STOREFRONT ELEVATIONS AND SECTION VIEW DETAILS IN YOUR DRAWINGS

STOREFRONT AND RELATED MATERIALS PROVIDED BY AMERICAN PRODUCTS, INC. (API). NO SUBSTITUTIONS WITHOUT WRITTEN CONSENT FROM STORE OWNER/ARCHITECT. API (813)925-0144

Customer: API IN-HOUSE

Assembly: Thermal Glaze for 1" Glass (Ext.)

REV#:

DATE:

Drawn By: API CAD

Date: 08/06/2025

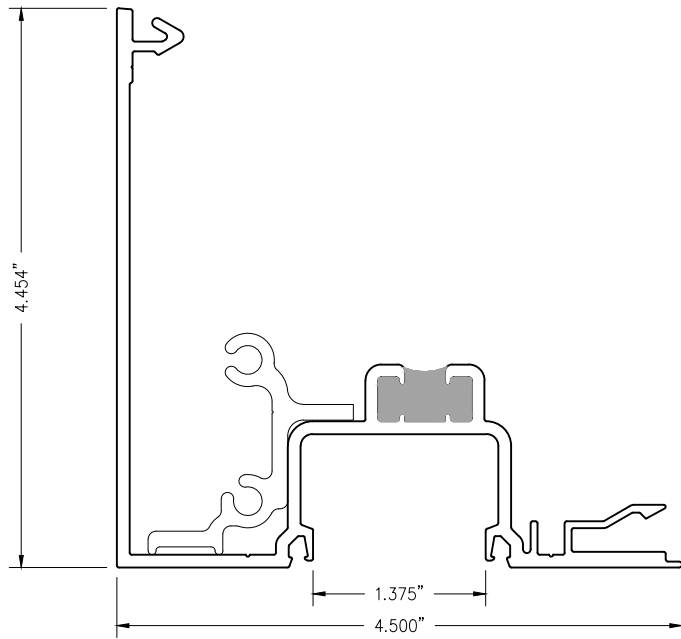
Scale: N.T.S.

Sheet: 8

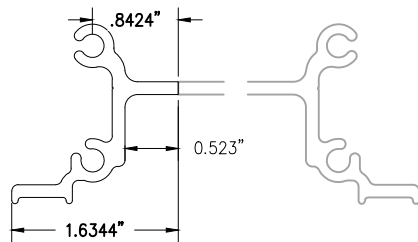


AMERICAN PRODUCTS, INC.

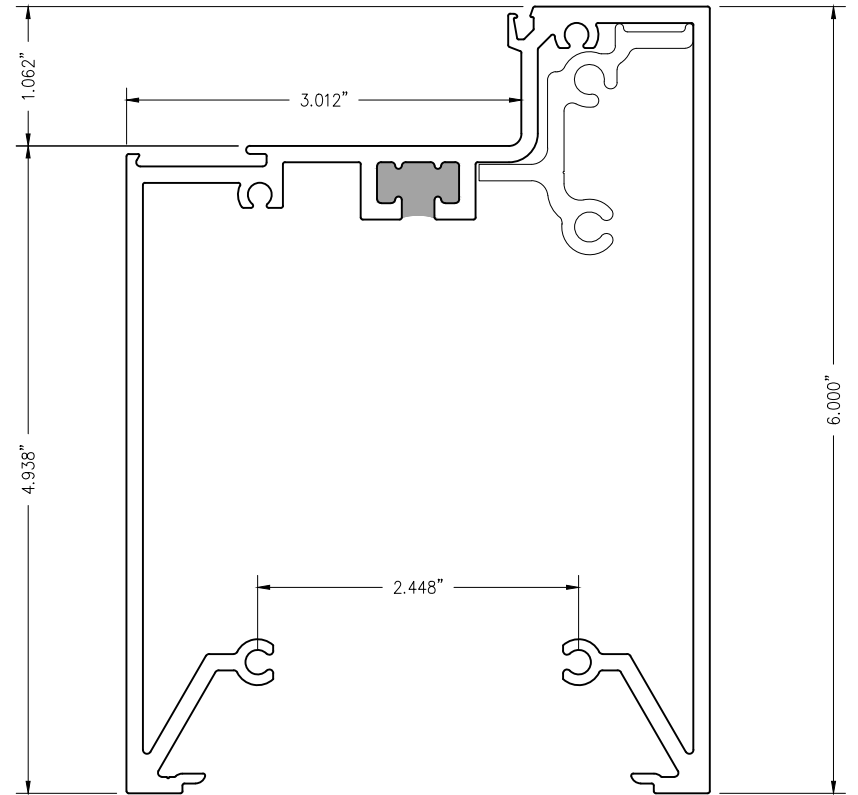
AMERICAN PRODUCTS, INC. (API)
 13909 LYNMAR BOULEVARD
 TAMPA, FL. 33626
 PH: (813) 925-0144
 WWW.AMERICANPRODUCTS.COM
 CONTACT: KERRI BEALS



F20060 - 4-1/2" ONE POCKET CORNER HALF (LEFT)



SHEAR BLOCK FOR 6" SILL & LEFT HALF CORNER



F20080-T - 6" SILL (W/ SHEAR BLOCK)

API RECOMMENDS THAT THIS NOTE APPEAR WITH STOREFRONT ELEVATIONS AND SECTION VIEW DETAILS IN YOUR DRAWINGS

STOREFRONT AND RELATED MATERIALS PROVIDED BY AMERICAN PRODUCTS, INC. (API). NO SUBSTITUTIONS WITHOUT WRITTEN CONSENT FROM STORE OWNER/ARCHITECT. API (813)925-0144

Customer: API IN-HOUSE

Assembly: Thermal Glaze for 1" Glass (Ext.)

REV#:

DATE:

Drawn By: API CAD

Date: 08/06/2025

Scale: N.T.S.

Sheet: A



AMERICAN PRODUCTS, INC.

AMERICAN PRODUCTS, INC. (API)
 13909 LYNMAR BOULEVARD
 TAMPA, FL. 33626
 PH: (813) 925-0144
 WWW.AMERICANPRODUCTS.COM
 CONTACT: KERRI BEALS